



Sony Reader Touch Edition PRS-600 Power Button Replacement

This guide will show the reader how to replace the power button

Written By: Zachary Jeffers



INTRODUCTION

If the power button on the device is faulty or not working then this guide will show the reader how to replace it.



TOOLS:

- [Phillips #000 Screwdriver](#) (1)
 - [Spudger](#) (1)
-

Step 1 — Back Panel



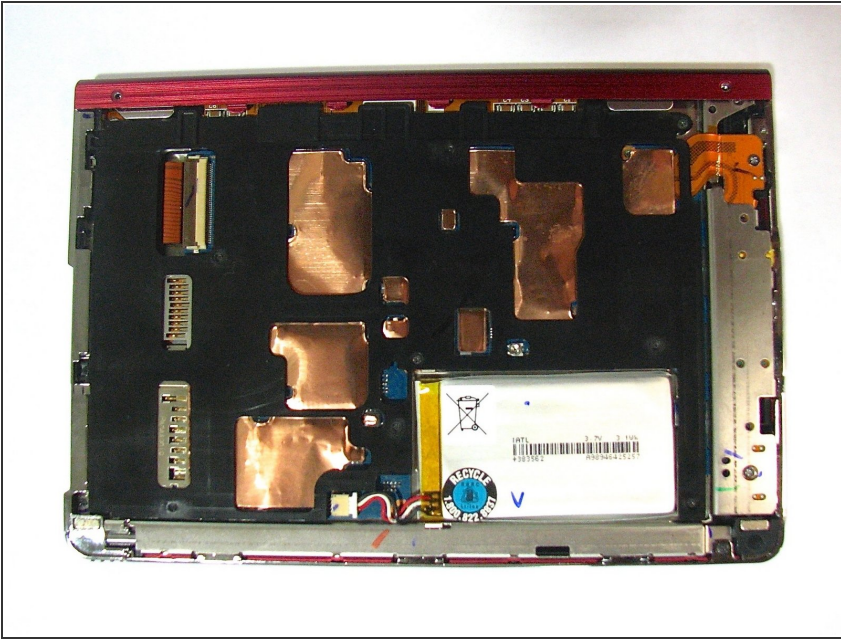
- Using the Phillips head screwdriver PH000, remove the two 1.4 mm screws that are located on the backside of the device.

Step 2



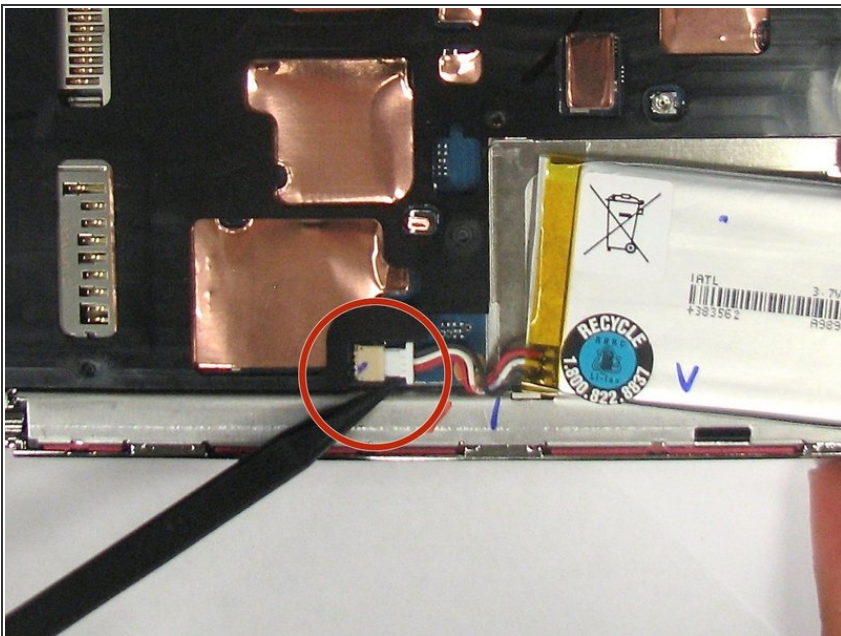
- Slide the back cover off by pushing it to the left, away from the side that held the screws.
- Remove the cover.

Step 3



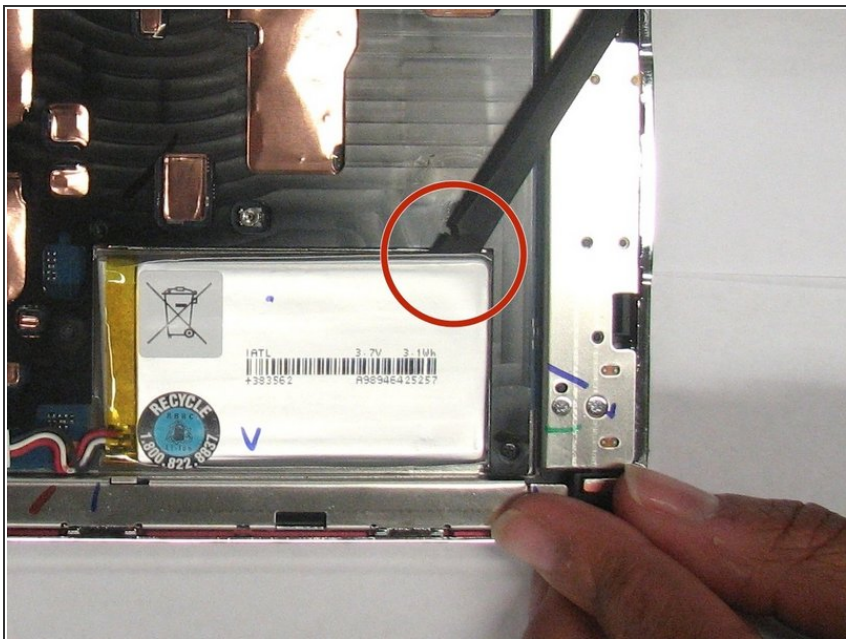
- This is what the device should look like once the back cover panel has been removed.

Step 4 — Battery



- Once the back cover has been removed locate the battery in the bottom right corner of the device.
- Using the pointed end of the spudger, push out the white plug that is connected to the battery from its beige base.

Step 5



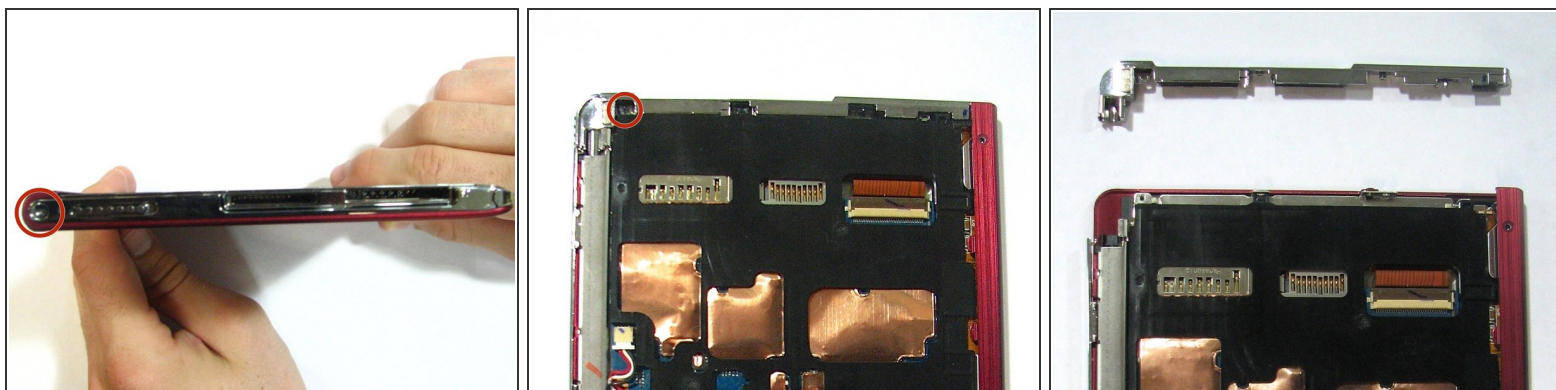
- Use the flat end of the spudger to pry the battery out of its holder. There may be glue holding it in place.

Step 6 — Power Button



- Remove the stylus from the device.

Step 7



- Using the Phillips screwdriver remove the 1.4 mm screw from the top panel.
- Using the same screwdriver, remove the 1.4 mm screw from the back of the device.
- Pry apart off the top panel of the device.

To reassemble your device, follow these instructions in reverse order.