



# Sony Reader Wi-Fi PRS-T3 E-Ink screen Replacement

Use this guide to replace the e-Ink screen of your Sony Reader Wi-Fi PRS-T3. ED060XC5(LF)C1 screen have been used as a new part.

Written By: mrdkonst



---

## INTRODUCTION

This article is devoted to replacement of e-Ink screen on your Sony Reader Wi-Fi PRS-T3. The main difficulty is to remove old double-sided tape by which screen holds on main body.

ED060XC5(LF)C1 screen have been used as a new part.



### TOOLS:

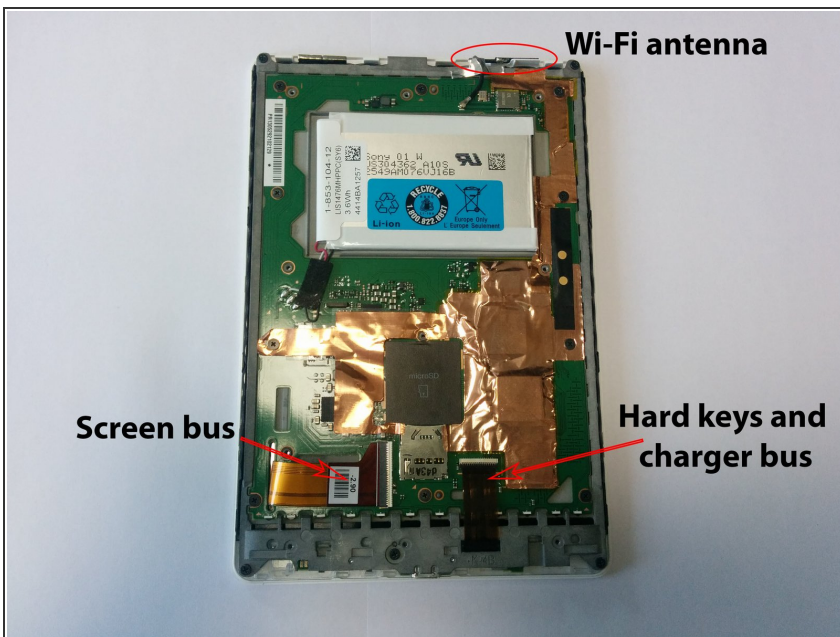
- [Essential Electronics Toolkit](#) (1)
-

## Step 1 — Disassembling



- Detach the back cover from the e-reader
- Remove the black sticker, uncovering three additional screws. The sticker comes loose quite easy.
- Unscrew all 10 screws (length 3.2mm).
- Now take a spudger, and start opening the case at the top. There are four retaining clips at each side.

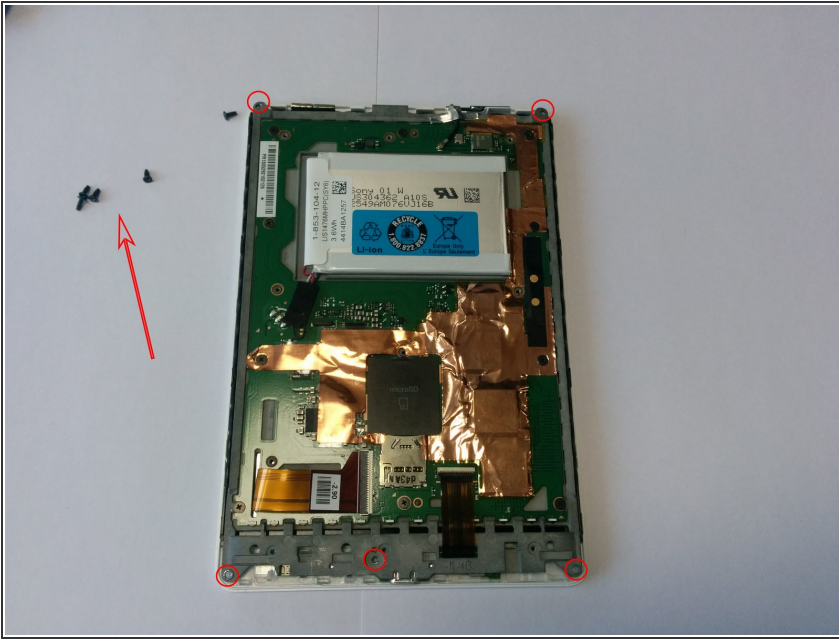
## Step 2



- Under the cover you'll find many interesting things.

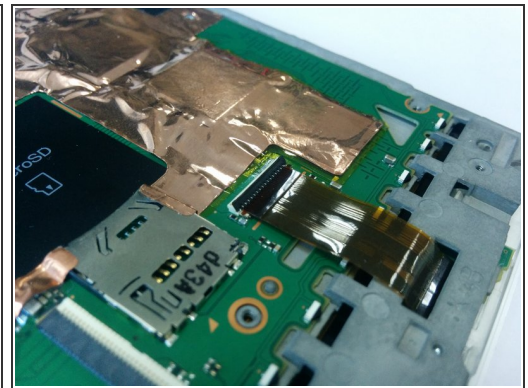
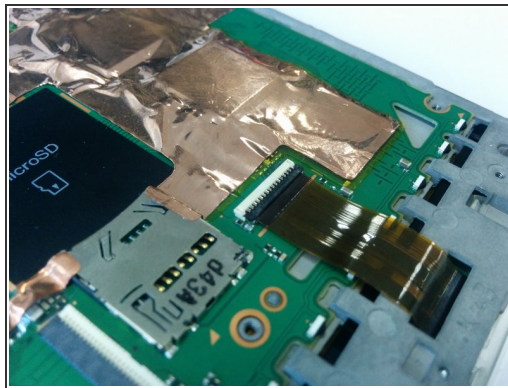
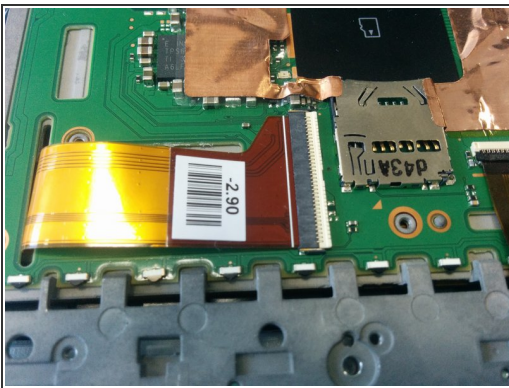


## Step 3



- Unscrew these 5 screws (length 4.3mm) . They hold the front bezel (white or black part of the main body).
- There are other screws that hold the motherboard (10×, 1.8mm) to the grey back plate. You do not need to remove them, unless you want to remove the electronics board (for example to prevent damage when cleaning the back plate in a later step).

## Step 4



- Carefully unplug buses. For the screen bus. Simple pull it from connector. For the hard keys bus . First, open the connector by hook it from below. Then it'll be easy to unplug the bus.

## Step 5



- Carefully unglue the Wifi antenna.

## Step 6



- Now we need to remove a white cover. It holds by clips around the body. Please, pay attention to hooks in red ellipses on the photo. On the second photo you may see detached white cover.

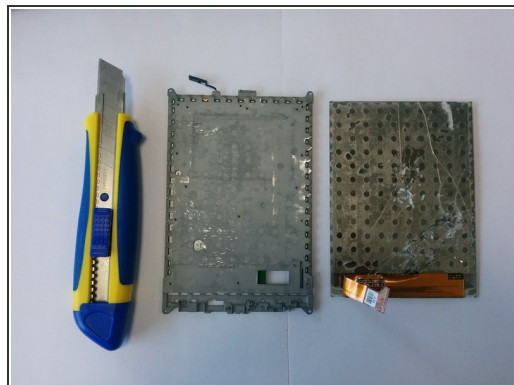
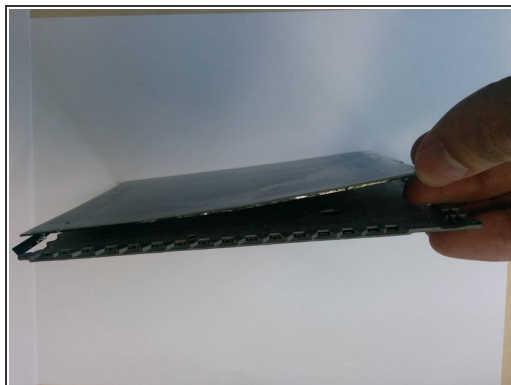
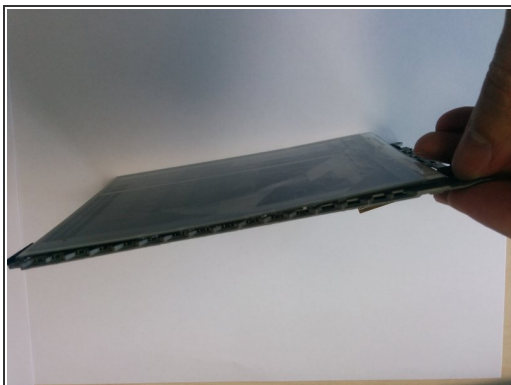


## Step 7



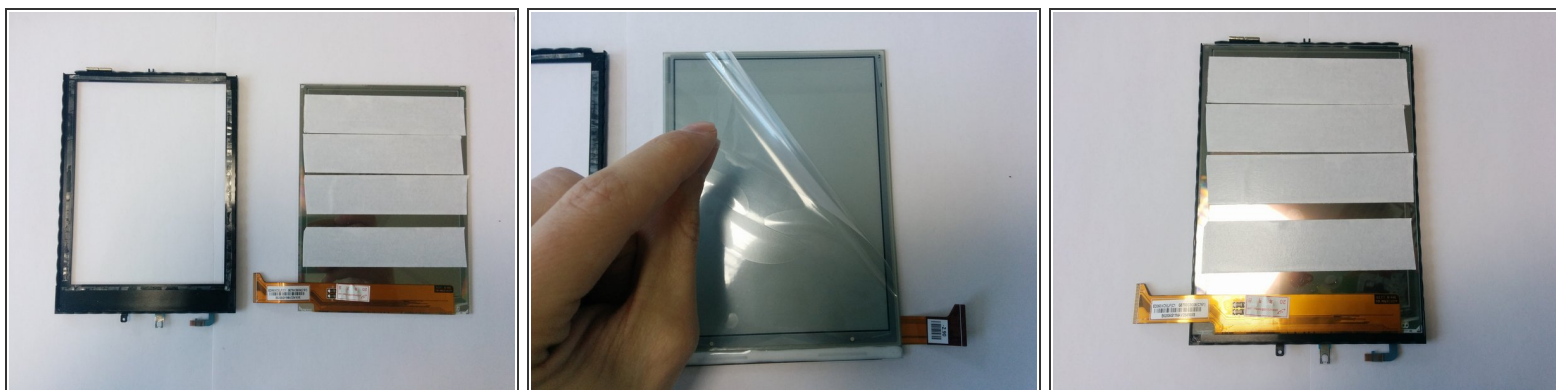
- Unscrew screws marked by red circles.
- Carefully unplug a bus
- Be careful, do not lose this tiny thing!
- Remove black frame. It's attached to the screen by double sided tape

## Step 8



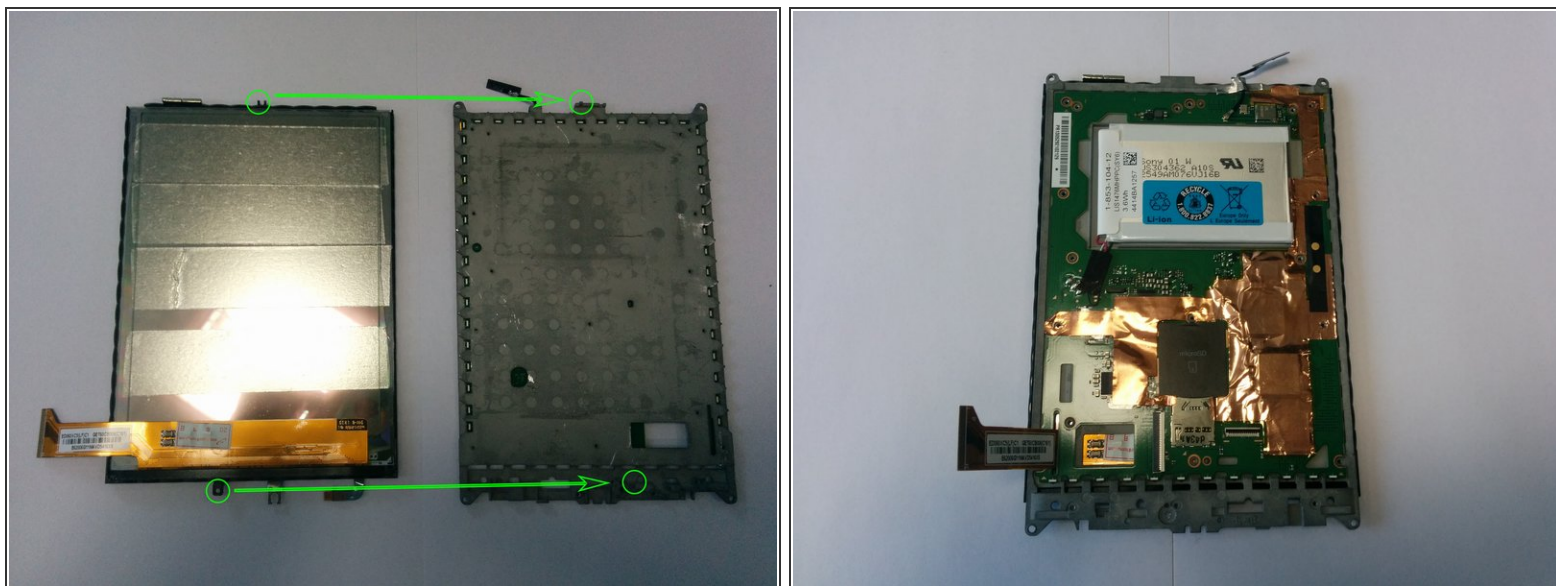
- Use any suitable knife to detach broken screen from metal plate. Please, be very careful. Do not hurt yourself!
- After you did this. You need to clean metal plate from the remnants of glue and double sided tape.

## Step 9 — Screen assembling



- Take a new screen. Apply double sided tape on back side.
- Remove protective film from the screen
- Put the screen into the black frame. Upper side of the screen should touch upper side of the frame.

## Step 10 — Gluing the screen to the surface



- Carefully join the screen in a black frame with the metal plate.
- Continue assembling in a reverse order

To reassemble your device, follow these instructions in reverse order.

This document was generated on 2020-03-19 09:59:05 PM (MST).

