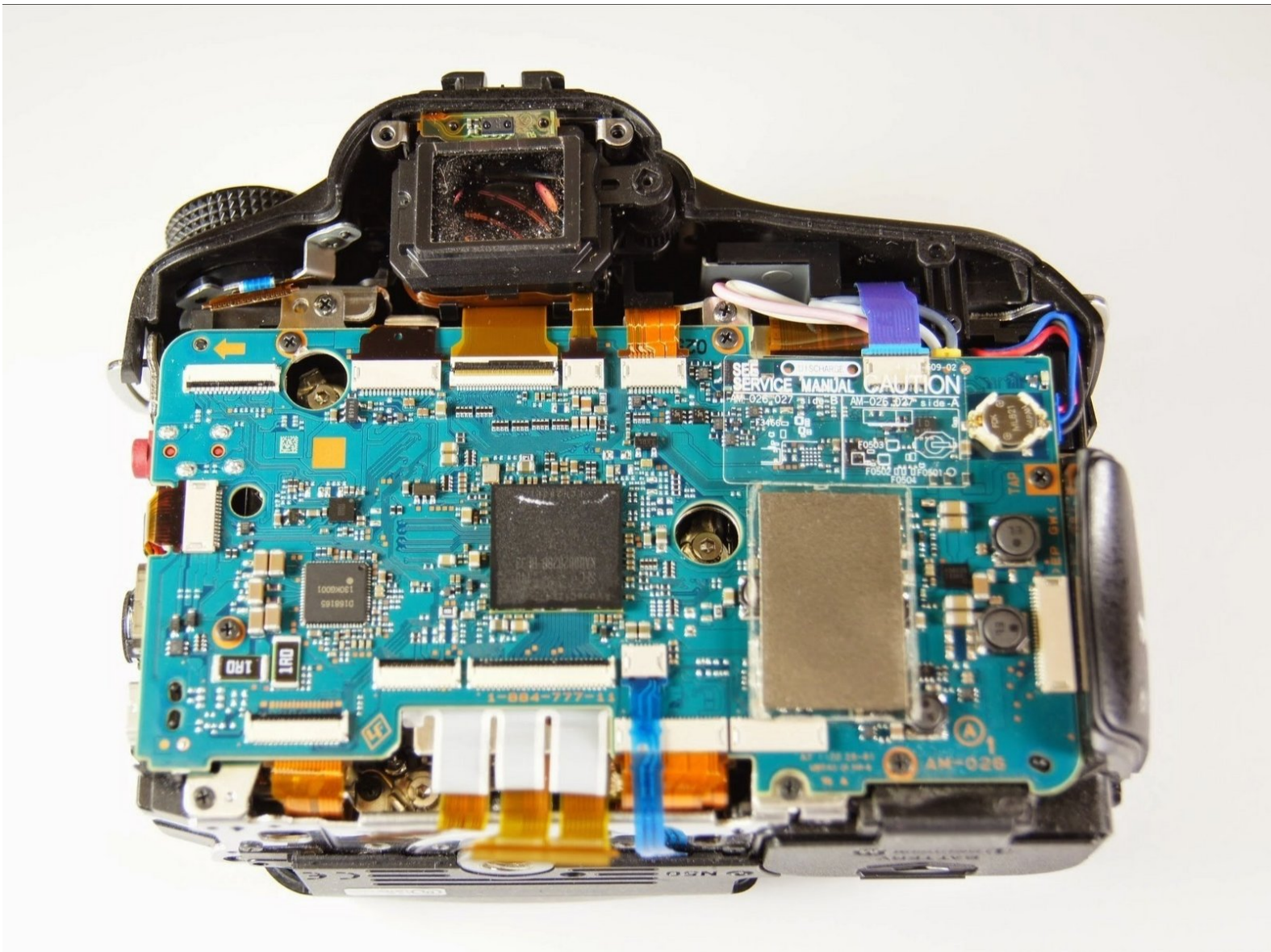




# Sony SLT Alpha-65V Back Panel Disassembly

How to disassemble the back panel of the Sony SLT Alpha-65V camera.

Written By: Dima Kyle



---

## INTRODUCTION

This guide will show you how to remove the back panel of the Sony Alpha 65 camera in order to access the circuit board and the other components inside the camera. This requires using a Phillips #00 screwdriver and tweezers. Be sure to keep track of all screws that come off the camera.

---

### TOOLS:

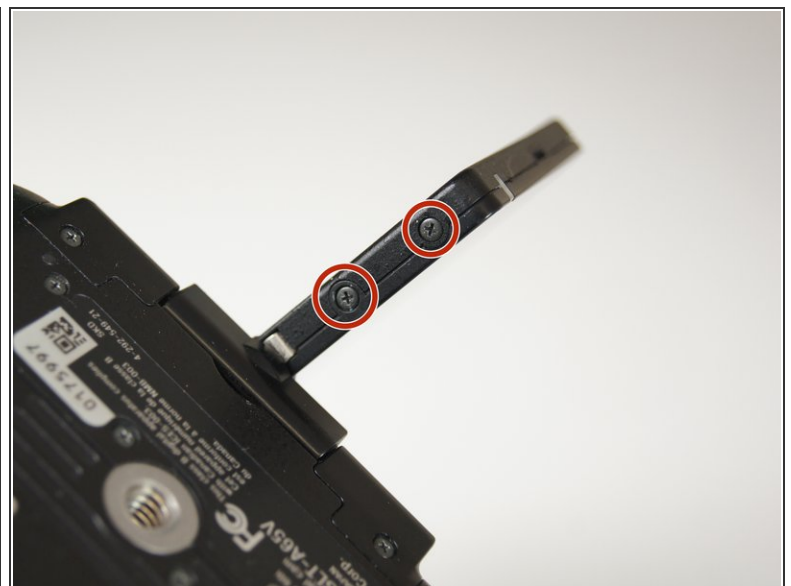
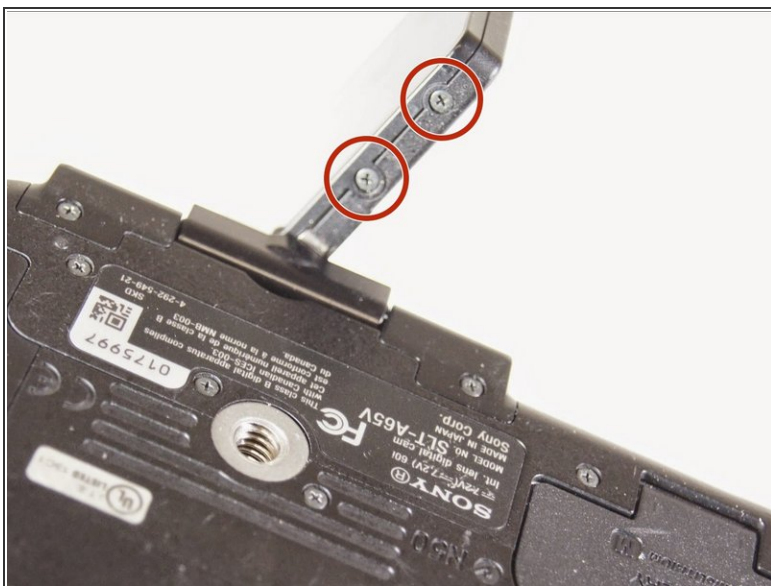
- [Phillips #00 Screwdriver](#) (1)
  - [Phillips #000 Screwdriver](#) (1)
  - [iFixit Opening Tools](#) (1)
  - [Tweezers](#) (1)
-

## Step 1 — LCD Screen



- Remove the two 4.0 mm Phillips #00 screws on the base of the camera.
- Remove the 3.0 mm Phillips #00 screw on the hinge of the screen.

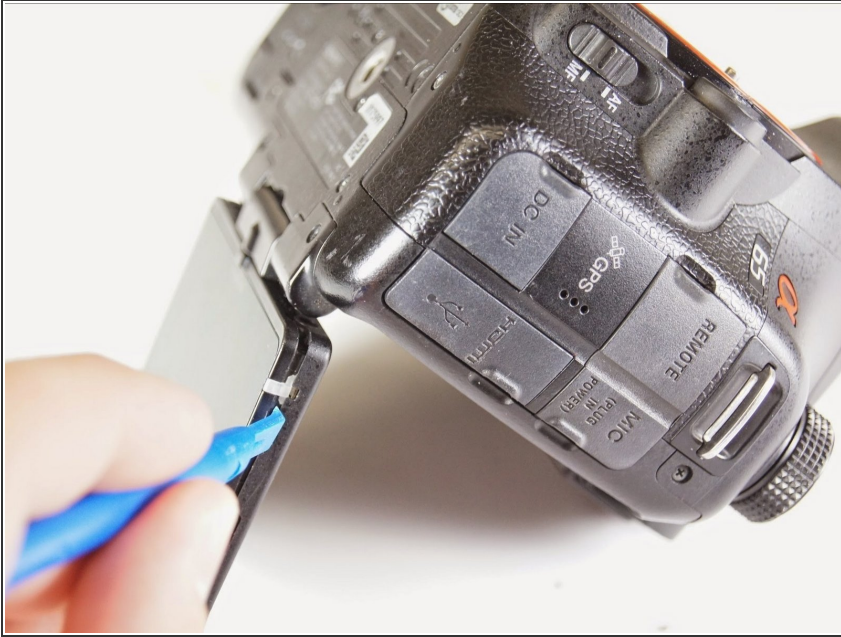
## Step 2



- Remove the two 2.0 mm Phillips #00 screws on the bottom-right side of the screen.
- Remove the two 2.0 mm Phillips #00 screws on the bottom-left side of the screen.

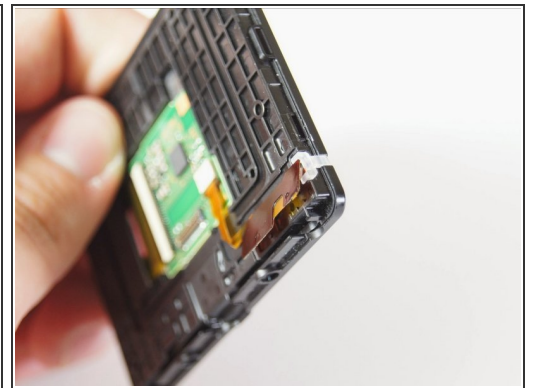
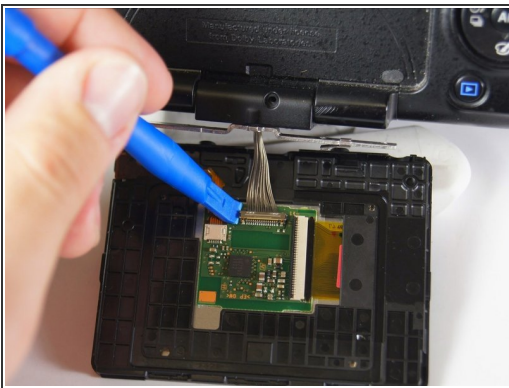



### Step 3



- Use the plastic opening tool to gently pry the screen open around the entire screen.

### Step 4



 The brown ribbon and white light on the edge of the screen are extremely loose and will fall off off. Keep the screen flat at all times to make sure they don't come out.

- Use a plastic opening tool to disconnect the silver wires from the screen's circuitry and completely remove the screen from the camera.

## Step 5 — Back Panel



- Unscrew the four 4.0 mm Phillips #00 screws with a on the base of the camera below the the scheme that separates the front and back panels.
- Unscrew the 5.0 mm Phillips #00 screw on the bottom right of the camera.

## Step 6



- Unscrew the 4.0 mm Phillips #00 screw on bottom of the left side of the camera.
- Unscrew the 5.0 mm Phillips #00 screw near the top of the left side of the camera.

## Step 7



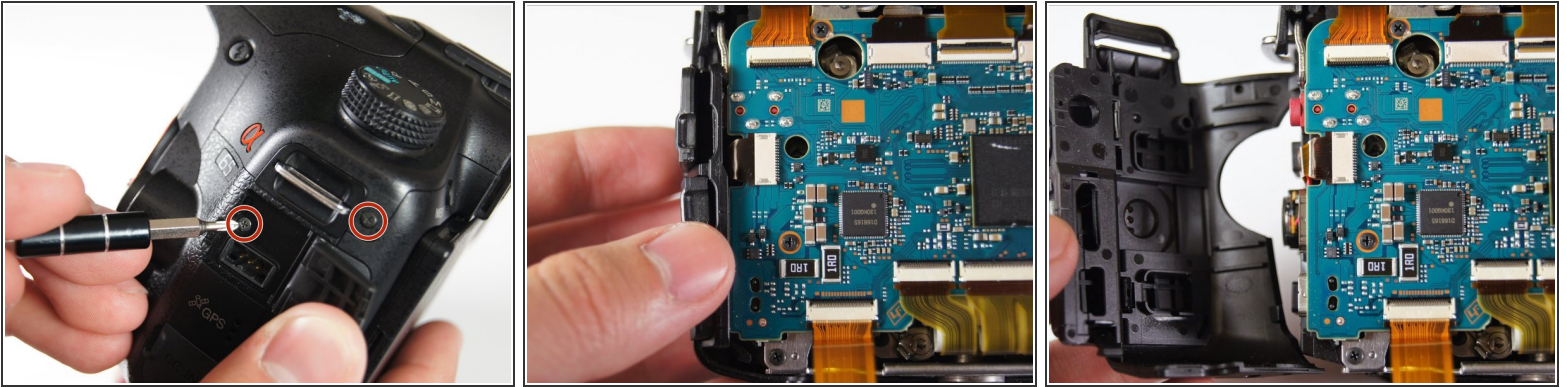
**!** Be careful when pulling the back panel away as it will still be connected to the body of the camera by two strips of film.

**i** When unscrewing the 5.0 mm screw on the dial, make sure to hold onto the dial that becomes detached after taking out the screw.

- Unscrew the two 4.0 mm Phillips #00 screw at the top of the camera by the eyepiece.
- Unscrew the 5.0 mm Phillips #00 screw of the dial below the other two screws.
- Once all the screws are removed, carefully use your hands to detach the back panel from the camera. Working around the edges can help as well.

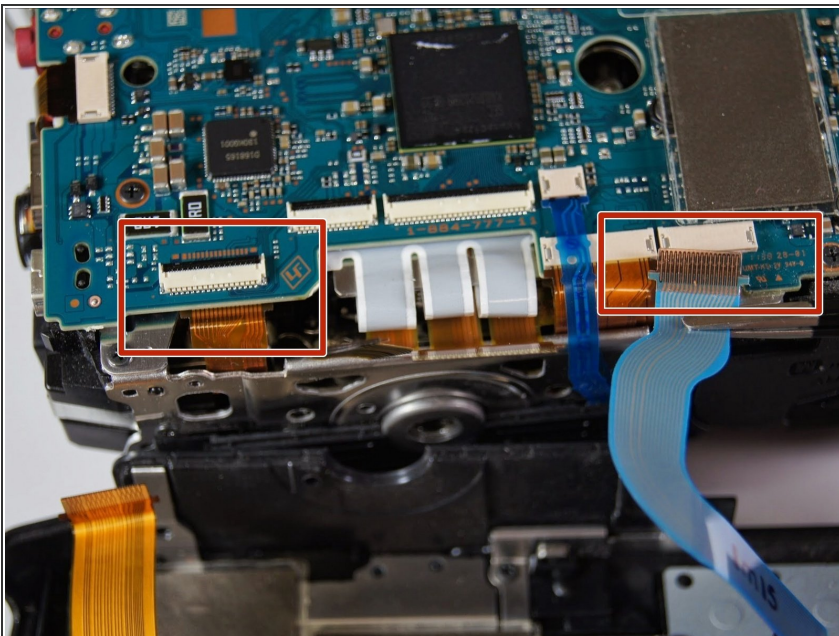


## Step 8



- Remove the two 4.0 mm Phillips #00 screws on the right of the camera that are located on the upper right side and under the "Remote" port flap.
- Detach the right side panel with the remote and HDMI ports of the camera by gently pulling on the panel.

## Step 9



- ⓘ When the back panel is removed, be careful when moving the camera. There are parts inside the camera which now may come loose.
- Use tweezers to remove the blue and orange ribbon connectors from their connection points pictured here.

To reassemble your device, follow these instructions in reverse order.