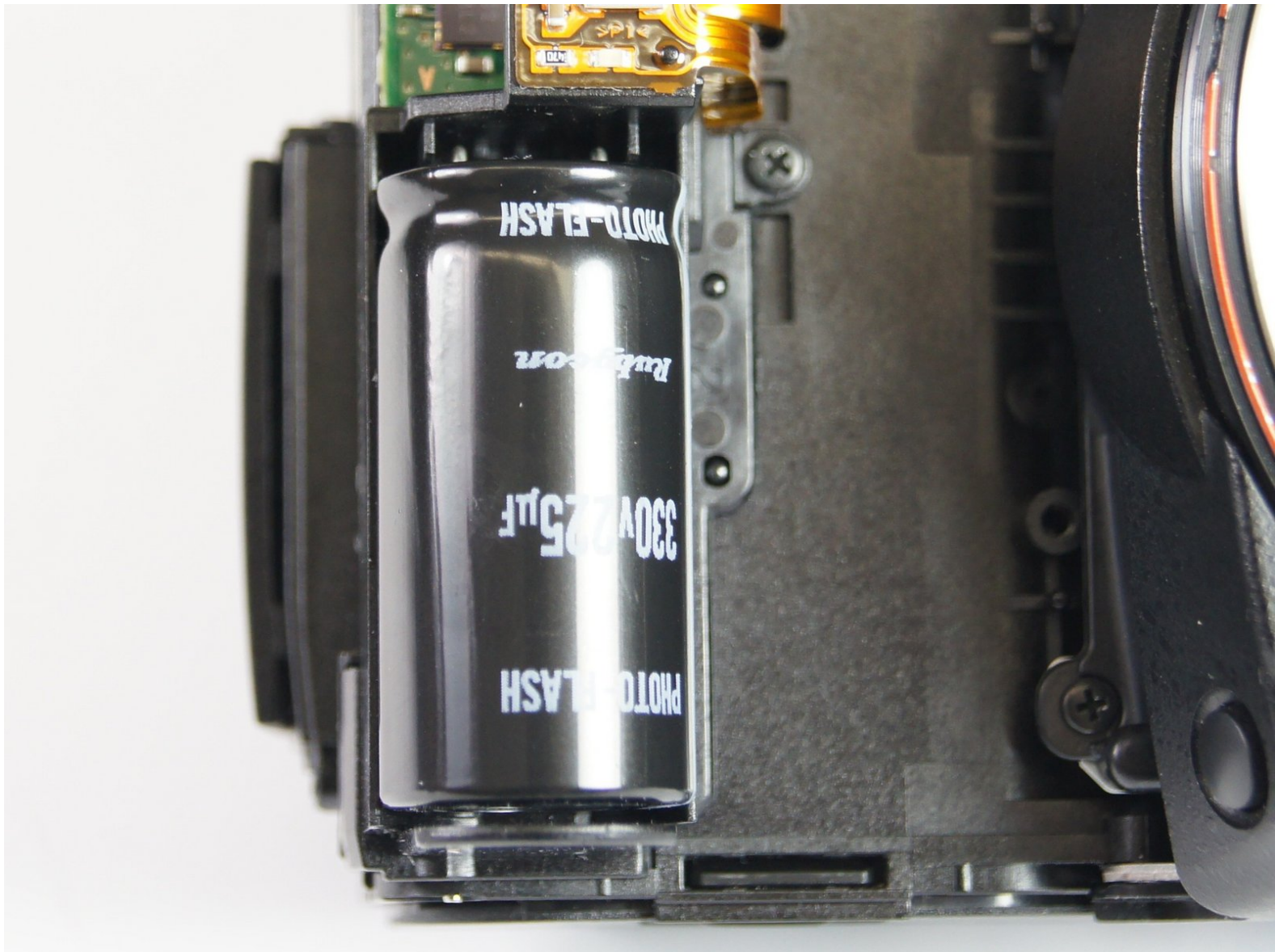




Sony SLT Alpha-65V Flash Capacitor Replacement

How to replace the flash capacitor located on the left side of the camera.

Written By: Dima Kyle



INTRODUCTION

This guide will teach you how to replace the flash capacitor of the Sony SLT Alpha -G5V camera. When taking off the orange circuit ribbon, it is easiest to start with lifting the small hole in the ribbon out of its connecting piece first. The capacitor itself will be soldered into the camera and the entire part must be replaced.



TOOLS:

- [Phillips #00 Screwdriver](#) (1)
 - [Phillips #000 Screwdriver](#) (1)
 - [iFixit Opening Tools](#) (1)
 - [Tweezers](#) (1)
-

Step 1 — Back Panel



- Unscrew the four 4.0 mm Phillips #00 screws with a on the base of the camera below the the scheme that separates the front and back panels.
- Unscrew the 5.0 mm Phillips #00 screw on the bottom right of the camera.

Step 2



- Unscrew the 4.0 mm Phillips #00 screw on bottom of the left side of the camera.
- Unscrew the 5.0 mm Phillips #00 screw near the top of the left side of the camera.

Step 3

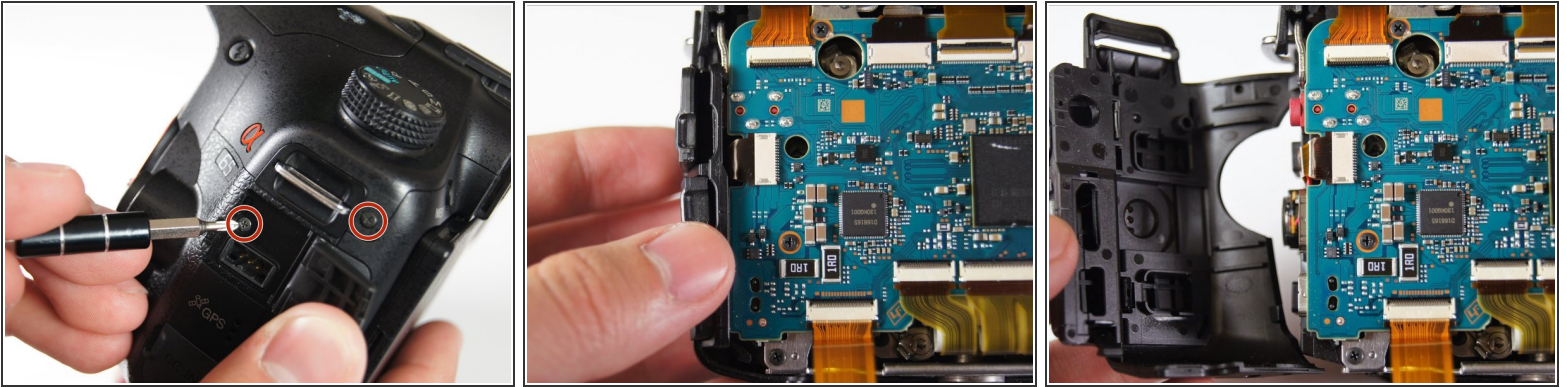


! Be careful when pulling the back panel away as it will still be connected to the body of the camera by two strips of film.

i When unscrewing the 5.0 mm screw on the dial, make sure to hold onto the dial that becomes detached after taking out the screw.

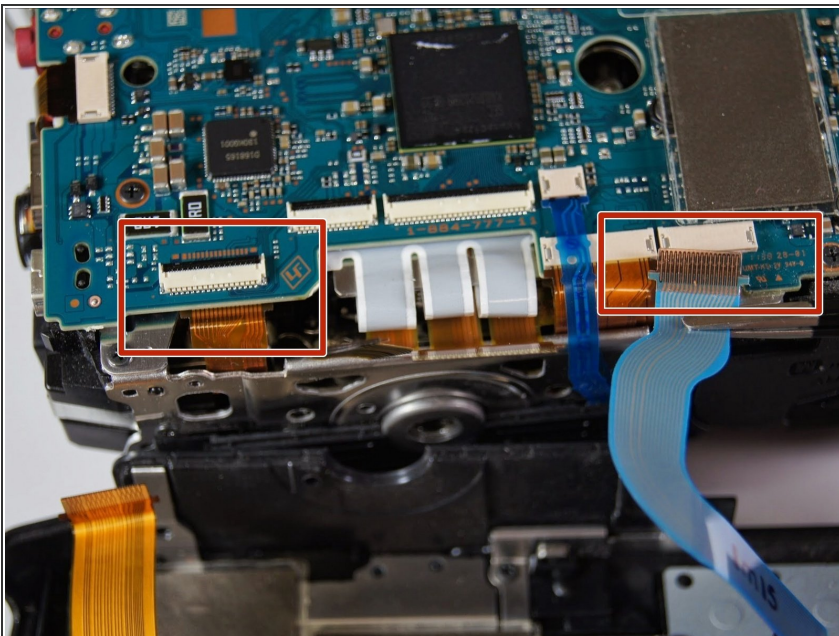
- Unscrew the two 4.0 mm Phillips #00 screw at the top of the camera by the eyepiece.
- Unscrew the 5.0 mm Phillips #00 screw of the dial below the other two screws.
- Once all the screws are removed, carefully use your hands to detach the back panel from the camera. Working around the edges can help as well.

Step 4



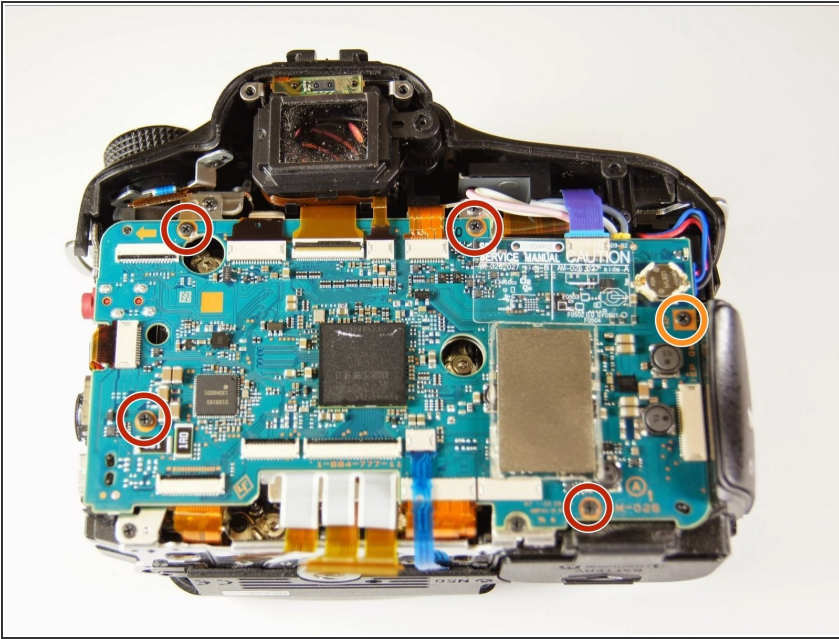
- Remove the two 4.0 mm Phillips #00 screws on the right of the camera that are located on the upper right side and under the "Remote" port flap.
- Detach the right side panel with the remote and HDMI ports of the camera by gently pulling on the panel.

Step 5



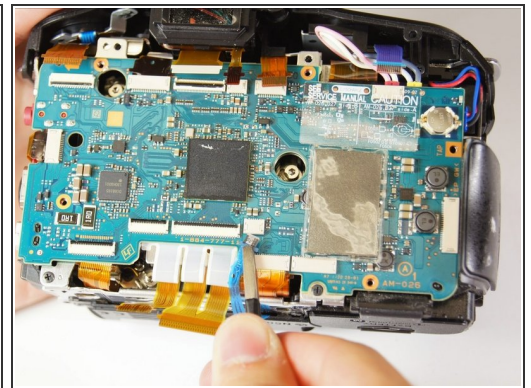
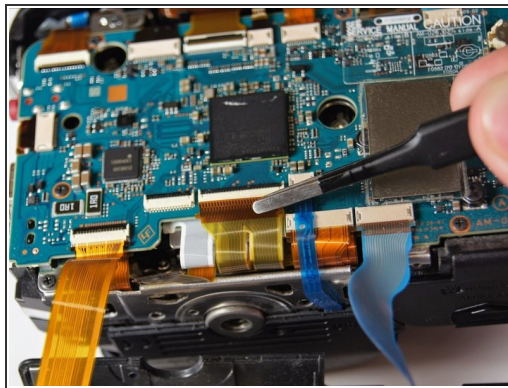
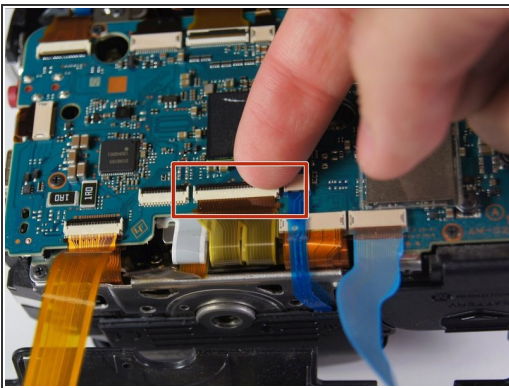
- ⓘ When the back panel is removed, be careful when moving the camera. There are parts inside the camera which now may come loose.
- Use tweezers to remove the blue and orange ribbon connectors from their connection points pictured here.

Step 6 — Motherboard



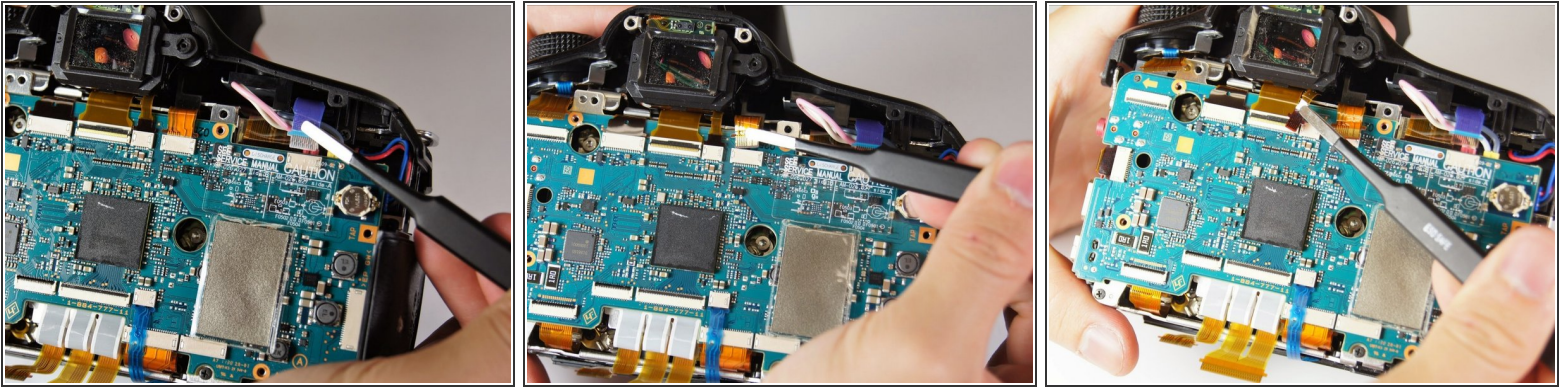
- Remove the four 3.0 mm Phillips #00 screws.
- Remove the 5.0 mm Phillips #00 screw.

Step 7



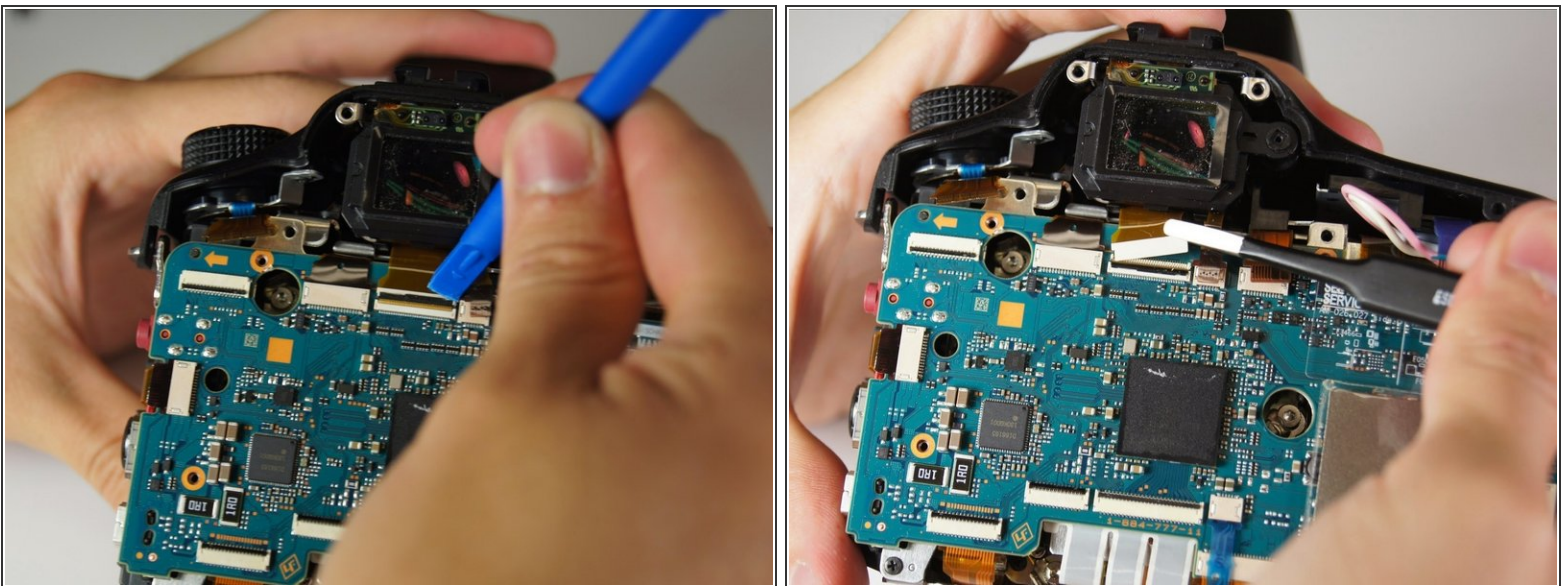
- ☑ Don't forget to close these switches and lock the film back into place when reassembling the camera.
- Use your finger to flip the switch that holds the dual ribbon connector in place.
- Gently use tweezers to disconnect the dual ribbon connector and the thin blue ribbon connector to the right of it from the circuit board.

Step 8



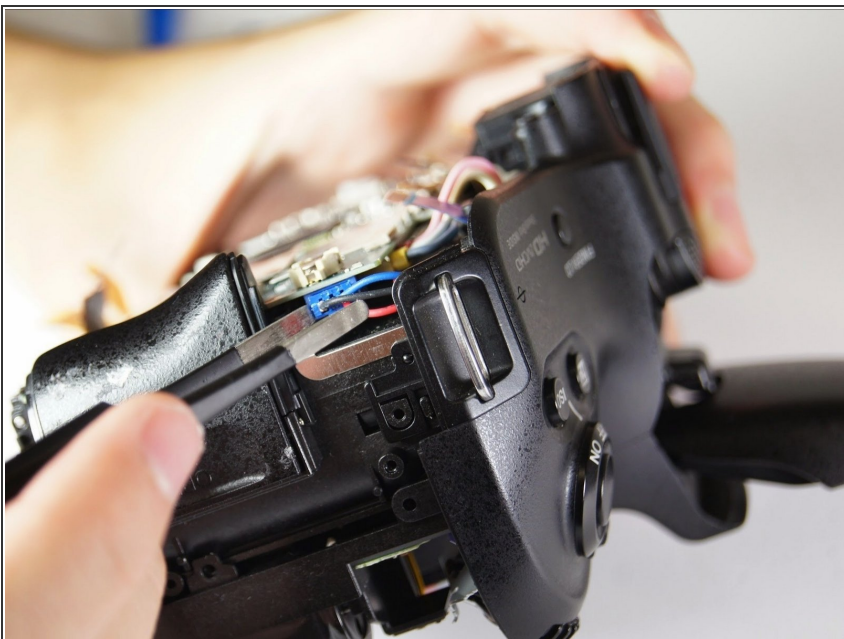
- Use tweezers to disconnect the blue, gold, and brown ribbon connectors near the top of the camera.

Step 9



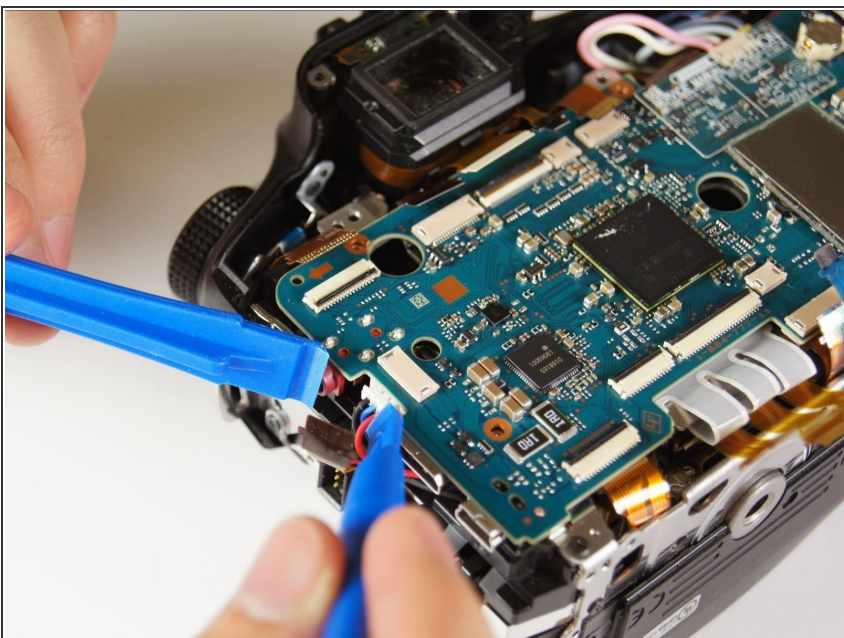
- Use a plastic opening tool to pop open the connector holding the next ribbon to the circuit board.
- Use tweezers to disconnect the ribbon.

Step 10



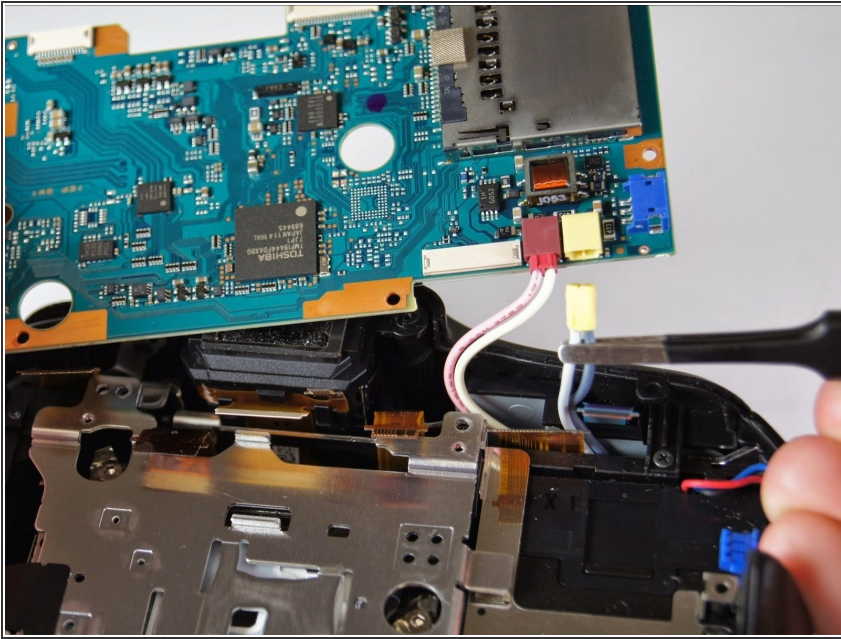
- Use tweezers to unplug the blue adapter located at the top right of the circuit board.


Step 11



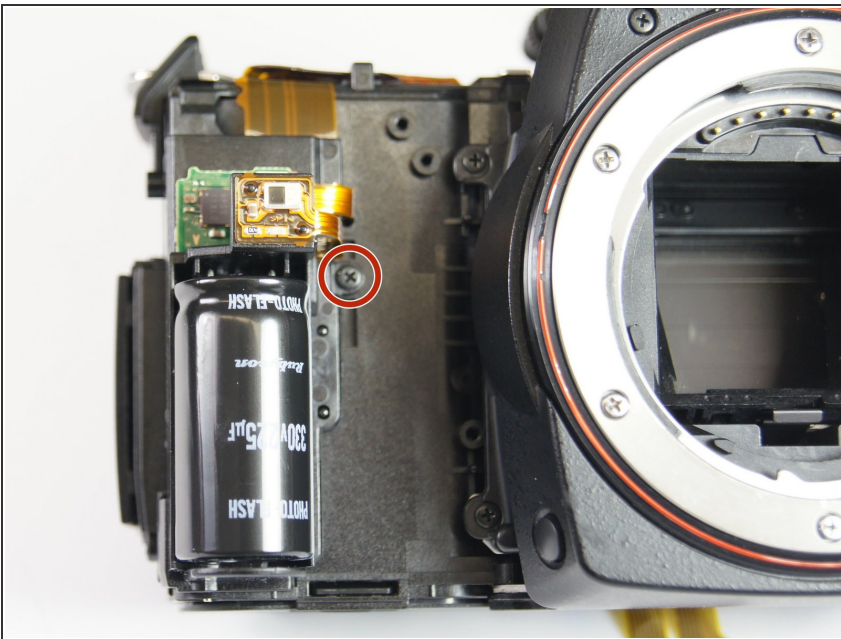
- Use either plastic opening tools or tweezers to unplug the white adapter located on the right side of the circuit board.

Step 12



-  The circuit board will still be connected to the body of the camera by two pairs of cords.
- Gently lift the circuit board away from the camera and turn it over.
 - Use tweezers to disconnect the final two plugs and completely remove the circuit board from the camera.

Step 13 — Flash Capacitor



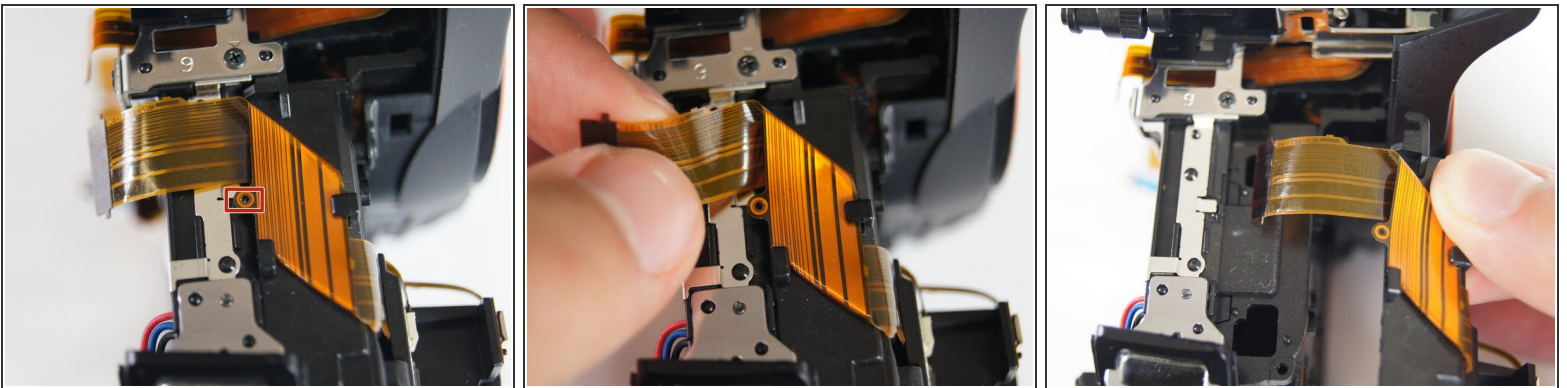
- Remove the 5.0 mm Phillips #00 screw on the right side of the flash capacitor.

Step 14



- Remove the 5.0 mm Phillips #00 screw on the left side of the camera next to the flash capacitor.

Step 15



⚠ The small hole in the ribbon shown with the red square may get caught in the pin it goes around. Make sure to gently lift the ribbon from this point first before anywhere else.

- Gently lift the circuit ribbon off the camera and maneuver the ribbon around the plastic bearings until it comes completely off.
- The flash capacitor will be soldered into the part that detaches from the camera. This entire part will need to be replaced.

To reassemble your device, follow these instructions in reverse order.