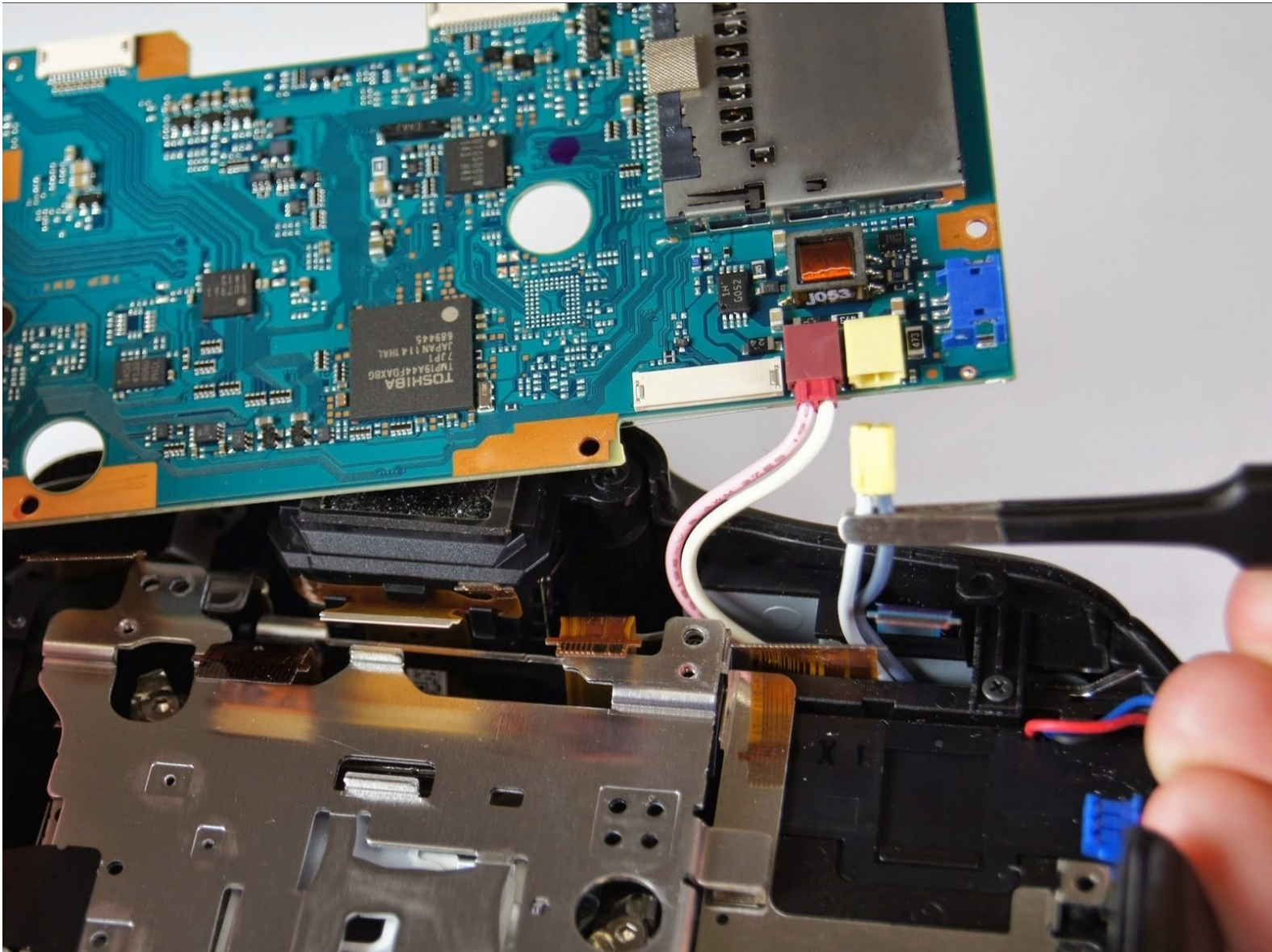




Sony SLT Alpha-65V Motherboard Replacement

How to replace the main circuit board in the back of the camera.

Written By: Alexander Lisso



INTRODUCTION

This guide will show you how to disconnect and remove the main circuit board of the Alpha 65 camera. This requires using a Phillips #00 screwdriver, plastic opening tool, and tweezers. Be sure to keep track of all screws and parts removed from the camera.



TOOLS:

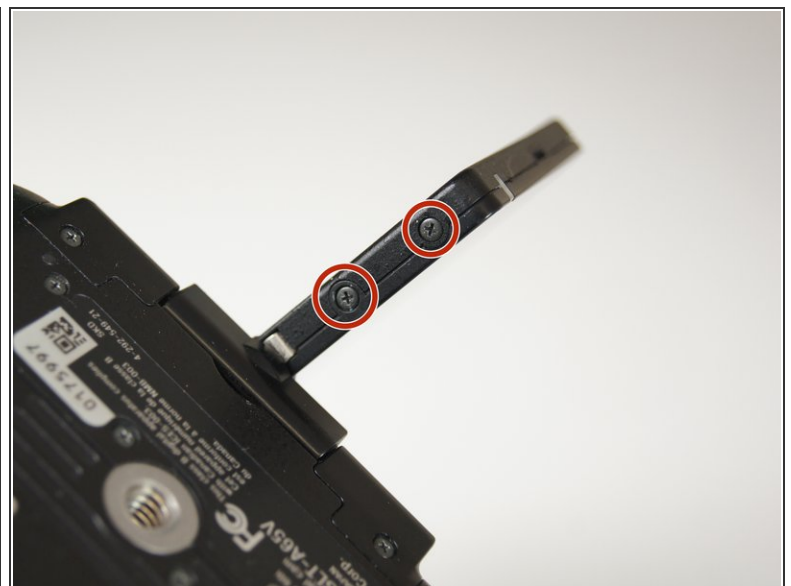
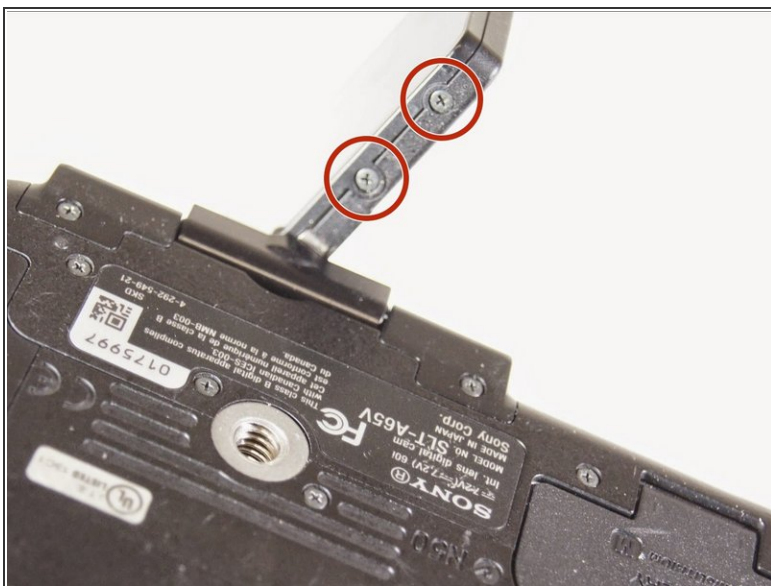
- [Tweezers](#) (1)
 - [iFixit Opening Tools](#) (1)
 - [Phillips #00 Screwdriver](#) (1)
 - [Phillips #000 Screwdriver](#) (1)
-

Step 1 — LCD Screen



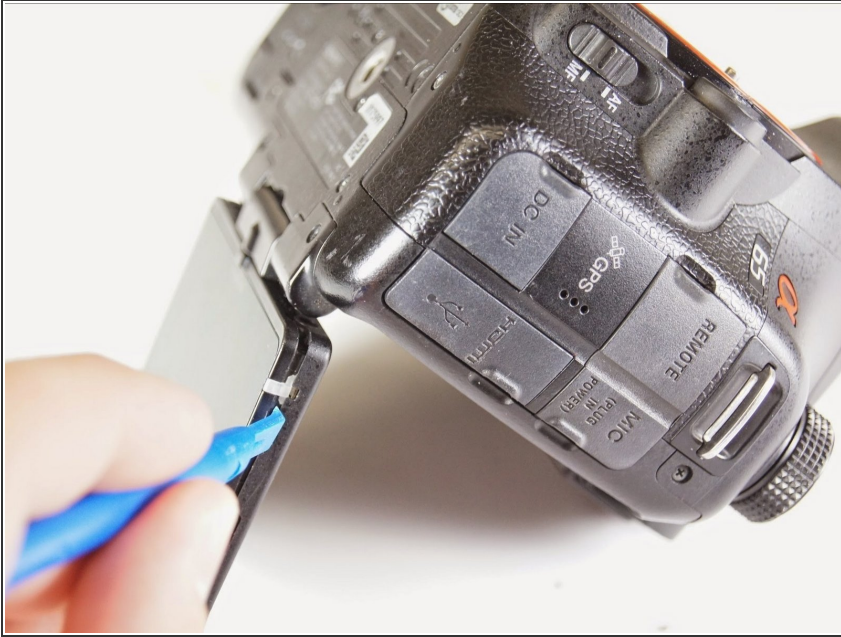
- Remove the two 4.0 mm Phillips #00 screws on the base of the camera.
- Remove the 3.0 mm Phillips #00 screw on the hinge of the screen.

Step 2



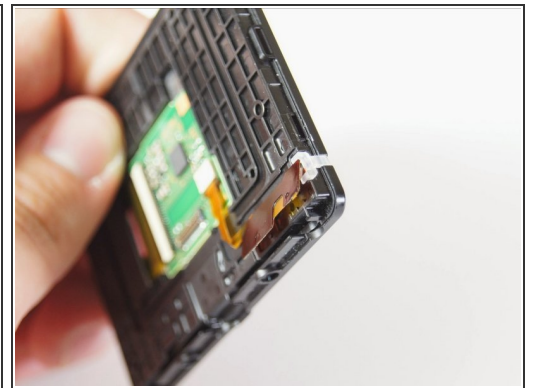
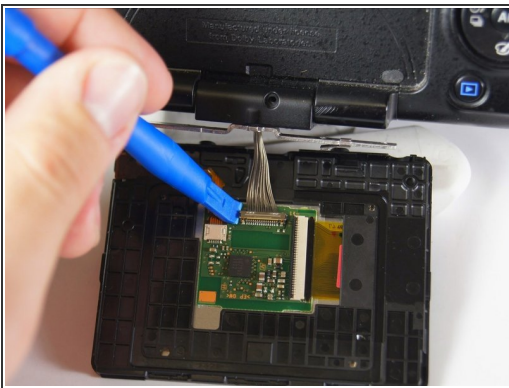
- Remove the two 2.0 mm Phillips #00 screws on the bottom-right side of the screen.
- Remove the two 2.0 mm Phillips #00 screws on the bottom-left side of the screen.


Step 3



- Use the plastic opening tool to gently pry the screen open around the entire screen.

Step 4



 The brown ribbon and white light on the edge of the screen are extremely loose and will fall off. Keep the screen flat at all times to make sure they don't come out.

- Use a plastic opening tool to disconnect the silver wires from the screen's circuitry and completely remove the screen from the camera.

Step 5 — Back Panel



- Unscrew the four 4.0 mm Phillips #00 screws with a on the base of the camera below the the scheme that separates the front and back panels.
- Unscrew the 5.0 mm Phillips #00 screw on the bottom right of the camera.

Step 6



- Unscrew the 4.0 mm Phillips #00 screw on bottom of the left side of the camera.
- Unscrew the 5.0 mm Phillips #00 screw near the top of the left side of the camera.

Step 7

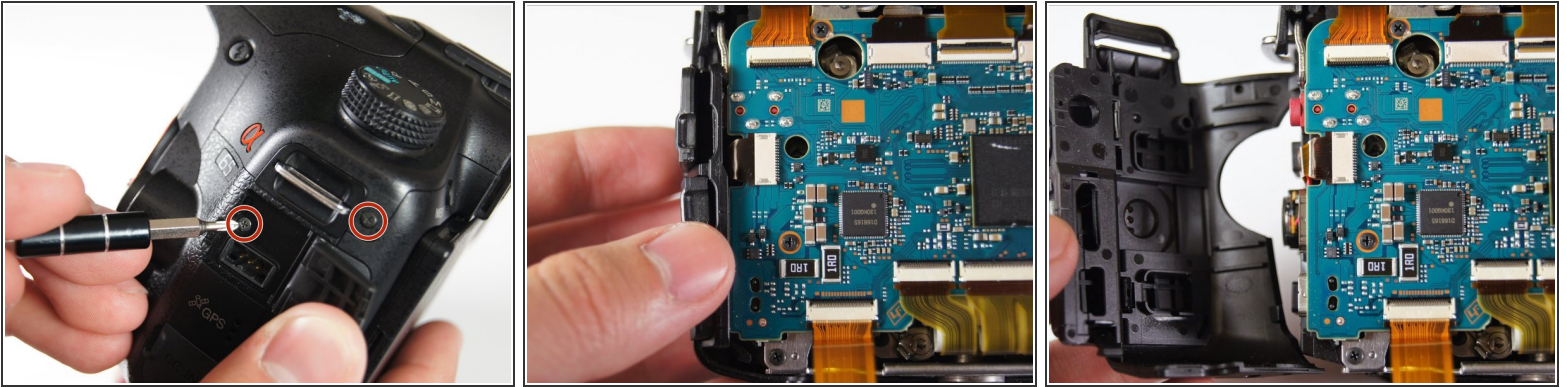


! Be careful when pulling the back panel away as it will still be connected to the body of the camera by two strips of film.

i When unscrewing the 5.0 mm screw on the dial, make sure to hold onto the dial that becomes detached after taking out the screw.

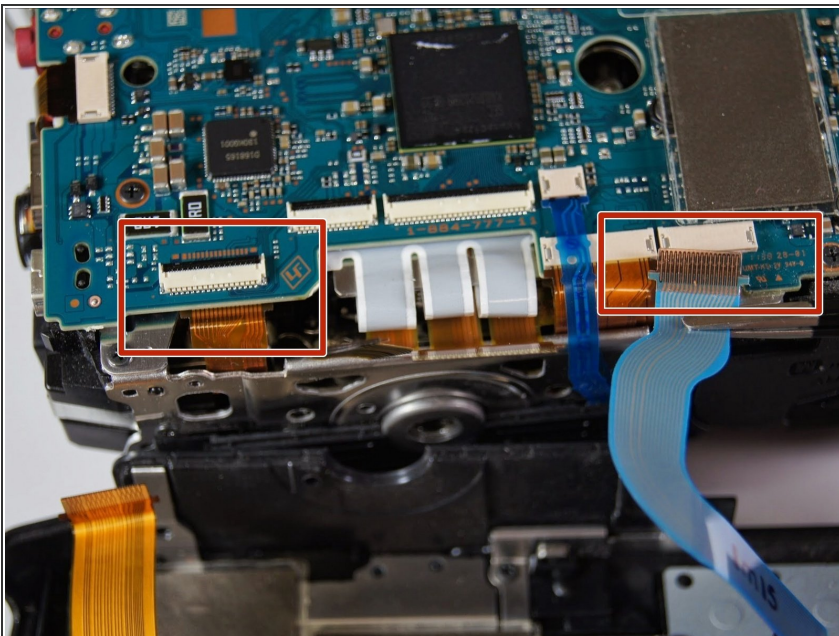
- Unscrew the two 4.0 mm Phillips #00 screw at the top of the camera by the eyepiece.
- Unscrew the 5.0 mm Phillips #00 screw of the dial below the other two screws.
- Once all the screws are removed, carefully use your hands to detach the back panel from the camera. Working around the edges can help as well.

Step 8



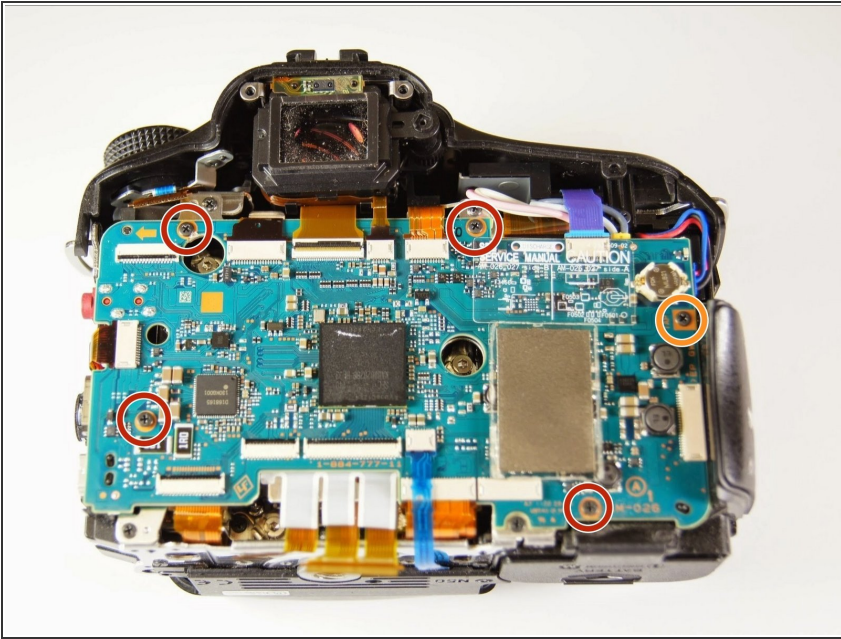
- Remove the two 4.0 mm Phillips #00 screws on the right of the camera that are located on the upper right side and under the "Remote" port flap.
- Detach the right side panel with the remote and HDMI ports of the camera by gently pulling on the panel.

Step 9



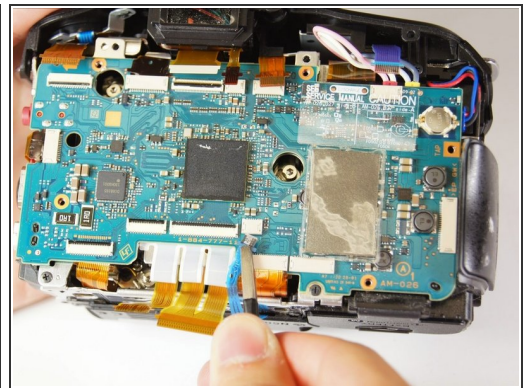
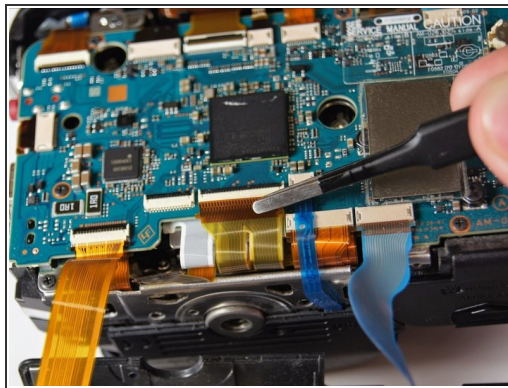
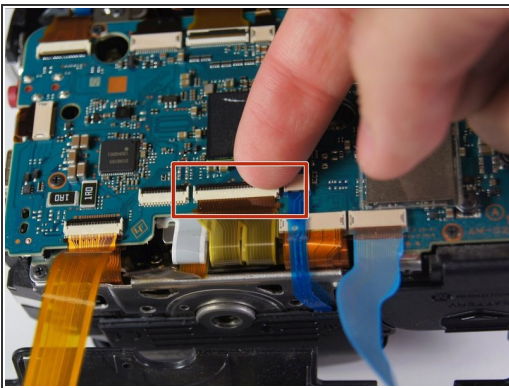
- ⓘ When the back panel is removed, be careful when moving the camera. There are parts inside the camera which now may come loose.
- Use tweezers to remove the blue and orange ribbon connectors from their connection points pictured here.

Step 10 — Motherboard



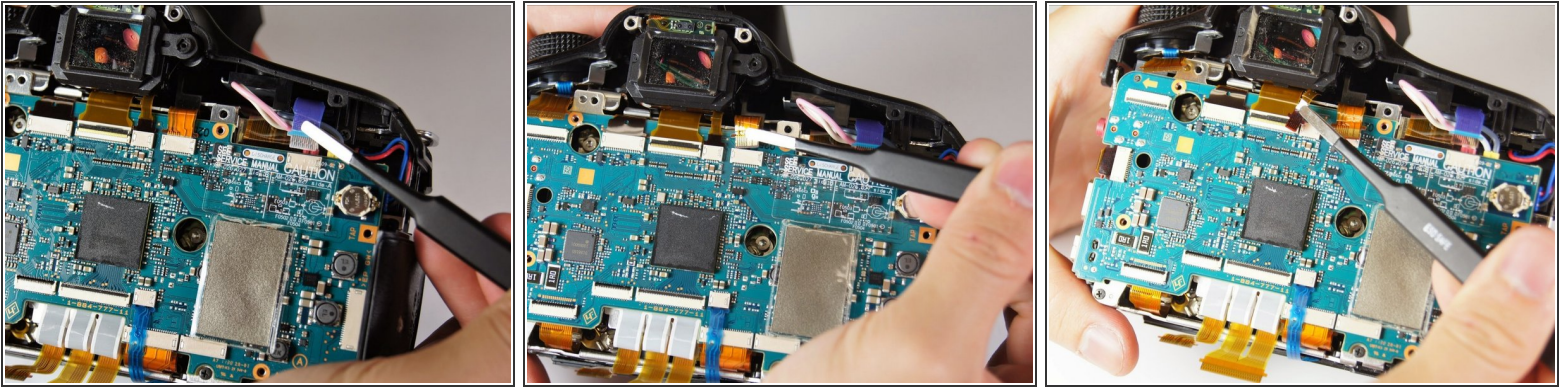
- Remove the four 3.0 mm Phillips #00 screws.
- Remove the 5.0 mm Phillips #00 screw.

Step 11



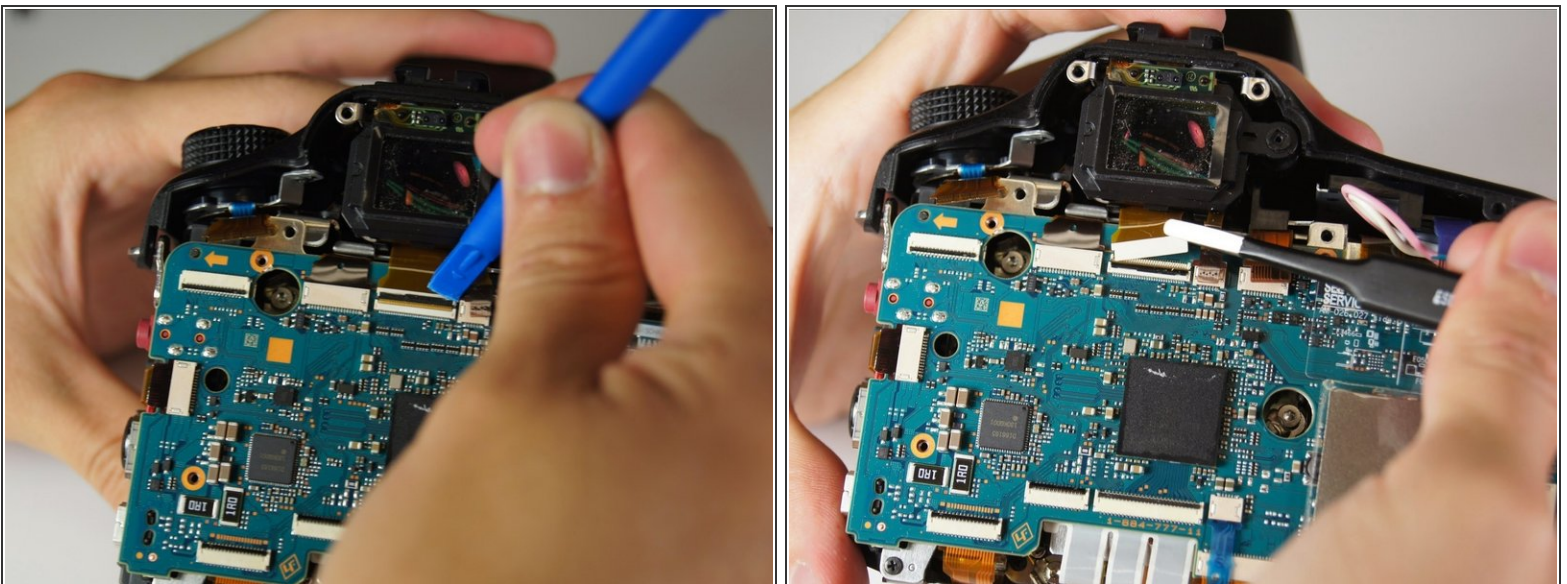
- ☑ Don't forget to close these switches and lock the film back into place when reassembling the camera.
- Use your finger to flip the switch that holds the dual ribbon connector in place.
- Gently use tweezers to disconnect the dual ribbon connector and the thin blue ribbon connector to the right of it from the circuit board.

Step 12



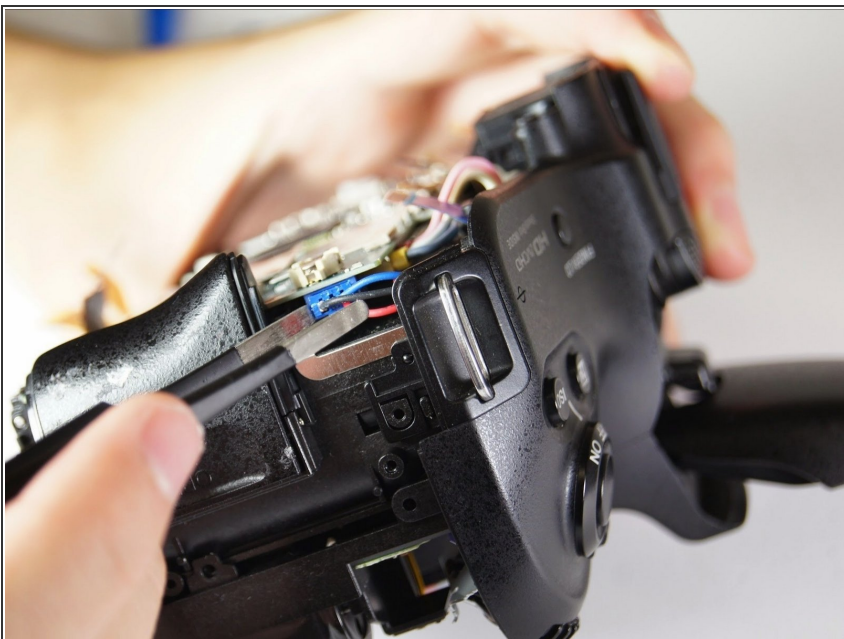
- Use tweezers to disconnect the blue, gold, and brown ribbon connectors near the top of the camera.

Step 13



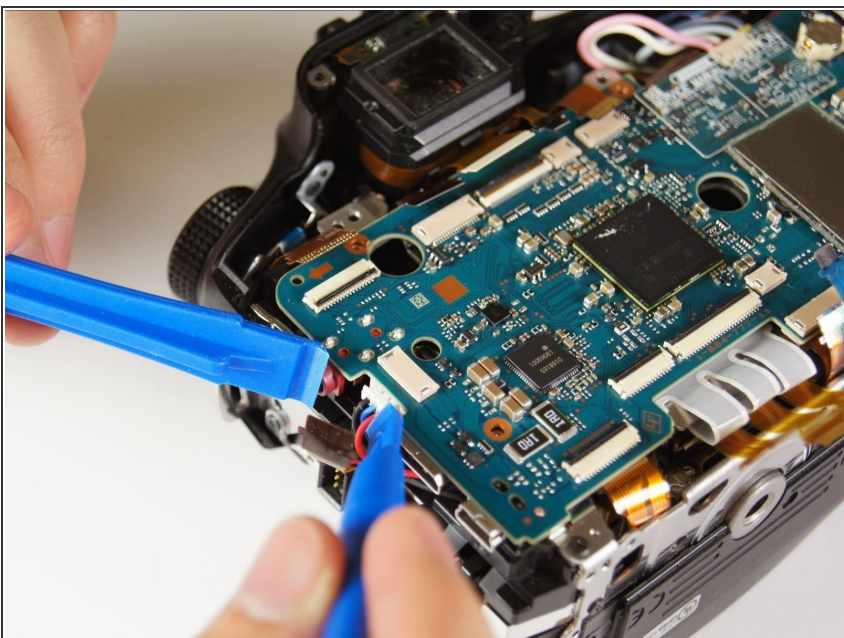
- Use a plastic opening tool to pop open the connector holding the next ribbon to the circuit board.
- Use tweezers to disconnect the ribbon.

Step 14



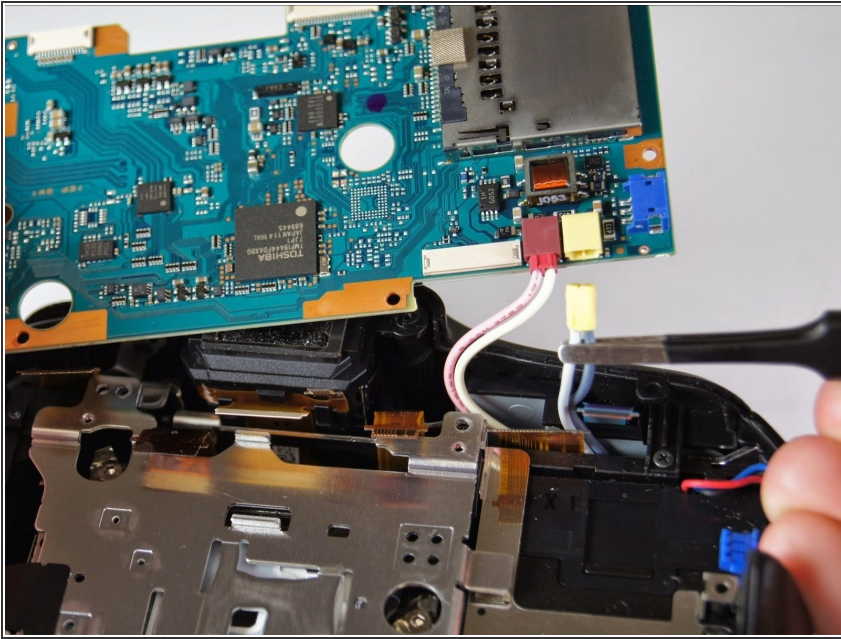
- Use tweezers to unplug the blue adapter located at the top right of the circuit board.

Step 15



- Use either plastic opening tools or tweezers to unplug the white adapter located on the right side of the circuit board.

Step 16



- ⚠ The circuit board will still be connected to the body of the camera by two pairs of cords.
- Gently lift the circuit board away from the camera and turn it over.
 - Use tweezers to disconnect the final two plugs and completely remove the circuit board from the camera.

To reassemble your device, follow these instructions in reverse order.