



Sony SRS-X3 Auxiliary Port Replacement

We will be replacing the auxiliary port on the Sony SRS-X3 portable bluetooth speaker

Written By: Andrew Troyer





TOOLS:

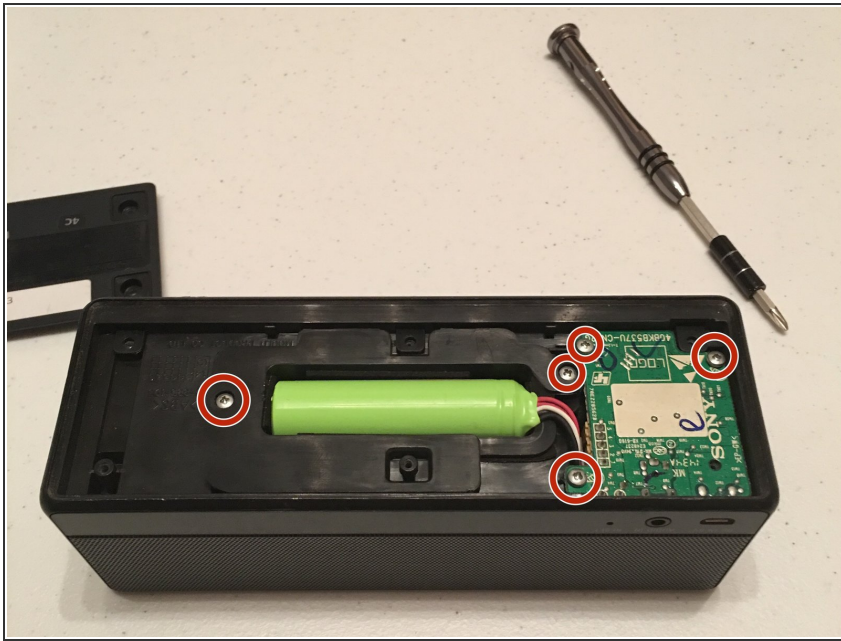
- [Phillips #1 Screwdriver](#) (1)
-

Step 1 — Auxiliary Port Replacement



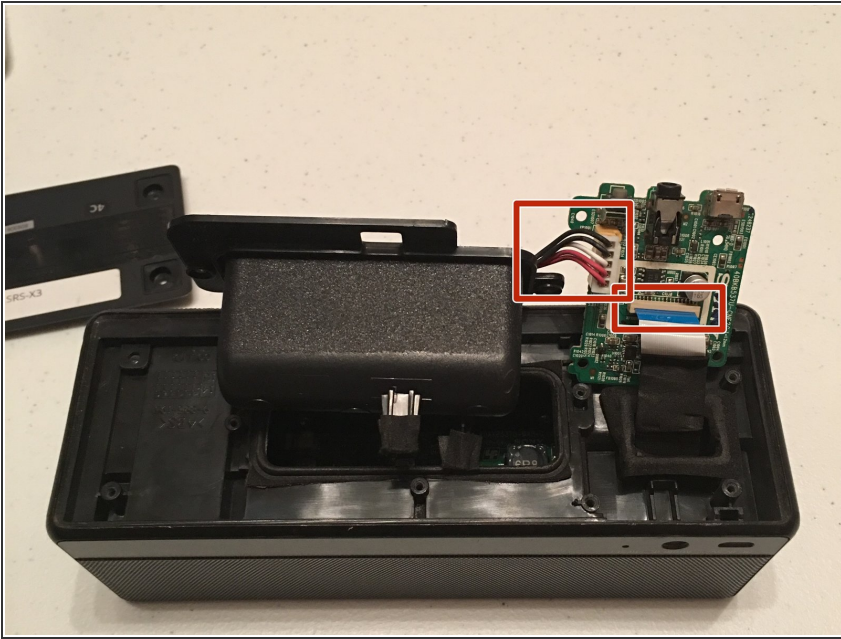
- Remove the 6 philips head screws using the screwdriver and the PH1 bit

Step 2



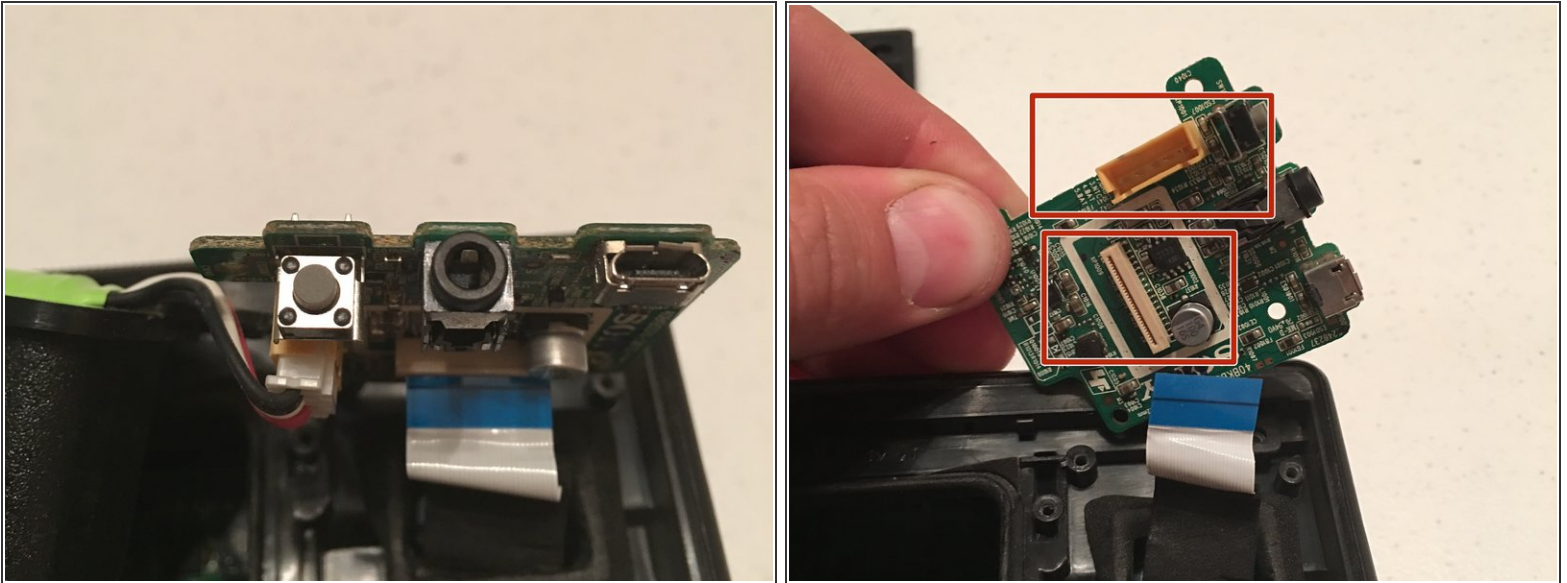
- Remove 5 philips head speakers holding in the battery and the green circuit board. 2 screws holding in the battery and 3 holding the circuit board.

Step 3



- Pick out the battery pack and the green circuit board so that you can see the ribbon wire and the wire running from the battery pack to the circuit board.

Step 4



- Remove the ribbon wire and the connector coming from the battery pack to the circuit board.
- These connectors will not easily pull out, so you might have to give them a tug. They aren't very fragile, so don't worry about shredding them.
- After this step, simply insert a new circuit board and you're done! Reassemble the speaker and start jamming!

To reassemble your device, follow these instructions in reverse order.