



Sony SRS-X3 Speakers Replacement

This guide shows how to replace either one or both speakers in the Sony SRS-X3 bluetooth speaker.

Written By: Andrew Troyer



INTRODUCTION

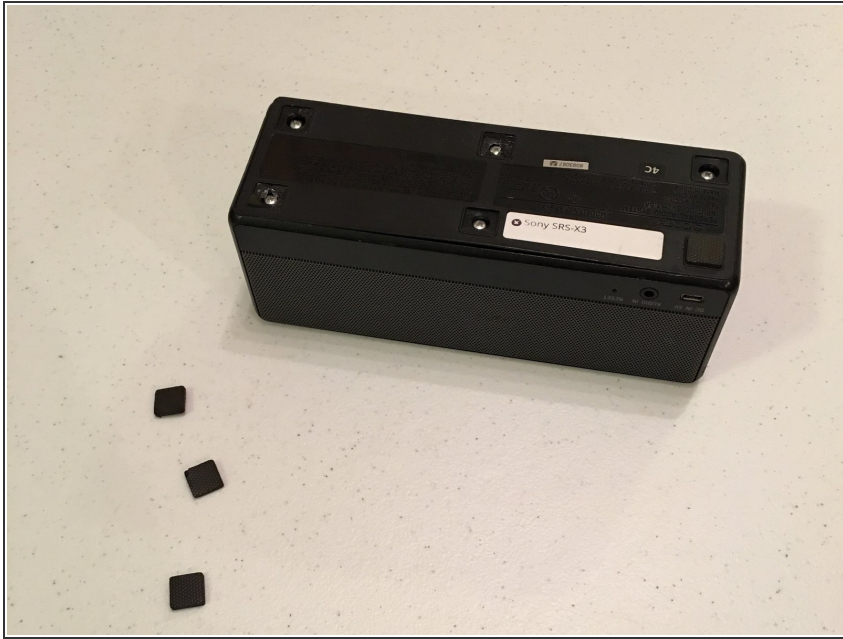
On this guide, the aim is to teach how to disassemble the Sony SRS-X3 bluetooth speaker in order to replace the speakers in the unit. This teardown is fairly simple, and only requires two tools. This speaker replacement is being completed because of a humming sound coming from the unit when music is being played.



TOOLS:

- [Metal Spudger](#) (1)
- [Phillips #1 Screwdriver](#) (1)

Step 1 — Speakers



- Remove rubber feet on the bottom of the device

Step 2



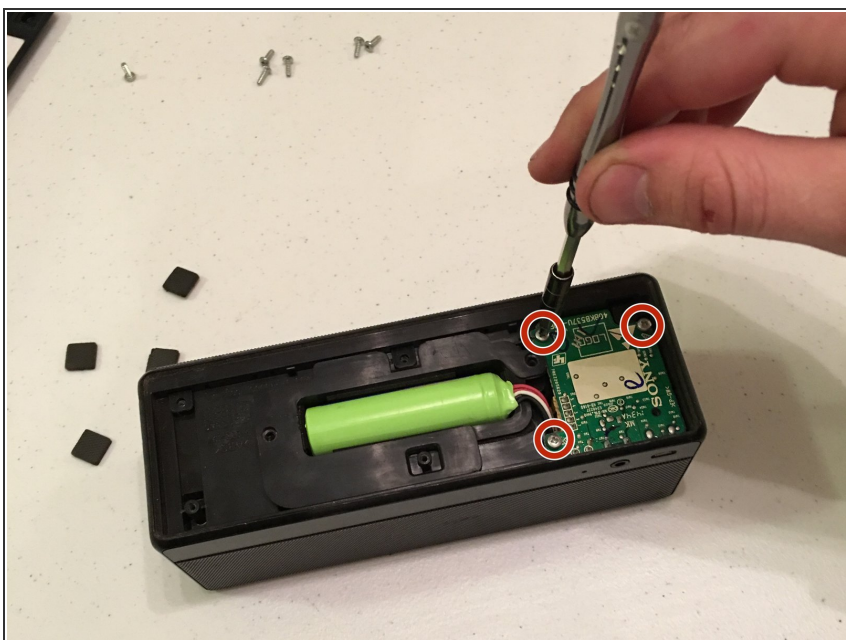
- Remove 6 silver philips head screws with PH1 bit
- Remove bottom plastic cover of speaker

Step 3



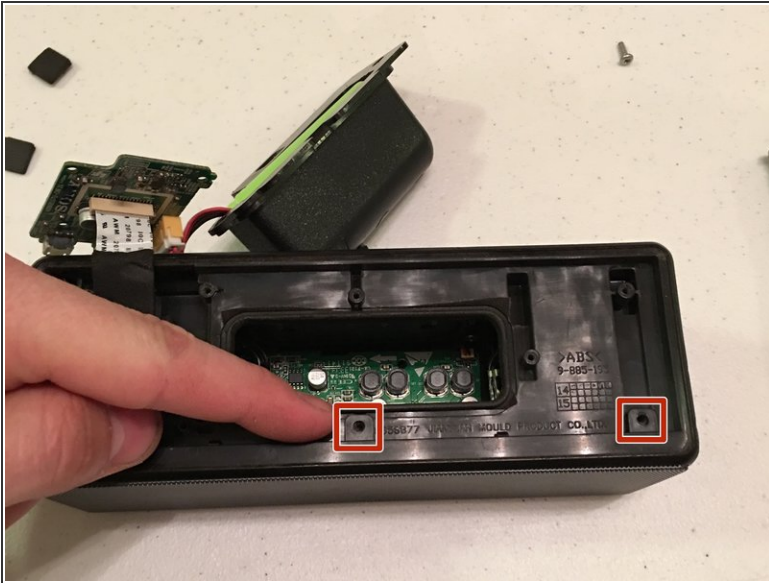
- Remove 2 phillips head screws holding battery pack with PH1 bit
- Remove battery back with spudger

Step 4



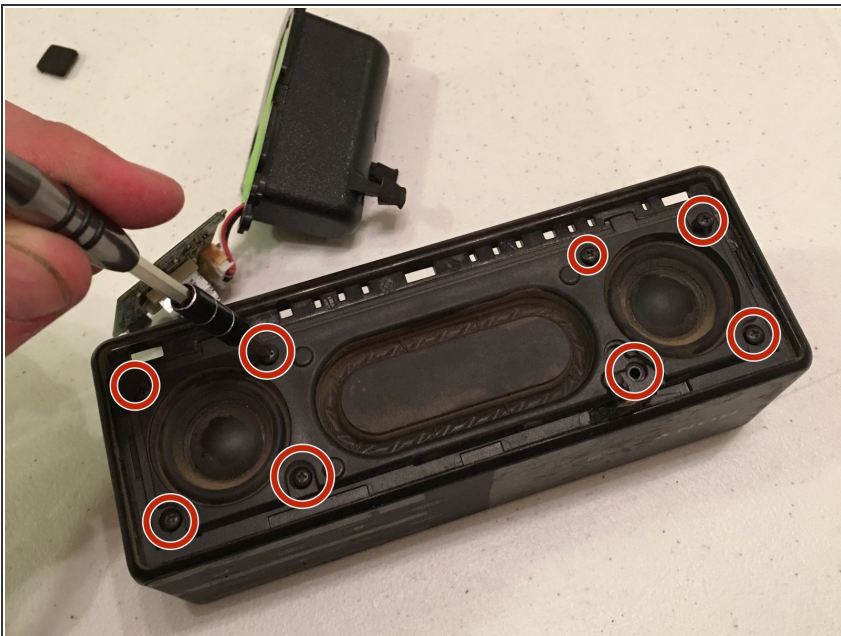
- Unscrew 3 phillips head screws using PH1 bit
- Remove green board. Battery pack and green circuit board should still be connected to the speaker by a ribbon wire. This is normal.

Step 5



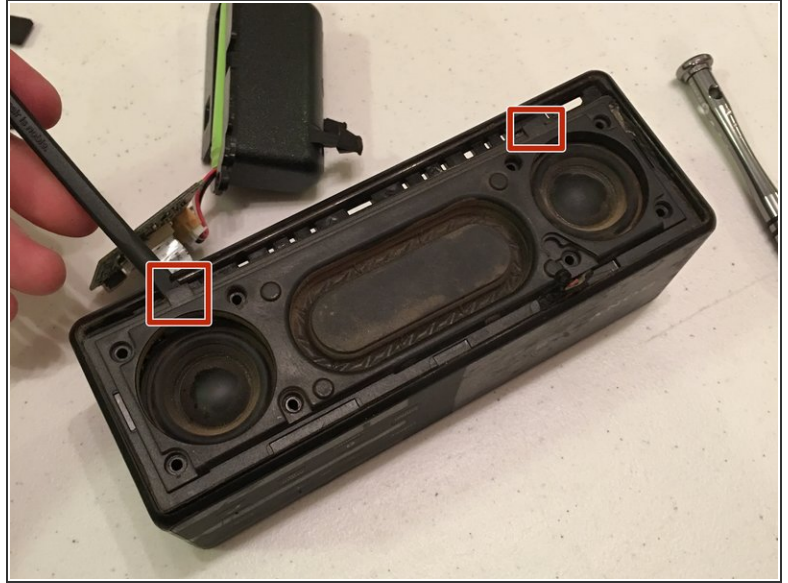
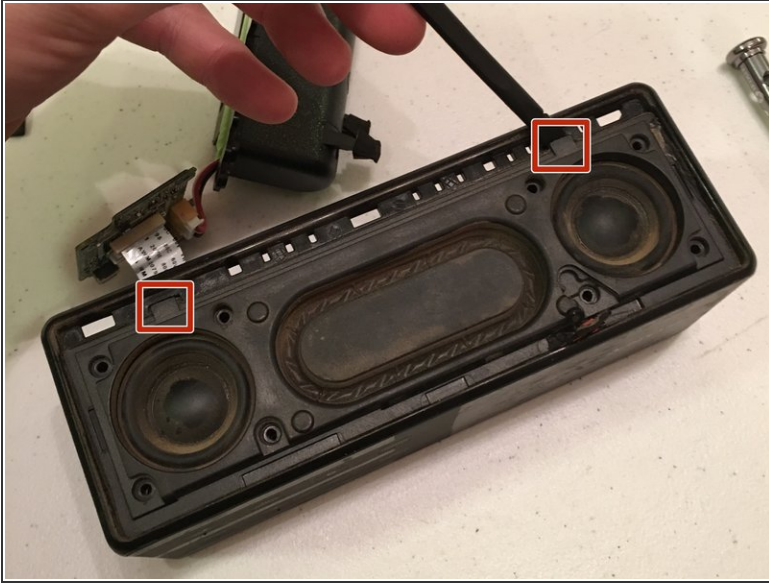
- Pop off front speaker face (dark grey with little holes) by pushing out 3 tabs where screws were previously located and sticking spudger in crack where grey speaker face meets the outer shell
- You may really have to pry on this part, it is not easy to remove and will pop out when released

Step 6



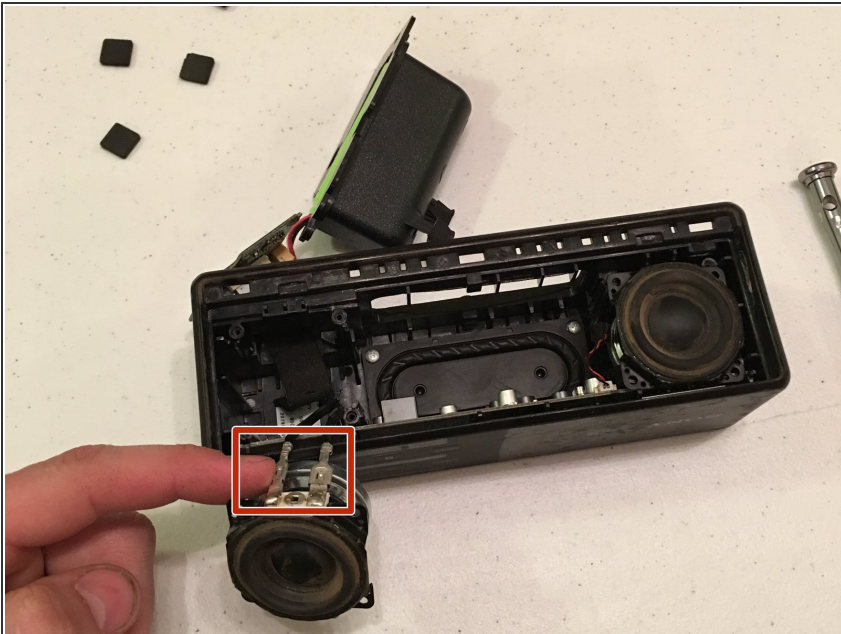
- Remove 8 black phillips head screws shown with PH1 bit

Step 7



- Remove front face by prying 2 black tabs shown using spudger
- This face is glued in and may need some elbow grease to remove. Don't worry about breaking anything, as it is all connected

Step 8



- Remove speaker wires from each speaker (2 wires per speaker) and take speakers out of device
- Speaker wire connectors are made to connect very snug, so they should be hard to remove. Give it a good tug and they should pop off the male end

Step 9



- You can now replace your speakers and reassemble this unit. If replacing the mother board continue with steps 10-14 in the mother board repair guide.

To reassemble your device, follow these instructions in reverse order.