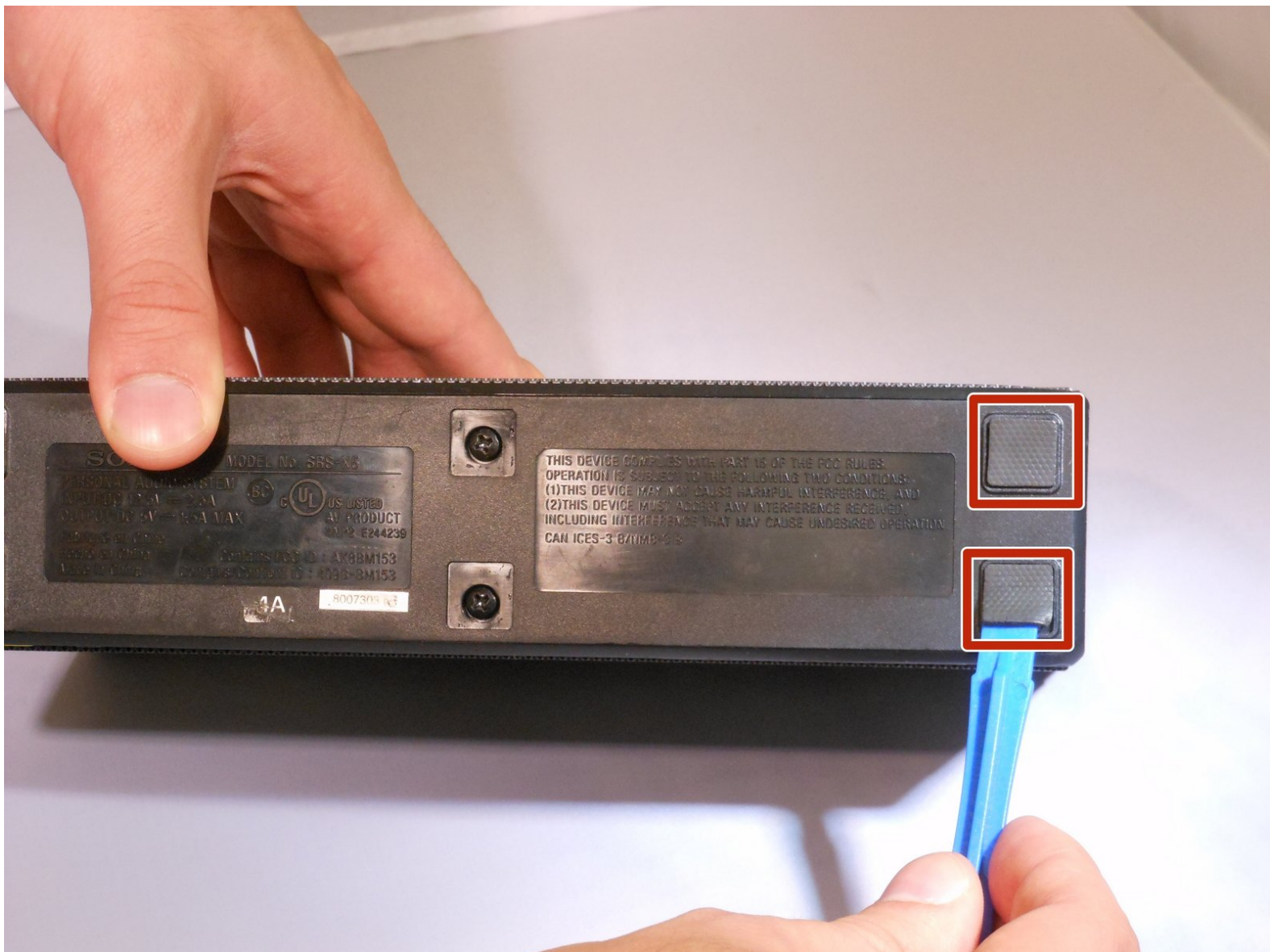




Sony SRS-X5 Battery Replacement

Use this guide to replace the battery in your Sony SRS-X5 Bluetooth speaker.

Written By: Carrie Cutler



INTRODUCTION

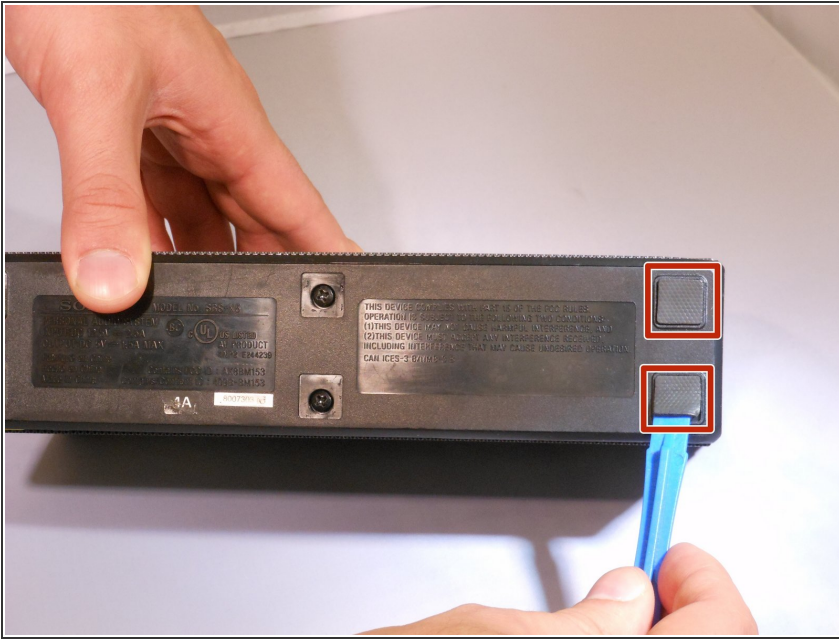
This guide will demonstrate how to remove the malfunctioning battery from the Sony SRS-X5 Bluetooth speaker.




TOOLS:

- [iFixit Opening Tools](#) (1)
 - [Phillips #1 Screwdriver](#) (1)
-

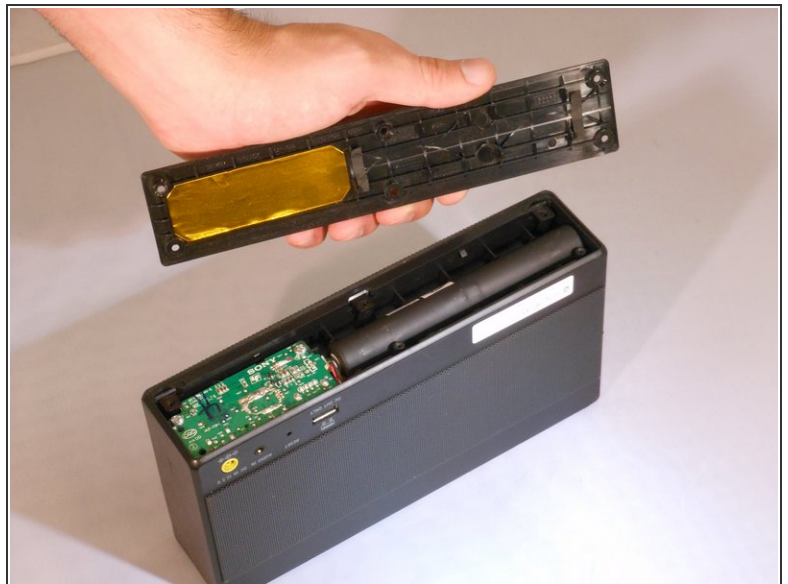
Step 1 — Battery



- Remove the pads on the bottom of the speaker using the blue plastic opening tool to reveal the screws underneath.

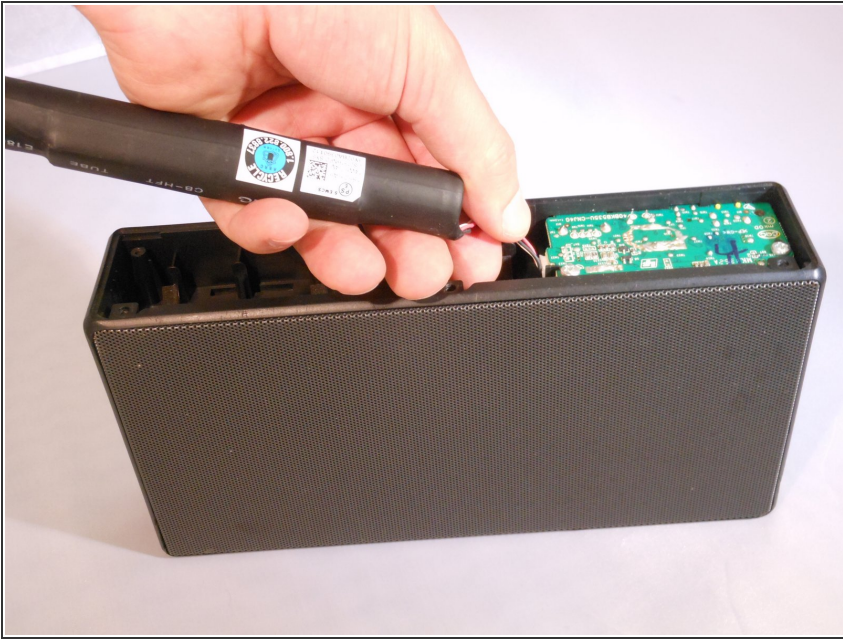
 Make sure the speaker is unplugged and powered down before doing any work on the device.

Step 2



- Unscrew the six 6mm screws with a Phillips head #1 screwdriver.
- Remove the bottom panel of the speaker.

Step 3



- Unplug the battery by gently pinching the plastic end connected to the smaller board and pull away.
- Remove the battery.

To reassemble your device, follow these instructions in reverse order.