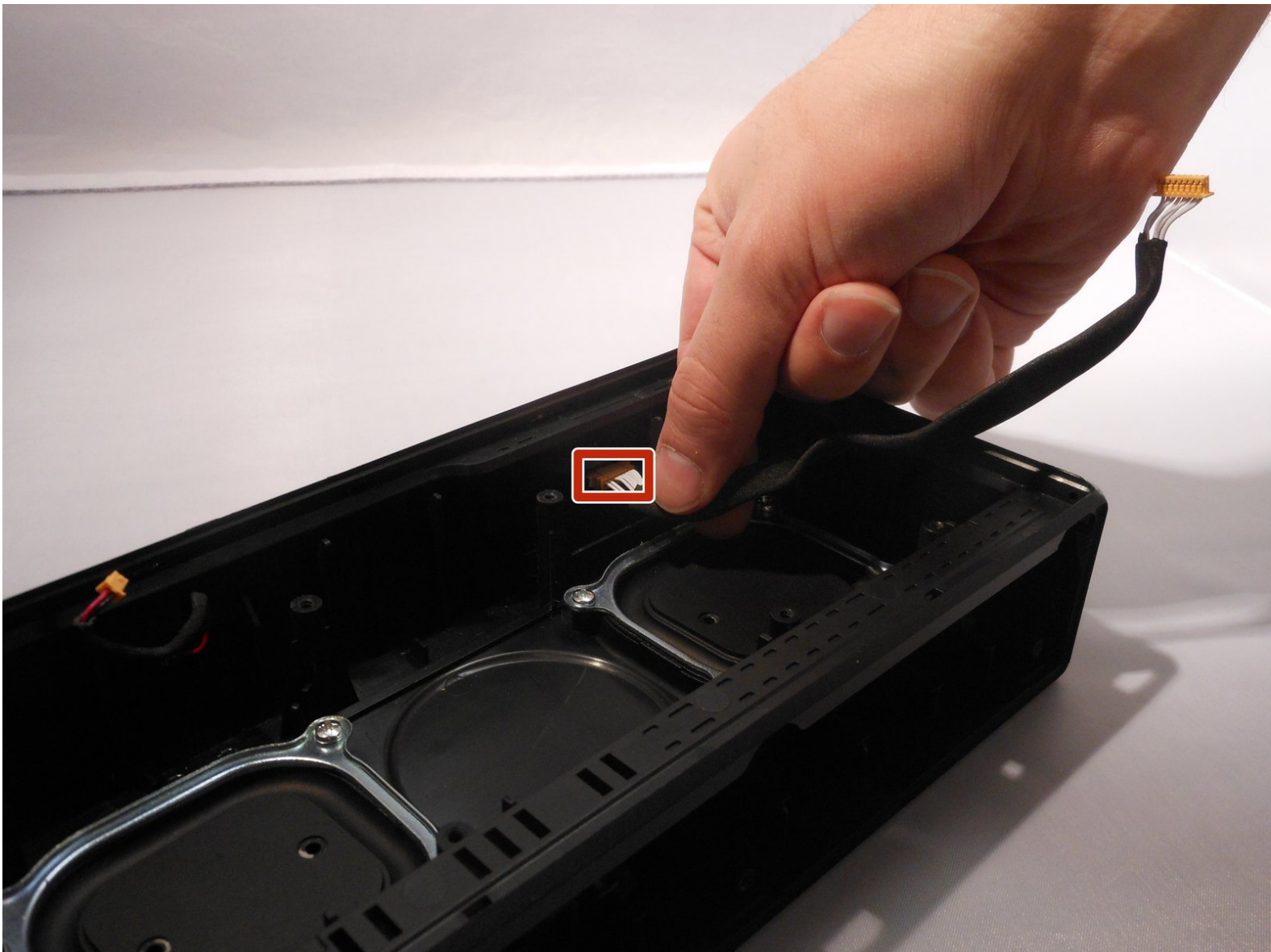




# Sony SRS-X5 Button Pad Replacement

When the buttons stop working, this guide will help in replacing the button pad.

Written By: Jeffrey Yalung



# INTRODUCTION

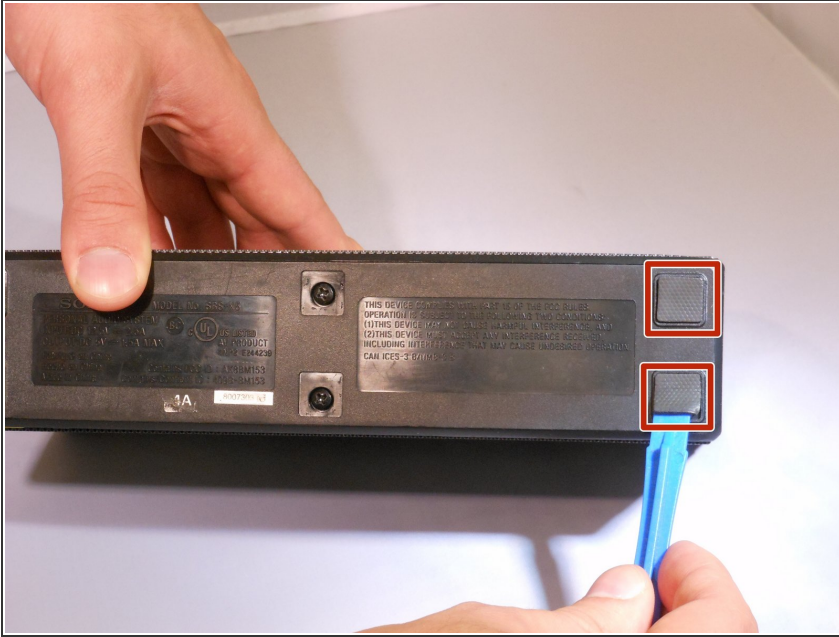
This guide will demonstrate how to remove the sticky button pad.




## TOOLS:

- [Phillips #1 Screwdriver](#) (1)
  - [Metal Spudger](#) (1)
  - [iFixit Opening Tools](#) (1)
  - [Phillips #00 Screwdriver](#) (1)
-

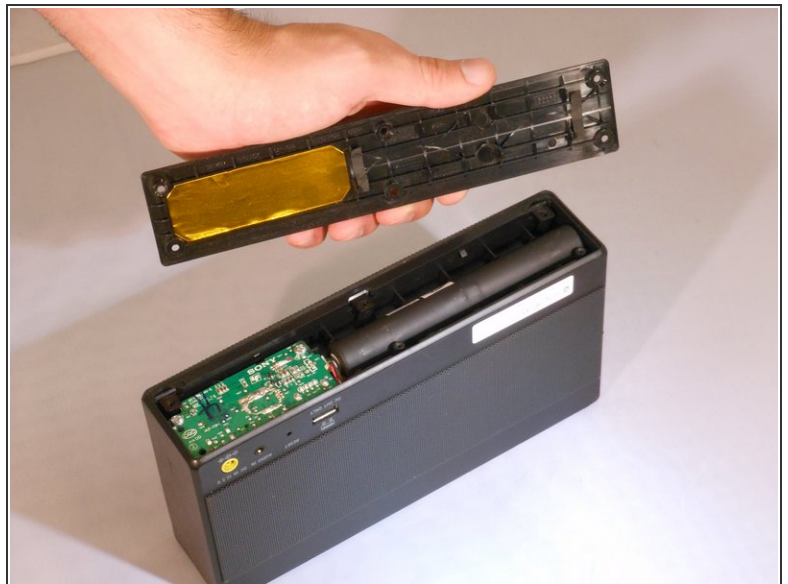
## Step 1 — Battery



- Remove the pads on the bottom of the speaker using the blue plastic opening tool to reveal the screws underneath.

 Make sure the speaker is unplugged and powered down before doing any work on the device.

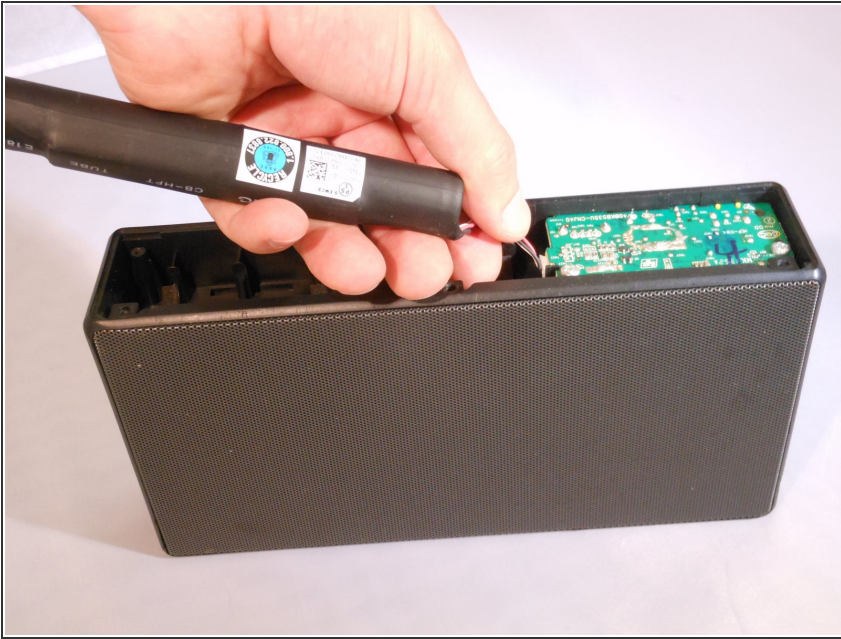
## Step 2



- Unscrew the six 6mm screws with a Phillips head #1 screwdriver.
- Remove the bottom panel of the speaker.

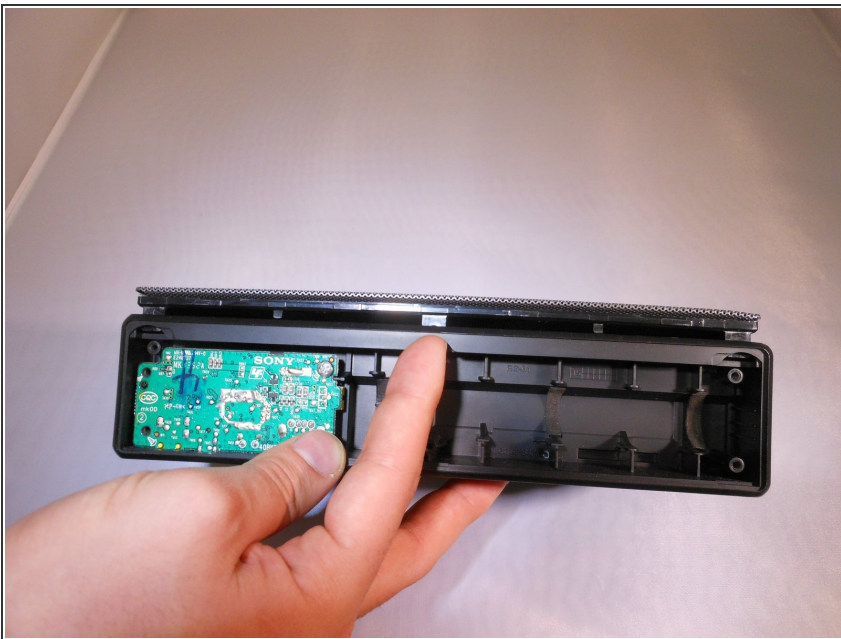


### Step 3



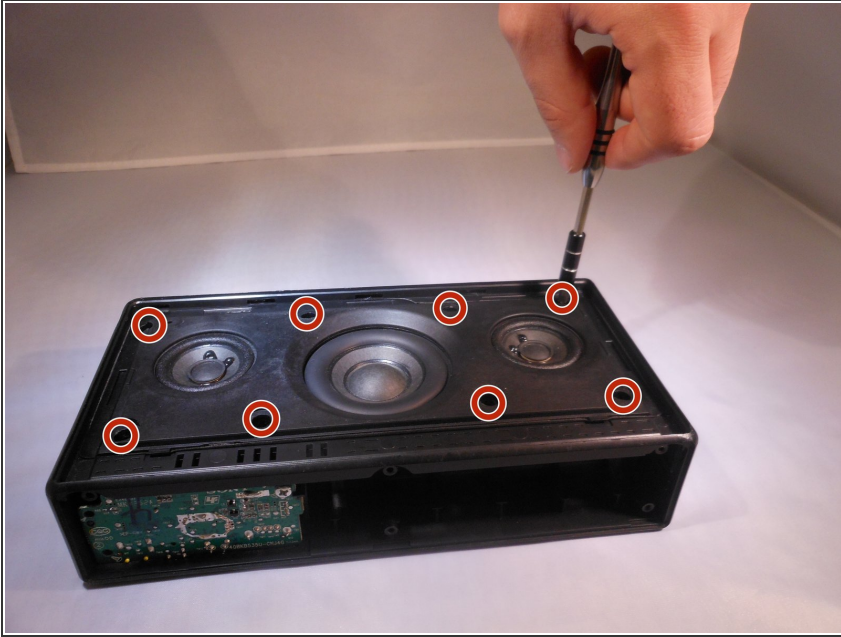
- Unplug the battery by gently pinching the plastic end connected to the smaller board and pull away.
- Remove the battery.

### Step 4 — Speaker



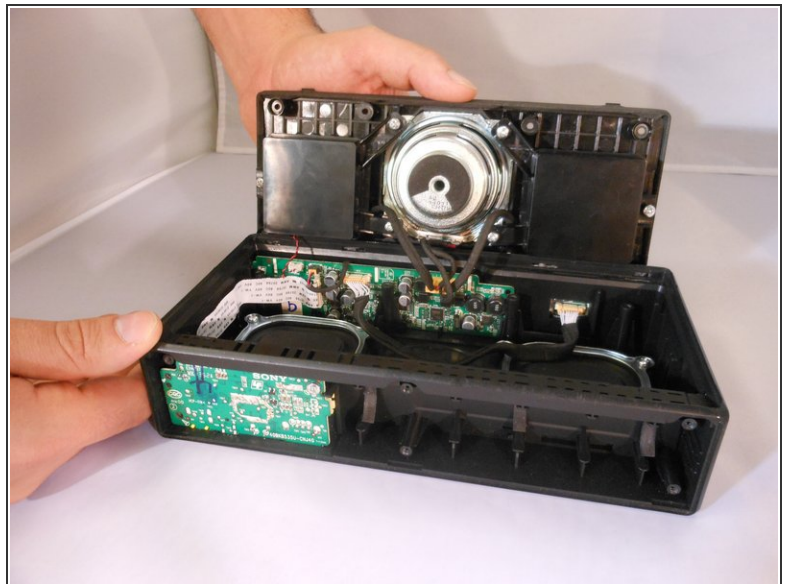
- Remove the lower frame by pushing the middle plastic tab upward.

## Step 5



- Remove the eight 0.5mm Phillips #1 screws from the speaker panel.

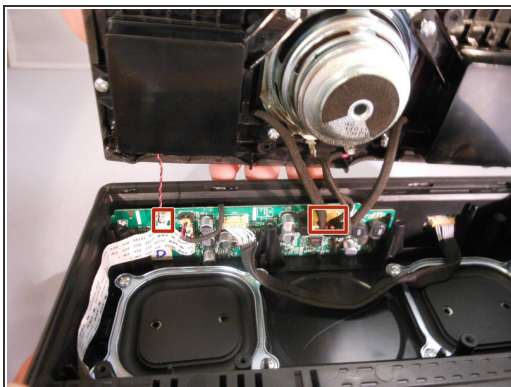
## Step 6



- Using the plastic opening tool, flip open the speaker panel.



## Step 7



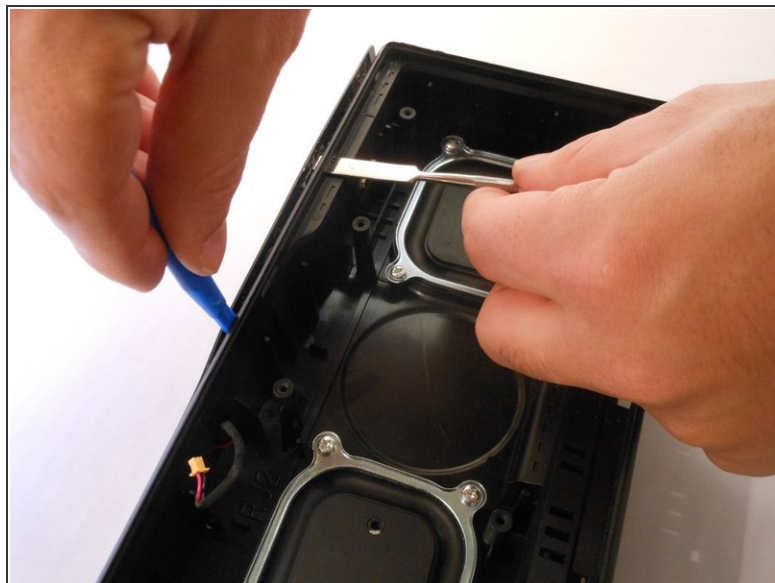
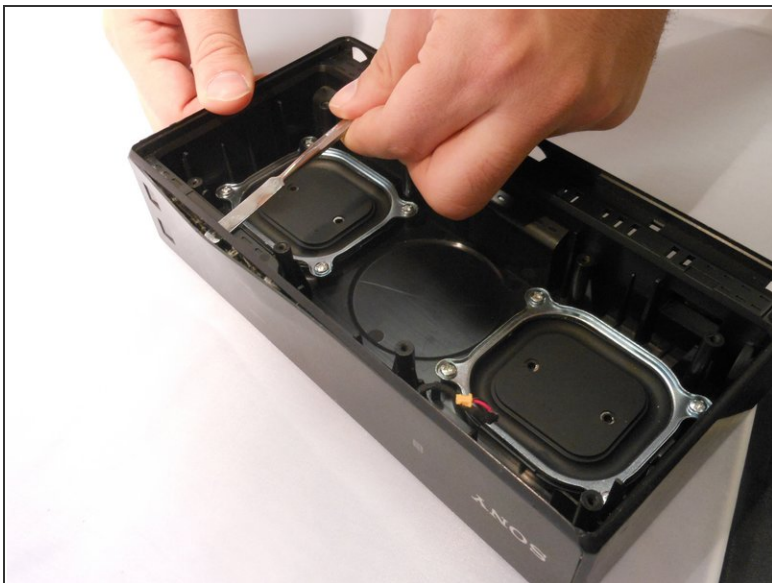
- Unplug the two cables connecting the speaker to the motherboard by squeezing the sides of the plastic ends.

## Step 8 — Button Pad



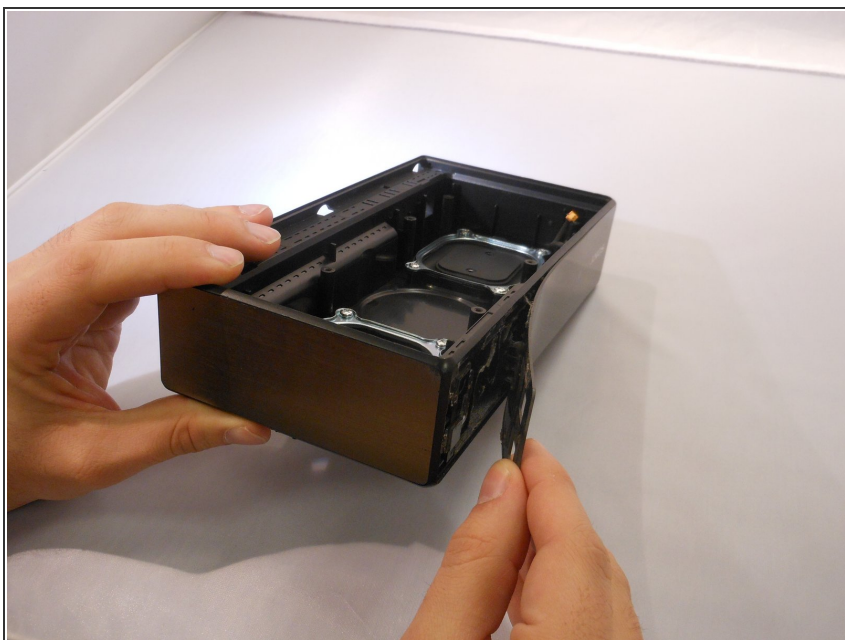
- Unplug the electrical cord from the button pad.

## Step 9



- Using both the plastic opening tool and metal spudger gently pry open the cover from the top of the speaker.

## Step 10



- Gently remove the cover using your hands.
- ⓘ Make sure you remove the cover gently so it doesn't break.

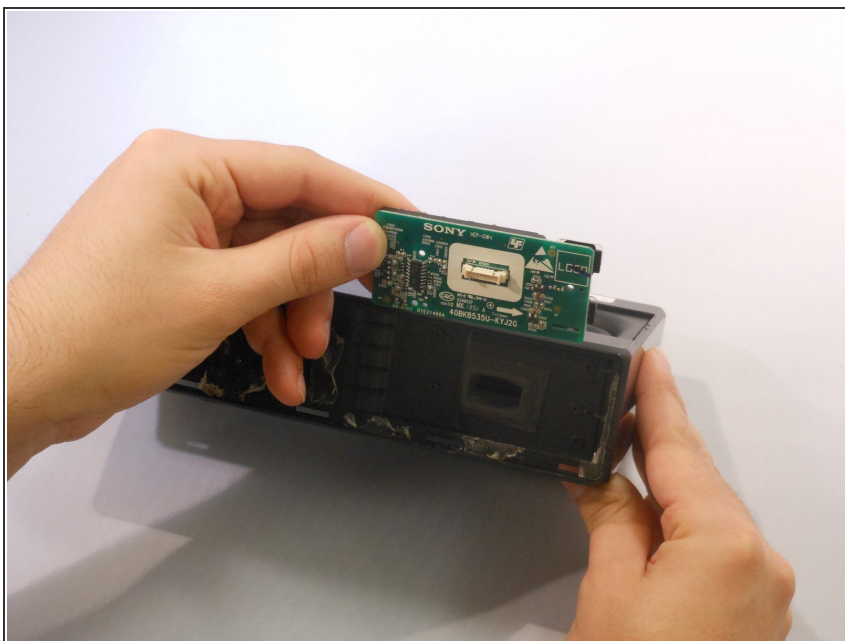


## Step 11



- Using the Phillips #00, unscrew the three 3.32mm screws keeping the button board in place.

## Step 12



- Gently remove the button pad from the speaker.

To reassemble your device, follow these instructions in reverse order.