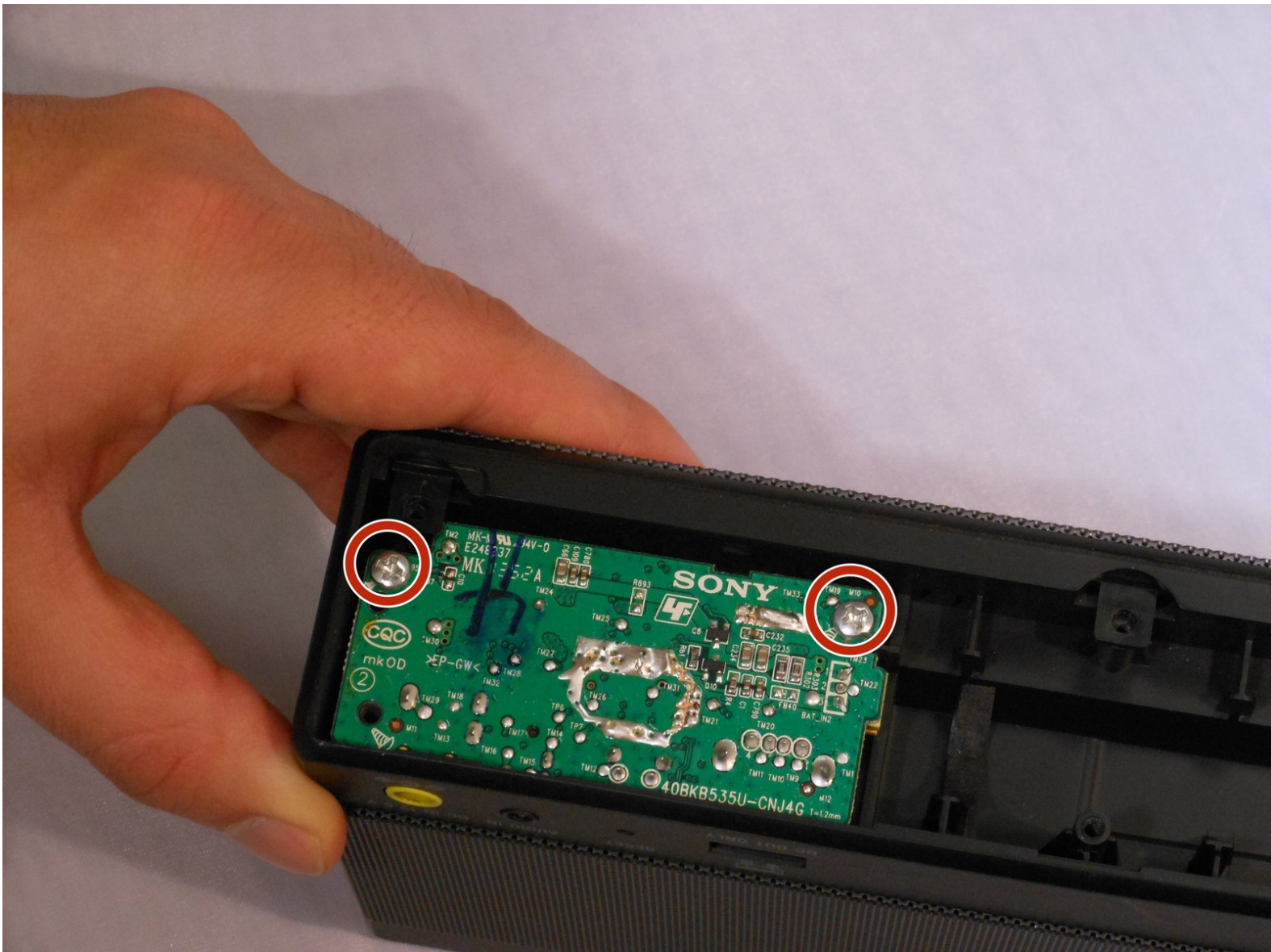




Sony SRS-X5 USB/AUX plug in Replacement

Having trouble with the USB/AUX? It may be time to replace that part.

Written By: Jeffrey Yalung



INTRODUCTION

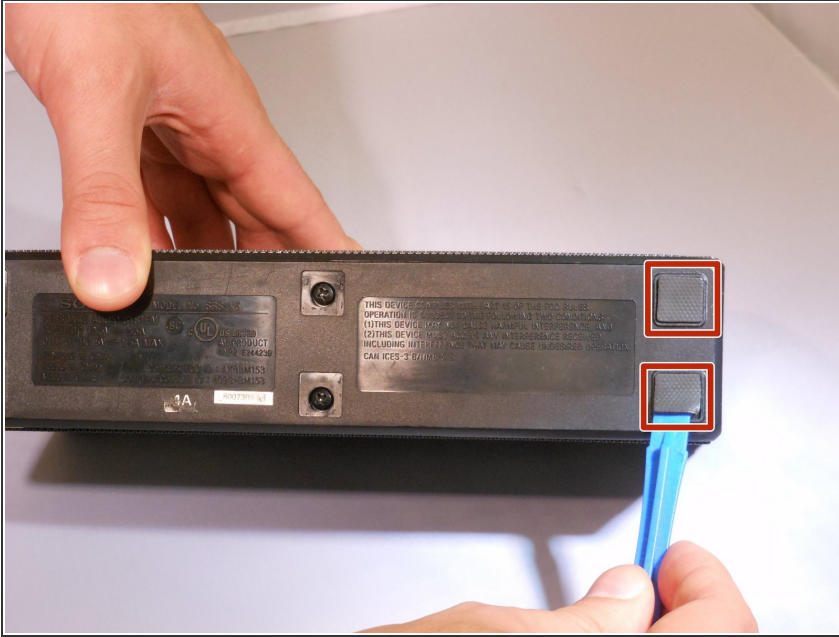
This guide demonstrates how to replace the USB/AUX board.




TOOLS:

- [Phillips #1 Screwdriver](#) (1)
 - [iFixit Opening Tools](#) (1)
-

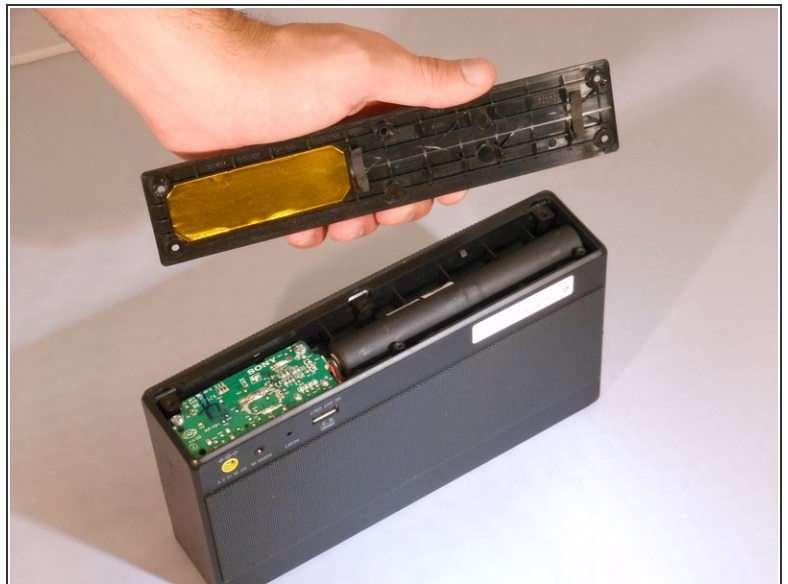
Step 1 — Battery



- Remove the pads on the bottom of the speaker using the blue plastic opening tool to reveal the screws underneath.

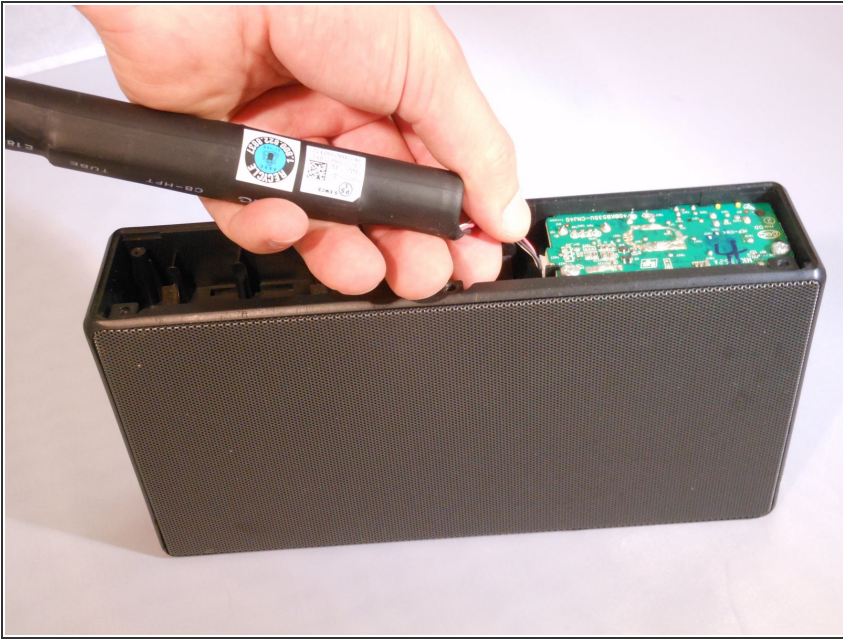
 Make sure the speaker is unplugged and powered down before doing any work on the device.

Step 2



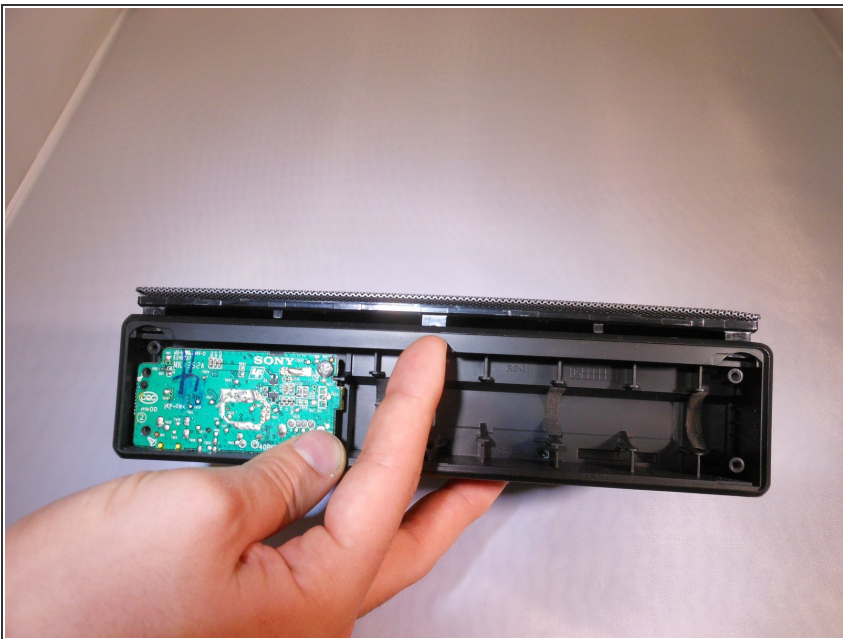
- Unscrew the six 6mm screws with a Phillips head #1 screwdriver.
- Remove the bottom panel of the speaker.

Step 3



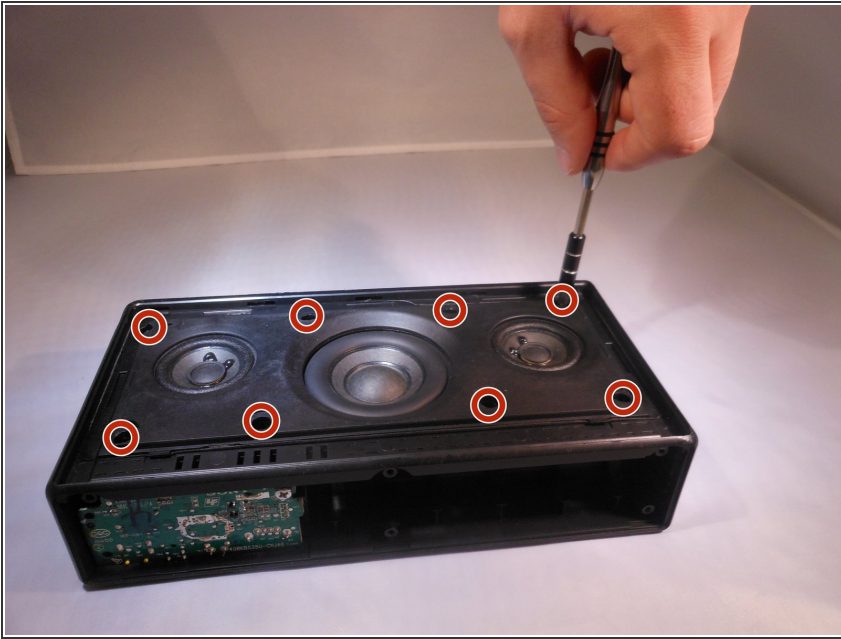
- Unplug the battery by gently pinching the plastic end connected to the smaller board and pull away.
- Remove the battery.

Step 4 — Speaker



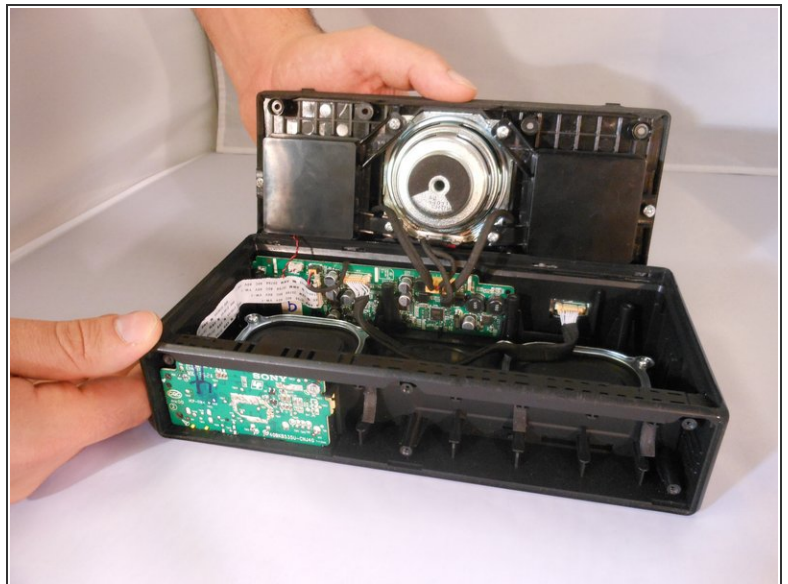
- Remove the lower frame by pushing the middle plastic tab upward.

Step 5



- Remove the eight 0.5mm Phillips #1 screws from the speaker panel.

Step 6



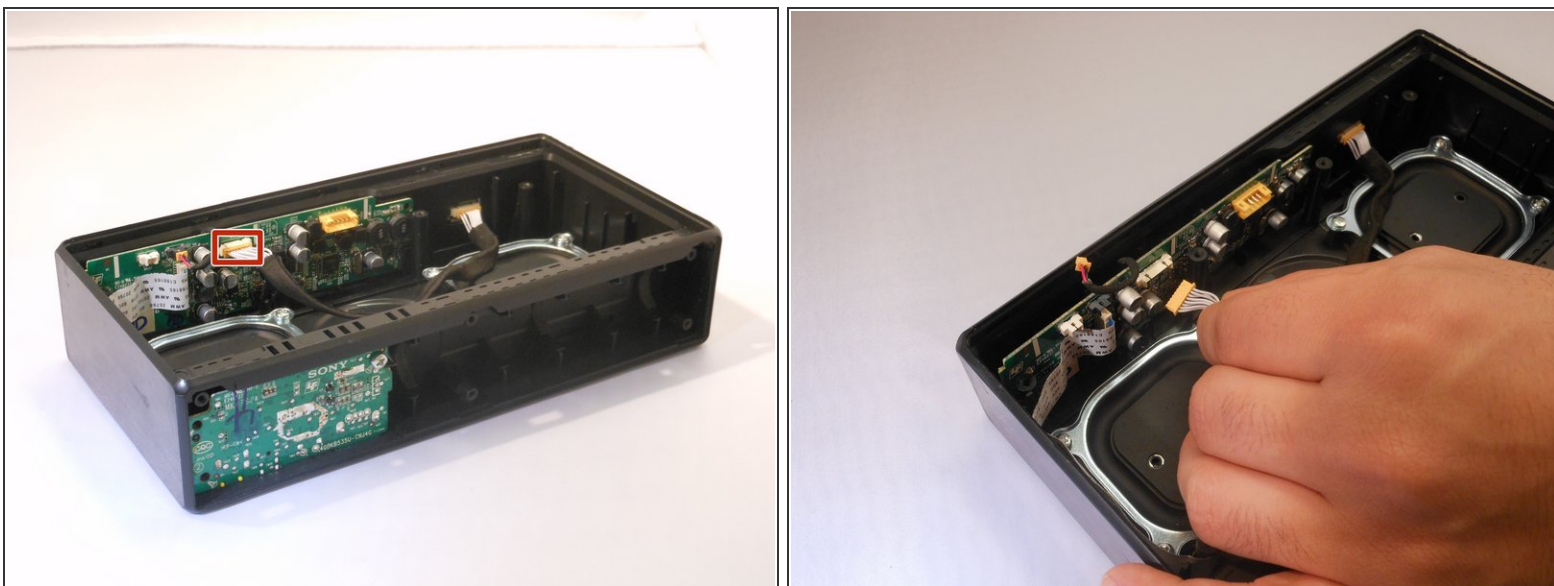
- Using the plastic opening tool, flip open the speaker panel.

Step 7



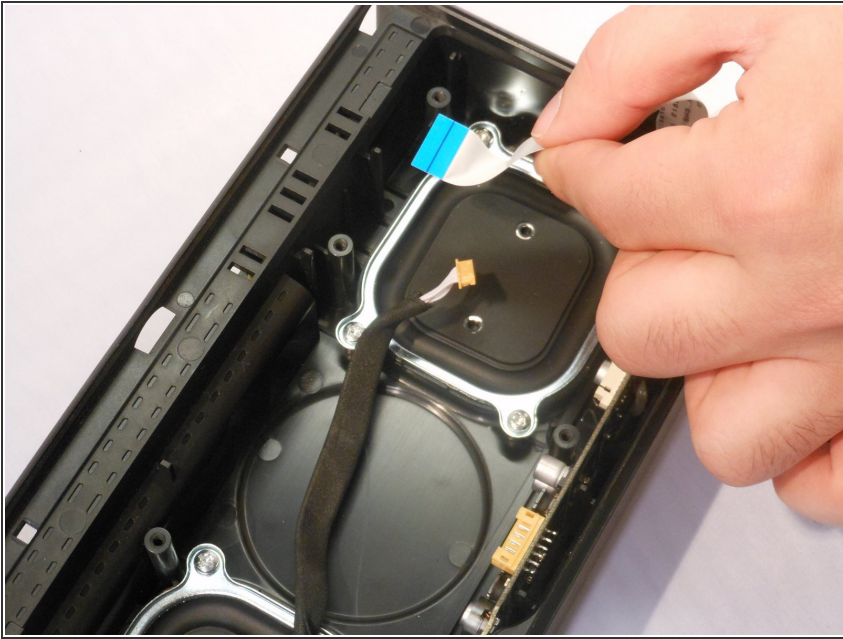
- Unplug the two cables connecting the speaker to the motherboard by squeezing the sides of the plastic ends.

Step 8 — Bluetooth



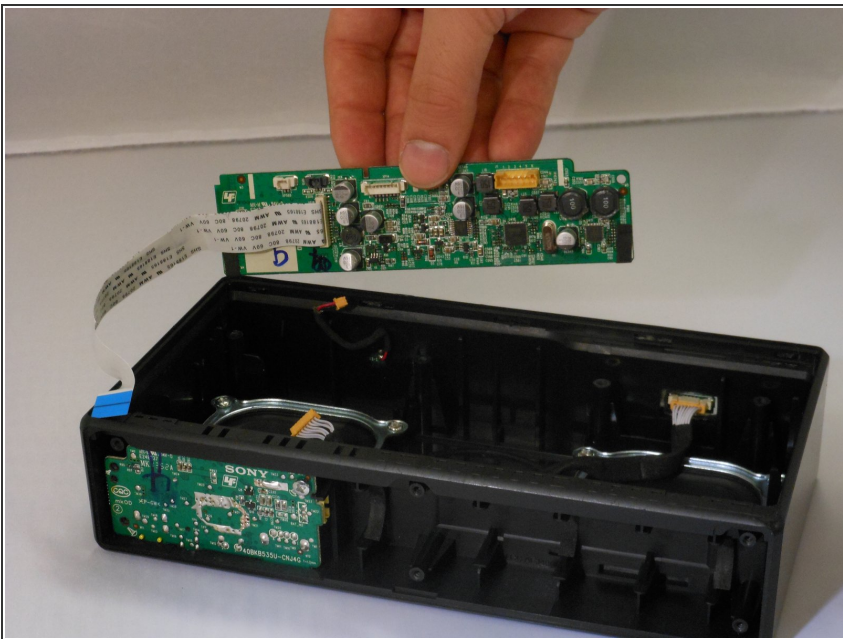
- Unplug the cord connected to the motherboard by squeezing the plastic sides.

Step 9



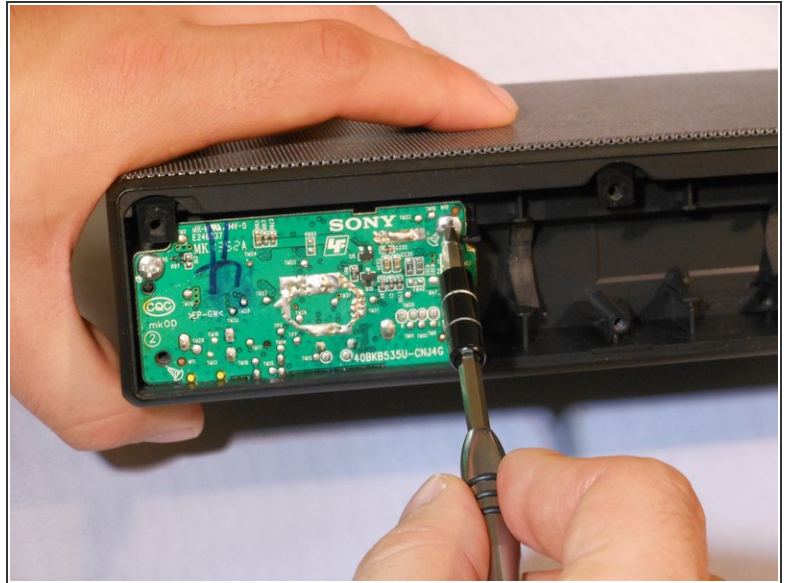
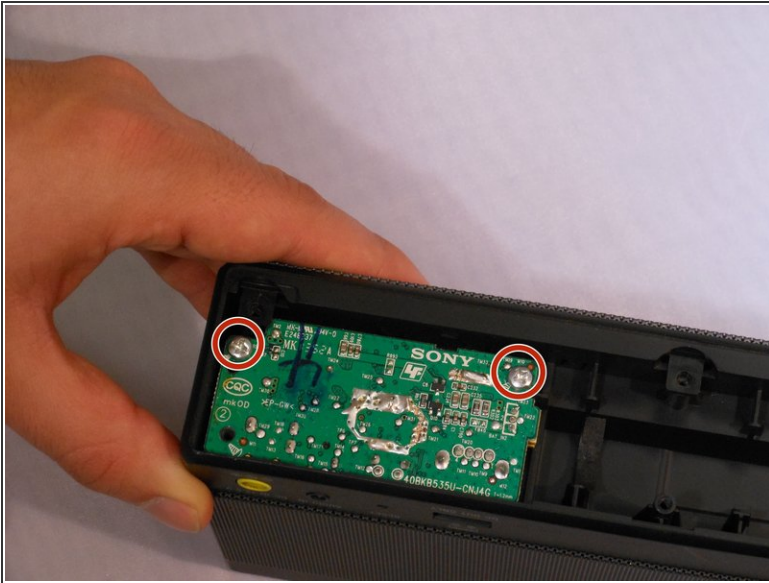
- Gently tug on the plastic ribbon connected to the bottom side of the speaker to unplug it.

Step 10



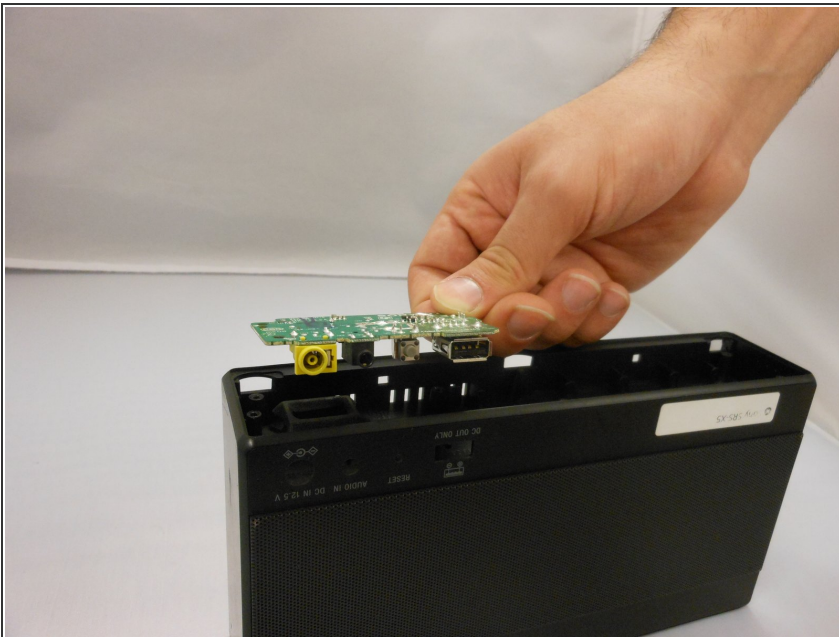
- Remove the motherboard.

Step 11 — USB/AUX plug in



- Using the Phillips #1 screwdriver, remove the two 6mm screws holding the AUX board in place.

Step 12



- Remove the aux board. Be careful as the board might need some wiggling to get out.

To reassemble your device, follow these instructions in reverse order.