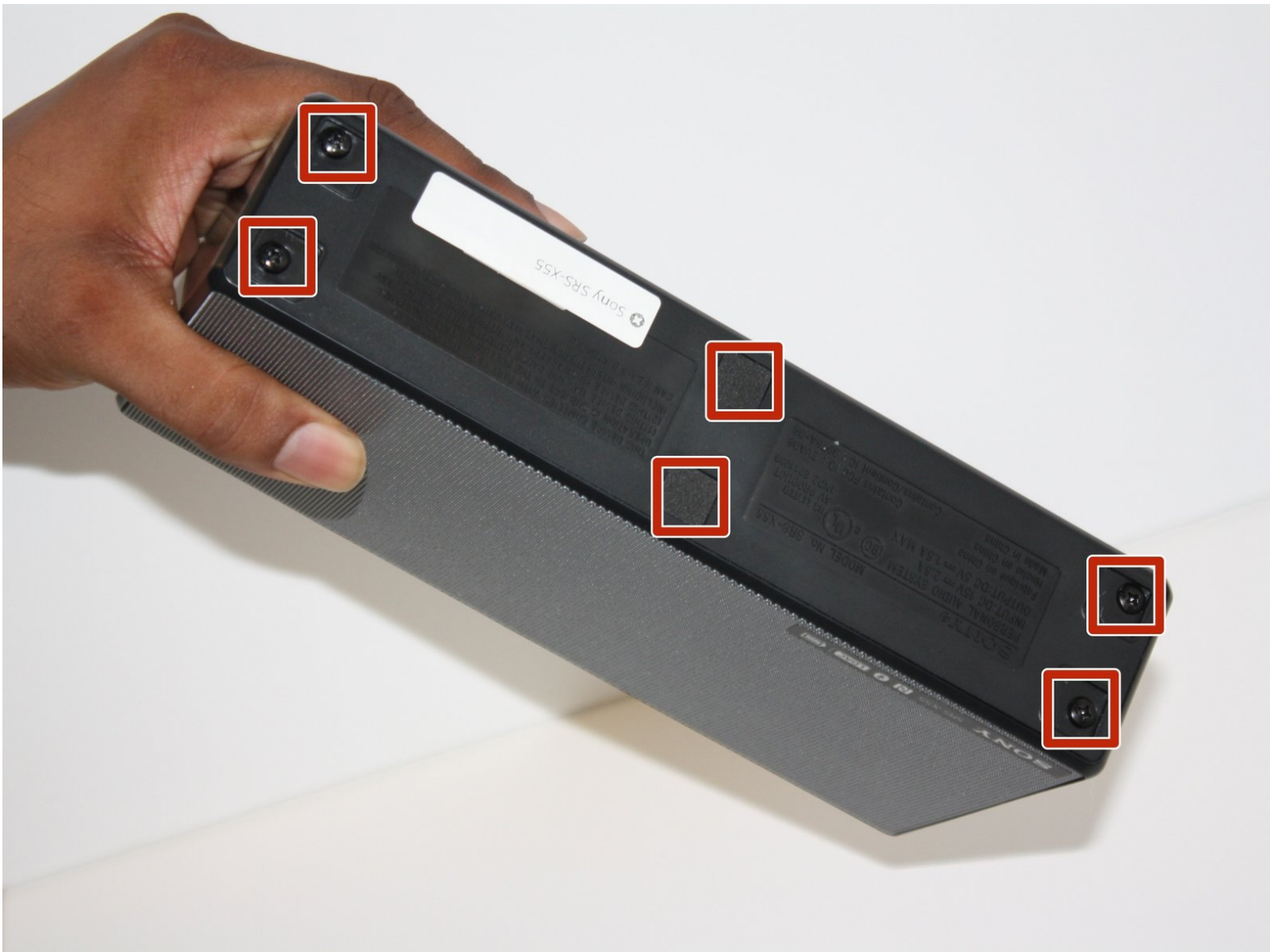




# Sony SRS-X55 Battery Replacement

Replace the battery of your Sony SRS-X55 speaker.

Written By: Bradley Conner



---

## INTRODUCTION

Use this guide to replace the battery of your Sony SRS-X55 speaker.

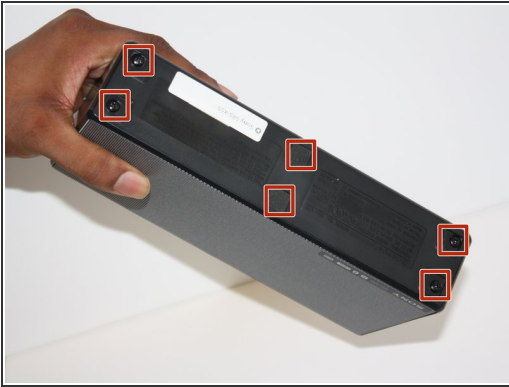
---



### TOOLS:

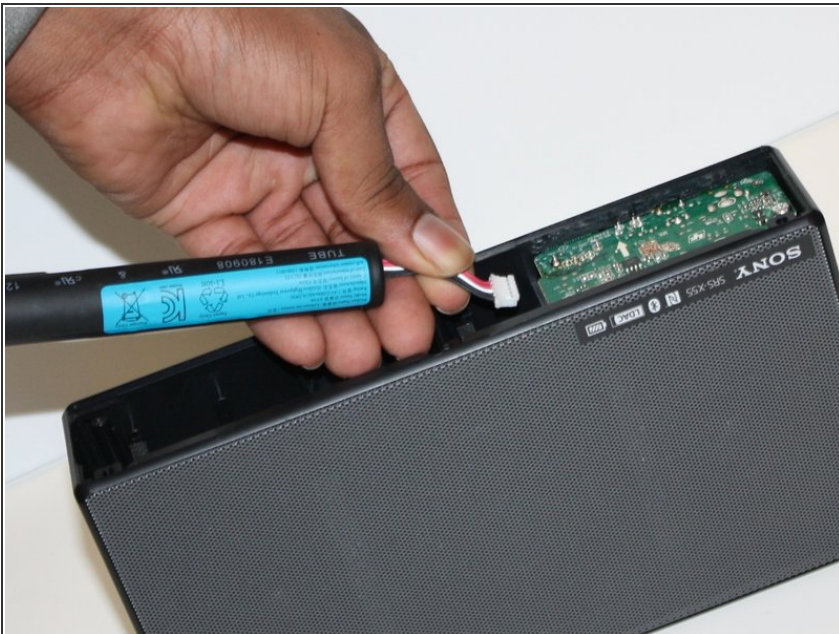
- [Phillips #1 Screwdriver](#) (1)
  - [Spudger](#) (1)
-

## Step 1 — Battery



- Remove the six screw covers with a spudger.
- Remove the six 11 mm Phillips screws from the bottom panel.
- Remove the bottom panel of the speaker.

## Step 2



- Disconnect the battery cable from the motherboard.
- Remove the battery.

To reassemble your device, follow these instructions in reverse order.