



Sony SRS-X55 Input Board Replacement

This replacement guide demonstrates how to remove and replace the input board for the Sony SRS-X55 portable speaker.

Written By: Chris Sparzo



INTRODUCTION

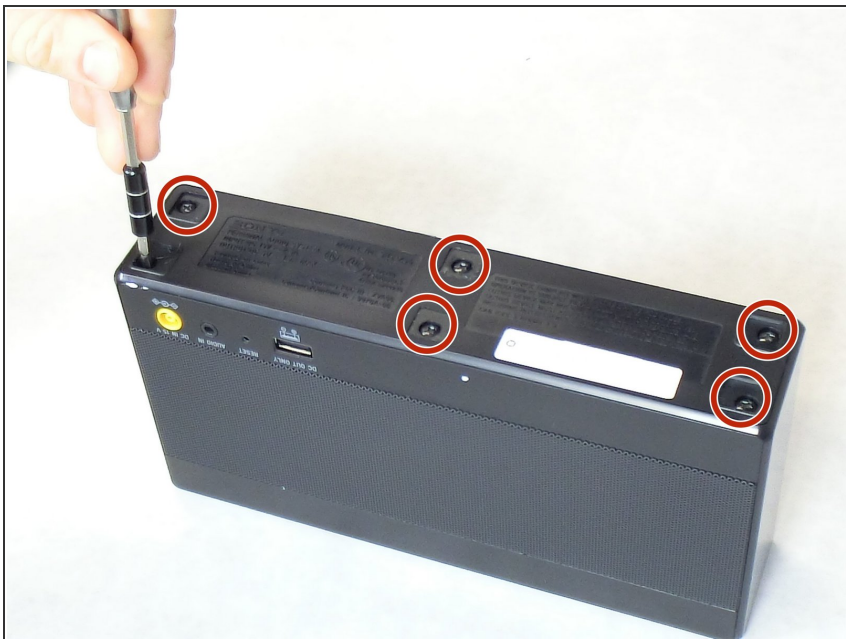
This guide is a walk through for how to remove and replace the input board for the Sony SRS-X55 speaker.



TOOLS:

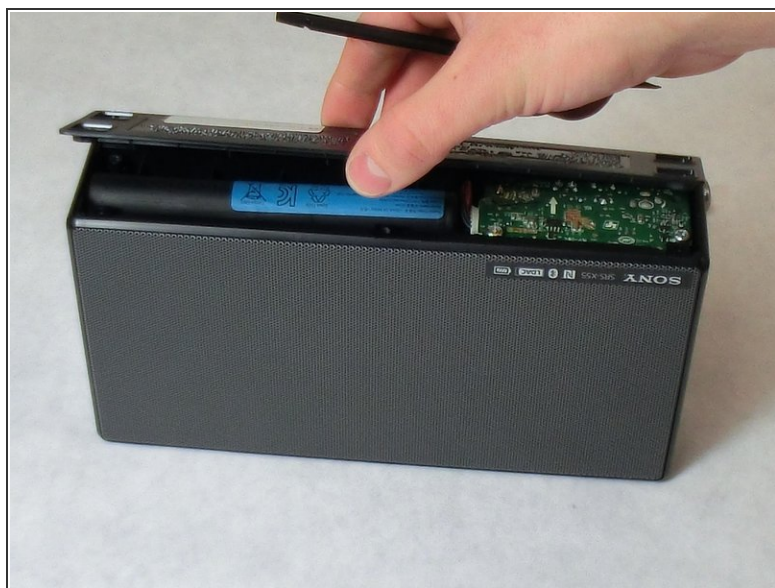
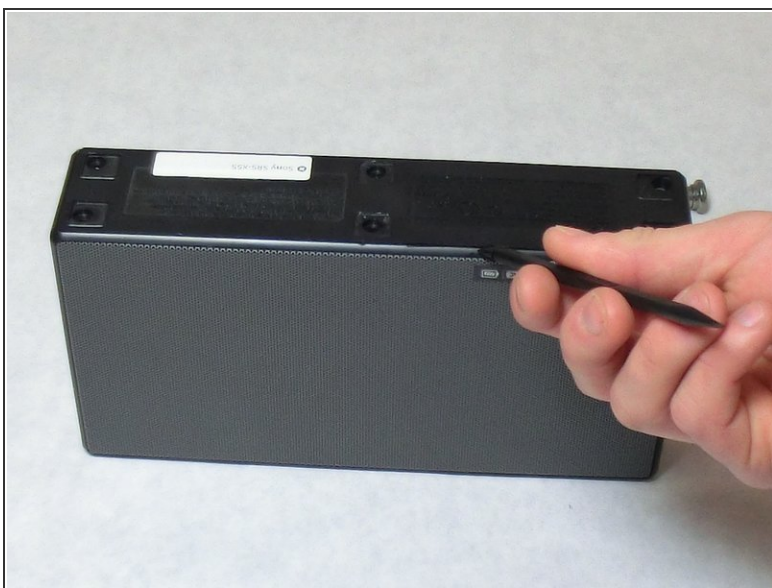
- [Phillips #2 Screwdriver](#) (1)
 - [Spudger](#) (1)
-

Step 1 — Input Board



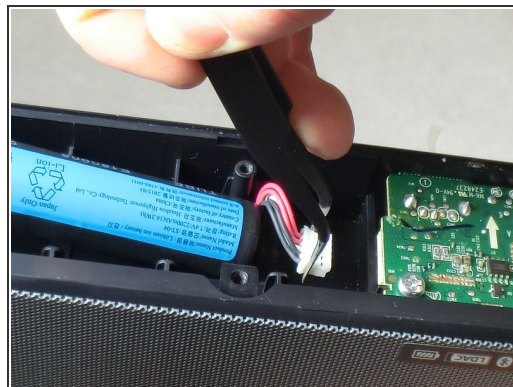
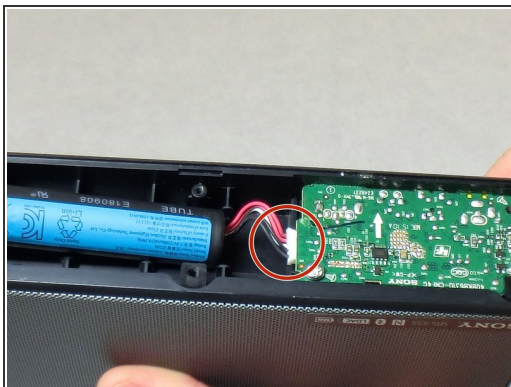
- Locate the six 9 mm screws on the bottom of the SRS-X55 and remove them using a Phillips head #2 screwdriver.

Step 2



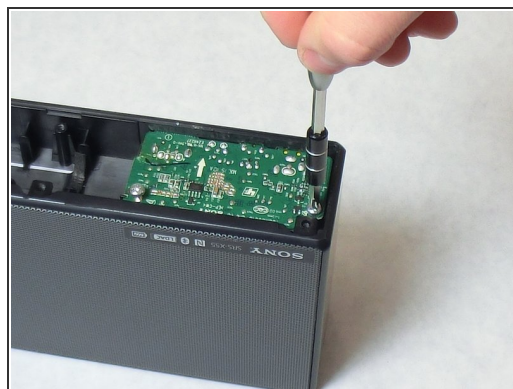
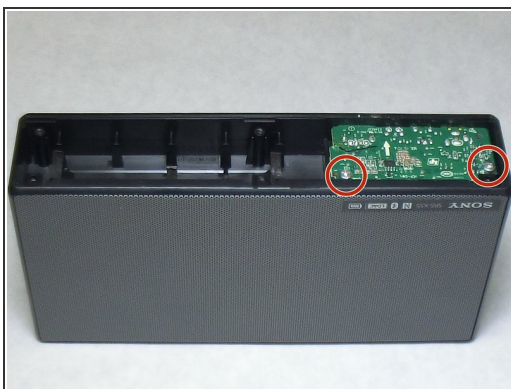
- Insert a plastic spudger at the seam of the bottom panel and remove it from the rest of the speaker.

Step 3



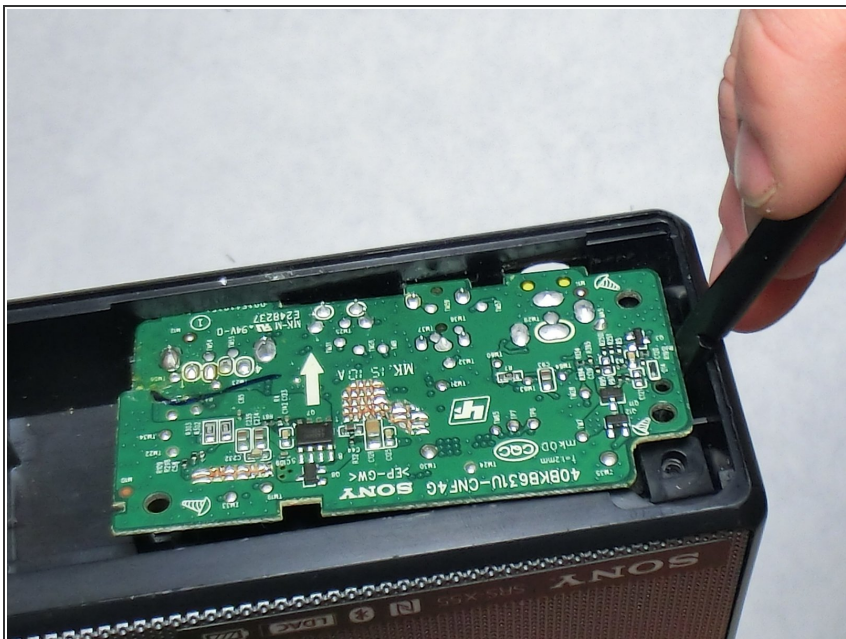
- Locate the battery plug and remove it using a pair of tweezers.

Step 4



- Locate the two 3.5 mm screws on the bottom of the I/O board and remove them using a Phillips head #2 screwdriver.

Step 5



- Use a plastic spudger to remove the I/O board from the speaker body.

Step 6



- Insert a plastic spudger into the seam of the metal speaker cover and pry it downward until it releases from the speaker body.

Step 7



- Locate the eight 8.9 mm screws on the face of the speaker assembly and remove them using a Phillips head #2 screwdriver.

Step 8



- Insert a plastic spudger underneath one of the tabs located on the front of the speaker assembly and gently raise the speaker assembly above the rest of the speaker.

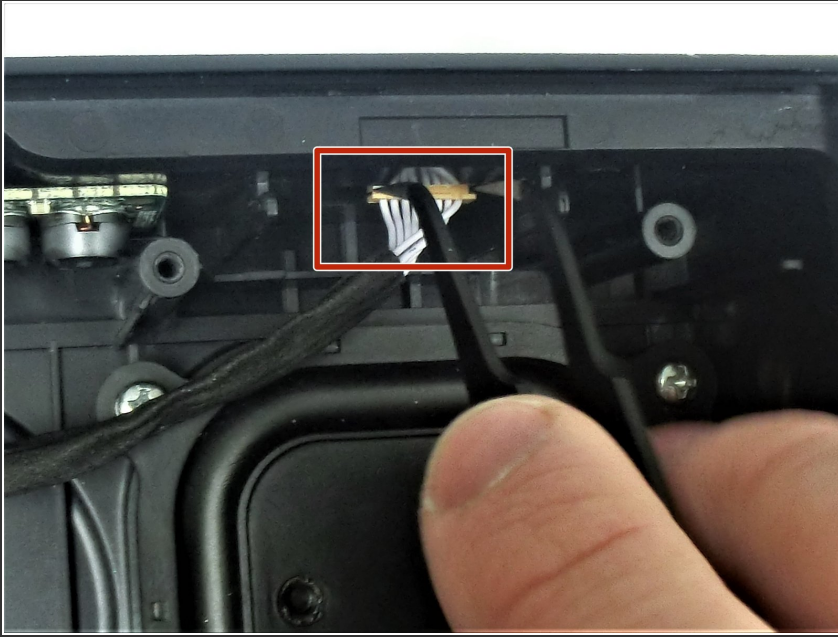
⚠ Continue to the next step before attempting to lift the speaker assembly from the rest of the speaker entirely to avoid damaging internal wires.

Step 9



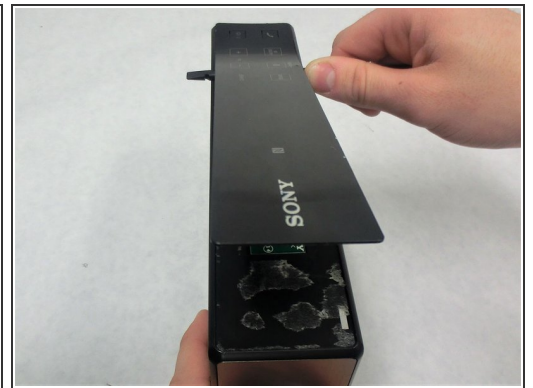
- Locate the two wire connections as shown underneath of the speaker assembly and unplug them using a pair of tweezers.

Step 10



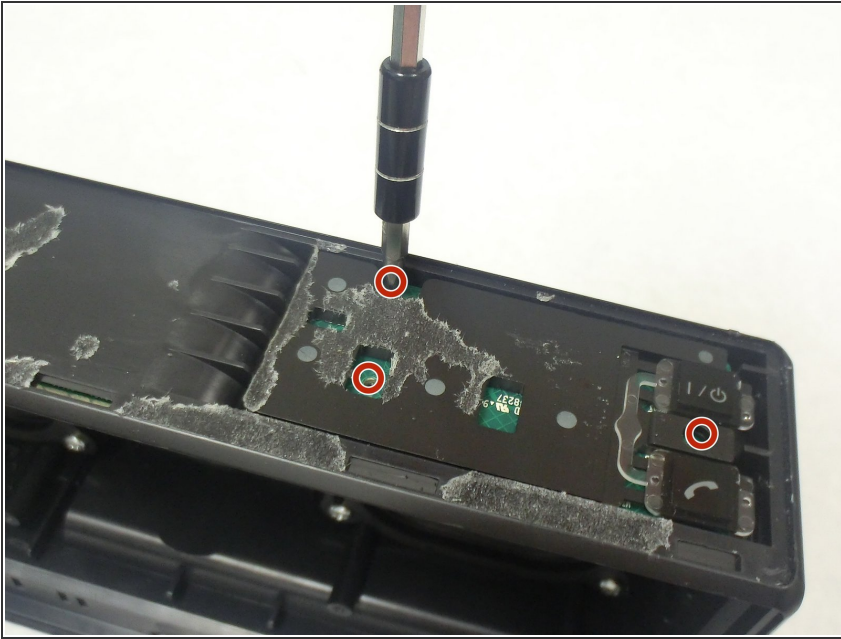
- Locate the wire connecting the motherboard and the input board under the top panel of the speaker and remove it using a pair of tweezers.

Step 11



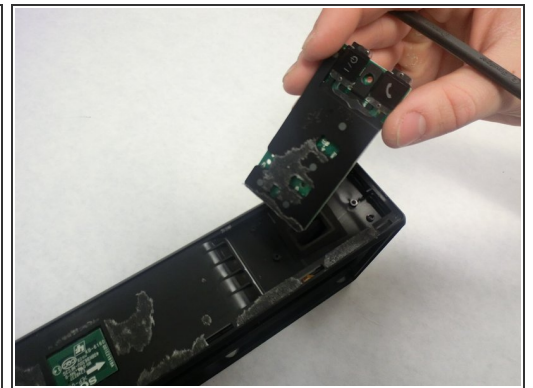
- Insert a plastic spudger into the seam at the edge of the top panel and gently pry it away from the rest of the speaker.
- The spudger can be inserted laterally into the opening created by the spudger and slid along the top as shown to remove the panel in a single motion.

Step 12



- Locate the three 4.5 mm screws on top of the speaker input board and remove them using a Phillips head #2 screwdriver.

Step 13



- Insert a plastic spudger underneath the edge of the input board and gently pry it away from the rest of the speaker.

To reassemble your device, follow these instructions in reverse order.