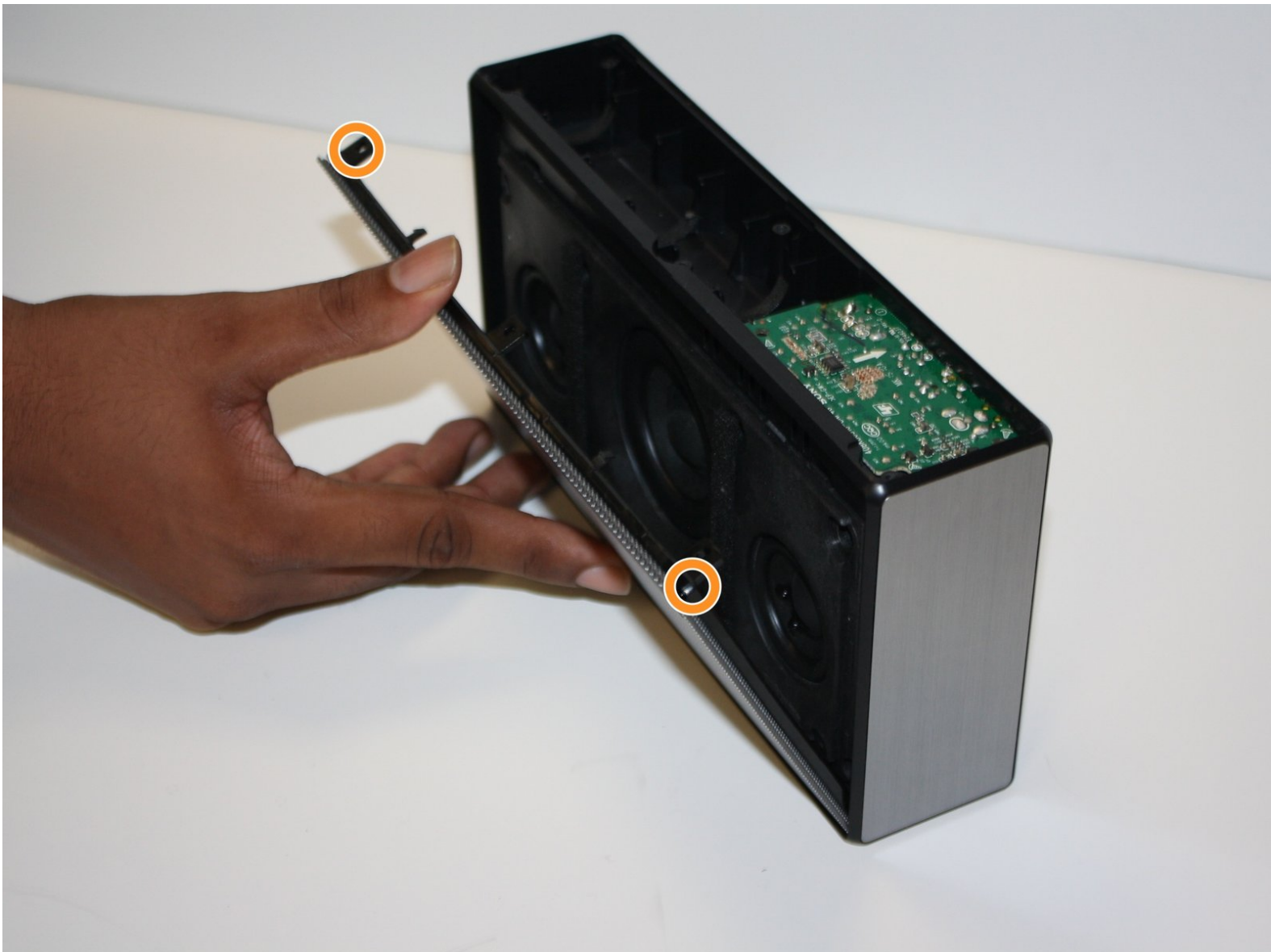




Sony SRS-X55 Speaker Panel Replacement

Replace the speaker grill or speaker panel of your Sony SRS-X55 speaker.

Written By: Jordon McDuffie



INTRODUCTION

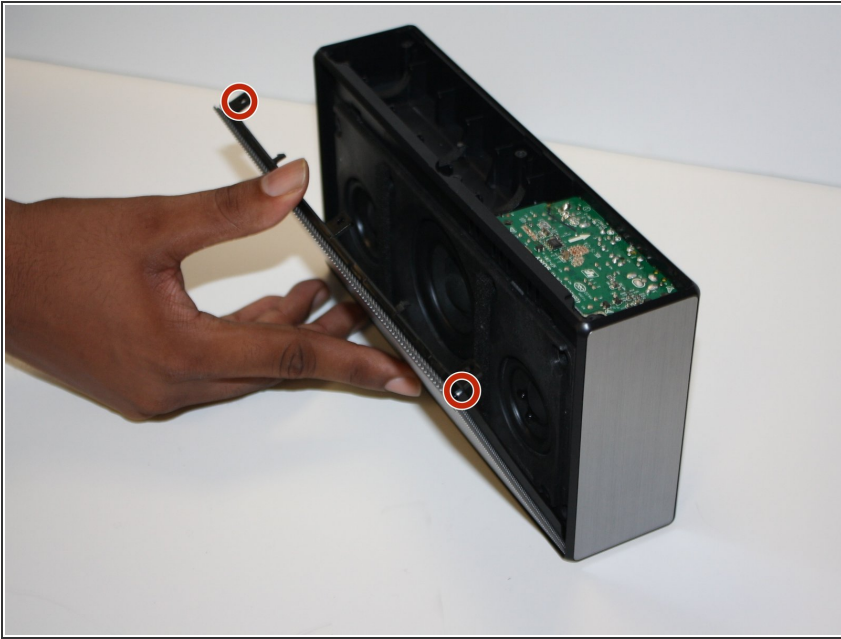
Use this guide to Replace the speaker grill or speaker panel of the Sony SRS-X55.



TOOLS:

- [Phillips #1 Screwdriver](#) (1)
-

Step 1 — Speaker Panel



- Remove the speaker grill by pushing on the two tabs in the corners.

Step 2



- Remove the eight 0.5mm Phillips #1 screws from the speaker panel.

To reassemble your device, follow these instructions in reverse order.