



Sony SRS-X55 Speaker Reverberator Replacement

This guide will show how to replace the speaker reverberators in the Sony SRS-X55.

Written By: Eric Coletto



INTRODUCTION

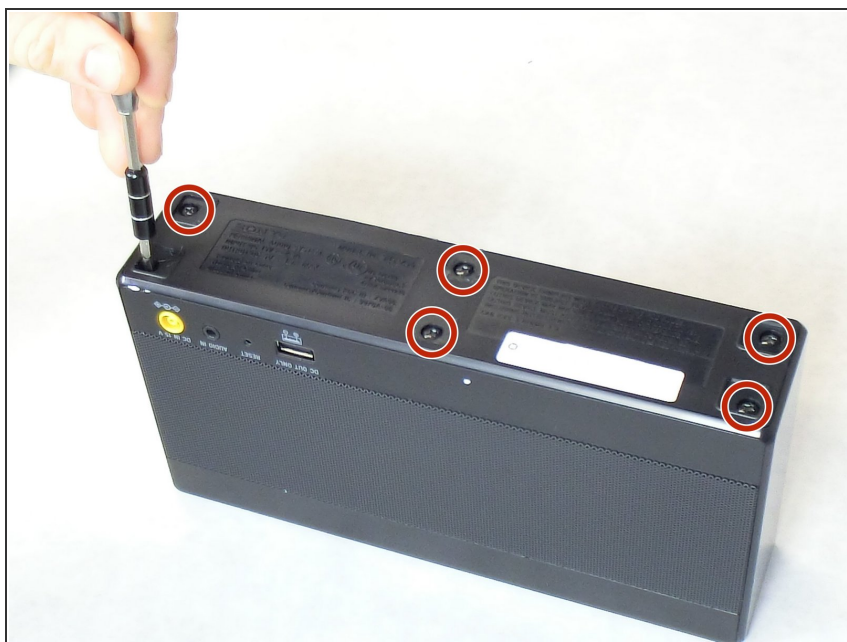
This Sony SRS-X55 has two speaker reverberators. This guide will walk you through the removal and replacement of them.



TOOLS:

- [Phillips #2 Screwdriver](#) (1)
 - [Spudger](#) (1)
 - [Tweezers](#) (1)
-

Step 1 — Speaker Reverberator



- Locate the six 9 mm screws on the bottom of the speaker and remove them using Phillips head #2.

Step 2



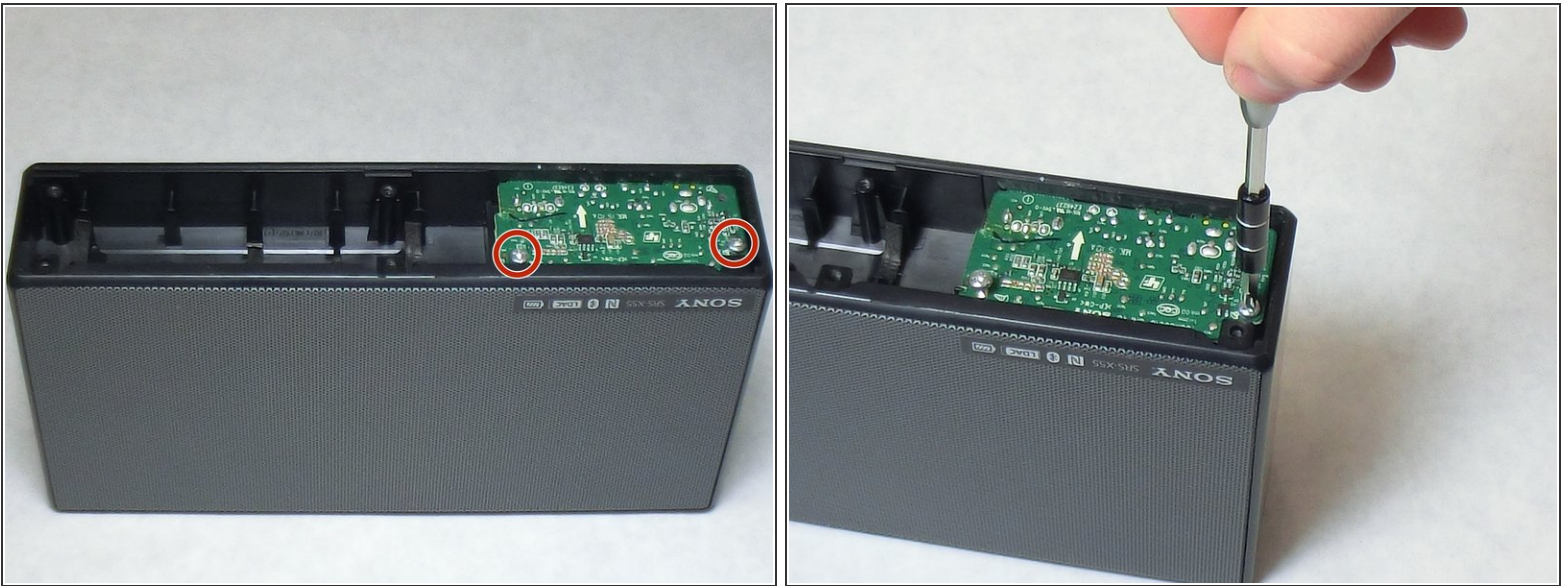
- Insert a plastic spudger into the seam on the bottom panel and lift it away from the rest of the speaker.

Step 3



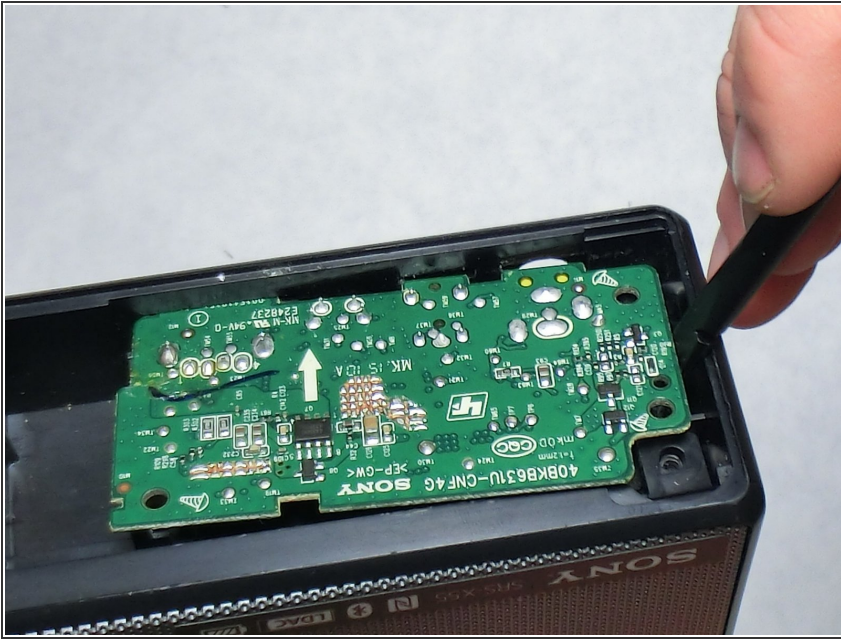
- Locate the battery connection and unplug it using a pair of metal tweezers.

Step 4



- Locate the remaining two 3.5 mm screws on the bottom of the I/O board and remove them using a Phillips head #2 screwdriver.

Step 5



- Remove the I/O board from the rest of the speaker. A plastic spudger can aid in this process if it is inserted into the edge as shown and gently pried.

Step 6



- Insert a plastic spudger into the seam where the forward facing metal speaker cover meets the speaker body and gently pry it upward until it releases.

Step 7




- Locate the eight 8.9 mm screws on the face of the speaker assembly and remove them using a Phillips head #2 screwdriver.

Step 8



- Insert a plastic spudger underneath one of the tabs on the front of the speaker assembly and gently raise it.

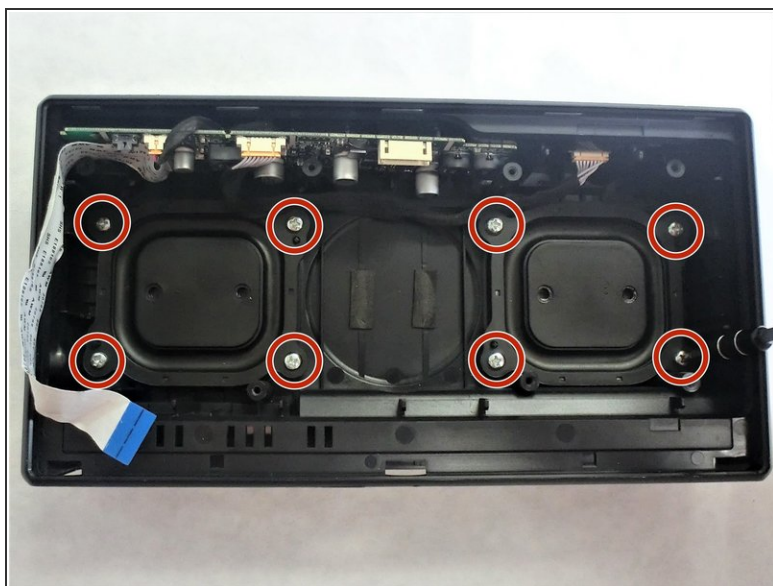
 Continue to the next step before attempting to lift the speaker assembly entirely away from the rest of the speaker to avoid damaging internal wire connections.

Step 9



- Locate the two wire connections as shown underneath of the speaker assembly and unplug them using a pair of tweezers.
- Lift the speaker assembly away.

Step 10



- Locate the eight 7.5 mm screws across both of the speaker reverberators and remove them using a Phillips head #2 screwdriver.
- Lift the speaker reverberators away and replace them.

To reassemble your device, follow these instructions in reverse order.