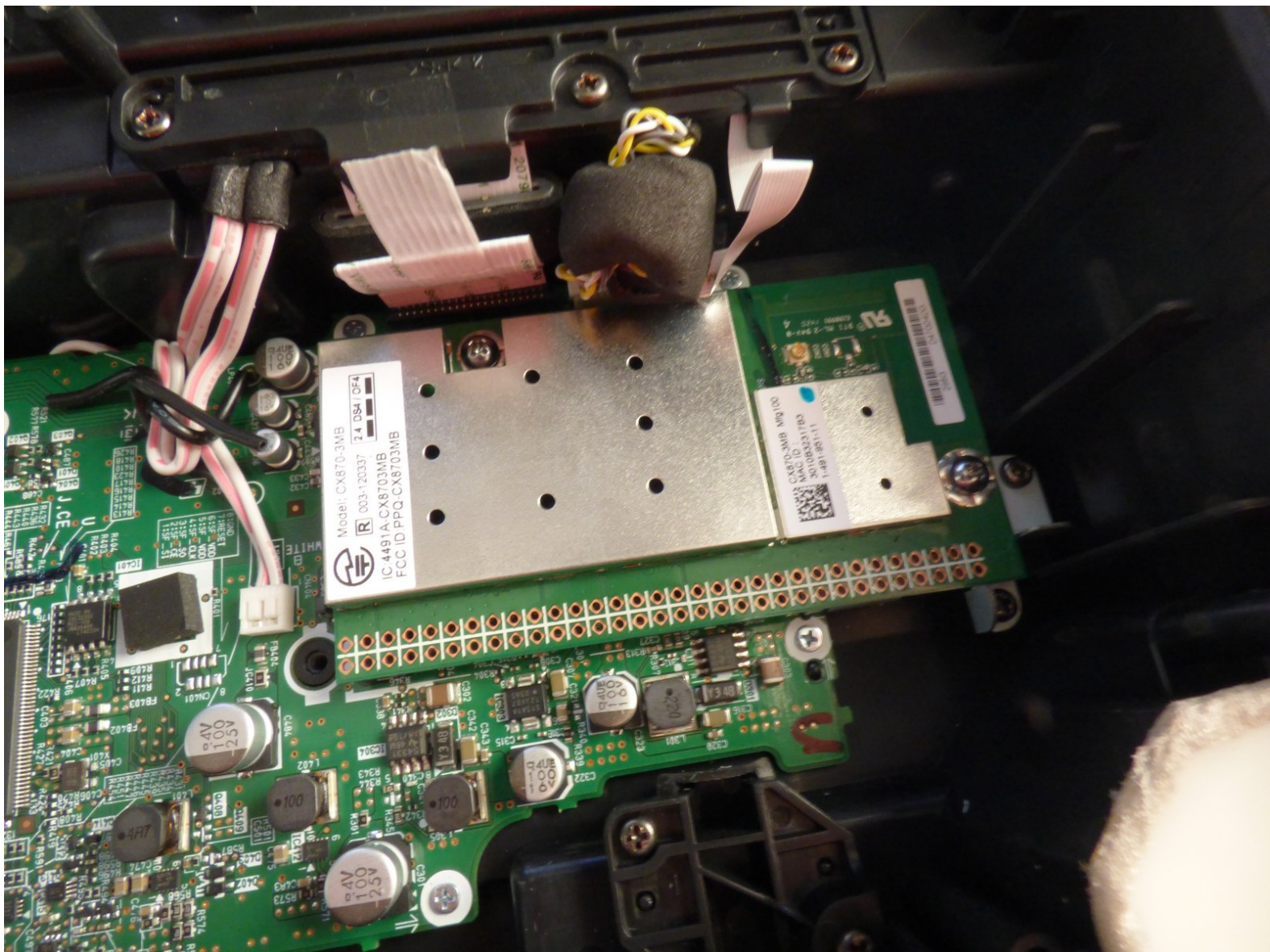




# Sony SRS-X7 AM/FM Chip Replacement

Follow this guide to replace the AM/FM chip in your device.

Written By: Tyler Lamar



## INTRODUCTION

Use this guide to replace the AM/FM chip, and follow it in reverse order to reinstall the new chip.

The AM/FM chip is necessary in order to be able to use the radio feature on your device,



### TOOLS:

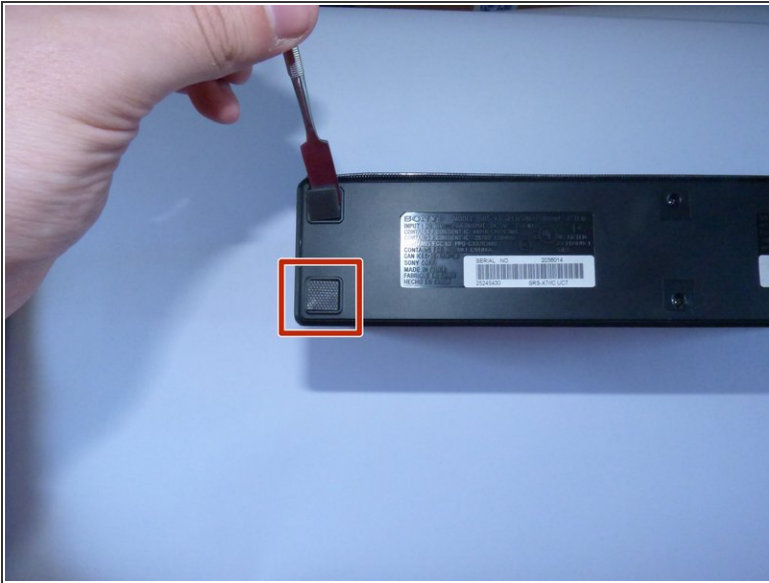
- [Pro Tech Toolkit](#) (1)



### PARTS:

- [Sony SRS-X7 AM/FM Chip](#) (1)


## Step 1 — Sony SRS-X7 Faceplate Disassembly




- On the bottom of the device, you'll see 4 rubber pieces at the corners. Peel off these rubber pieces.
- Unscrew the 4 10mm Philips J1 screws beneath them.

## Step 2

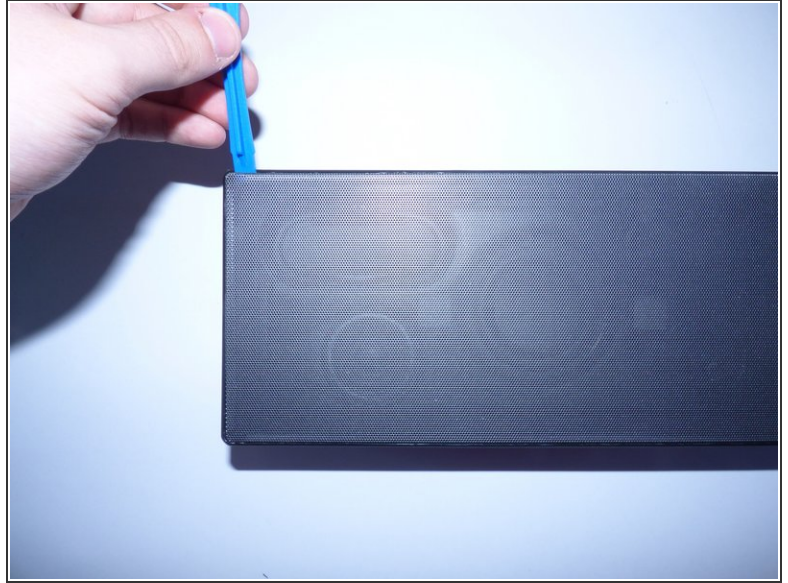
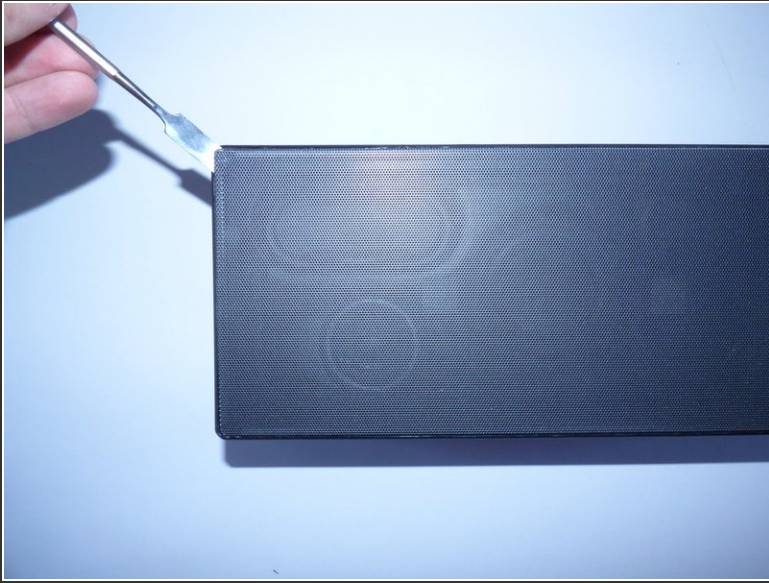


 The black stickers between the 4 foam pieces are there to protect the unit's warranty. If you try to send the device back to Sony after poking through said stickers, they will not accept it as the device has been tampered with.

- Poke through said stickers and unscrew the 2 10mm Philips J1 screws beneath those.
  - Insert the blue plastic tool into the corner of the bottom faceplate and slide along the edge.
-  It will be a bit difficult as there is adhesive holding the faceplate to the unit, but with a bit of playing it should come off with ease.



### Step 3



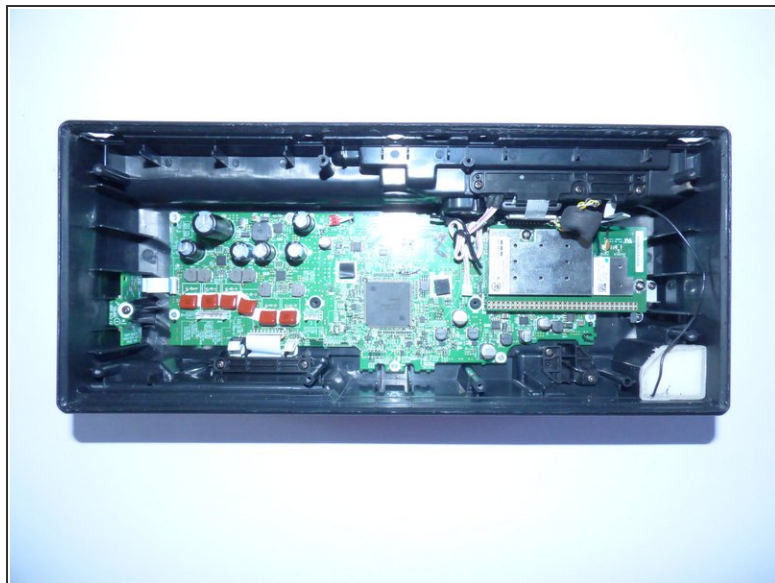
- Using a metal spudger, insert it into one of the corners or sides of the unit's faceplate and lightly pry open.
- While pried, insert a plastic opening tool and slide along the edges of the unit.
- Repeat the last step on each side of the unit's faceplate, until the faceplate is off.
- ⓘ The first time you attempt to take the faceplate off of the speaker, it will be difficult because there is adhesive holding it to the unit. After this time, disassembly and reassembly should be easier.

## Step 4



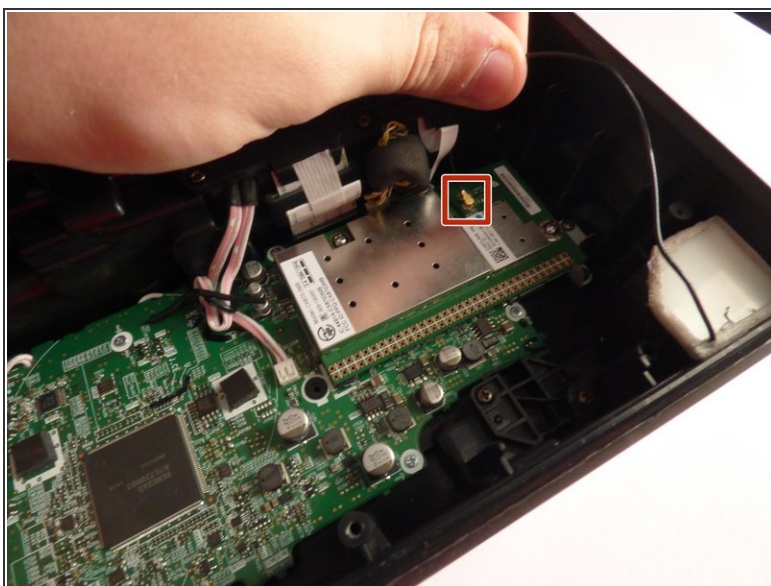
- With the faceplate now off, the speakers should be revealed. There should be 8 visible screws around the border of the speakers. Remove the 8 10mm Philips J1 screws.
- Take the 2 20mm Philips J1 screws out of the middle of the speaker as shown.

## Step 5



- i** The speaker should come out of the unit with ease, however you should use caution as it is still connected to the motherboard.
- Take the whole speaker out, and disconnect the connectors from the motherboard by lightly pulling on them.

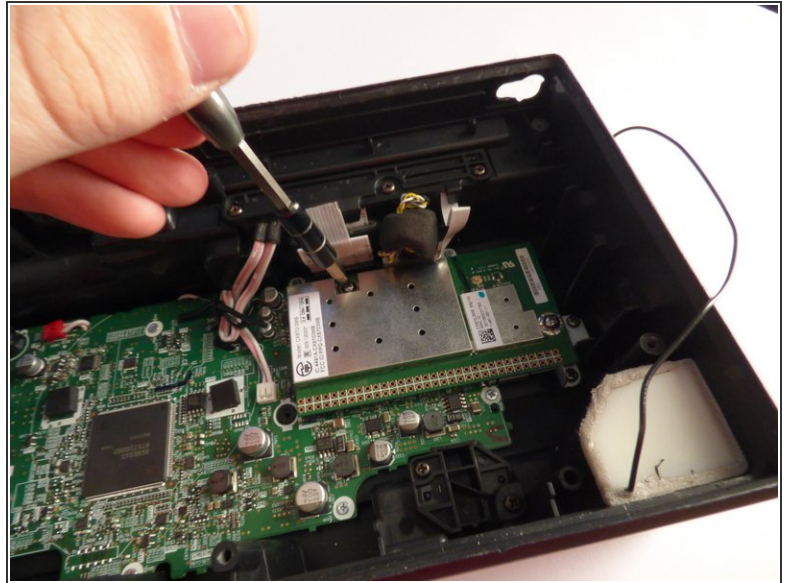
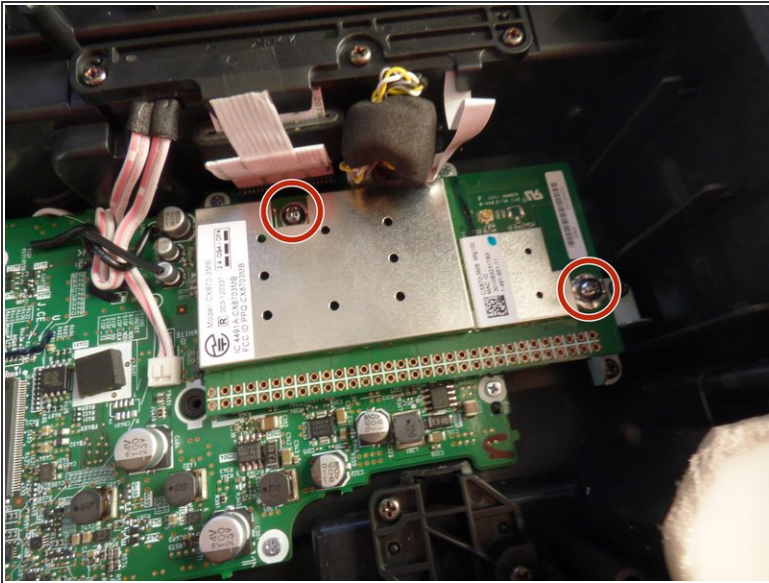
## Step 6 — AM/FM Chip



- Using your fingers, unplug the gold connector from the AM/FM chip.

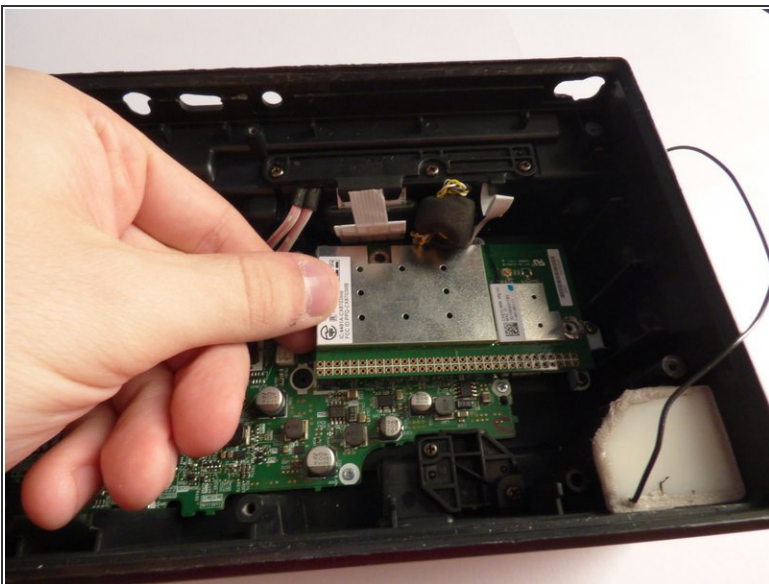


## Step 7



- Remove the two Philips J1 10mm screws from the top side and right side of the AM/FM chip.

## Step 8



- Gently with your fingers, or a plastic grasping tool, remove the chip from the unit.