



# Sony SRS-XB30 Battery Replacement

This guide will assist you in properly opening your speaker to reveal/replace its internal components.

Written By: Star Dragon



---

## INTRODUCTION

This Audio System is the model SRS-XB30. Common malfunctions of this Audio System include its failing speakers, charging incapability, and Bluetooth pairing impairment.

---

### TOOLS:

- [Metal Spudger](#) (1)
  - [Phillips #1 Screwdriver](#) (1)
  - [T7 Torx Screwdriver](#) (1)
-

## Step 1 — Battery



- To remove the speaker grill, insert the big spudger underneath it in each corner.
- ⓘ Work around the edges to pry the grill up and off.

## Step 2



- With the Sony logo facing towards you, use the medium spudger to lift the side plates from the internal frame.

ⓘ This will need to be done on all four sides of the speaker to remove all four panels

⚠ This requires some effort because the adhesive is sticky.

This document was generated on 2019-12-31 02:34:39 PM (MST).

### Step 3



- Locate the four screws on the now exposed front panel.
- ⓘ Using the screwdriver with bit T7, unscrew each screw (15.0 mm long).

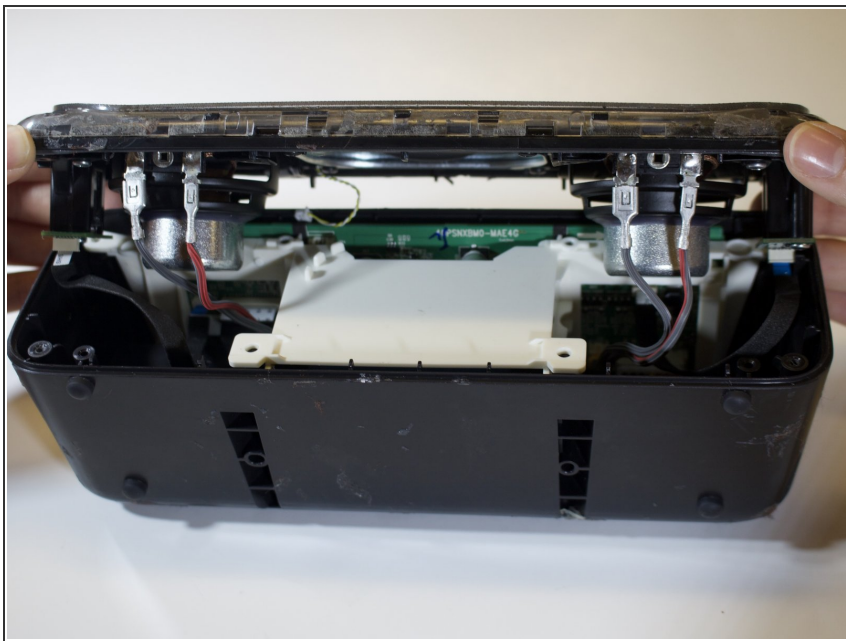
### Step 4



- Next, remove the four outer edge screws, located on each corner of the speaker. The outer edge of the speaker is a clear plastic.
- ⓘ Use the same T7 screwdriver head here.
- Remove each of the four corner screws (15.0 mm long).

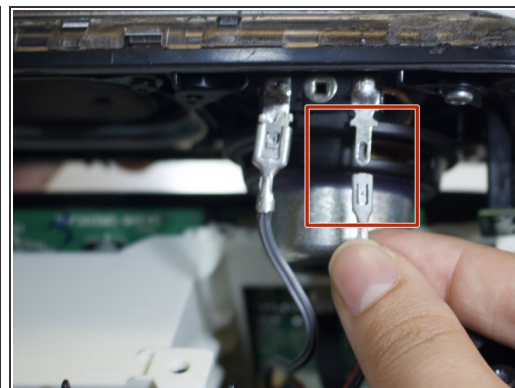
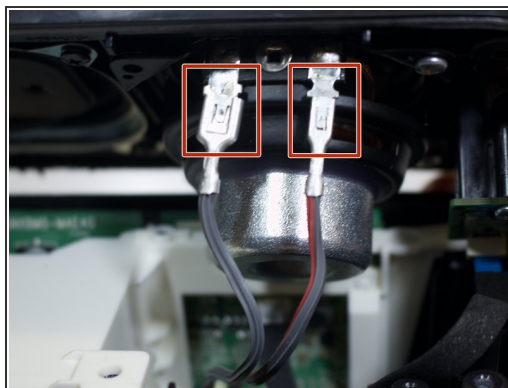
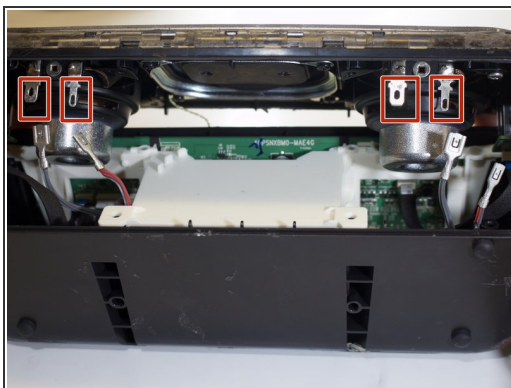


## Step 5



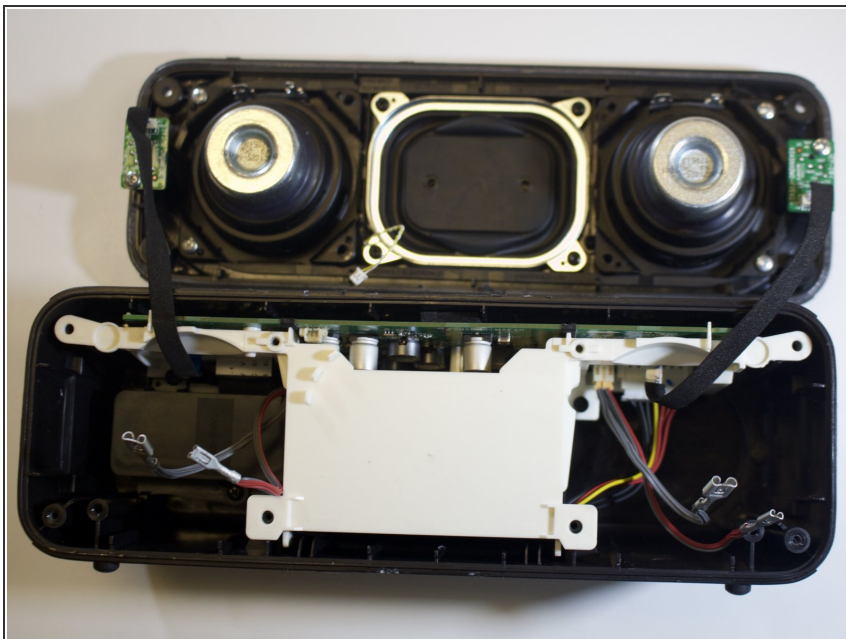
- With a little force, carefully lift the lid of the speaker.
- ⓘ Make sure that you do not pull on the wires.

## Step 6



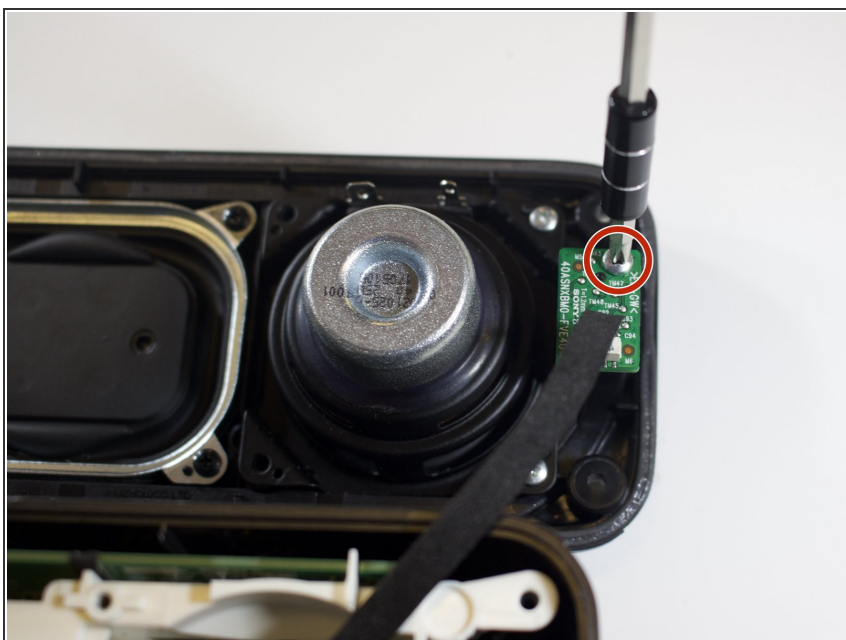
- Unclip the four wire connectors (that are attached to the speaker lid).
- Disconnect the thin yellow wire (attached to the speaker lid) from its port.

## Step 7



- Separate the speaker lid from the bottom frame.
- ① To prepare the speaker for the next step place the lid parallel to the frame.

## Step 8



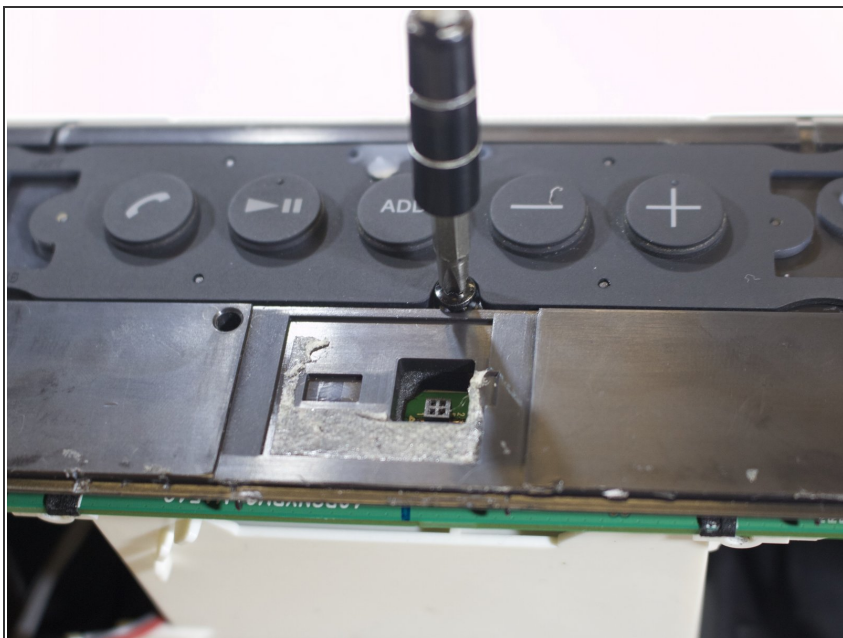
- Locate the two silver screws (9 mm) attached to the two LED-light-chips on the speaker lid.
- ① Using the screwdriver with bit PH1, unscrew each screw.

## Step 9



- Separate the speaker lid entirely from the bottom frame.

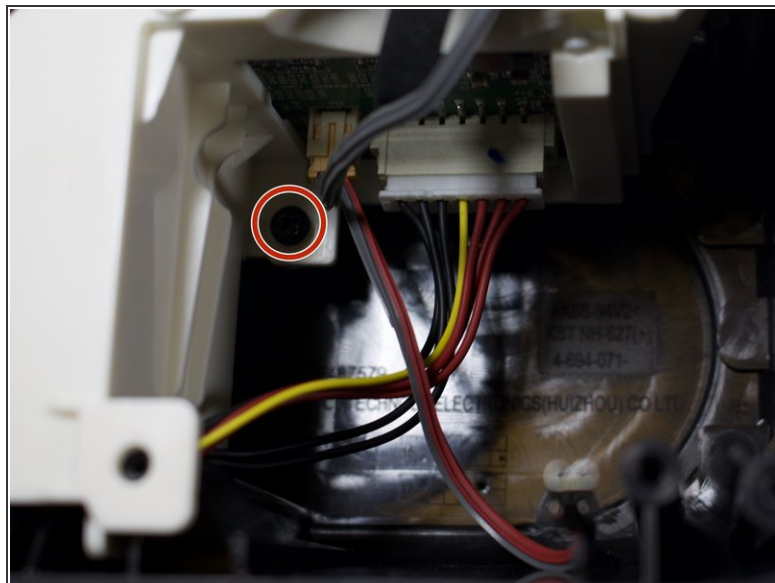
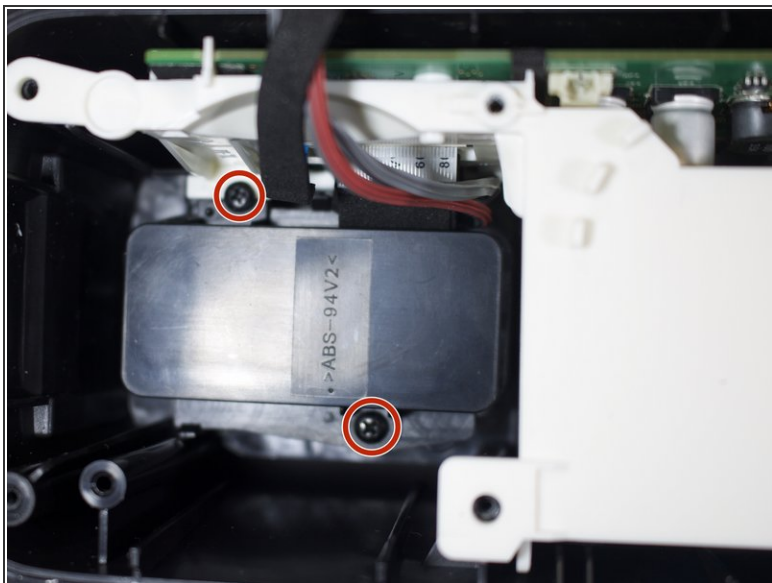
## Step 10



- Remove the top screw (10 mm).
- ① Use the screwdriver with bit T7.



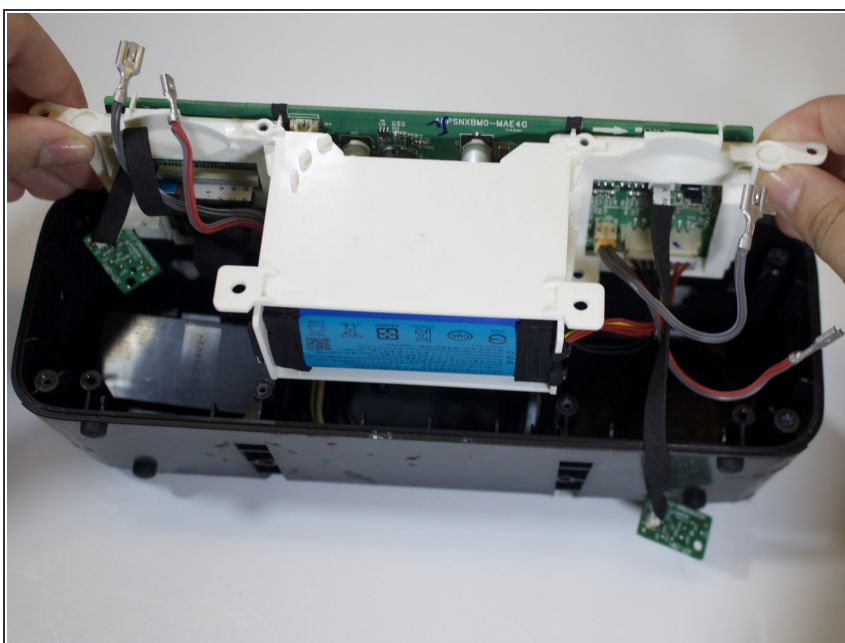
## Step 11



- Locate and remove the three black screws (10.0 mm) within the internal frame. Use bit T7.

**i** There are two screws on the left side of the white box and one to its right.

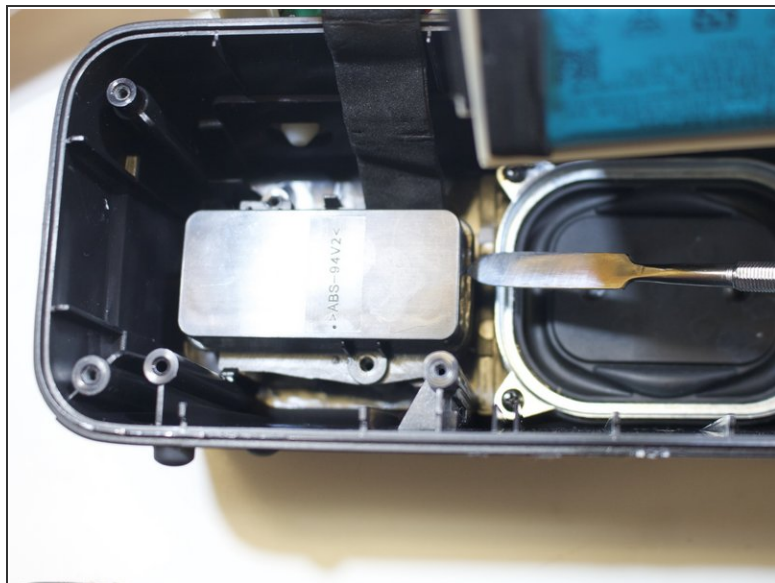
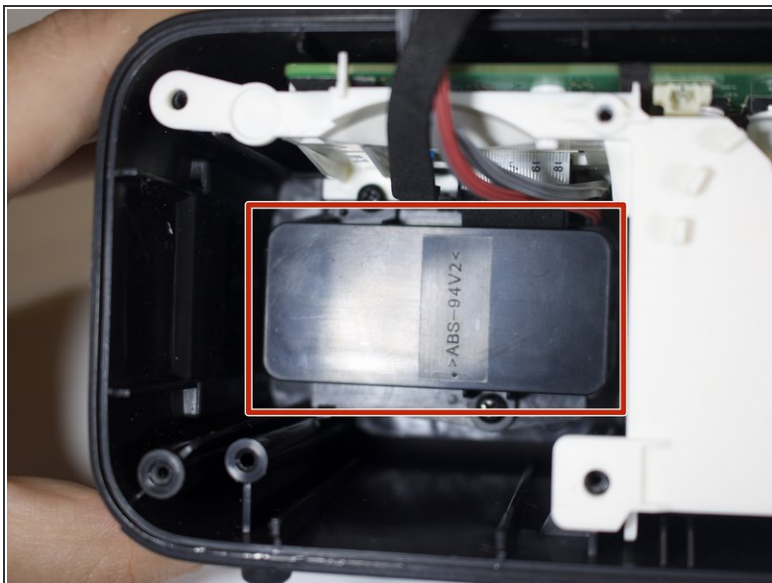
## Step 12



- Slightly lift the white box with all the wires still attached.

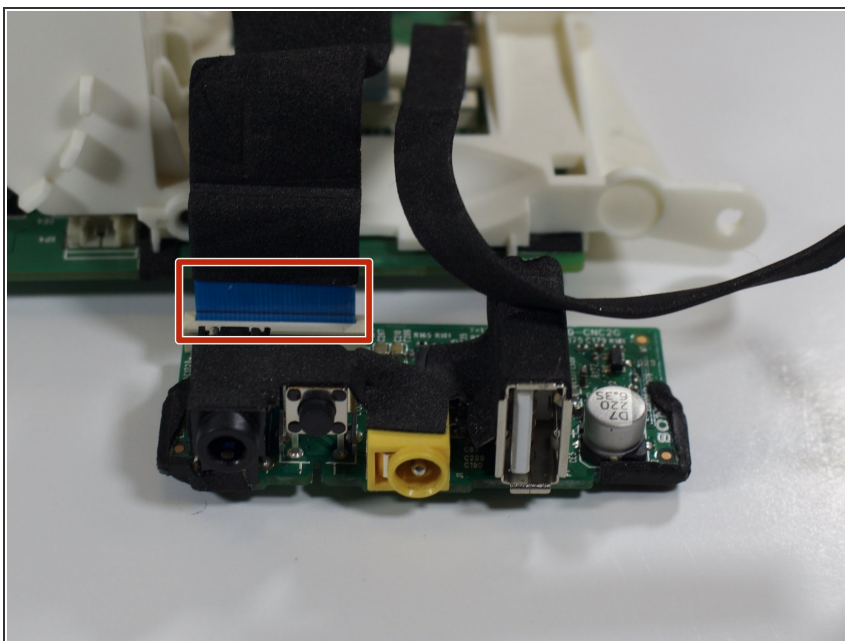


## Step 13



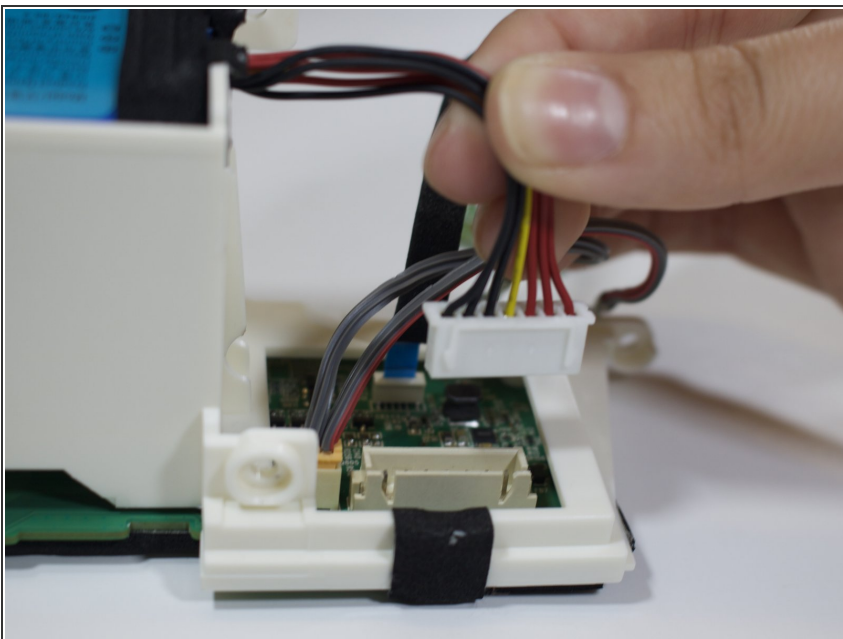
- Take the big spudger and pry the black casing up from the circuit box.

## Step 14



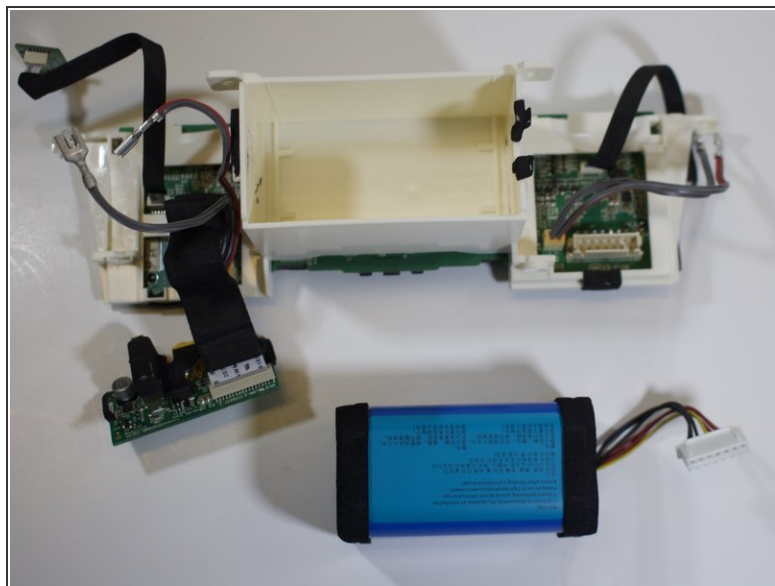
- Locate the blue film attached to the circuit box containing the charging port.
- ⓘ Detach the blue film from the box.

## Step 15



- Detach the yellow, black and red wires by pulling them directly up.

## Step 16



- Insert the spudger along the battery edge and firmly hold the wires. Lift both sides up. The battery will pop out from its encasement.

To reassemble your device, follow these instructions in reverse order.

This document was generated on 2019-12-31 02:34:39 PM (MST).

