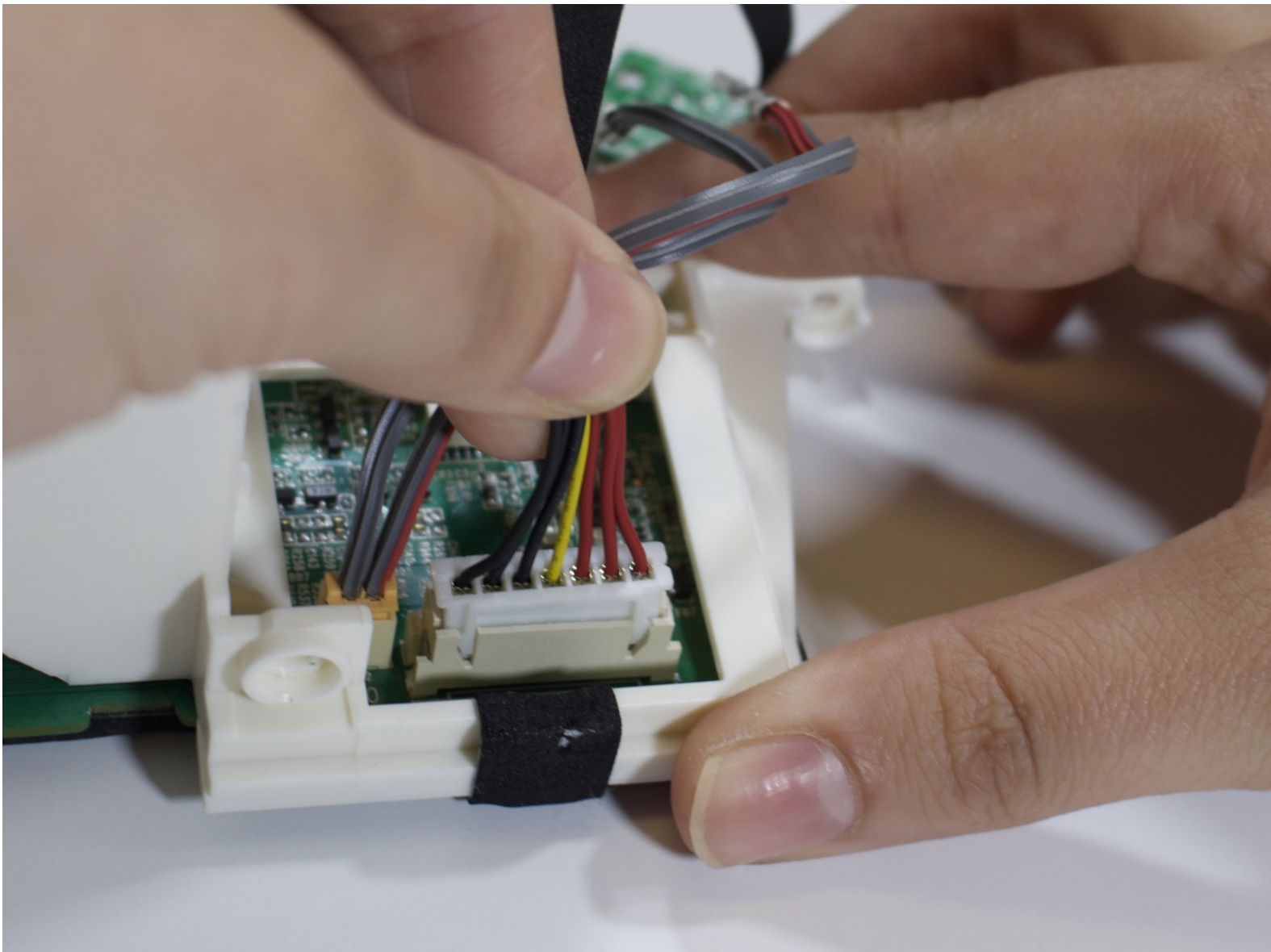




Sony SRS-XB30 Wires Replacement

This guide will help you locate and untangle your device's wires.

Written By: Isabella Durazo





TOOLS:

- [T7 Torx Screwdriver](#) (1)
- [Metal Spudger](#) (1)
- [Phillips #1 Screwdriver](#) (1)

Step 1 — Battery



- To remove the speaker grill, insert the big spudger underneath it in each corner.
- ⓘ Work around the edges to pry the grill up and off.

Step 2



- With the Sony logo facing towards you, use the medium spudger to lift the side plates from the internal frame.
- ⓘ This will need to be done on all four sides of the speaker to remove all four panels
- ⚠ This requires some effort because the adhesive is sticky.

This document was generated on 2020-02-01 07:09:43 PM (MST).

Step 3



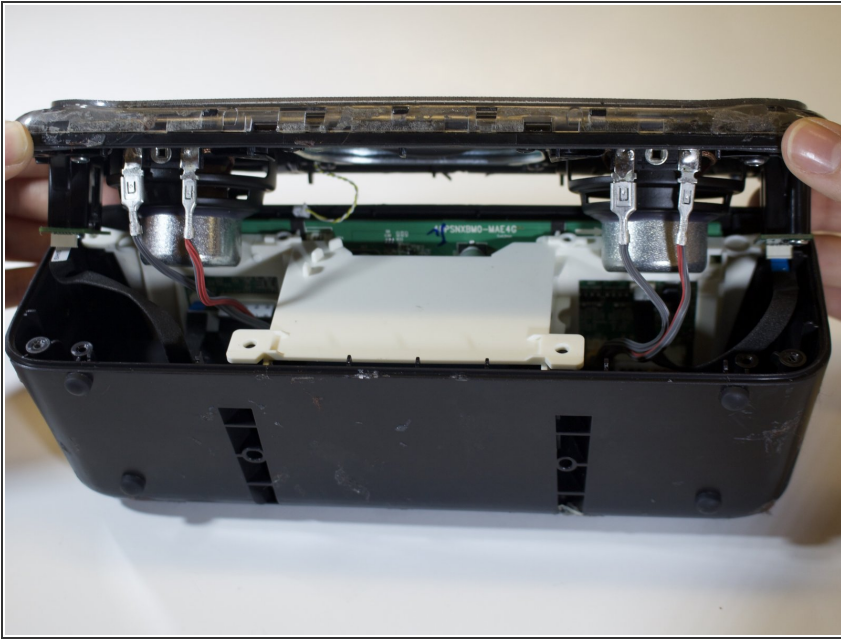
- Locate the four screws on the now exposed front panel.
- ⓘ Using the screwdriver with bit T7, unscrew each screw (15.0 mm long).

Step 4



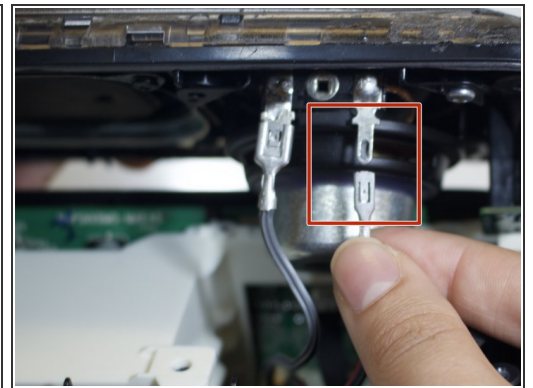
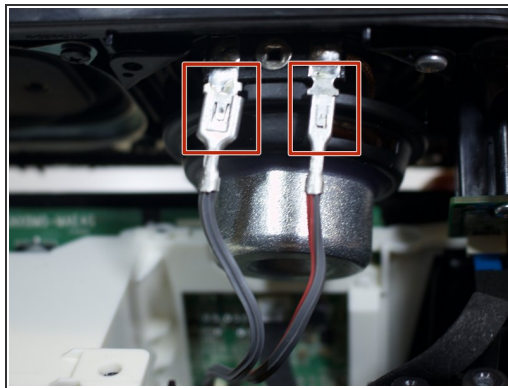
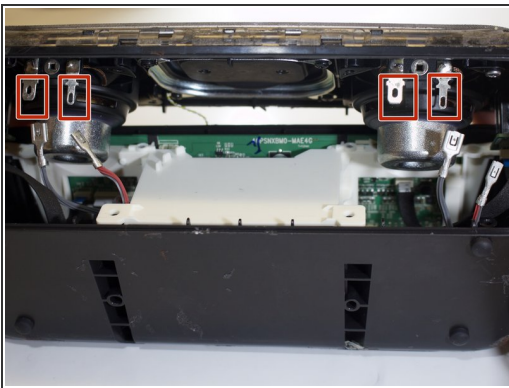
- Next, remove the four outer edge screws, located on each corner of the speaker. The outer edge of the speaker is a clear plastic.
- ⓘ Use the same T7 screwdriver head here.
- Remove each of the four corner screws (15.0 mm long).

Step 5



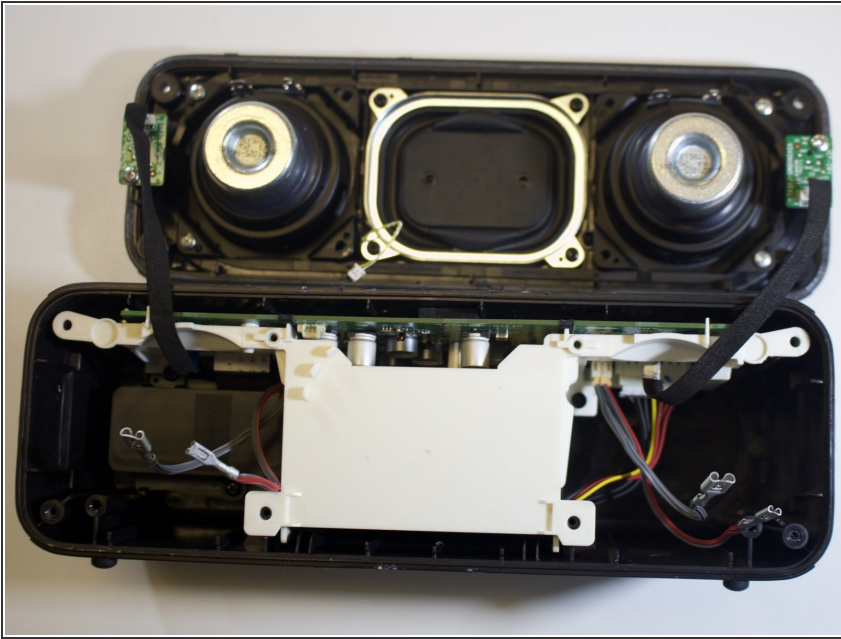
- With a little force, carefully lift the lid of the speaker.
- ⓘ Make sure that you do not pull on the wires.

Step 6



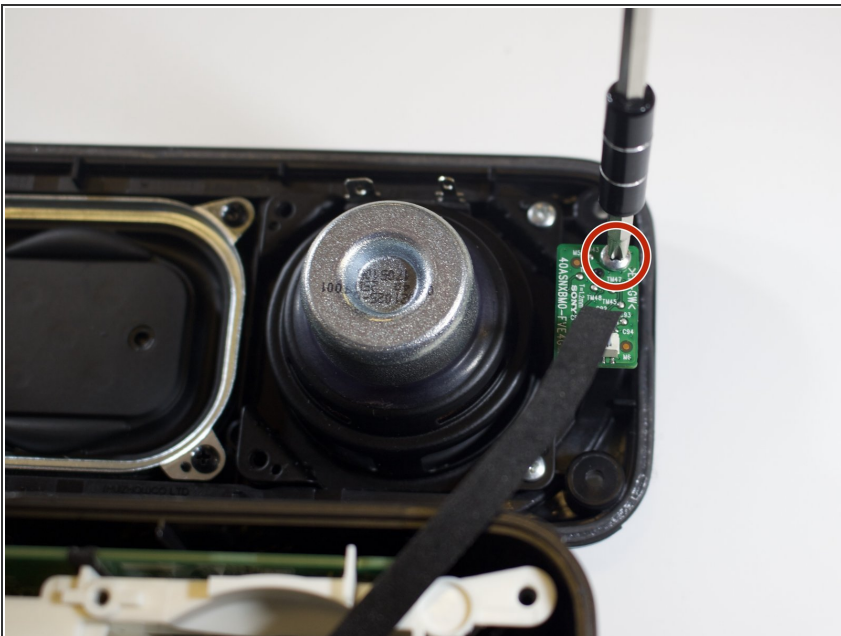
- Unclip the four wire connectors (that are attached to the speaker lid).
- Disconnect the thin yellow wire (attached to the speaker lid) from its port.

Step 7



- Separate the speaker lid from the bottom frame.
- ① To prepare the speaker for the next step place the lid parallel to the frame.

Step 8



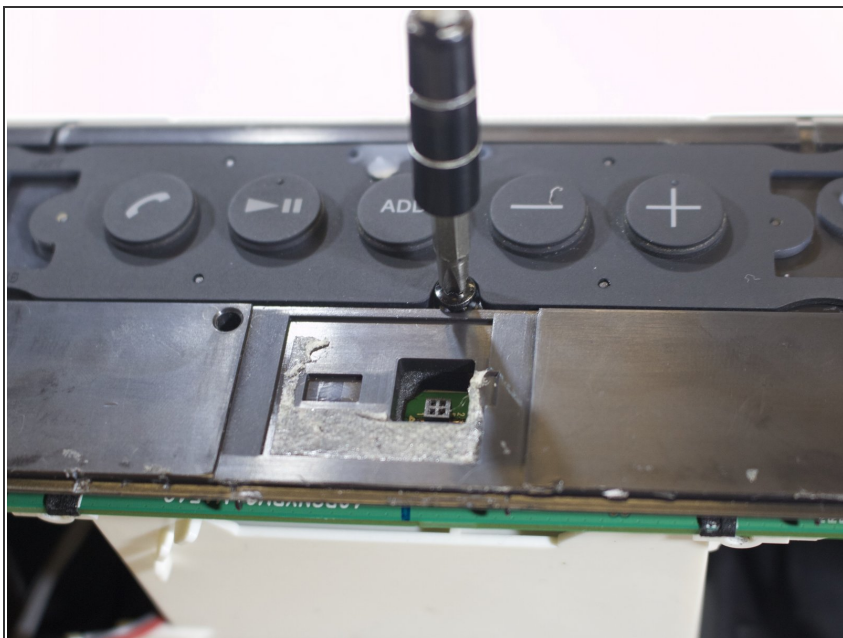
- Locate the two silver screws (9 mm) attached to the two LED-light-chips on the speaker lid.
- ① Using the screwdriver with bit PH1, unscrew each screw.

Step 9



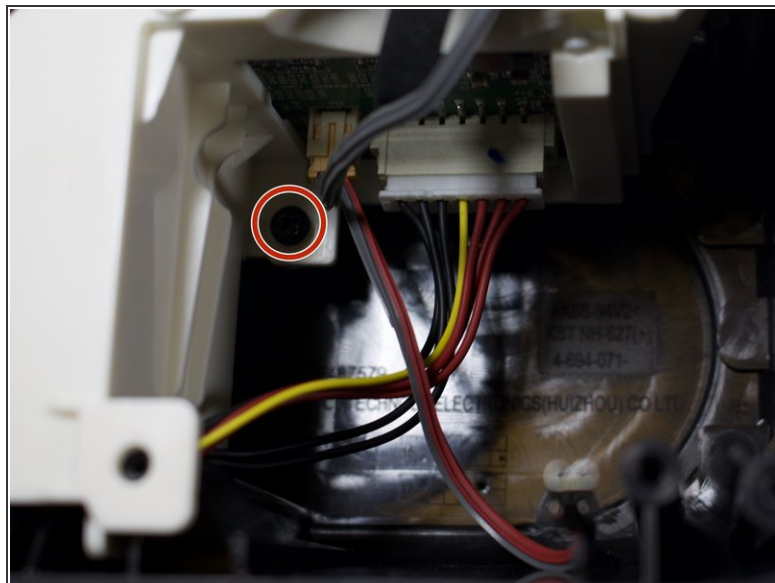
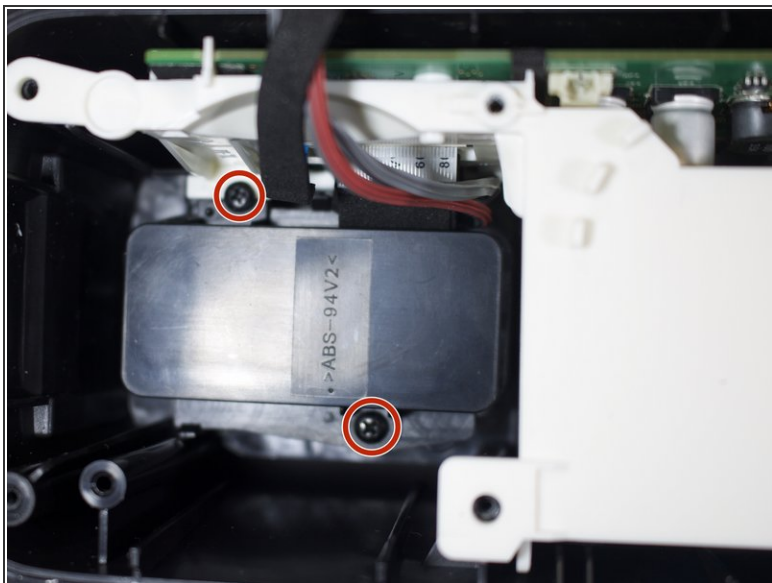
- Separate the speaker lid entirely from the bottom frame.

Step 10



- Remove the top screw (10 mm).
- ① Use the screwdriver with bit T7.

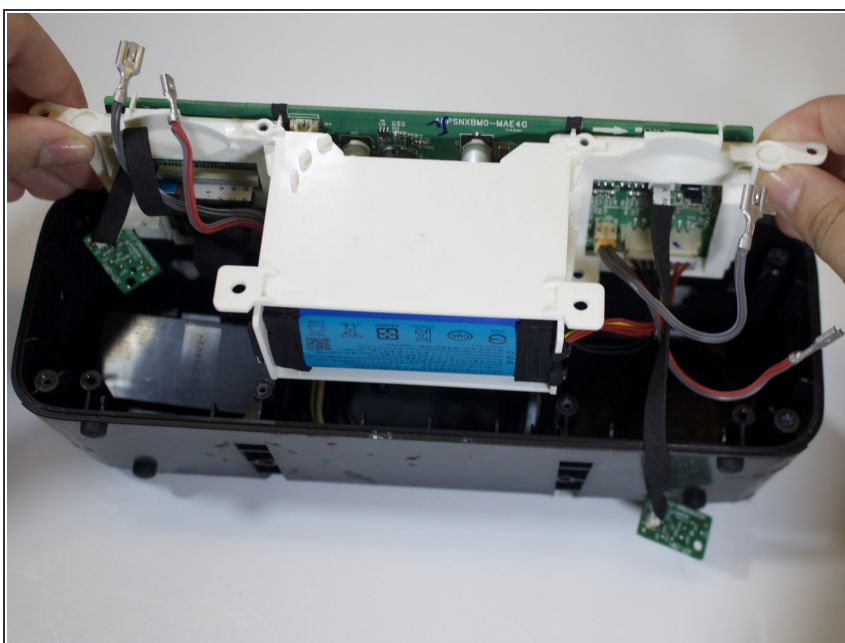
Step 11



- Locate and remove the three black screws (10.0 mm) within the internal frame. Use bit T7.

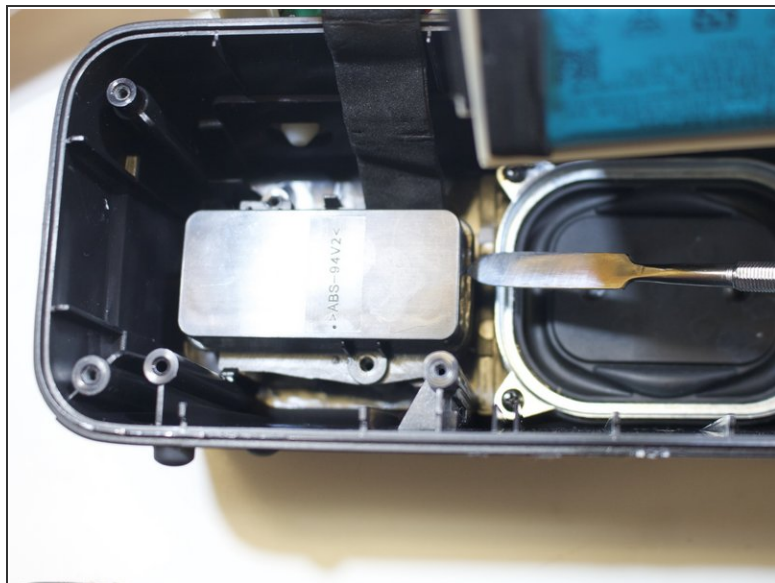
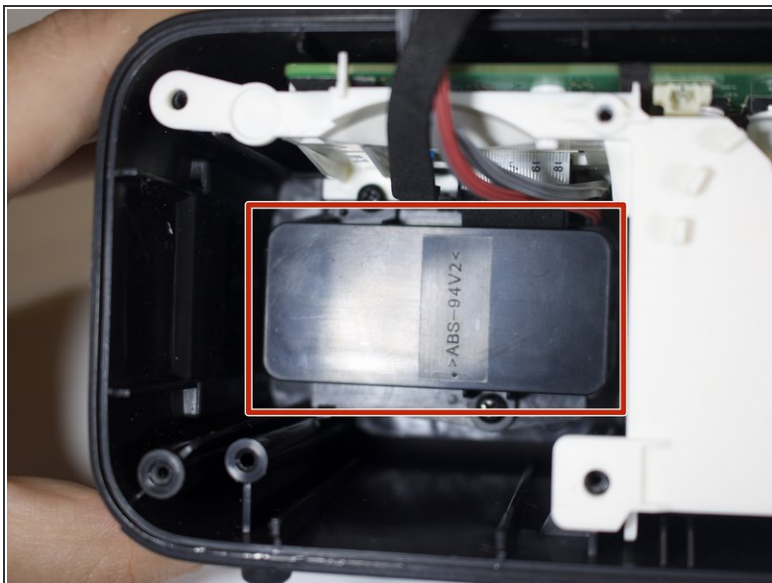
i There are two screws on the left side of the white box and one to its right.

Step 12



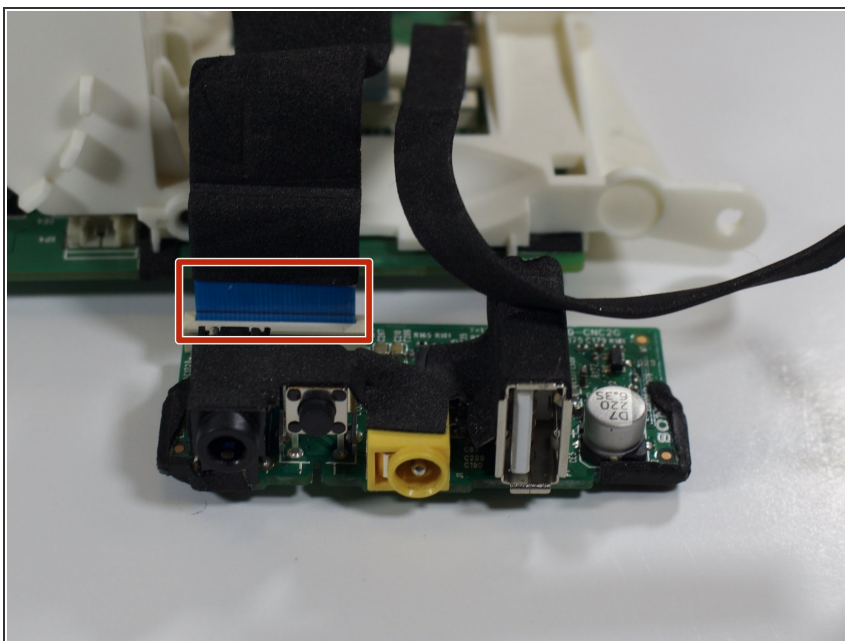
- Slightly lift the white box with all the wires still attached.

Step 13



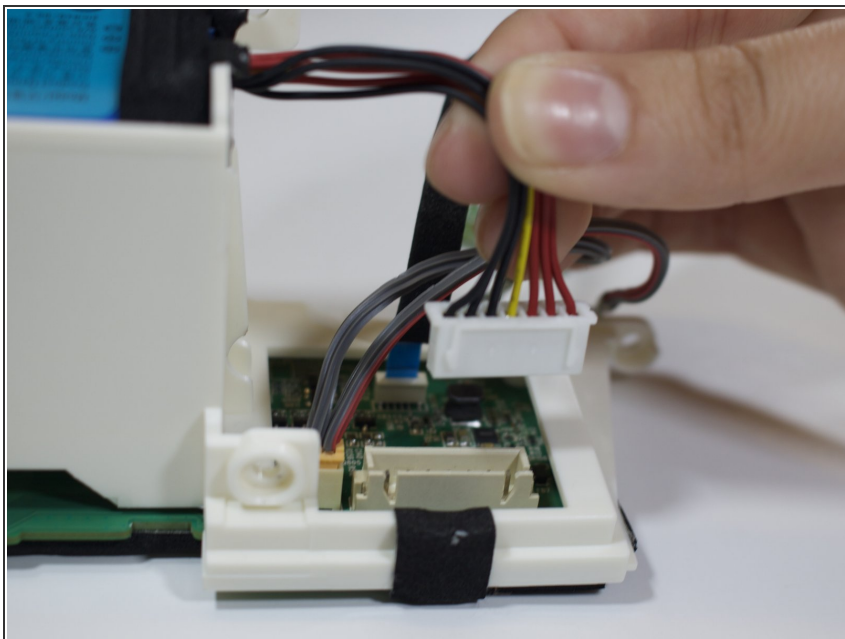
- Take the big spudger and pry the black casing up from the circuit box.

Step 14



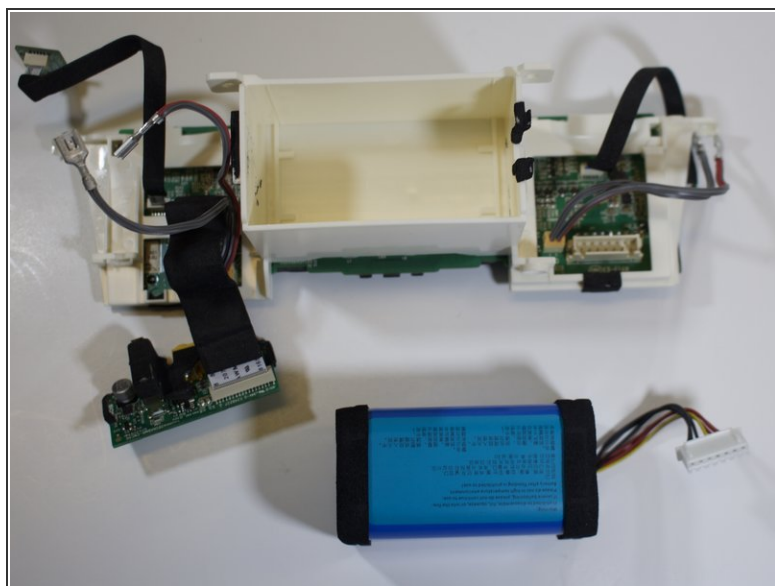
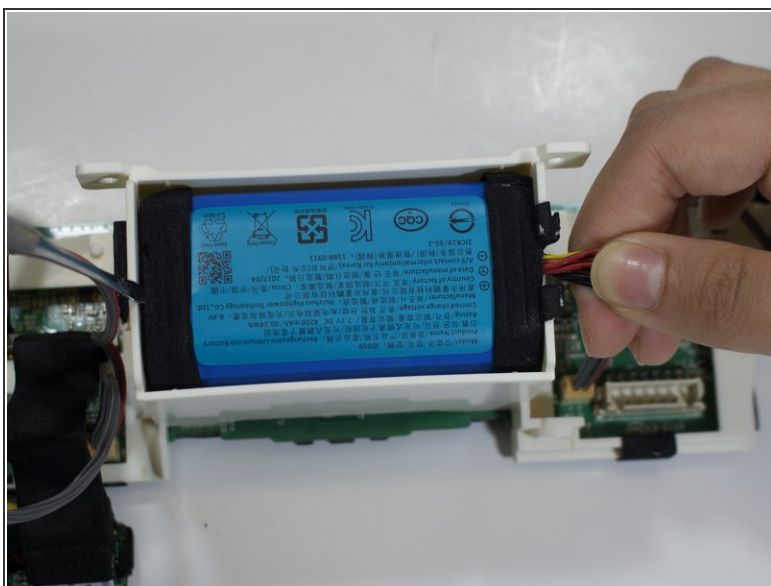
- Locate the blue film attached to the circuit box containing the charging port.
- ⓘ Detach the blue film from the box.

Step 15



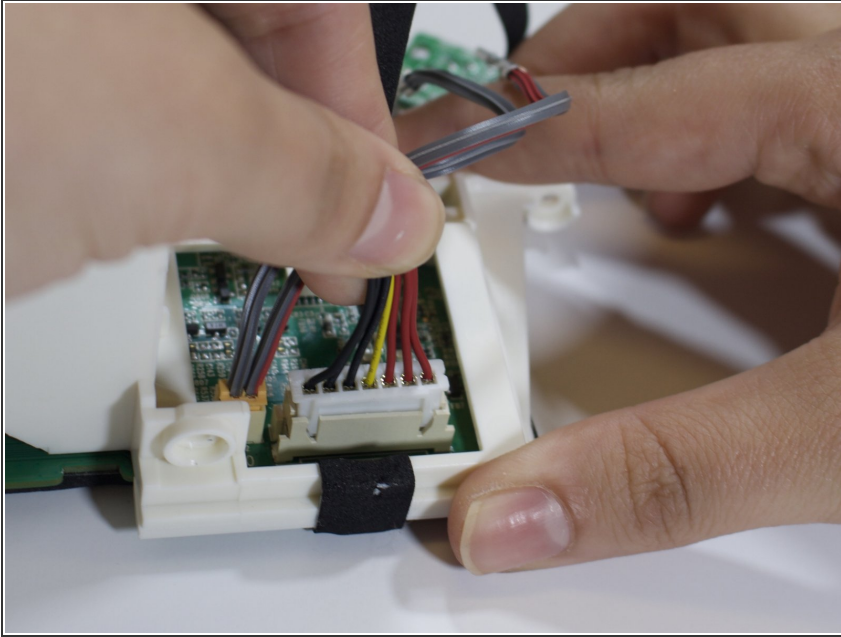
- Detach the yellow, black and red wires by pulling them directly up.

Step 16



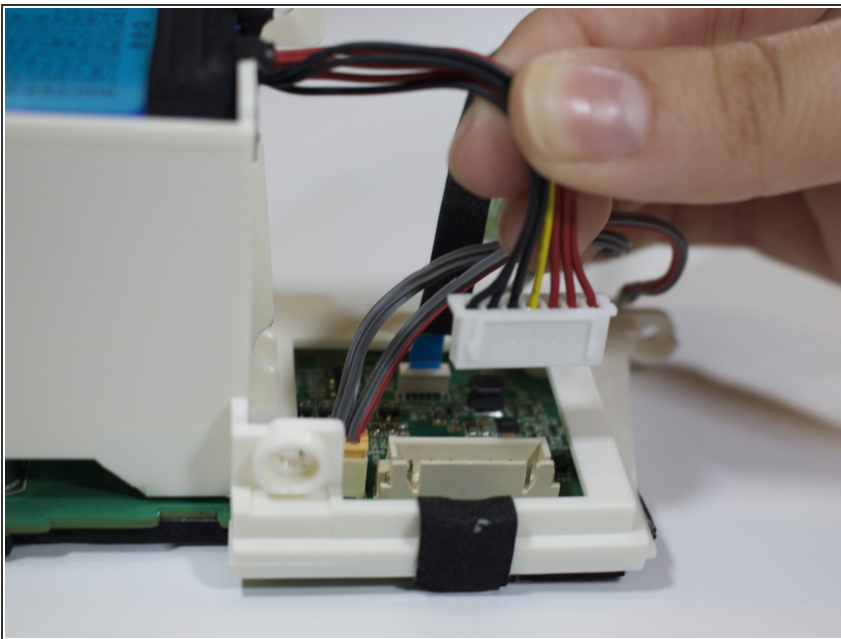
- Insert the spudger along the battery edge and firmly hold the wires. Lift both sides up. The battery will pop out from its encasement.

Step 17 — Wires



- Locate the black, yellow, and red wires and steadily pull them smooth if they are tangled.

Step 18



- Unravel any tangled wires or replace any damaged wires.
- ⓘ The wires should all run parallel to one another.

To reassemble your device, follow these instructions in reverse order.