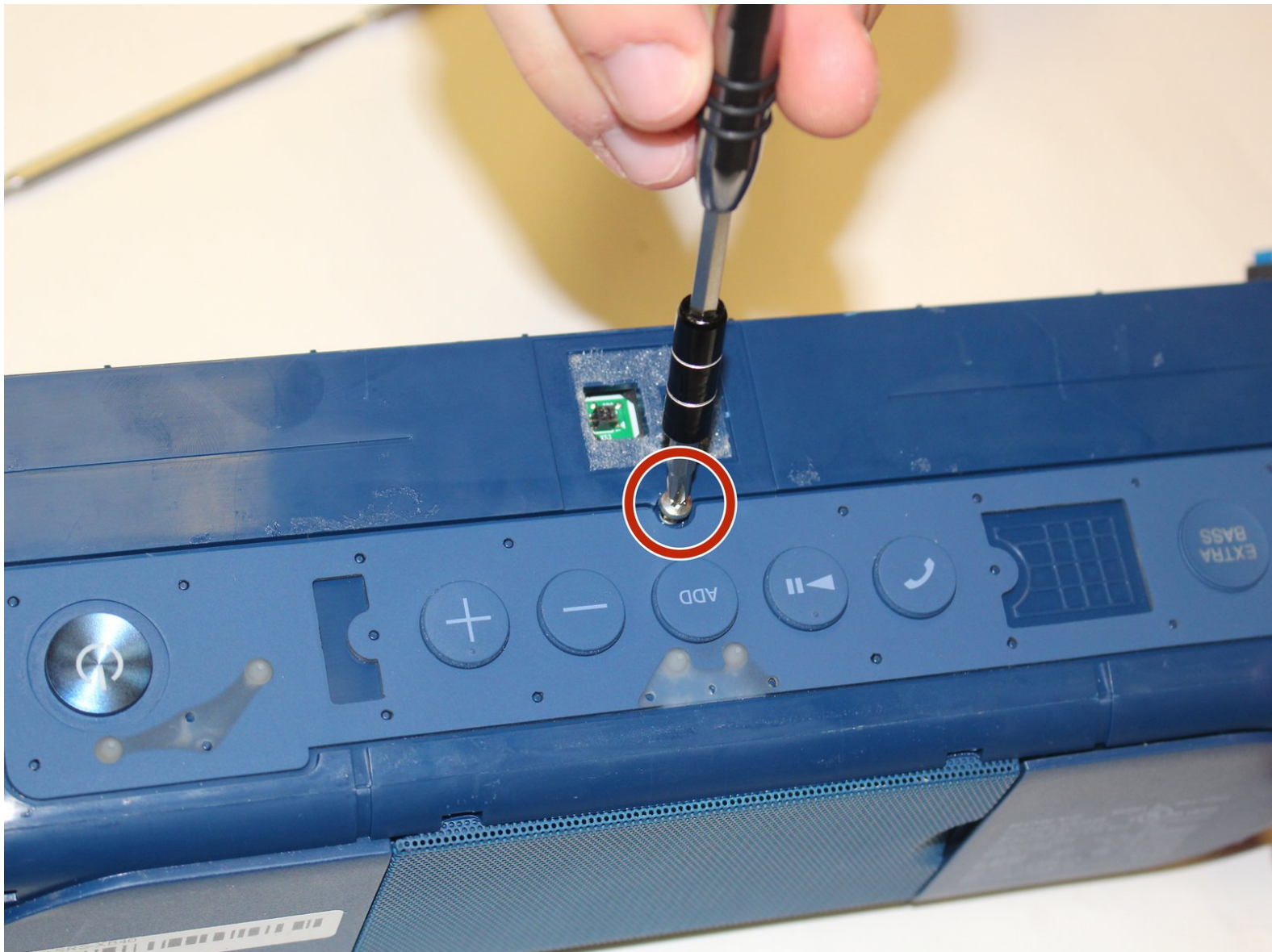




Sony SRS-XB40 Battery Replacement

This guide will inform you how to replace a faulty battery in the Sony SRS-XB40.

Written By: Michael Shropshire



INTRODUCTION

This guide will instruct you how to disassemble the speaker in order to replace the battery. It's a task that shouldn't take longer than 30 minutes and has a moderate difficulty.

TOOLS:

- [T8 Torx Screwdriver](#) (1)
 - [Metal Spudger](#) (1)
 - [64 Bit Driver Kit](#) (1)
 - [Phillips #1 Screwdriver](#) (1)
-

Step 1 — Speaker Assembly Replacement



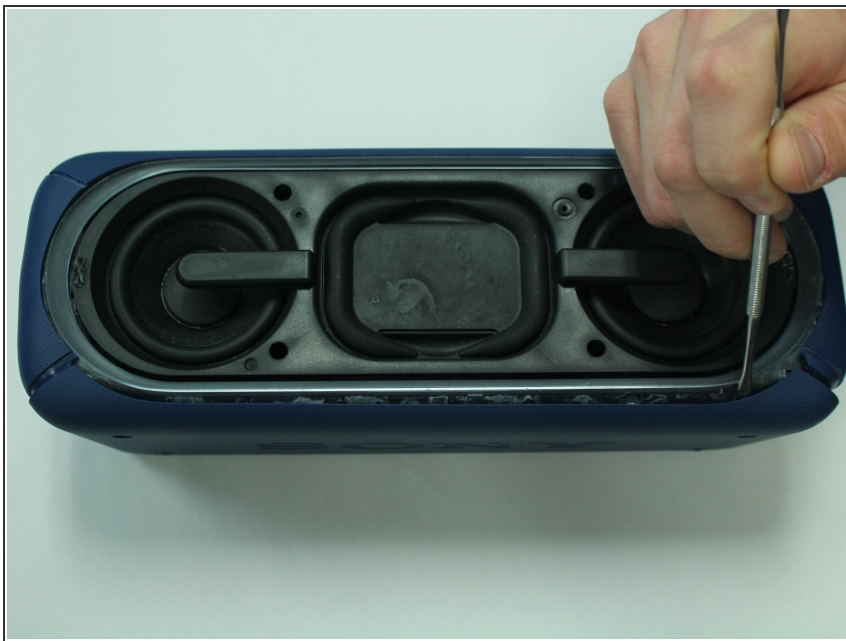
- Remove the speaker case from the outer casing by prying it from the base of the speaker using a metal spudger.

Step 2



- Remove the four T-8 screws (15 mm long) from the black speaker face.

Step 3



- Pry the two rubber end pieces loose enough to pry off two pieces of the long plastic casing from the speaker body using a metal spudger.

Step 4



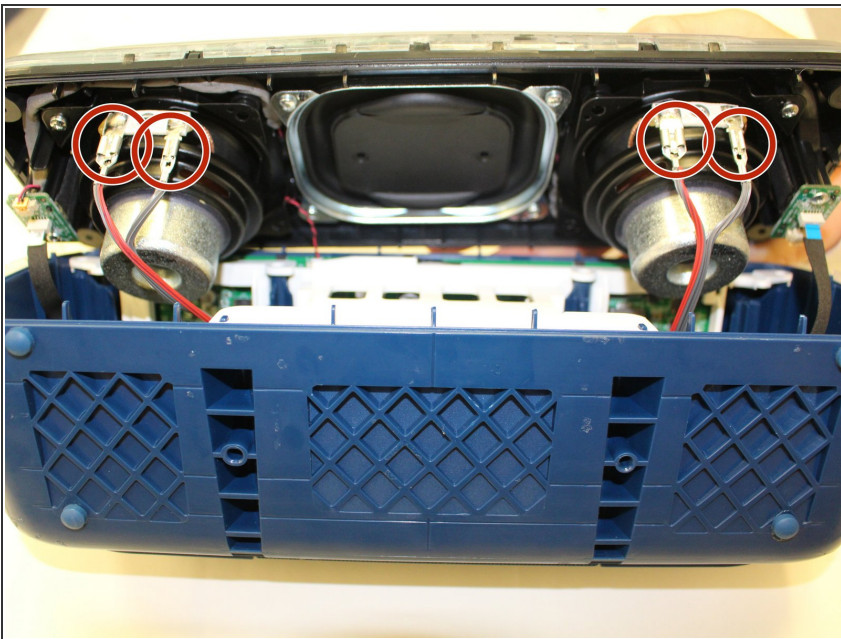
- Pry the two remaining rubber pieces of the casing completely away from the body of the speaker with the same metal pry tool.

Step 5



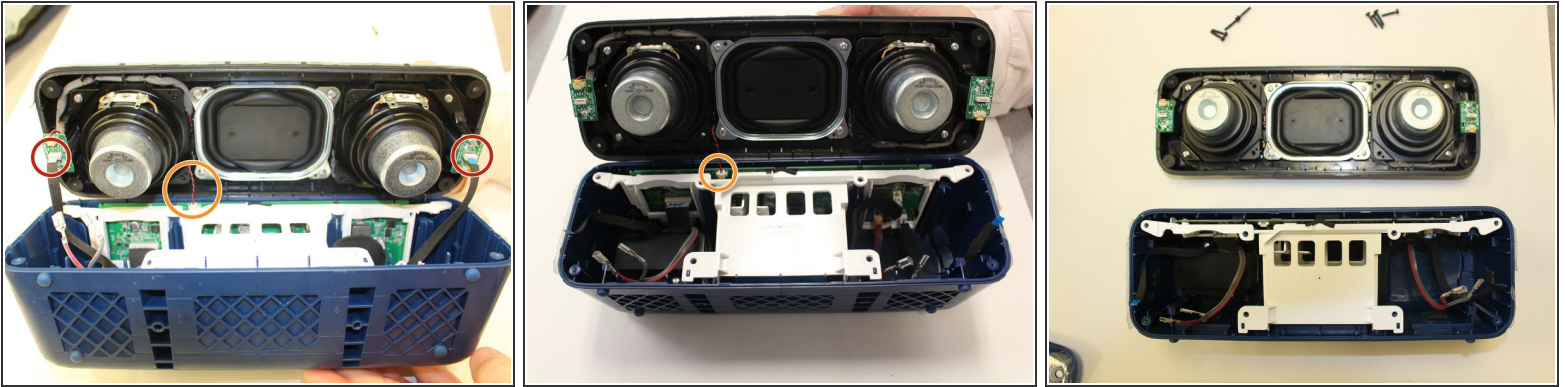
- Once you have removed the outer blue casing, four T-8 screws (15 mm long) will be revealed on each corner. After removing these screws, simply pull the top part of the speaker way from the body to get the the inner part of the speaker.

Step 6



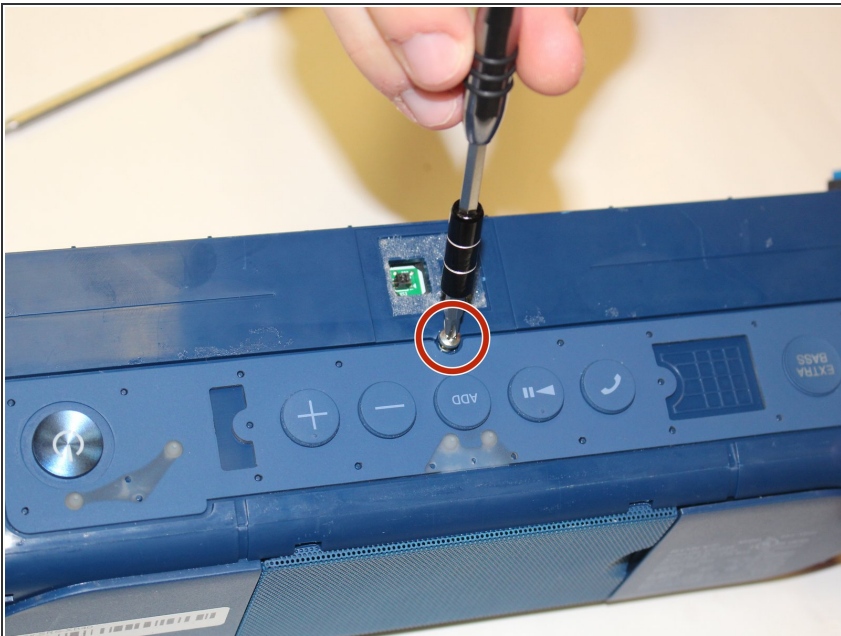
- Once you have gotten to the internal parts of the speaker, there are seven wires connecting the speaker plate to the body of the speaker. Pinch the release tabs at the top of each of the four main wires to remove them.

Step 7



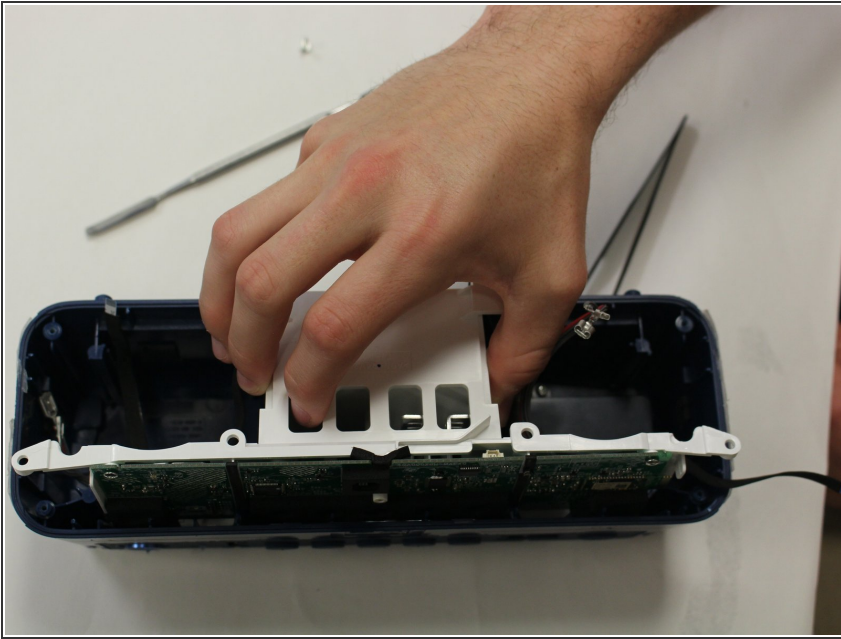
- Simply pull the thin wires on each side to remove them from their attachment points.
- Remove the final red and black wire by gently pulling it apart.
- This will ultimately detach the speaker plate from the base.

Step 8 — Battery



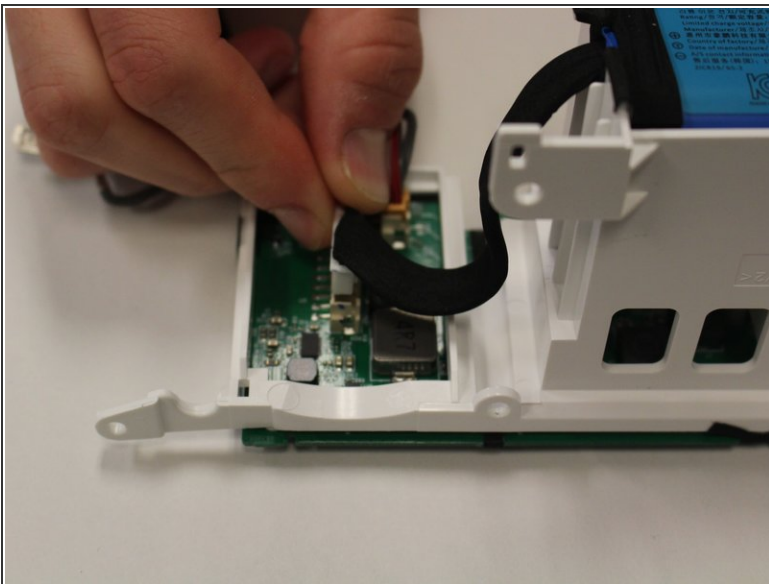
- Unscrew the PH1 screw at the top of the speaker.

Step 9



- Slide the white protective case out of the speaker.

Step 10



- Unplug the wire that connects the battery to the motherboard.
- To remove the battery, peel away the tape that holds the battery in place.

To reassemble your device, follow these instructions in reverse order.