



# Sony SRS-XB40 LED Control Panel Replacement

This guide will show you how to disassemble and replace the electrical boards that control the LED lights throughout the speaker.

Written By: Zack Coker



---

## INTRODUCTION

In this guide, you will be removing and replacing a faulty LED control panel located on the back of the speaker plate. If your LED lights aren't working on your SONY SRS-XB40 speaker, then more than likely the control panel is at fault.



### TOOLS:

- [T8 Torx Screwdriver](#) (1)
  - [Metal Spudger](#) (1)
  - [64 Bit Driver Kit](#) (1)
-

## Step 1 — Speaker Assembly Replacement



- Remove the speaker case from the outer casing by prying it from the base of the speaker using a metal spudger.

## Step 2



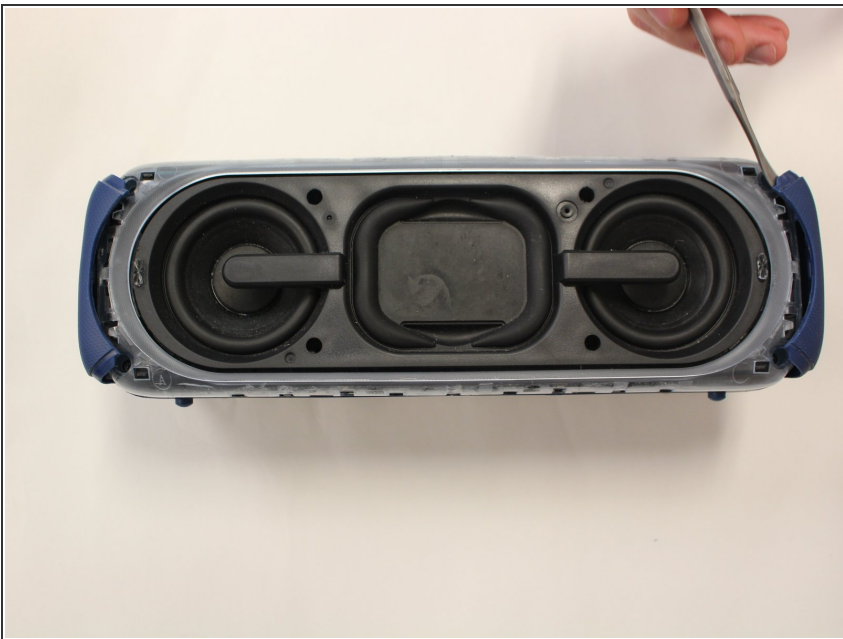
- Remove the four T-8 screws (15 mm long) from the black speaker face.

### Step 3



- Pry the two rubber end pieces loose enough to pry off two pieces of the long plastic casing from the speaker body using a metal spudger.

### Step 4



- Pry the two remaining rubber pieces of the casing completely away from the body of the speaker with the same metal pry tool.

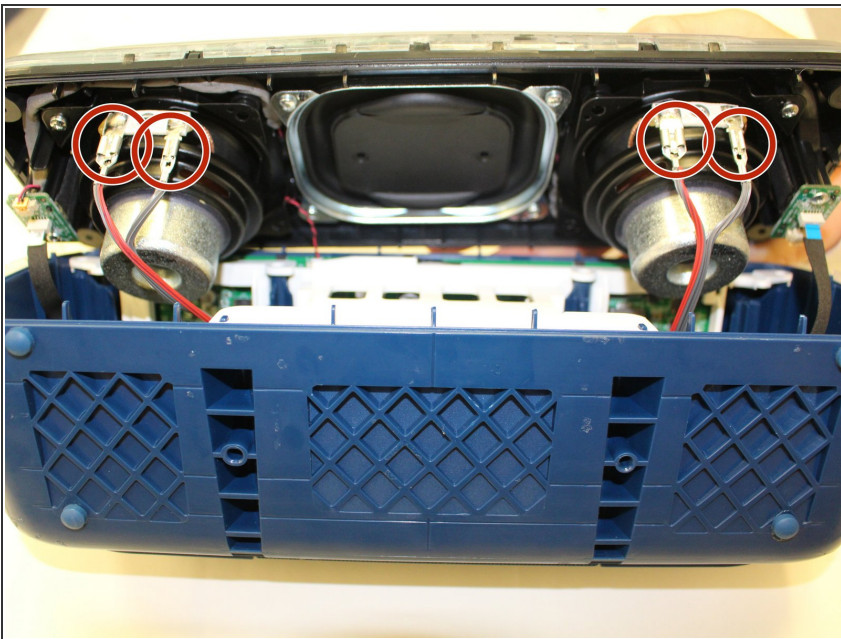


## Step 5



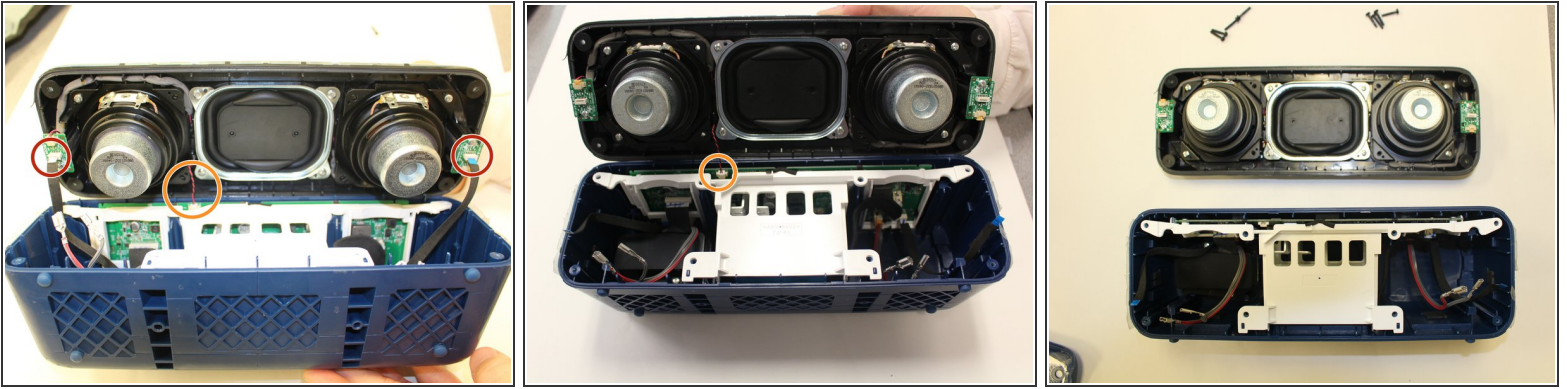
- Once you have removed the outer blue casing, four T-8 screws (15 mm long) will be revealed on each corner. After removing these screws, simply pull the top part of the speaker way from the body to get the the inner part of the speaker.

## Step 6



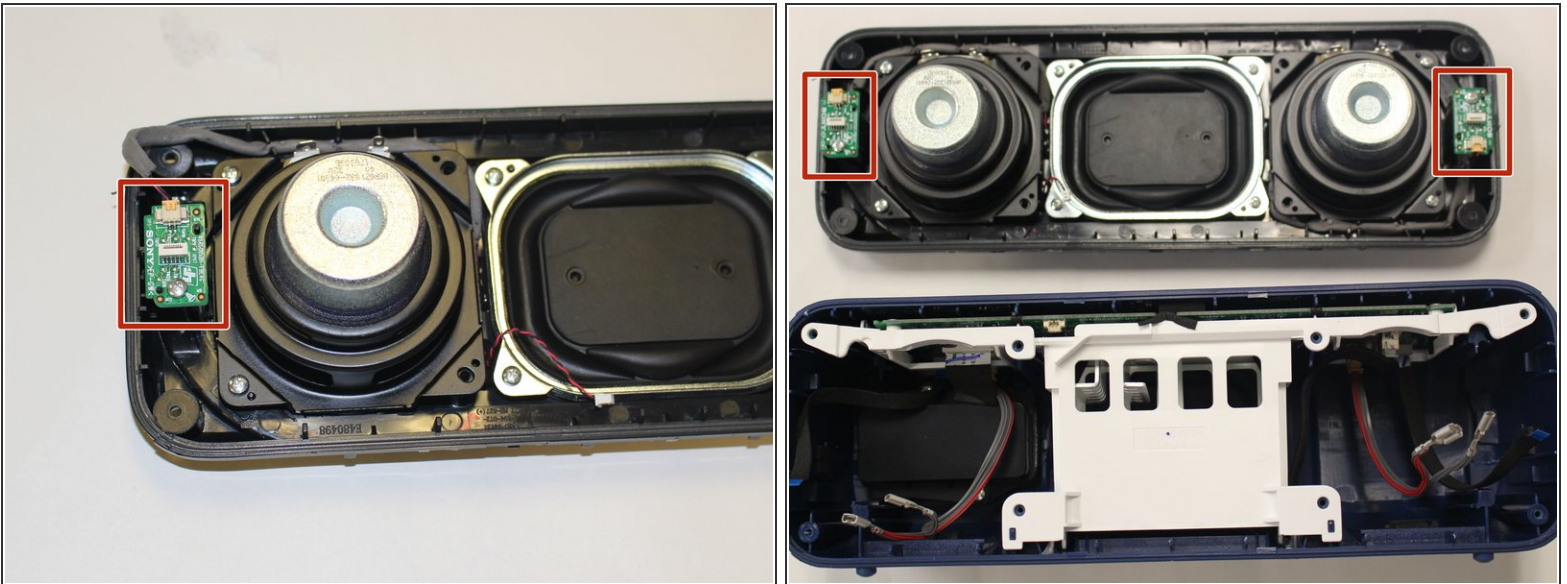
- Once you have gotten to the internal parts of the speaker, there are seven wires connecting the speaker plate to the body of the speaker. Pinch the release tabs at the top of each of the four main wires to remove them.

## Step 7



- Simply pull the thin wires on each side to remove them from their attachment points.
- Remove the final red and black wire by gently pulling it apart.
- This will ultimately detach the speaker plate from the base.

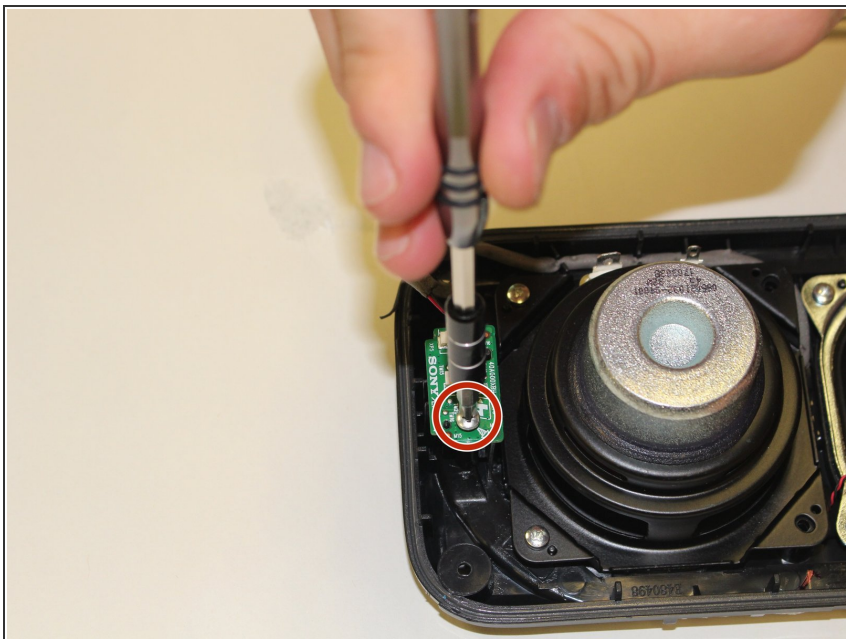
## Step 8 — LED Control Panel



- After you take the speaker plate off the body of the speaker, locate the LED control panels on each end of the speaker plate.

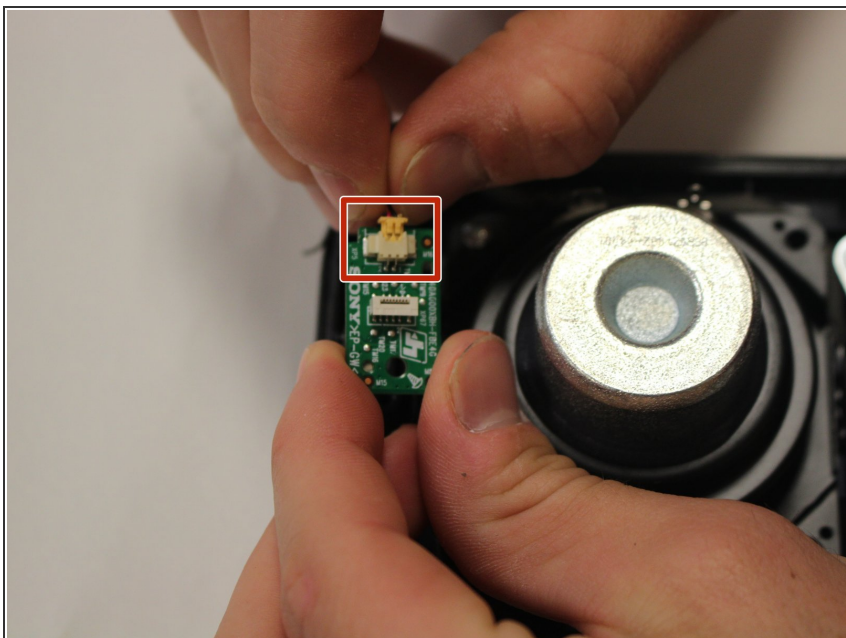


## Step 9



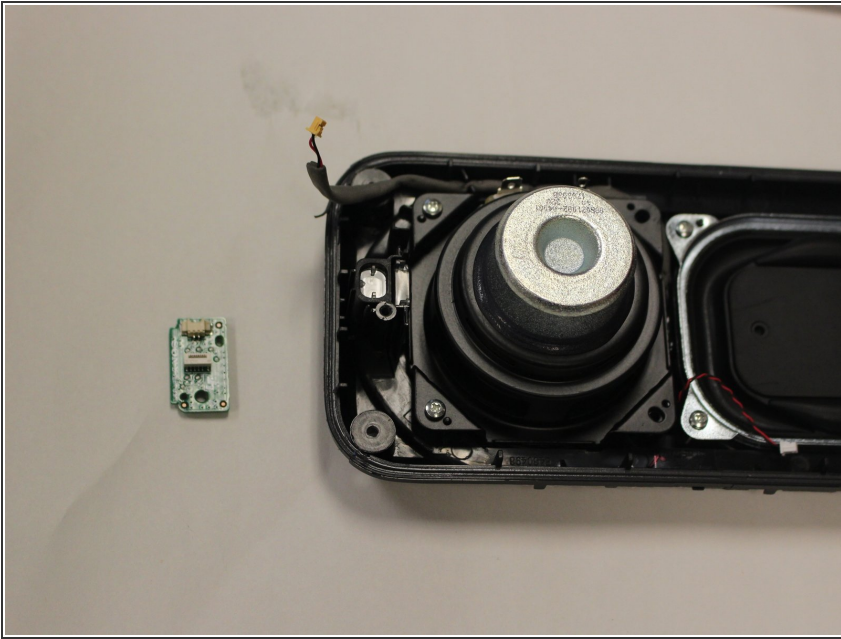
- Unscrew the 10mm PH1 screw from each control panel.
- The green panel should now be loose and connected only by the red and black plug in.

## Step 10



- Carefully unplug the wire from the panel, releasing the panel from the speaker plate.

## Step 11



- Your LED light control panel is now disassembled and ready to replace.

To reassemble your device, follow these instructions in reverse order.