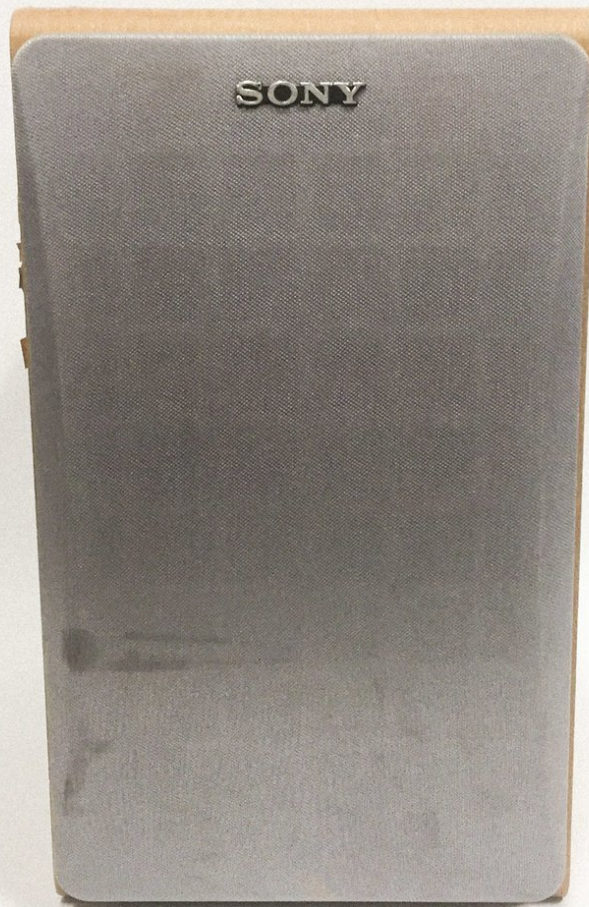




# Sony SS-CCP1 Screen Replacement

Removing front protective screen to gain access to speaker retaining screws. "Prerequisite Only"

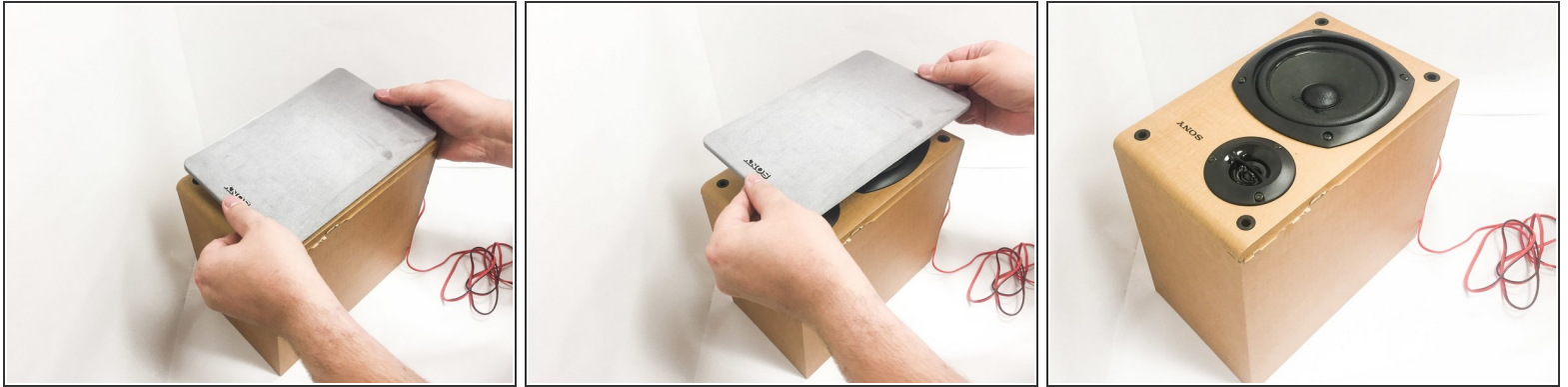
Written By: Dallas



## INTRODUCTION

This will remove the protective front screen so that all the speakers and wires will be accessible for removal.

## Step 1 — Screen



- Pull screen cover from the edges for removal. This will not require much effort.

To reassemble your device, follow these instructions in reverse order.