



Sony SS-CCP1 Speaker Replacement

This guide shows the steps to removing both the 12cm loudspeaker and the 2.5cm tweeter.

Written By: Dallas



INTRODUCTION

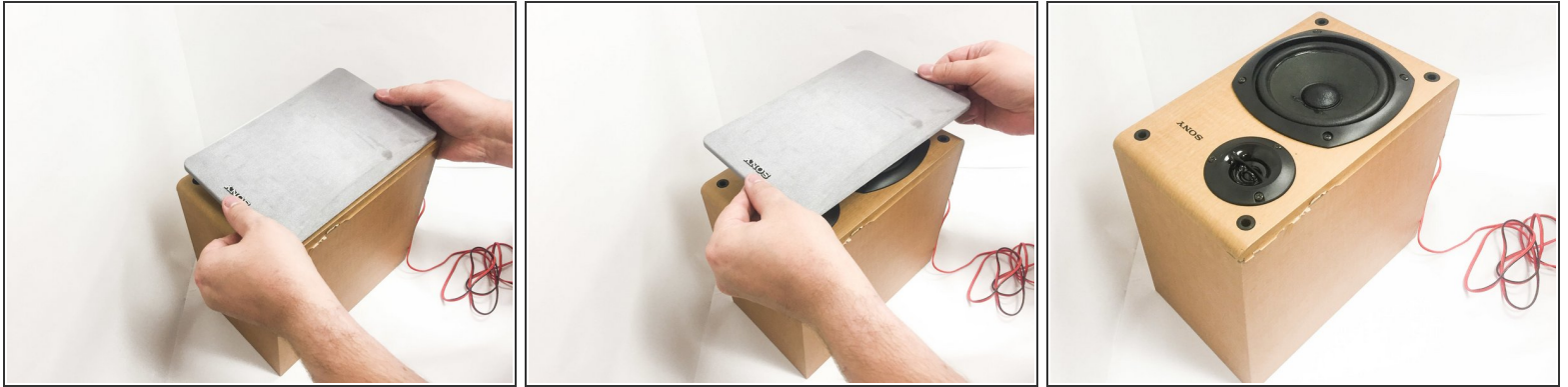
This guide will show the steps for removing each speaker from the box and the procedure for removing all wires from the speakers.



TOOLS:

- [Phillips #0 Screwdriver](#) (1)
 - [Slip Joint Pliers](#) (1)
 - [iFixit Opening Tools](#) (1)
-

Step 1 — Screen



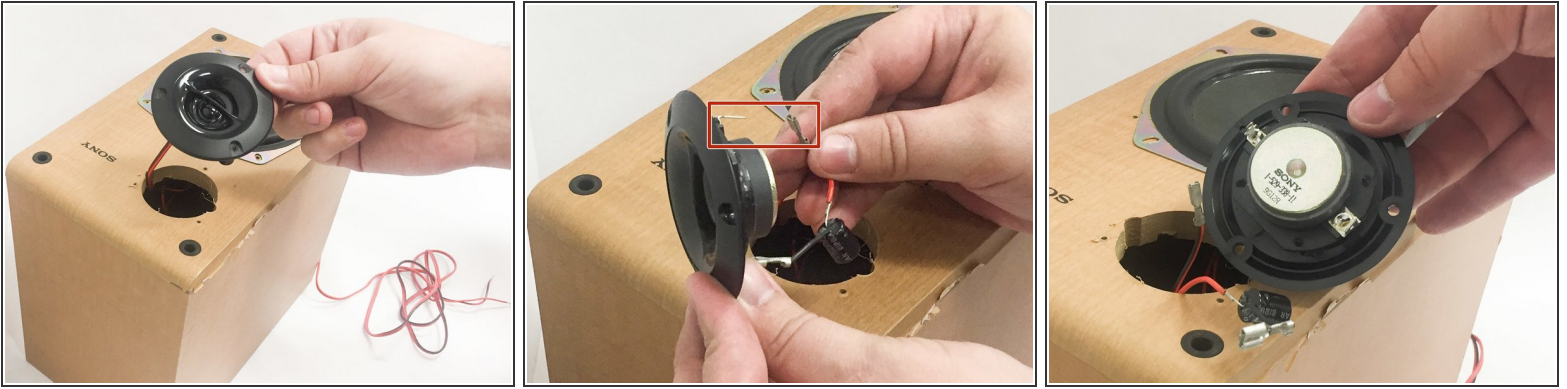
- Pull screen cover from the edges for removal. This will not require much effort.

Step 2 — Speaker



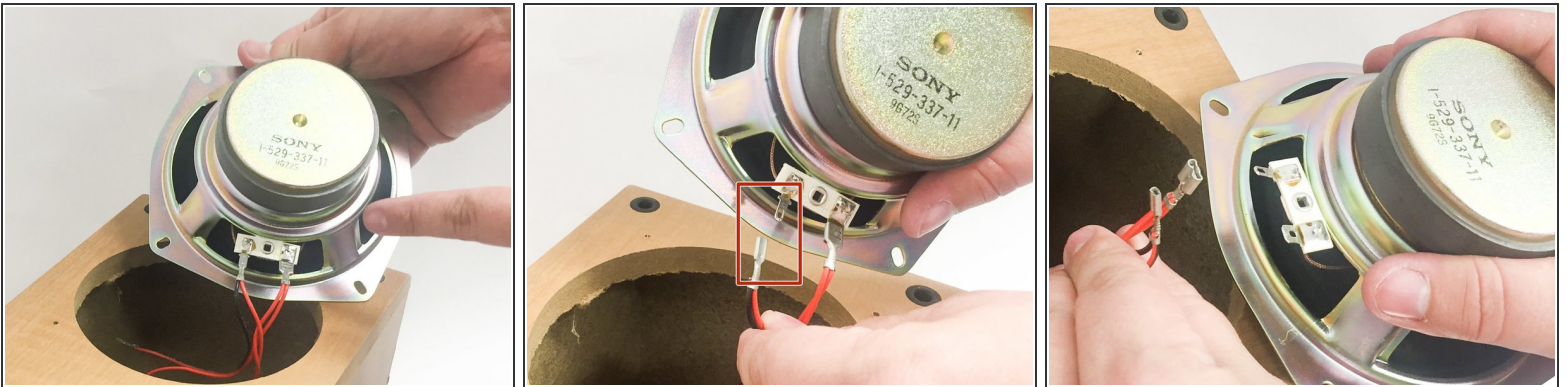
- Remove the seven 18.06mm PH1 screws.

Step 3



- Remove the crimps from the tweeter speaker.
- If its not connected too tightly the crimps can be removed by hand pressure only.
- ⓘ If its too tight to be removed by hand, then you can use a pair of pliers to removed the crimps.
- ✦ Never remove by pulling on the cables. Always pull by the metal crimps.

Step 4



- Remove the crimps from the 12cm loudspeaker.
- If its not connected too tightly the crimps can be removed by hand pressure only.
- ⓘ If its too tight to be removed by hand, then you can use a pair of pliers to removed the crimps.
- ⚠ Never remove by pulling on the cables. Always pull by the metal crimps.

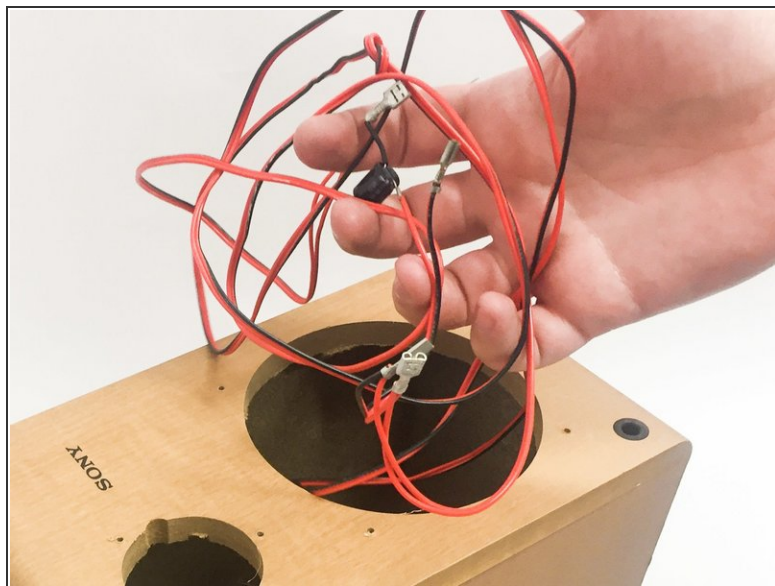
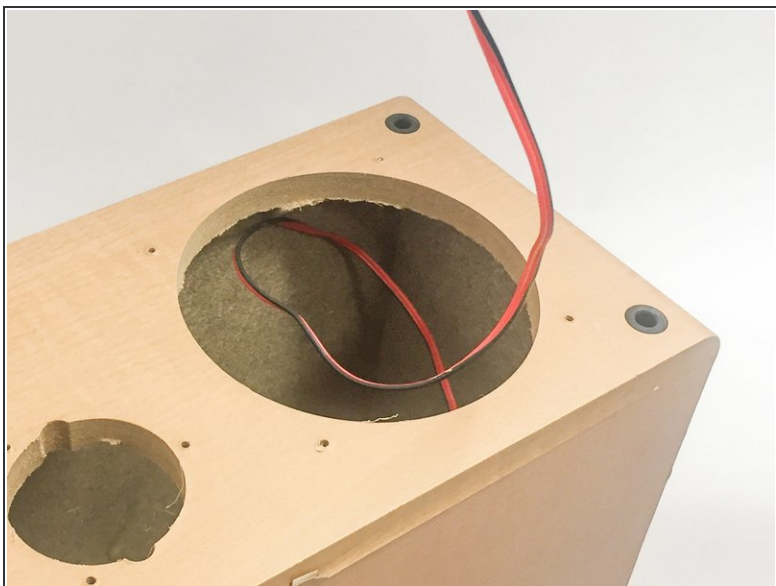
Step 5



- Remove the grommet using an object with a flat edge.

⚠ The grommet is not made of rubber, it is made of plastic. Be careful when removing it, as it can break easily.

Step 6



- Feed the speaker cable through the front of the box.

To reassemble your device, follow these instructions in reverse order.