



Sony Smart Watch SW2 Display Assembly Replacement

This guide will provide instructions to safely open up and access the interior of the Sony Smart Watch SW2 watch, as well as detaching the LCD screen.

Written By: Vincent Shiue



INTRODUCTION

In this guide we will be taking the Sony Smart Watch SW2 watch out of its housing to remove its screen in order to reach the interior components. This process will only require a small tool with a flat edge.

TOOLS:

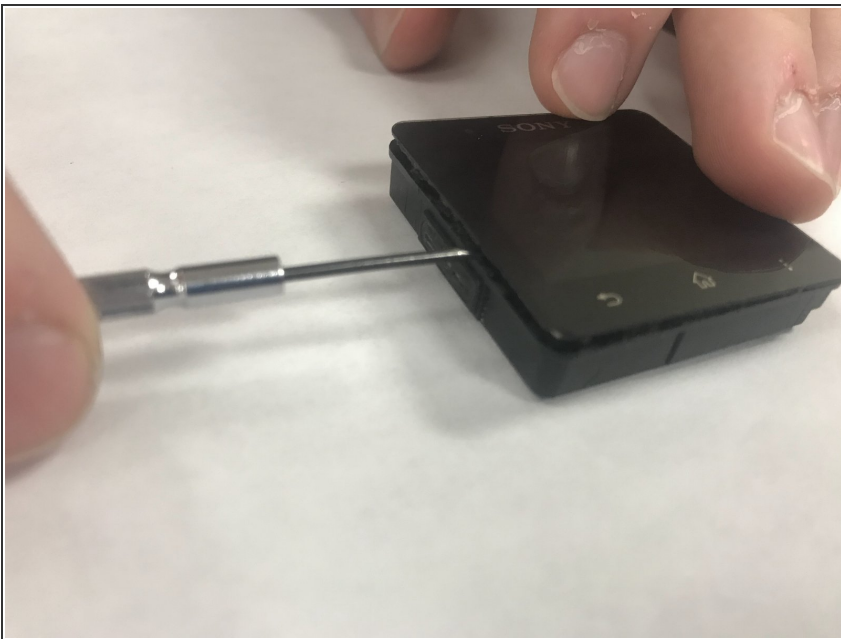
- [Flathead Screwdriver](#) (1)
 - [iFixit Opening Tools](#) (1)
-

Step 1 — Display Assembly



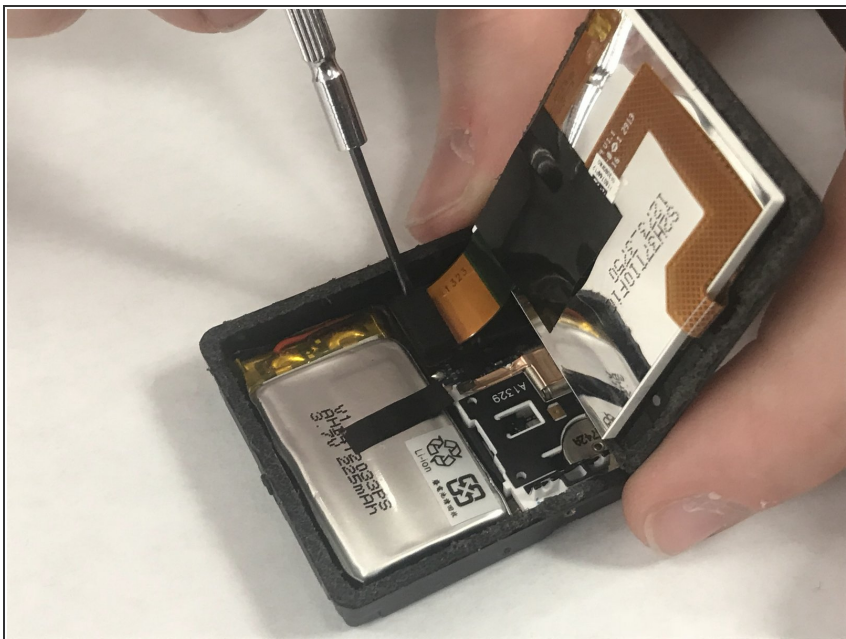
- Detach the smart watch from the band by pushing on the back of the watch housing.
 - ☑ The power button may fall out once the smart watch is detached.
- ⓘ Set aside the power button and watch band as they are no longer needed for further disassembly.

Step 2



- Use a plastic opening tool to carefully pry the LCD screen from the watch housing.

Step 3



- Use a plastic opening tool or spudger to lift the screen assembly press-fit connector free.

Step 4



- Set aside the detached LCD screen to access the battery.

To reassemble your device, follow these steps in reverse order.