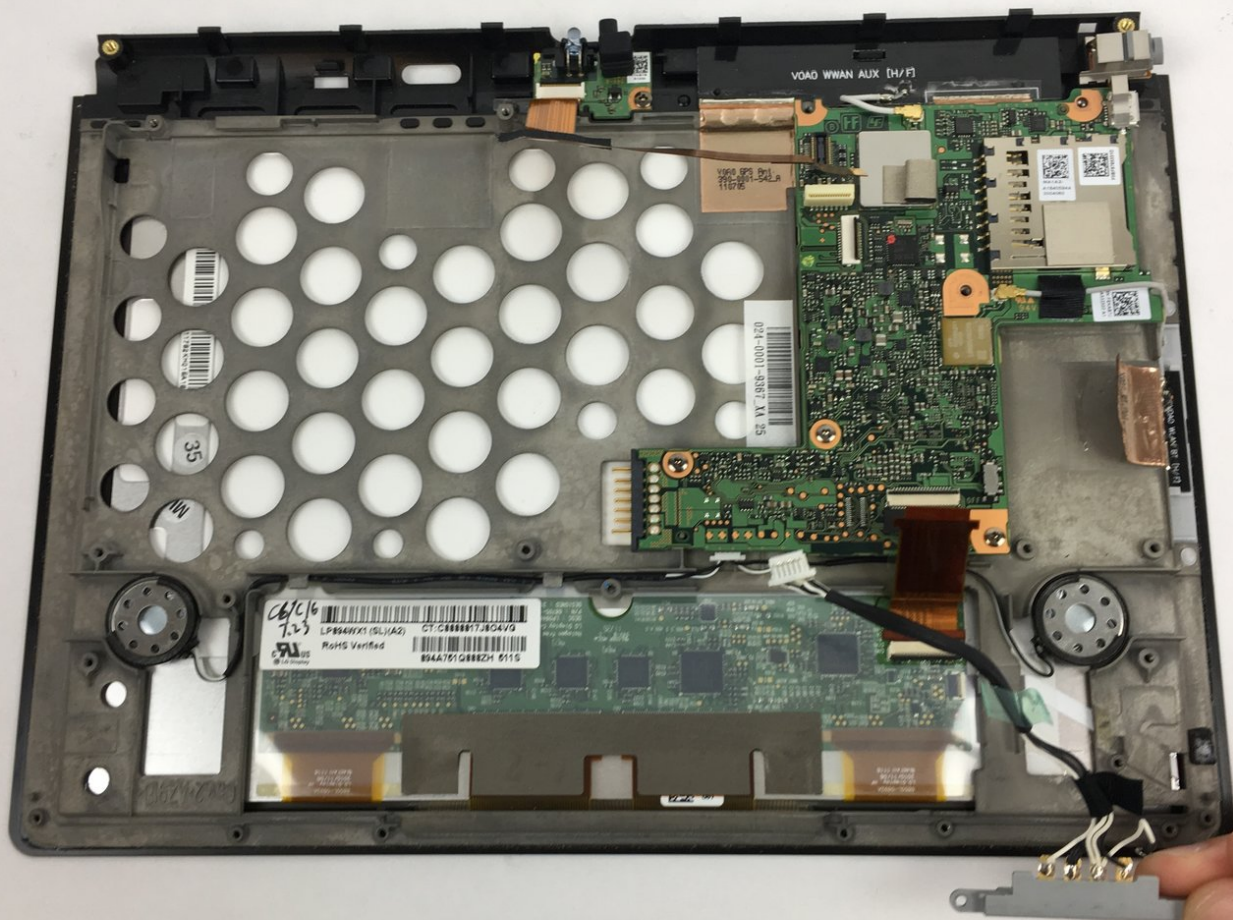




Sony Tablet S Charging Connector Replacement

This guide demonstrates how to replace the charging port assembly.

Written By: Austin Mann






TOOLS:

- [Phillips #0 Screwdriver](#) (1)
 - [Phillips #000 Screwdriver](#) (1)
 - [iFixit Opening Tools](#) (1)
 - [Spudger](#) (1)
-

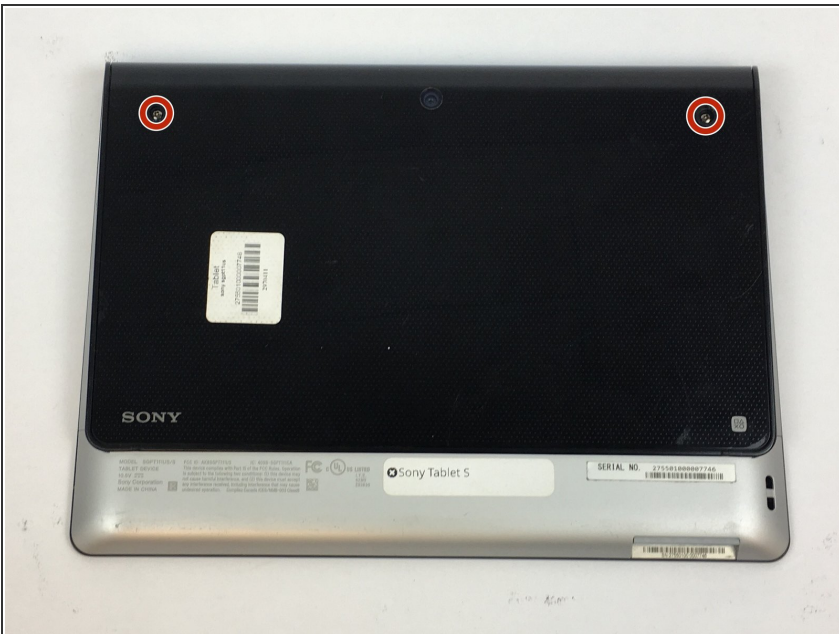
Step 1 — Battery



 Ensure that the device is completely turned off before attempting a repair. The battery may still have charge; use caution touching the components.

- Use a plastic opening tool to remove the two rubber grips on the back of the tablet.

Step 2



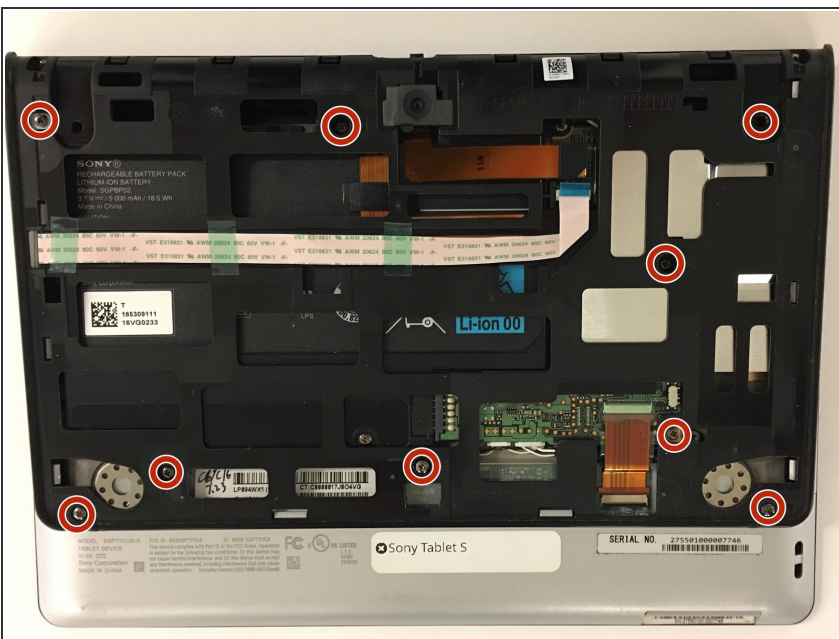
- Remove the two 10mm Phillips #0 screws located under the grips.

Step 3



- Flip the tablet over and use a plastic opening tool to pry the casing away from the top of the screen. Push the back cover off.
- ⓘ There is adhesive holding the case on located at the top of the screen. Push the casing toward the top of the screen while also wiggling it back and forth.

Step 4



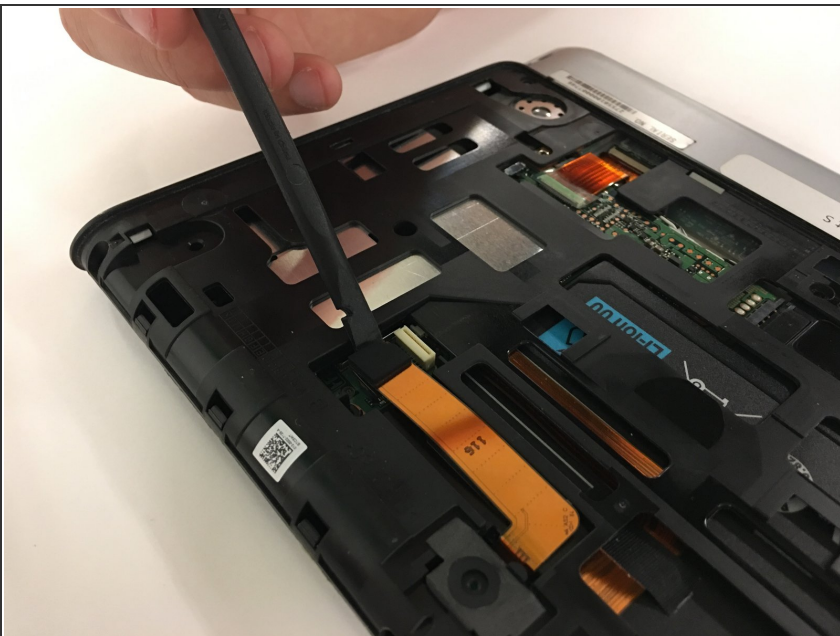
- Once the casing is off, remove the nine 5mm Phillips #0 screws shown.

Step 5



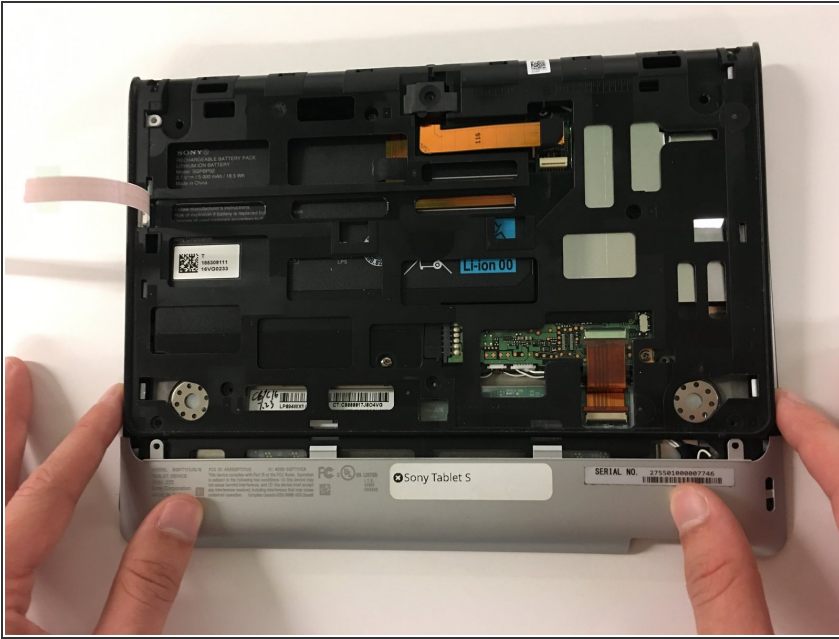
- Remove the white ribbon cable by pulling the blue tab straight up out of the socket and then peeling up the tape securing it to the tablet.
- ⚠ Use caution when removing the cable, as the socket is very fragile.

Step 6



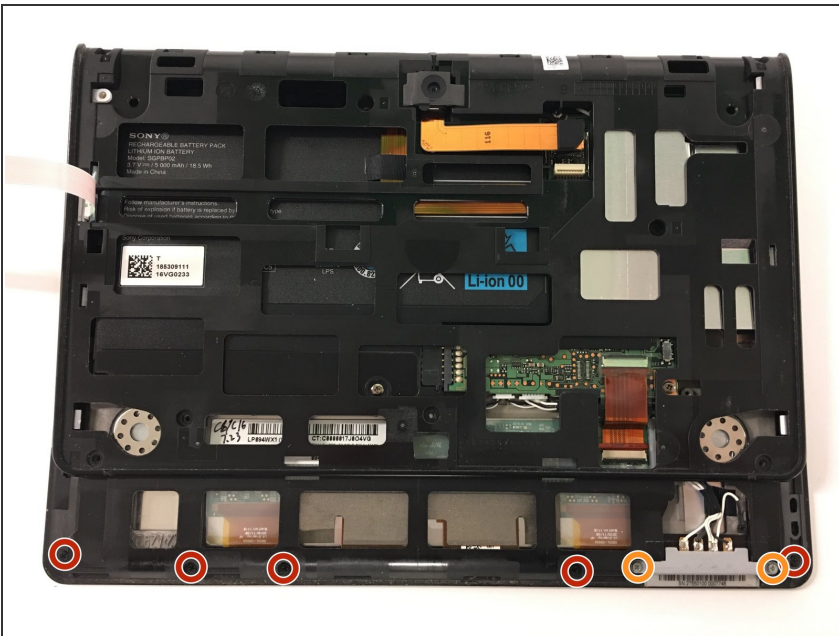
- Remove the copper ribbon cable by gently using a spudger to pry it up from its socket.
- ⚠ Use caution when removing the cable, as the socket is very fragile.

Step 7



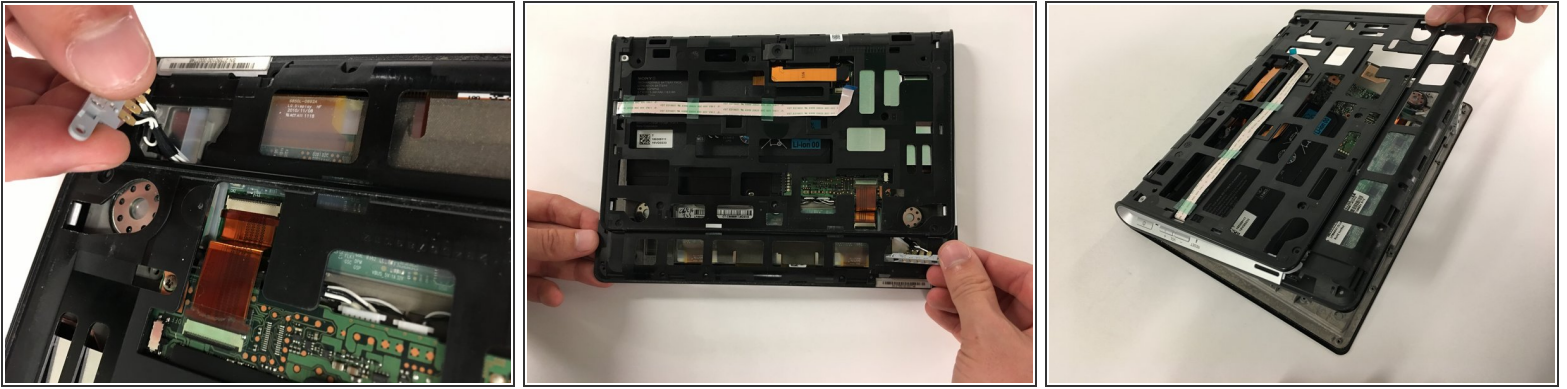
- Slide the bottom grey cover piece away from the body and remove it.
- ⓘ If this piece gives resistance, use a spudger on the sides of the tablet to pry it loose.

Step 8



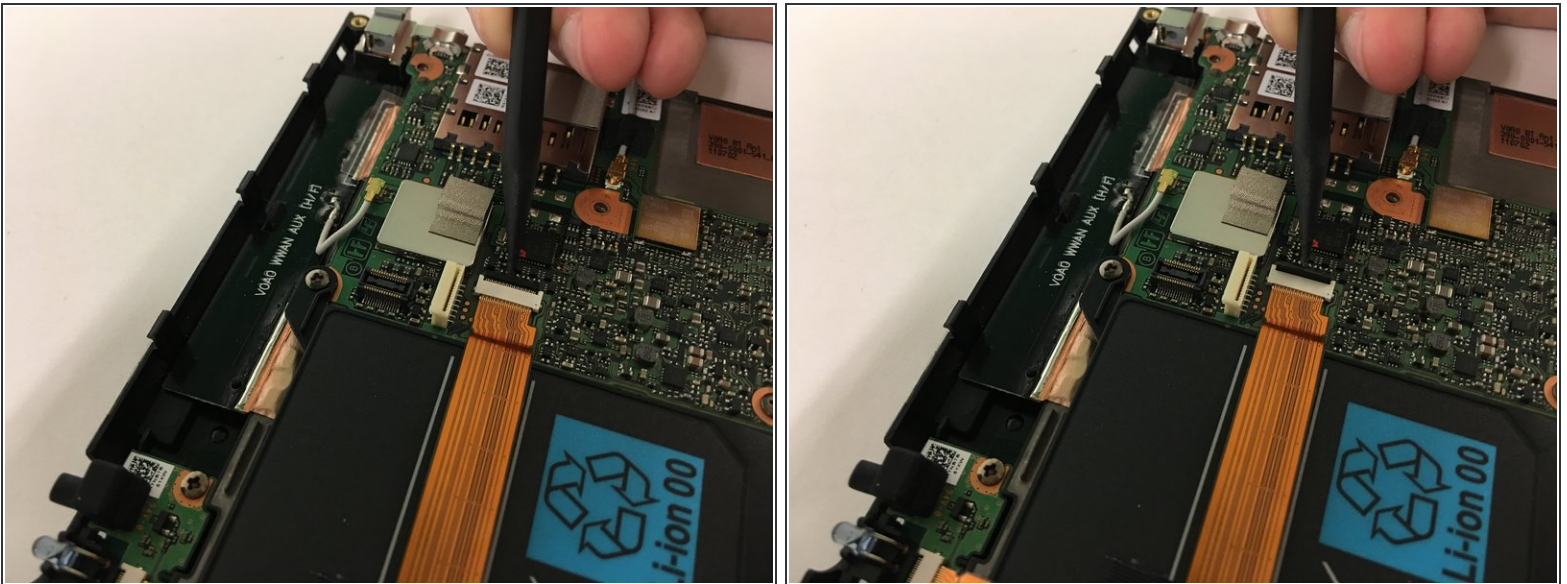
- Remove the five 4mm Phillips #000 screws.
- Remove the two 5mm Phillips #000 screws holding the charger in place.

Step 9



- Position the charging port at an angle so you can thread it through the opening as you remove the black plastic cover from the back of the tablet.
- ⓘ If the cover is not coming off easily, use a plastic opening tool to pry it loose from the edges of the screen.

Step 10



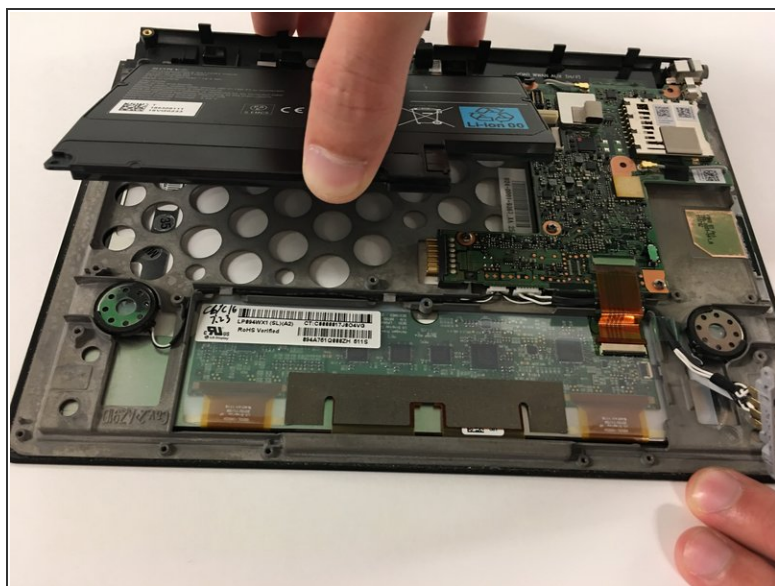
- Use a spudger to lift the zero insertion force connector latch for the long ribbon cable to the right of the battery, then pull the cable loose from its socket.
- ⚠ Use caution when removing the cable, as the socket is very fragile.

Step 11



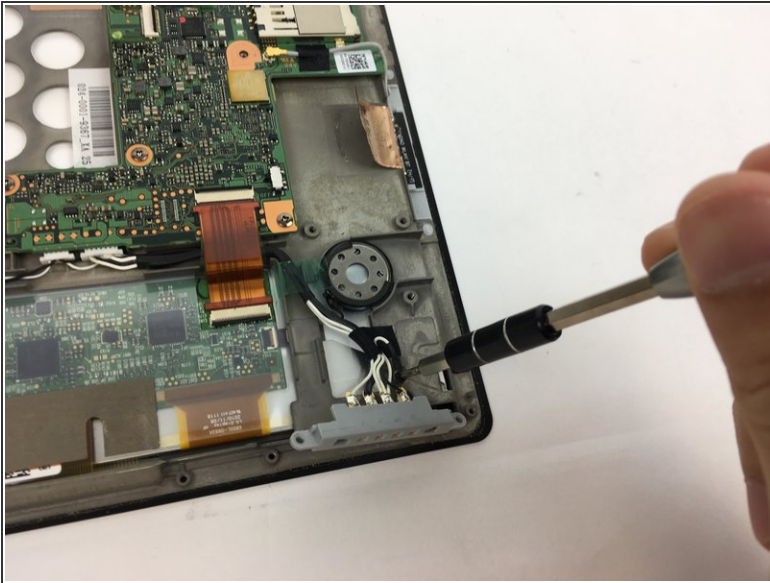
- Remove the three 5mm Phillips #0 screws securing the original battery.

Step 12



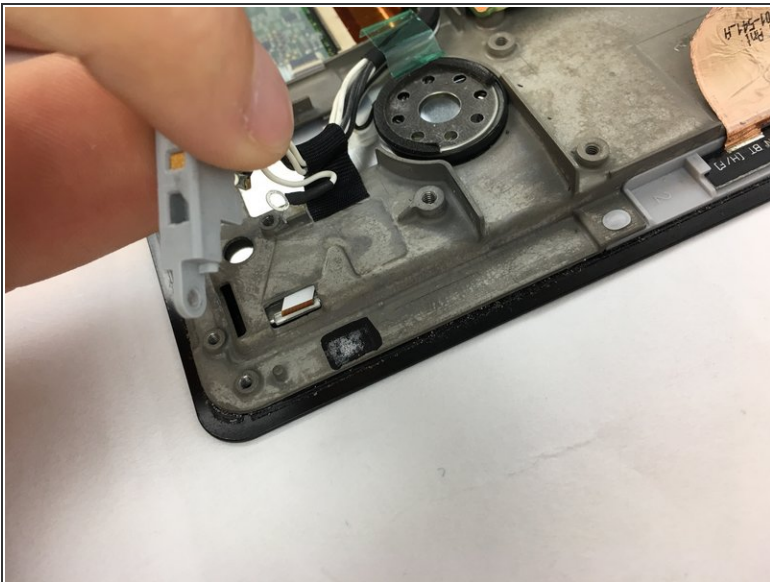
- Use the spudger to pop the battery loose and remove the battery.

Step 13 — Charging Connector



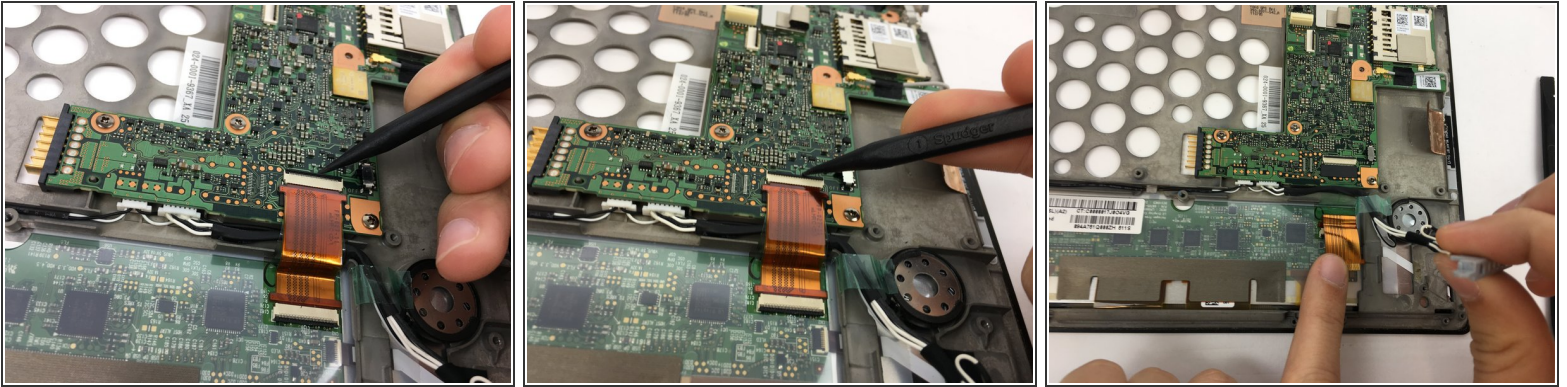
- Unscrew the single 5mm Phillips #000 screw.

Step 14



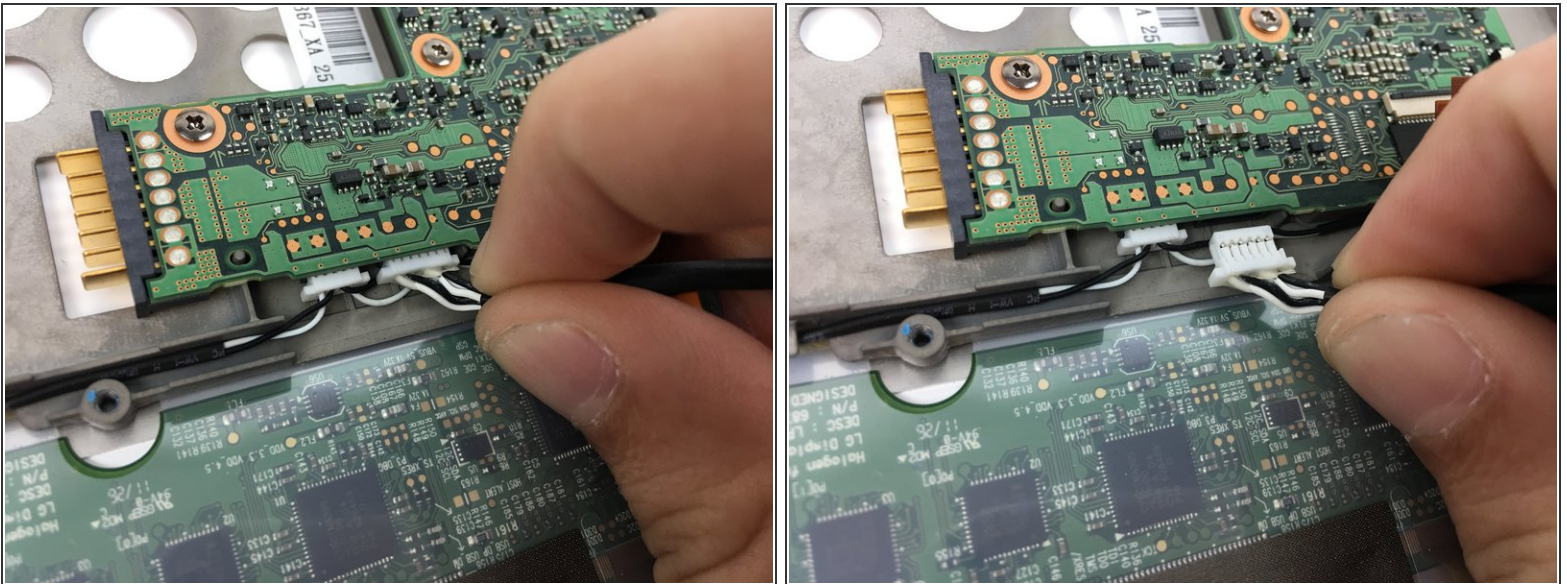
- Peel up the tape securing the assembly.

Step 15



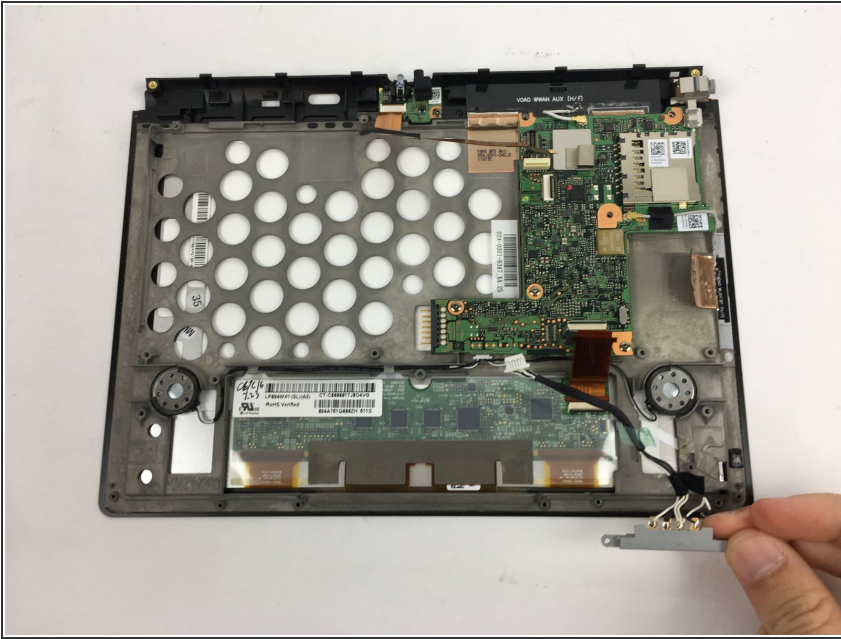
- Use a spudger to disengage the zero insertion force latch securing the copper ribbon cable.
- Pull away the ribbon cable.

Step 16



- Disconnect the charging assembly from the pin connector.
⚠ Pull on it very gently; the socket is very fragile.

Step 17



- Remove the assembly.

To reassemble your device, follow these instructions in reverse order.