



Sony Tablet S Rear Camera Replacement

This guide demonstrates how to replace a faulty rear-facing camera.

Written By: Austin Mann






TOOLS:

- [Phillips #0 Screwdriver](#) (1)
- [Spudger](#) (1)
- [iFixit Opening Tools](#) (1)

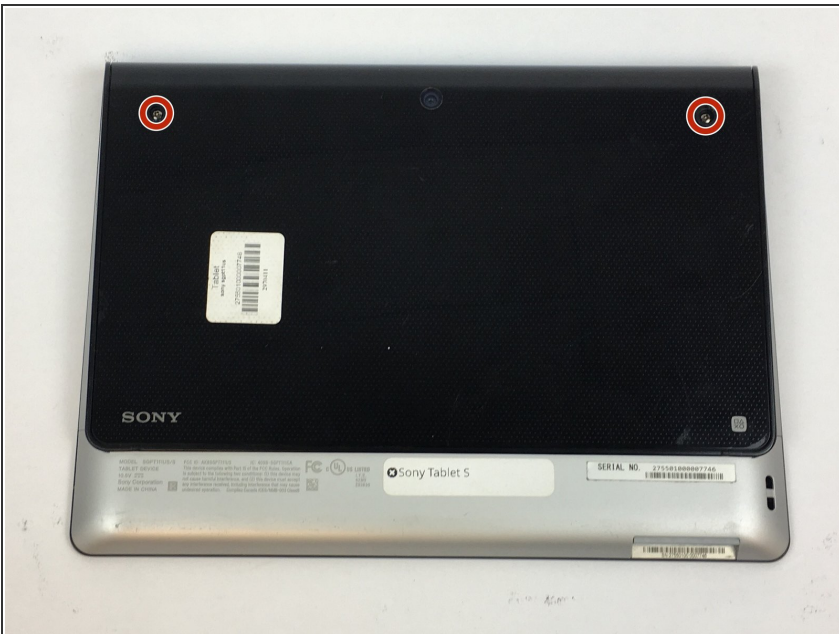
Step 1 — Rear Camera



 Ensure that the device is completely turned off before attempting a repair. The battery may still have charge; use caution touching the components.

- Use a plastic opening tool to remove the two rubber grips on the back of the tablet.

Step 2



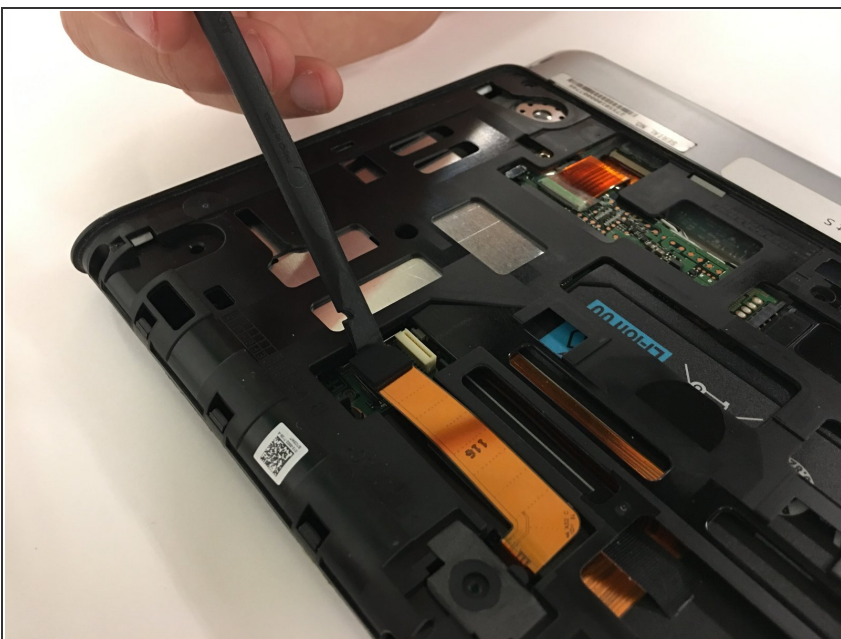
- Remove the two 10mm Phillips #0 screws located under the grips.

Step 3



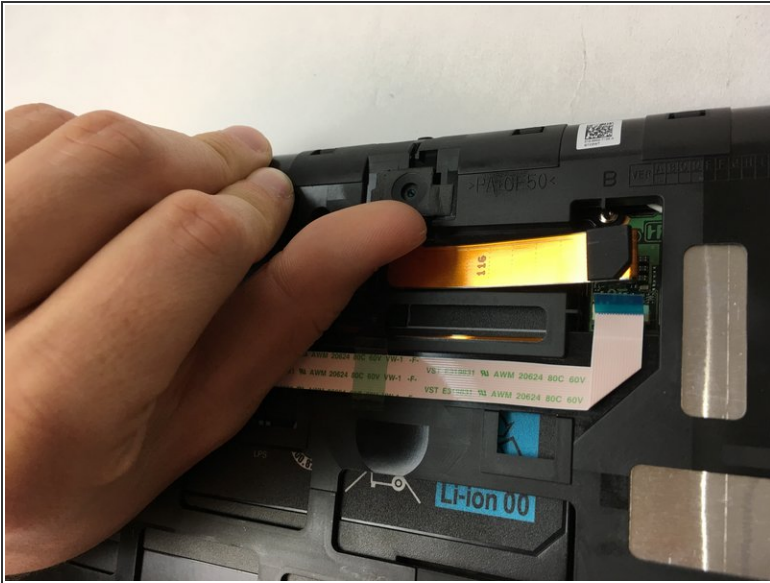
- Flip the tablet over and use a plastic opening tool to pry the casing away from the top of the screen. Push the back cover off.
- ⓘ There is adhesive holding the case on located at the top of the screen. Push the casing toward the top of the screen while also wiggling it back and forth.

Step 4



- Remove the copper ribbon cable by gently using a spudger to pry it up from its socket.
- ⚠ Use caution when removing the cable, as the socket is very fragile.

Step 5



- Use a finger or a spudger to pull on camera housing.

Step 6



- Remove the assembly from the plastic shielding.

To reassemble your device, follow these instructions in reverse order.