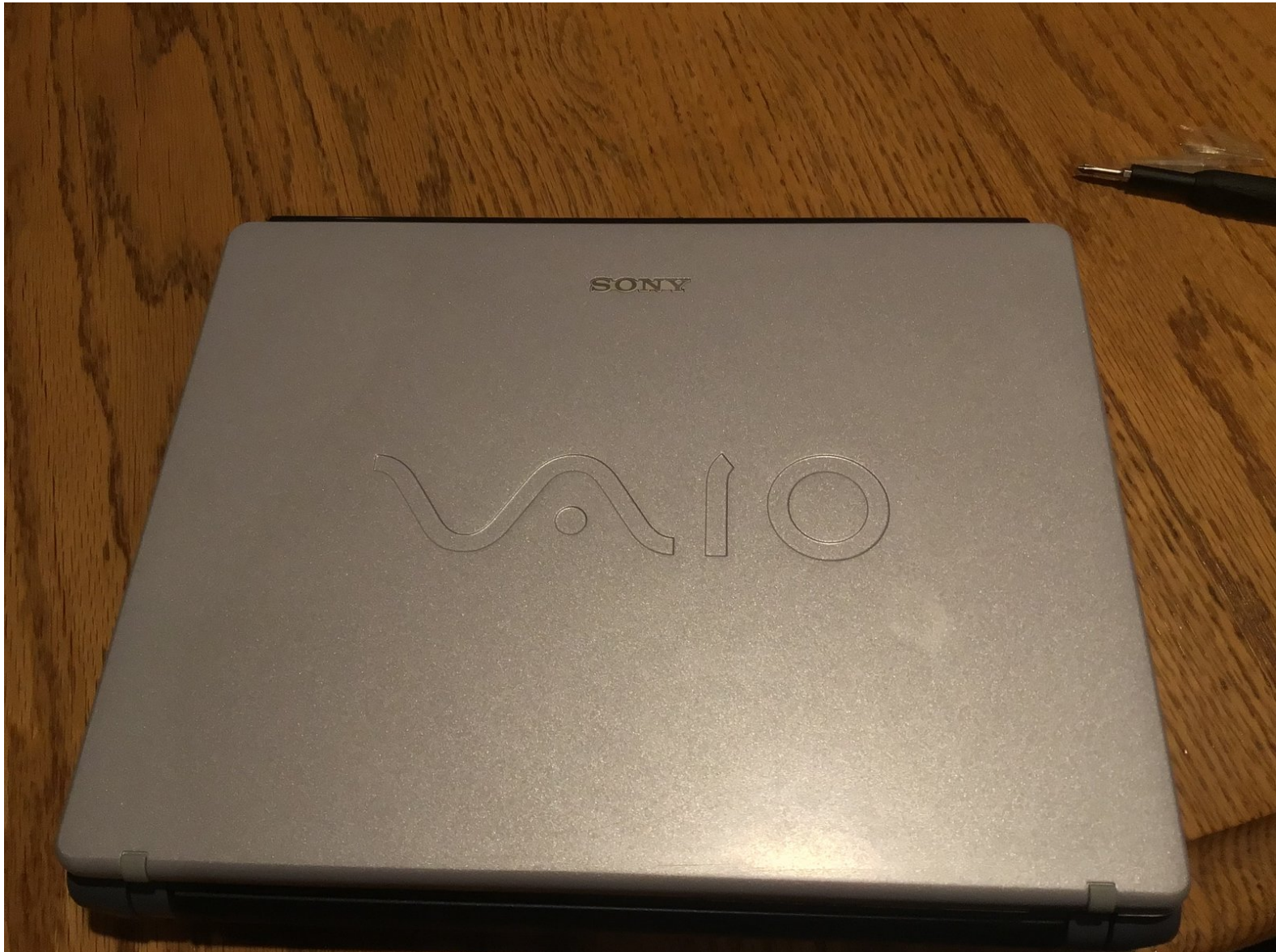




# Sony VAIO Notebook Computer PCG-432L Hard Drive Replacement

Replace an old or broken Hard Disk/Drive on an old Sony Notebook computer.

Written By: Aaron Cooke



## INTRODUCTION

This repair is very easy, with a small Phillips head screwdriver. I doubt anyone will actually ever need this guide because of how outdated and old this computer is but here you go! Don't be a dingus like me and disconnect the battery before doing this repair...



### TOOLS:

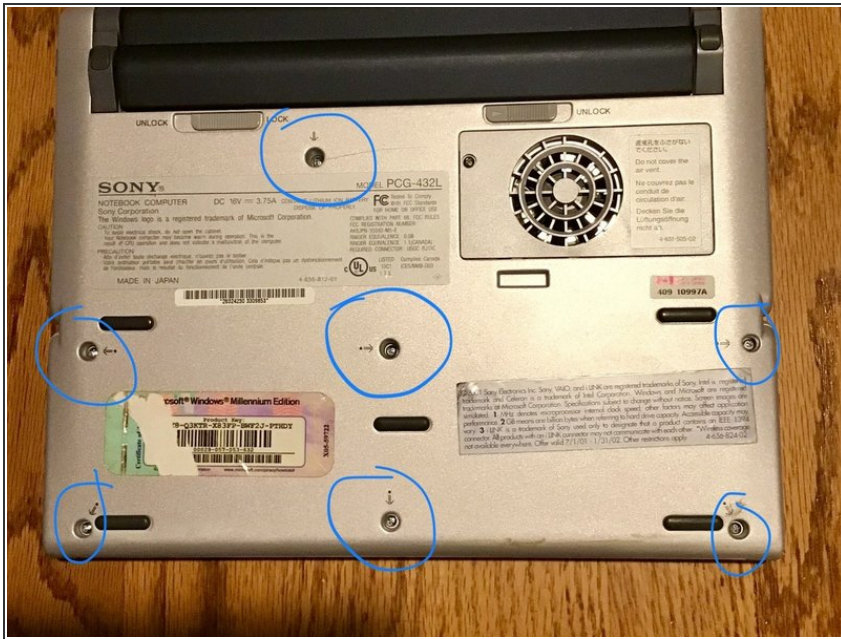
- [Phillips #0 Screwdriver](#) (1)
- [Jimmy](#) (1)



### PARTS:

- [Toshiba MK1016GAP Internal Hard Drive](#) (1)

## Step 1 — Opening up the Notebook Part 1



- Remove all circled screws with a Phillips 0 screwdriver. The screw by the top left of the fan does not need to be taken out. Place those screws in a safe place for later.

## Step 2 — Opening up the Notebook Part 2



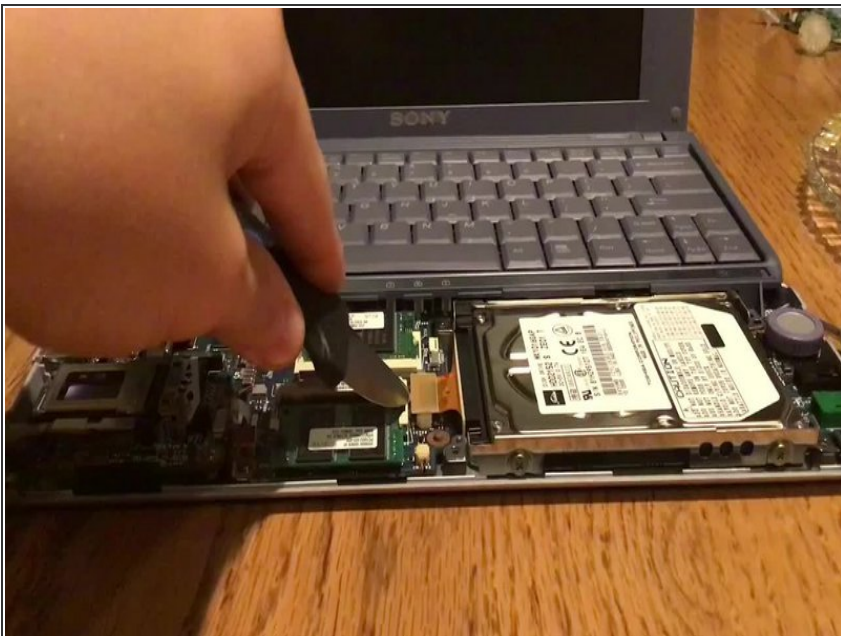
- Flip the notebook over, and then unlatch the display. Once that's done, lift up the trackpad and wrist-rest assembly, but be careful as to lift it up slowly as there is a ribbon cable to disconnect. Once you see the ribbon cable, disconnect it gently with your hands because using pliers can weaken the integrity of the cable. Put the assembly aside.

### Step 3 — Removing the Hard Drive part 1



- Unscrew the four screws holding the Hard Drive in place. I am missing some screws so I only have to unscrew one screw, but this may differ for you. Place these screws aside in a safe place for later on.

### Step 4 — Removing the Hard Drive part 2



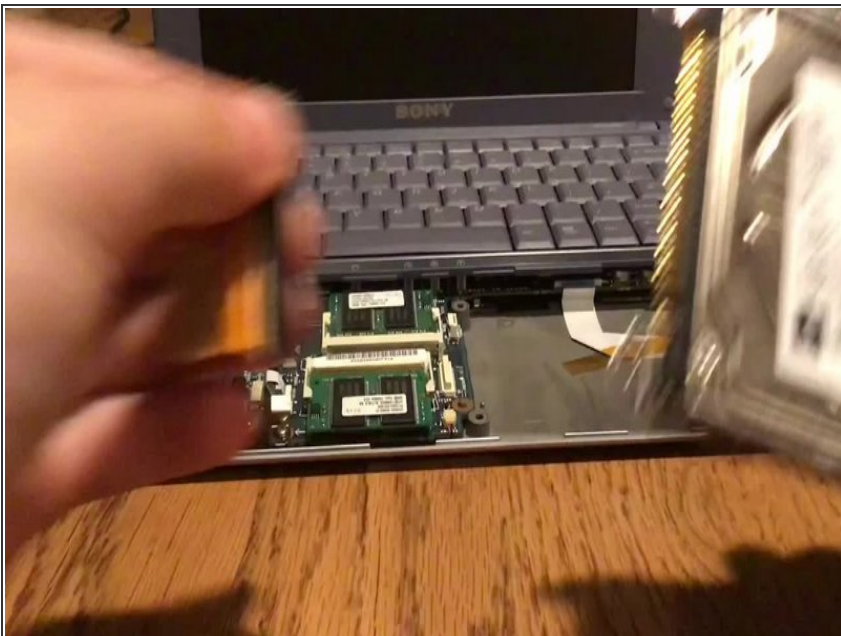
- Using a Jimmy (preferably) or a butter knife, disconnect the Hard Drive from the Notebook.

## Step 5 — Preparing the new Hard Drive Part 1



- Grab your old Hard Drive and disconnect the connector on top of the Hard Drive. This may require some force, as seen in the video, but contain the power as to not break the connector!

## Step 6 — Preparing the new Hard Drive part 2



- Get your new Hard Drive and put the connector onto the prongs of the new Hard Drive. You will see a little bit of a space between the last two prongs on the left but exclude them from the connector as the Hard Drive will not work properly if connected to those four prongs. Just do exactly what I do in the video.

## Step 7 — Connecting your new Hard Drive part 1



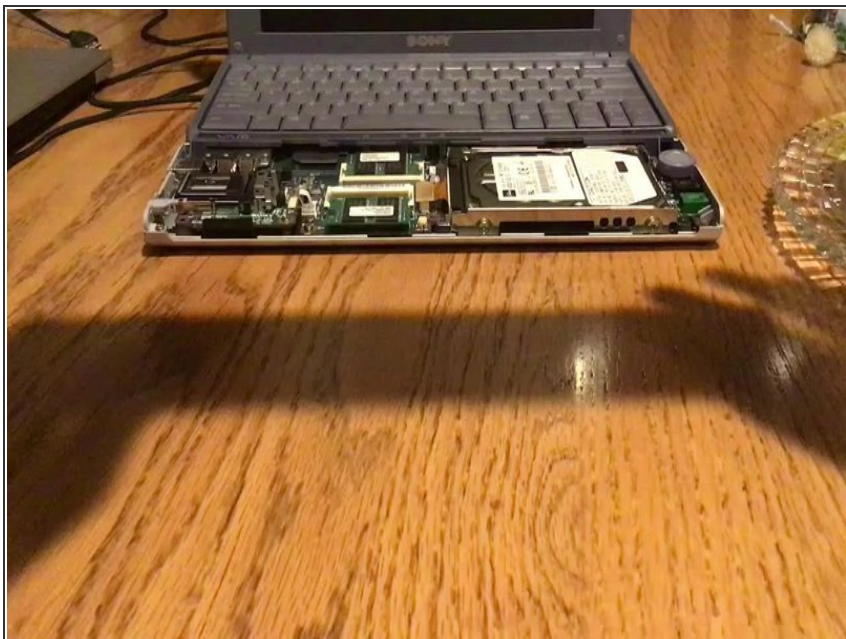
- Great work! Now let's reconnect the Hard Drive to the Notebook. Follow what I do in the video.

## Step 8 — Connecting your new Hard Drive part 2



- Screw the Hard Drive back into place with a Phillips 0 screwdriver and those screws you put aside earlier for the Hard Drive mount.

## Step 9 — Re-assembling the Trackpad and wrist-rest



- Reconnect the ribbon cable to the appropriate slot. Then just rest the trackpad and wrist-rest onto its proper spot and close the computer.

To reassemble your device, follow step 1 in reverse order. Hope you enjoyed my first guide!