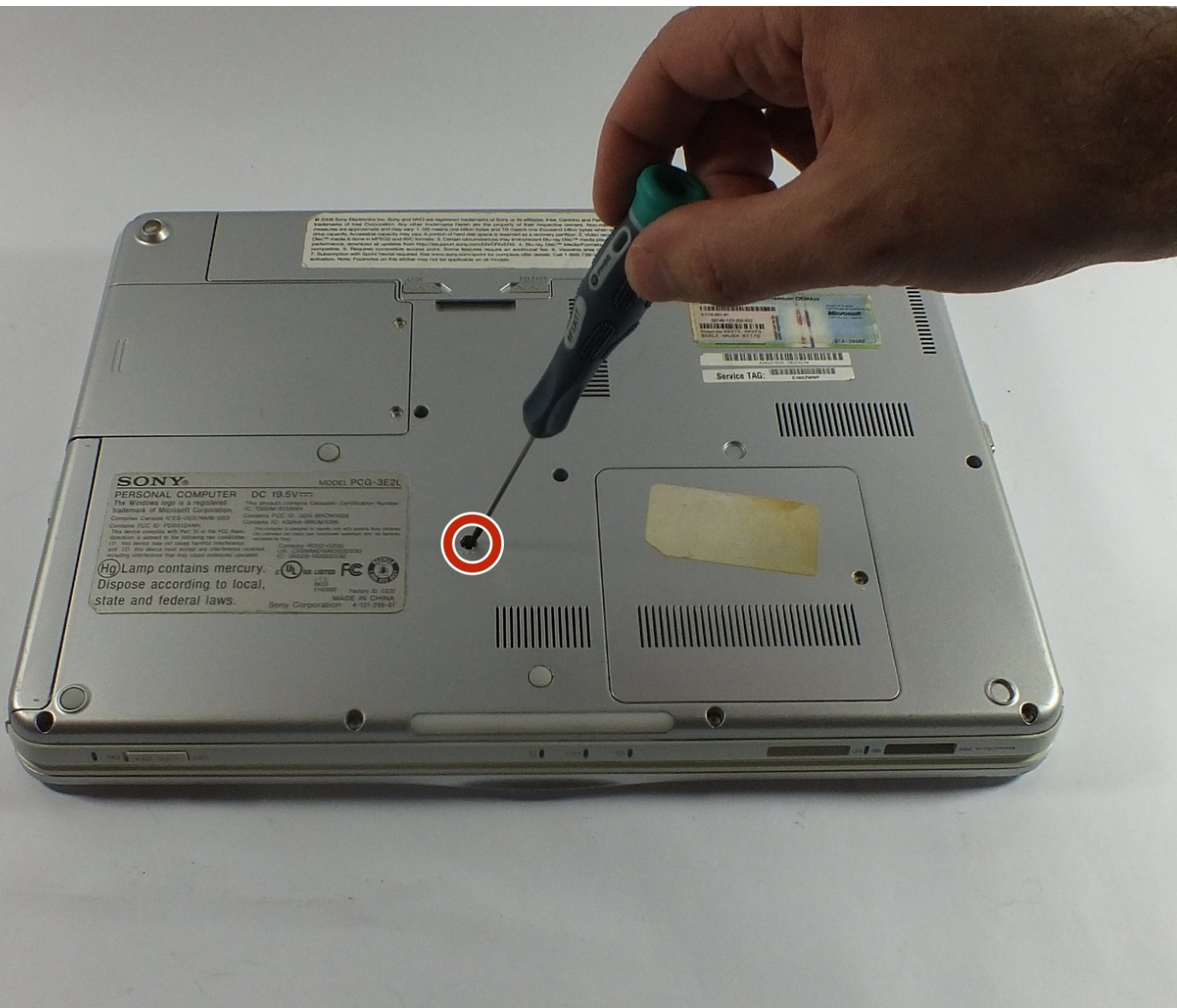




Sony VAIO PCG-3E2L CD Drive Replacement

The purpose of this guide is to help the reader replace the CD Drive of the device.

Written By: Chengyang Chen



INTRODUCTION

This guide will aid readers to replace CD Drive of the device when the CD Drive is not functioning properly.



TOOLS:

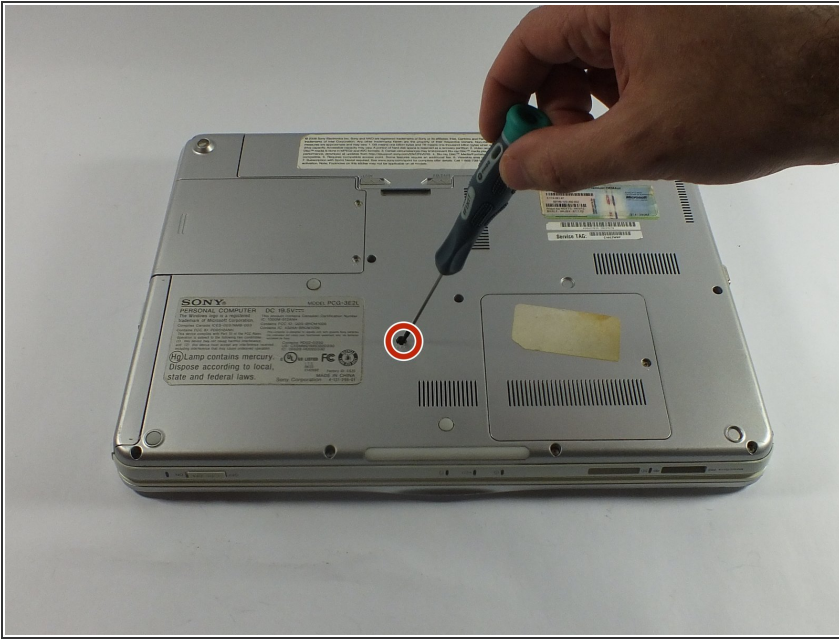
- [Phillips #00 Screwdriver](#) (1)



PARTS:

- [Panasonic UJ880A Tray Load DVD RW Drive](#) (1)

Step 1 — CD drive



- Using a #00 Phillips screwdriver, remove the screw

Step 2



- Hold the edge of the CD drive and drag it out.

To reassemble your device, follow these instructions in reverse order.