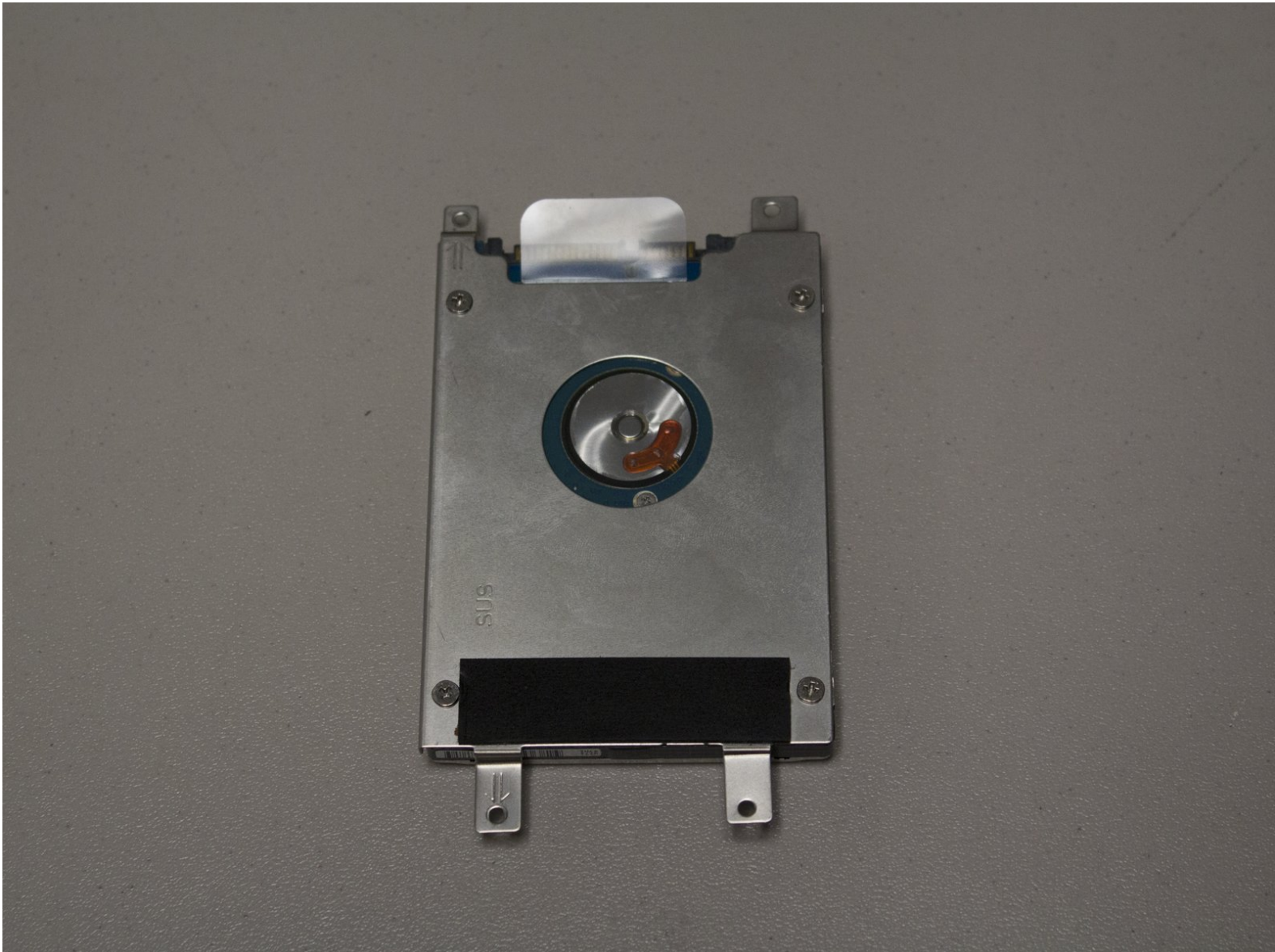




Sony VAIO SVE14AJ16L Hard Drive Replacement

Replacement steps for a hard disk drive in a Sony VAIO SVE14AJ16L Laptop.

Written By: Dustin Smith



INTRODUCTION

Replacement steps for a hard disk drive in a Sony VAIO SVE14AJ16L Laptop.



TOOLS:

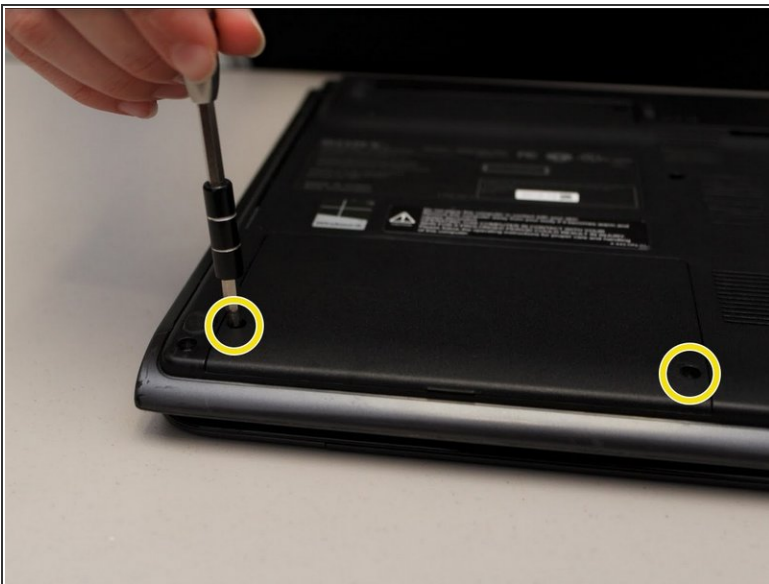
- [Phillips #0 Screwdriver](#) (1)
-

Step 1 — Hard Drive



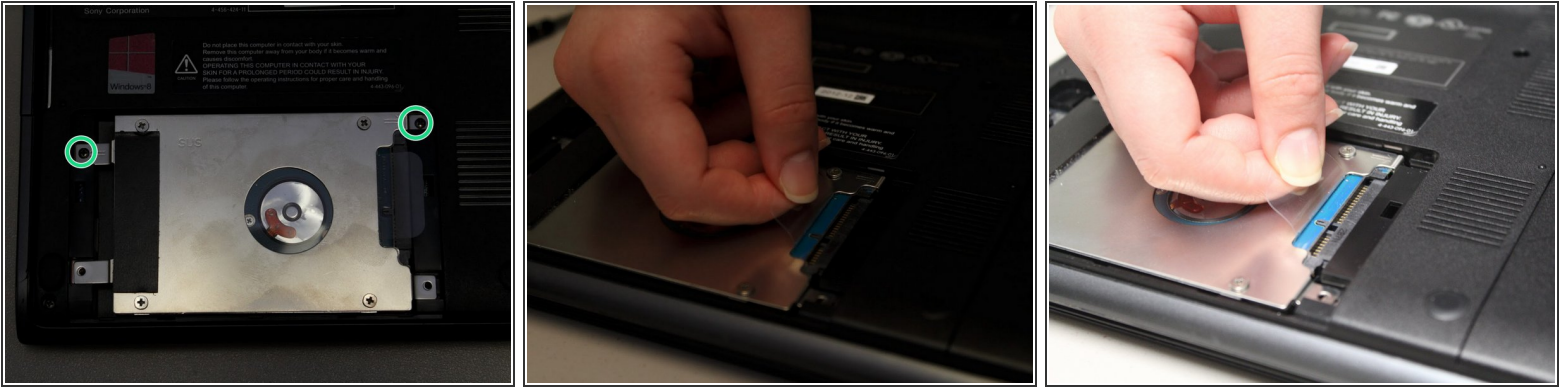
- ⚠ Turn off your laptop before starting.
- Turn the closed laptop upside down so that the bottom is facing you.

Step 2



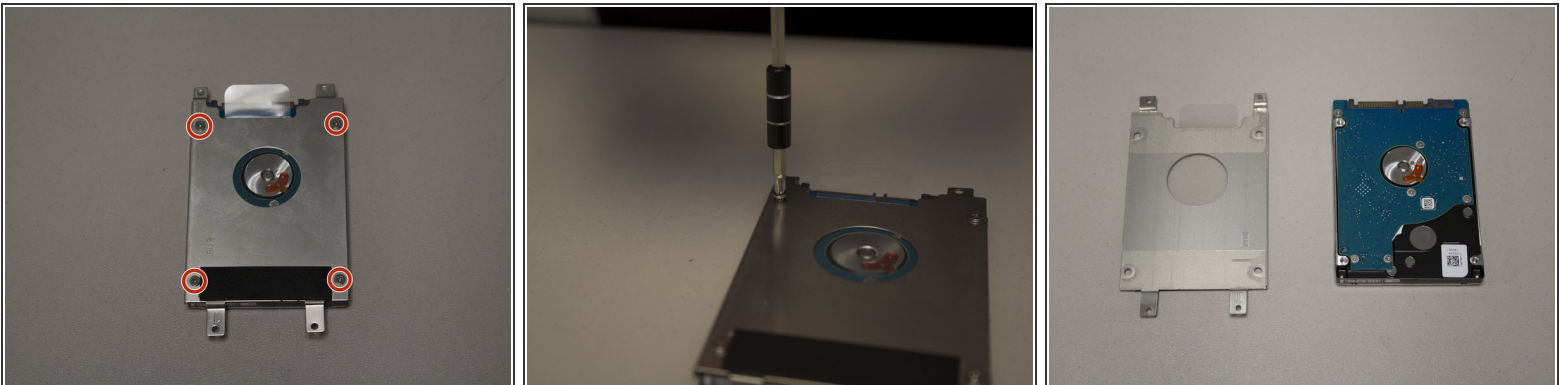
- Locate and remove the two Phillips #0 screws on the hard drive cover with the screw driver.
- Then remove the hard drive cover.

Step 3



- Locate and remove the two Phillips #0 screws holding the hard drive in place
- Using the plastic tab, slide the hard drive out away from the main portion of the laptop.
- Lift the hard drive out of the laptop using the tab.

Step 4



- Finally, remove the 4 Phillips #0 screws holding the hard drive bracket to the hard drive.

To reassemble your device, follow these instructions in reverse order.