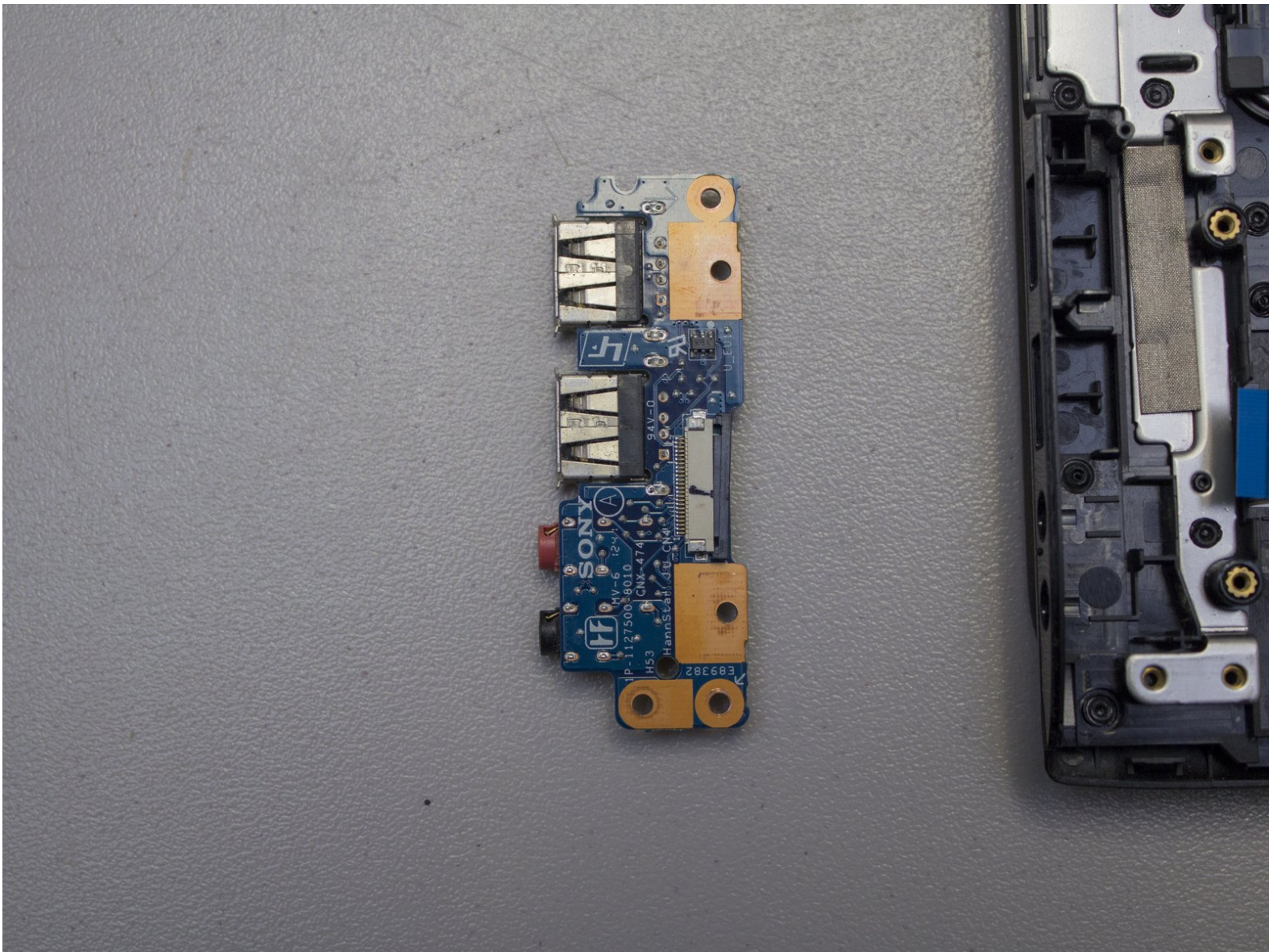




Sony VAIO SVE14AJ16L I/O Card Replacement

This guide will help you replace the I/O card that contains two USB ports and the audio in and out ports.

Written By: Carlos Landa





TOOLS:

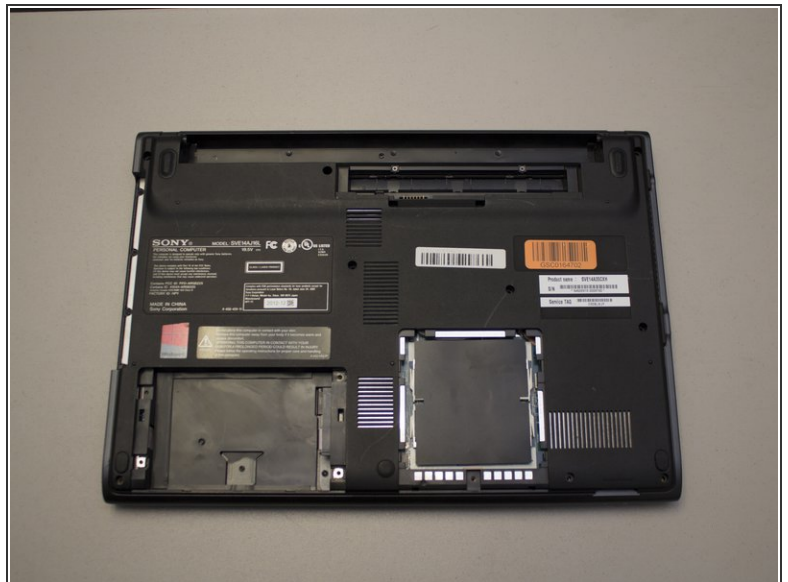
- [iFixit Opening Tools](#) (1)
 - [Magnetic Project Mat](#) (1)
 - [Phillips #0 Screwdriver](#) (1)
-

Step 1 — I/O Card



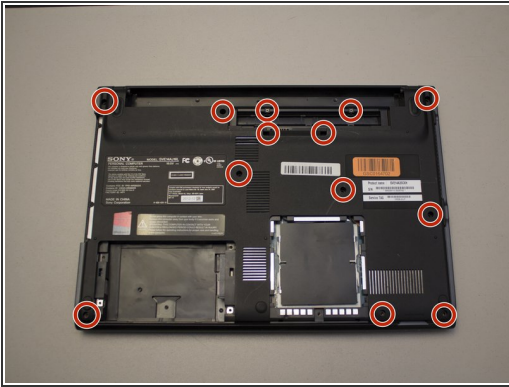
- Flip the laptop to have the bottom facing towards you.

Step 2



- Remove the battery, hard drive cover, and RAM cover.
 - Then unscrew the two Philips screws to remove the hard drive from the computer
- ⓘ If you're unsure how to remove the covers for the hard drive, battery, and RAM, refer to the guides on replacing these components.

Step 3

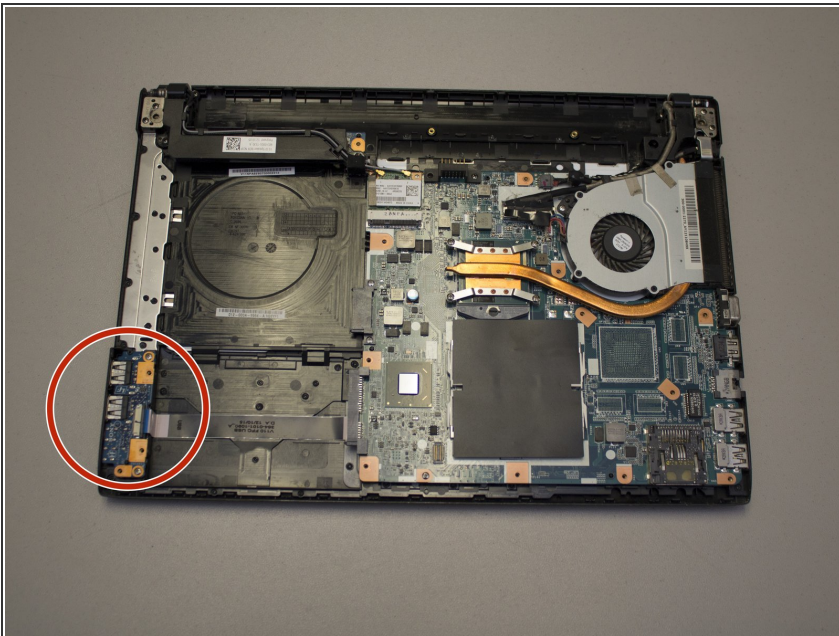


- Remove the 13 Phillips #0 screws.

⚠ Make sure you have an organization system to remember which screws go where, as the majority are different sizes! The [iFixit Magnetic Project Mat](#) is an awesome tool for this exact reason!

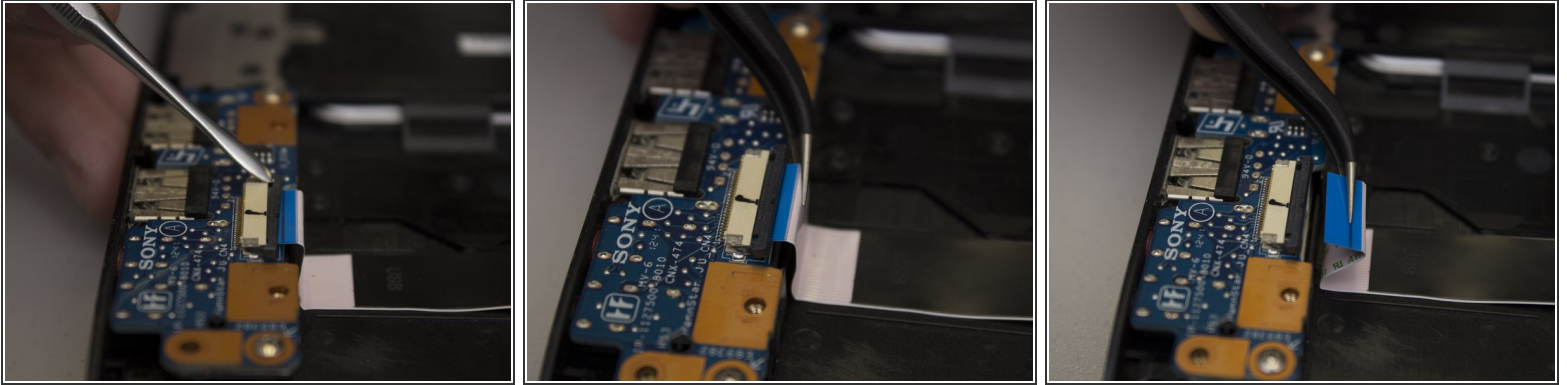
- Carefully pry apart the clipped-on bottom panel of the laptop to expose the internals.

Step 4



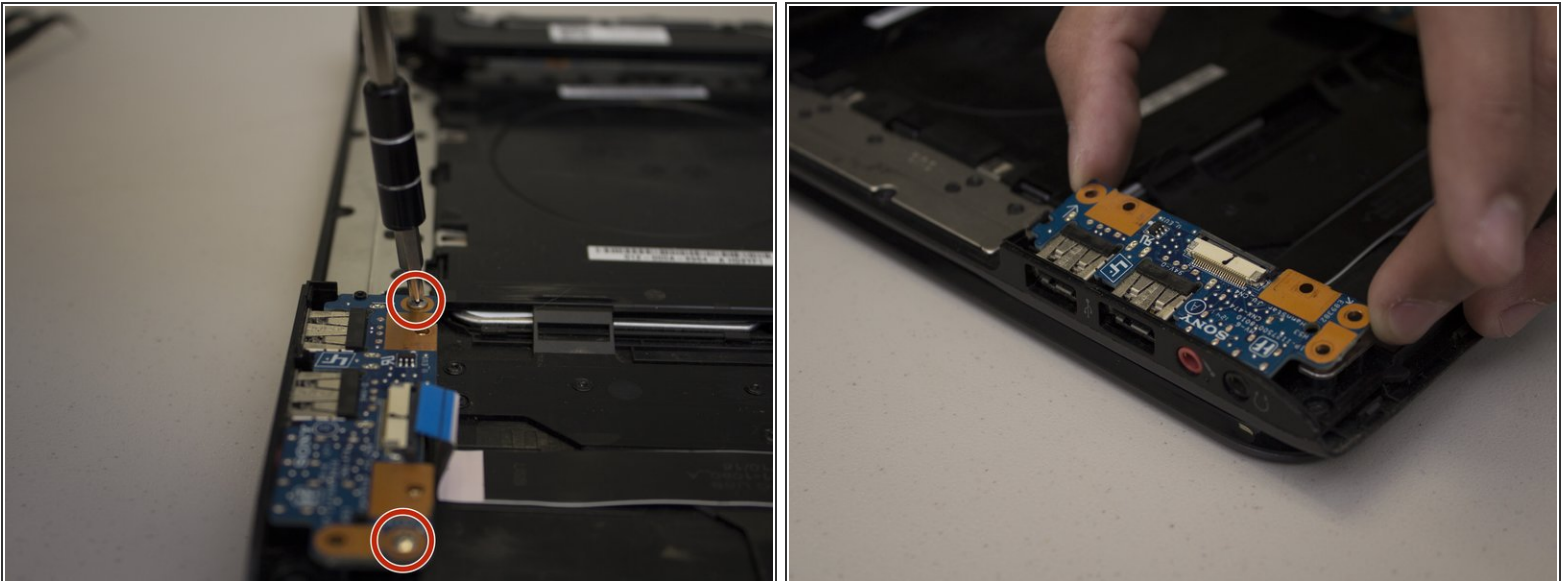
- Locate the I/O card in the bottom left hand (or upper right hand depending on which direction you have the laptop) of the case.

Step 5



- Carefully slide the black retainer bar towards the ribbon cable until parallel.
- Then carefully pull the ribbon cable out of it's socket.

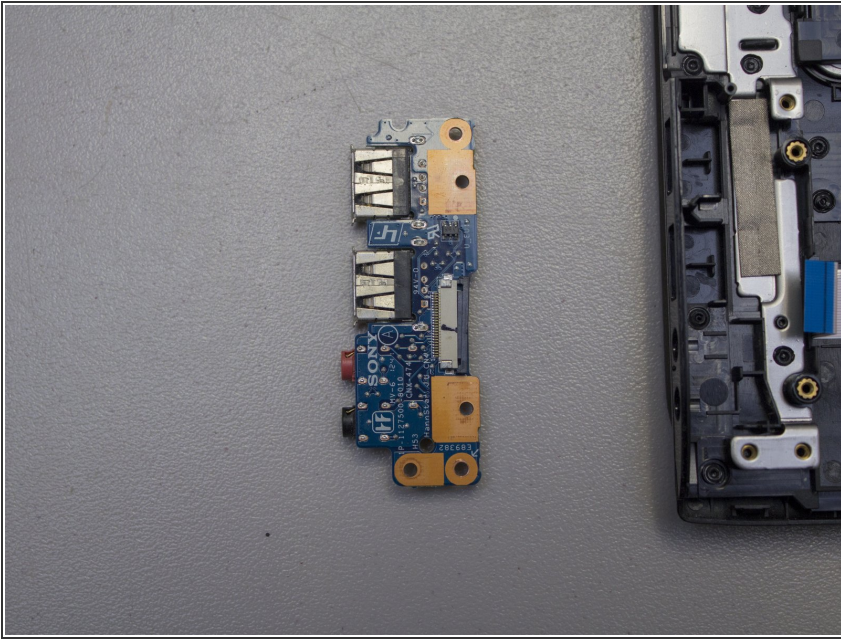
Step 6



- Unscrew the two Phillips #0 screws on the corners of the I/O card.
- Lift the edge of the card up and away from the laptop, then pull away from the side ports.

⚠ Don't forget which screw goes where!

Step 7



- There you go! You successfully removed the I/O board of your Sony E-Series Laptop.

To put Humpty Dumpty together again, follow these instructions in the reverse order.