



Sony VAIO SVE14AJ16L Wireless Network Card Replacement

The replacement of the Sony VAIO SVE14AJ16L bgn wireless card in the Sony VAIO SVE14AJ16L.

Written By: Alex Pham



This document was generated on 2020-02-16 08:39:12 AM (MST).

INTRODUCTION

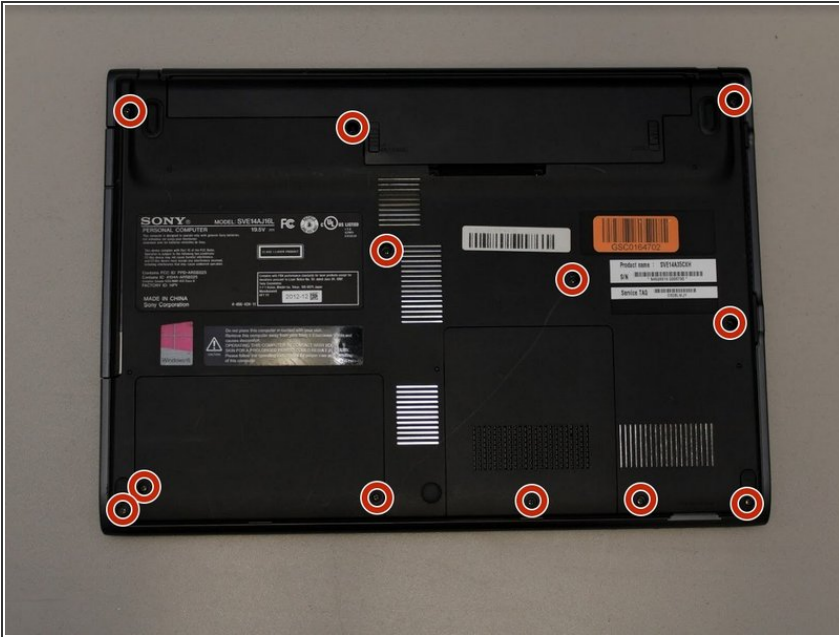
If you find that your laptop no longer connects to a Wi-Fi connection. It may be time to replace the wireless network card.



TOOLS:

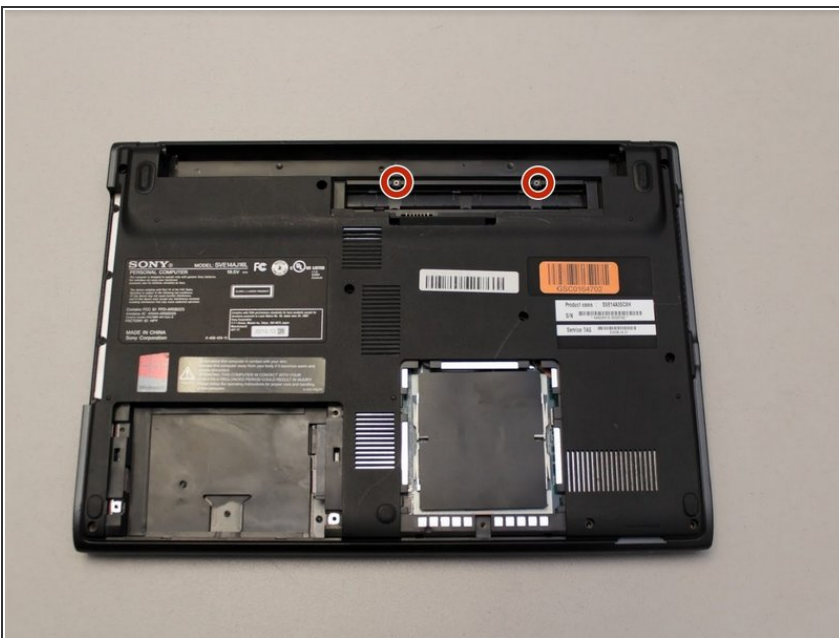
- [Phillips #0 Screwdriver](#) (1)
 - [iFixit Opening Tools](#) (1)
-

Step 1 — Wireless Network Card



- Remove the twelve 5 mm Phillips #0 screws from the bottom of the laptop.

Step 2



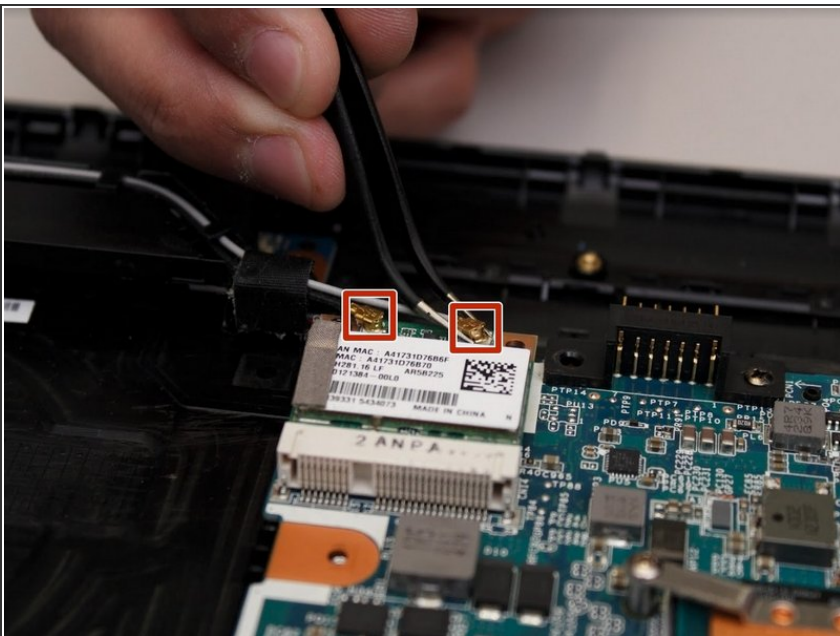
- Remove the two 5 mm Phillips #0 screws from the bottom of the laptop.

Step 3



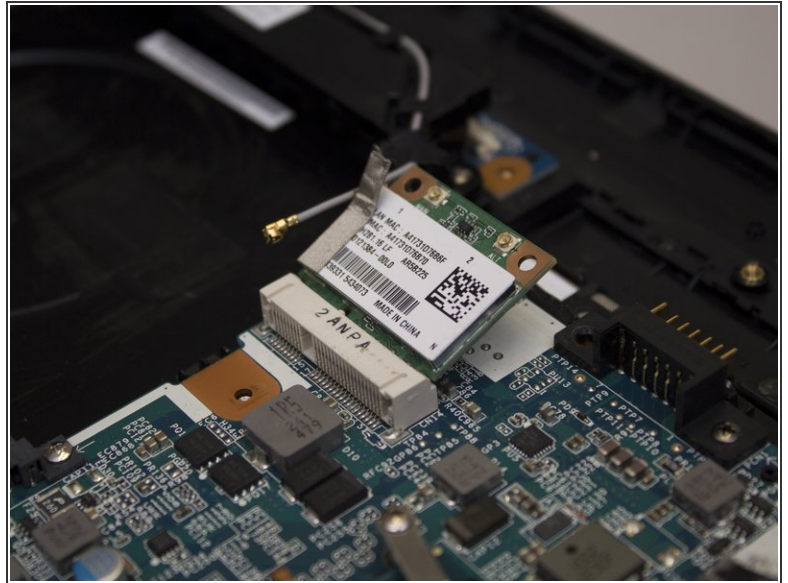
- Using the plastic prying tools, go around the edge of the bottom of the laptop to release the cover.

Step 4



- Disconnect the black and white antenna wires from the wifi card.
- ⓘ Make sure to lift the plugs straight up from the sockets and not from an angle.

Step 5



- Remove the 3 mm Phillips #0 screw from the wifi card.
- Remove the card from its socket.

To reassemble your device, follow these instructions in reverse order.