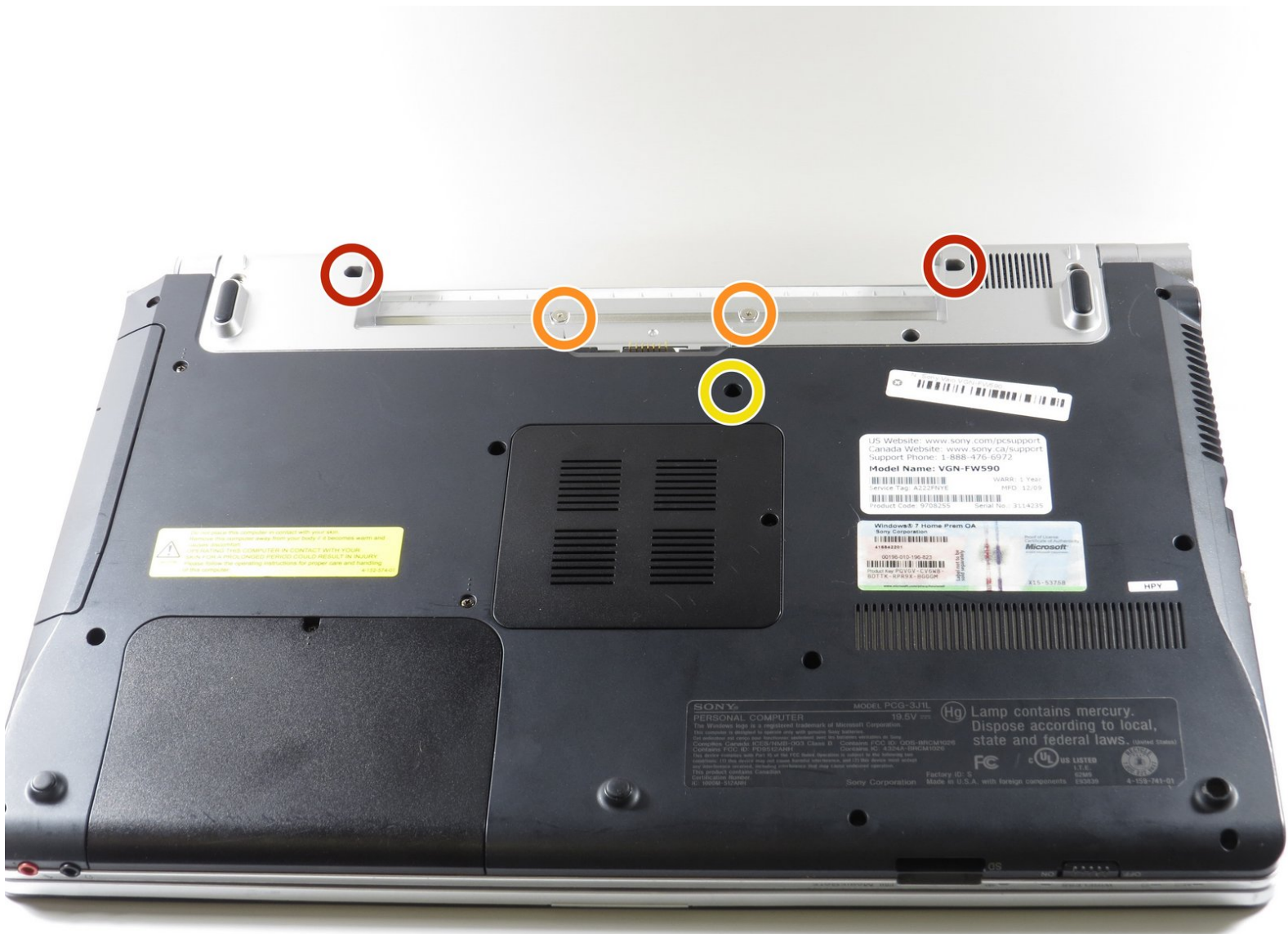




# Sony VAIO VGN-FW 590 Keyboard Replacement

This guide will show you how to replace the keyboard on your device.

Written By: Jennifer Pache



## INTRODUCTION

This guide is for users whose VAIO VGN-FW590 keyboard no longer functions. Before starting please be aware that keyboards warp easily during the removal/replacement process. If you wish to reuse/replace your keyboard be very careful and perform each step gently.



### TOOLS:

- [Phillips #0 Screwdriver](#) (1)



### PARTS:

- [Vaio VGN-FW590 Replacement Keyboard](#) (1)

## Step 1 — Battery



- Turn the computer off, close the LCD screen, and insure the computer is unplugged from any outlet.
- Turn the computer over so that the bottom of the computer is facing up and the "screen swivels" (DC in port and On button) are facing away from you.
- Locate the battery pack between the two "screen swivels" at the top of the computer back.

## Step 2



- Locate two sliding release switches below the battery pack.
- Slide the "Lock" release to the right toward the center of the computer.
- Slide the "Release" switch to the left, toward the center of the computer. It must be held in place because it is spring loaded.

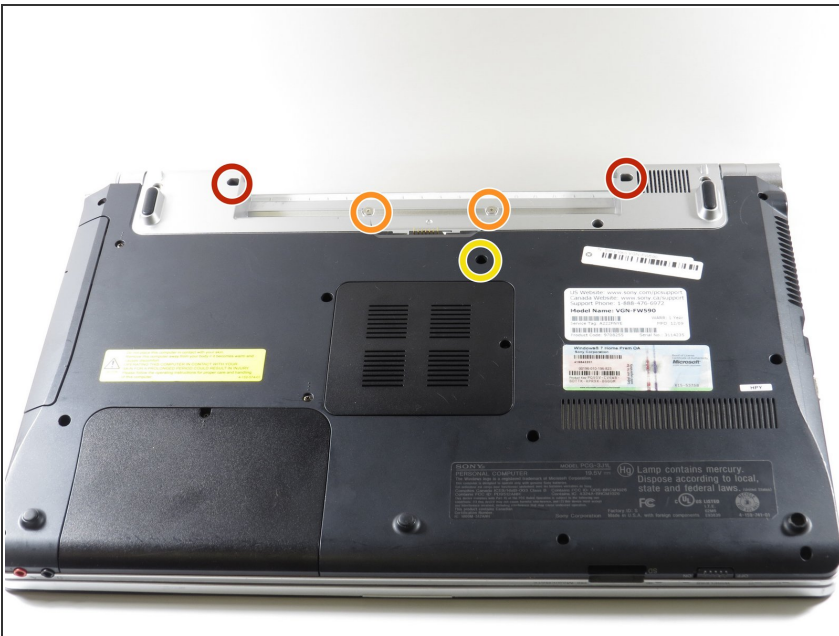


### Step 3



- While holding the "Release" switch toward the center of the computer, press on the raised portion of the battery pack away from you. The battery pack will pop up.
- Once the battery pack has popped out of its compartment, lift it out of the computer.

### Step 4 — Keyboard



- Remove the circled screws using the Phillips #0 screwdriver.
  - The outer two screws are 7.7mm
  - The center two screws are 2.5mm
  - The bottom screw is 7.6mm

## Step 5



- Open the computer

## Step 6




- Remove the audio panel above the keyboard.
- Lift one corner gently with a flat tool or fingernail.
- Pull the rest of the panel gently out by hand.

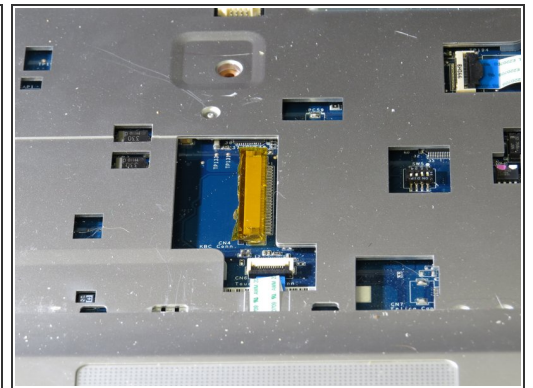
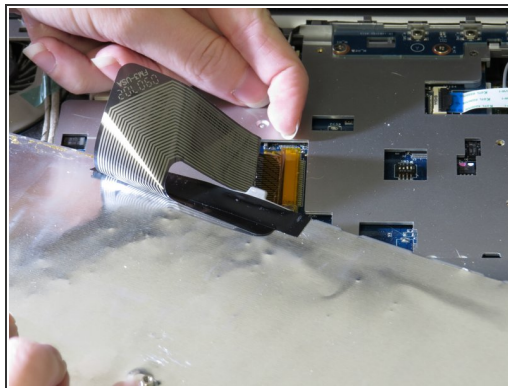
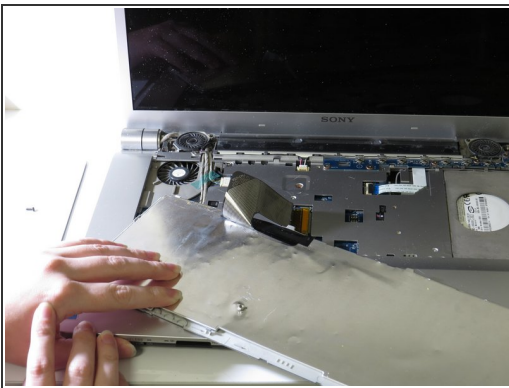
## Step 7




- Lift the keyboard gently, starting with one of the top corners.
- Pull keyboard gently from body of computer to prevent warping or breakage.

 **Caution** Do not remove completely.

## Step 8



- Locate the connector ribbon behind the keyboard.
- Gently pull the ribbon from the locking device. It may take a few tries.

 **Caution** Do not tear the ribbon.

To reassemble your device, follow these instructions in reverse order.