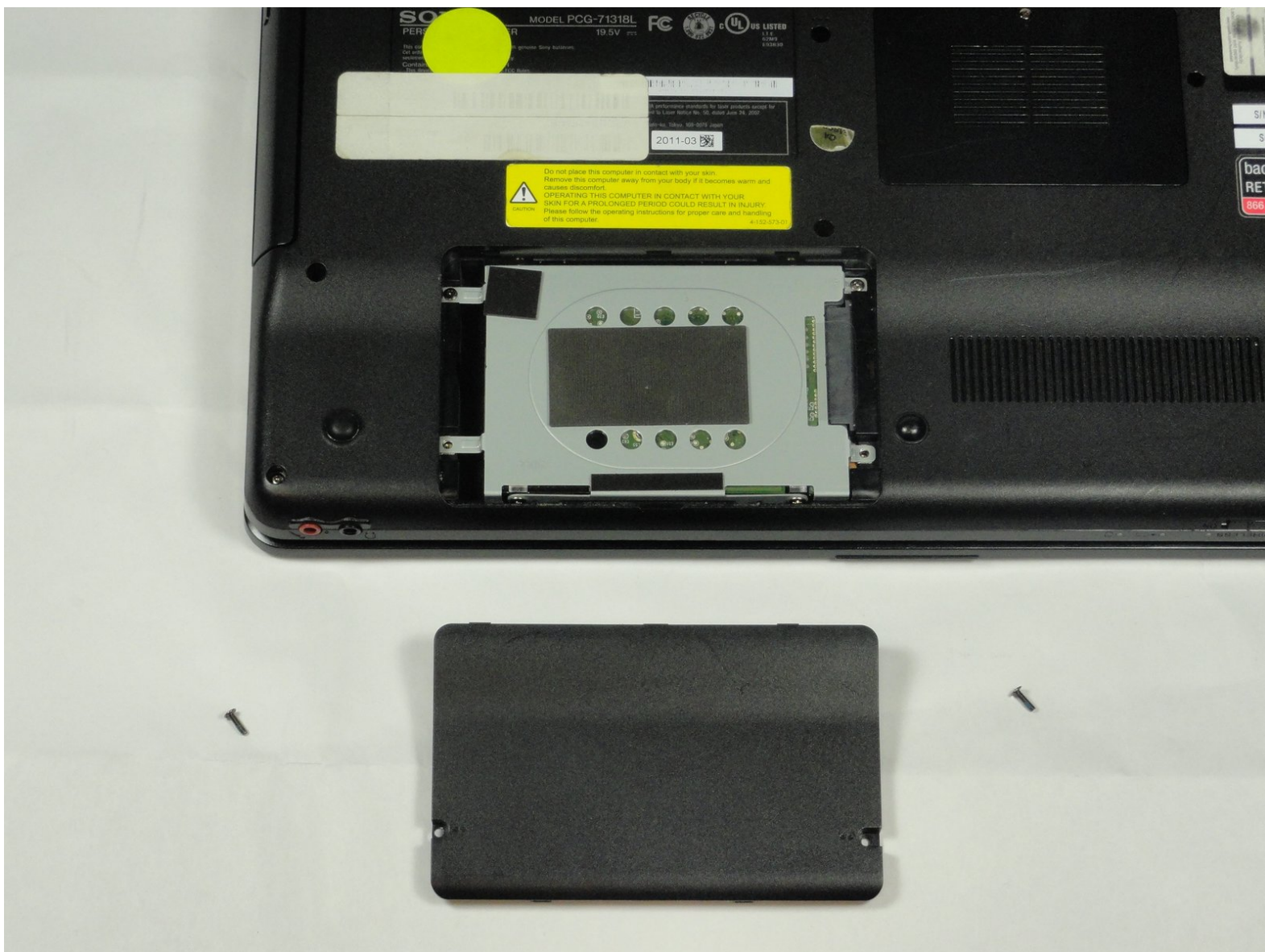




Sony VAIO VPC-EB33FM Hard Drive Replacement

The purpose of this installation guide is to provide instructions on removing and installing the hard drive of the Sony VAIO VPC-EB33FM laptop.

Written By: Christian



INTRODUCTION

This guide will inform readers on how to safely uninstall the hard drive of the Sony VAIO VPC-EB33FM laptop using your hands and a Phillips #00 screwdriver.



TOOLS:

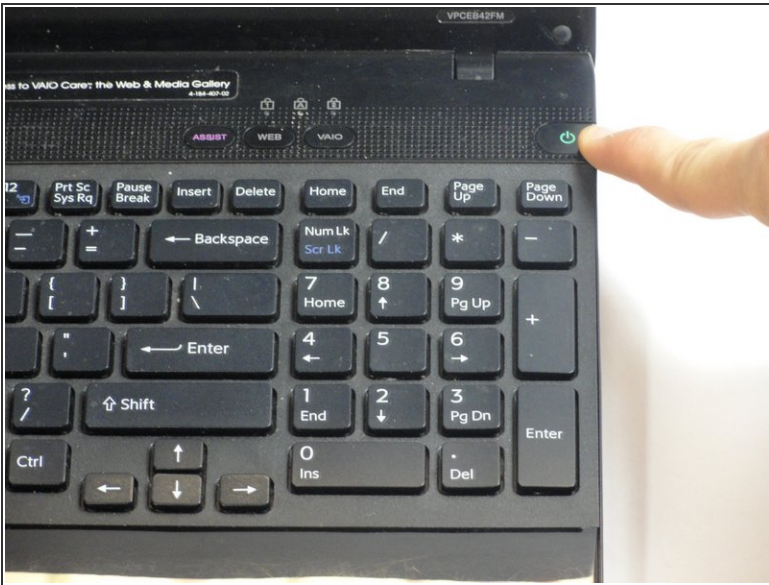
- [Phillips #00 Screwdriver](#) (1)



PARTS:

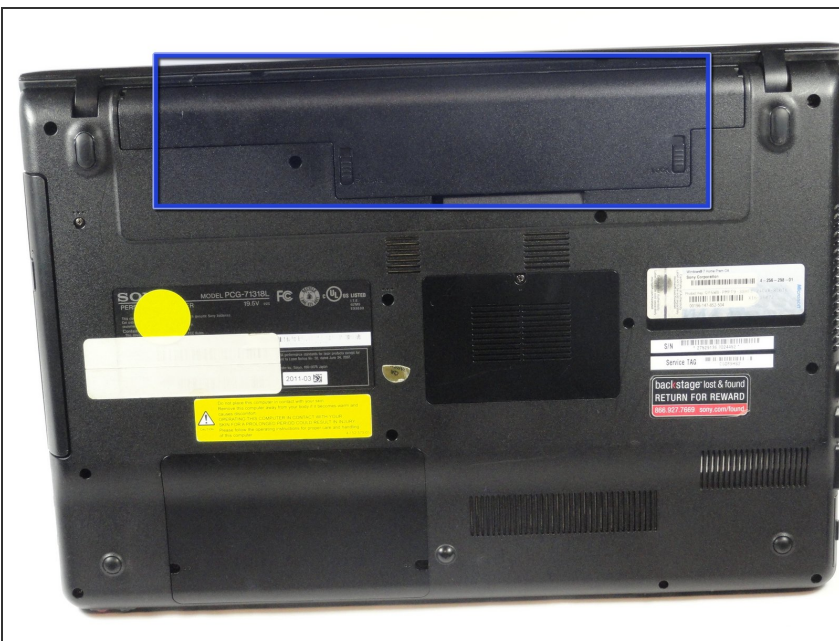
- [500 GB 5400 RPM Western Digital - Scorpio Blue SATA-II Hard Drive](#) (1)

Step 1 — Battery



- If the laptop isn't turned off, then do so by holding down the power button.
- Turn the laptop onto its backside.

Step 2



- Locate the battery below the screen attachment.
- ⓘ The battery is shaped as a long rectangle with rounded edges.

Step 3



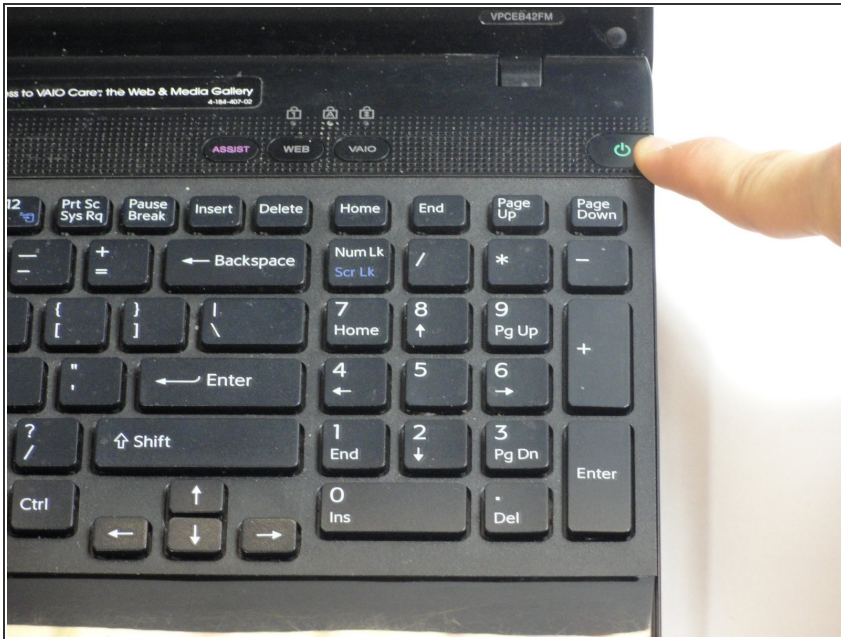
- Press into the release button while holding the unlock button in position.

Step 4



- Lift the battery out at the notch while holding the release button.

Step 5 — Hard Drive



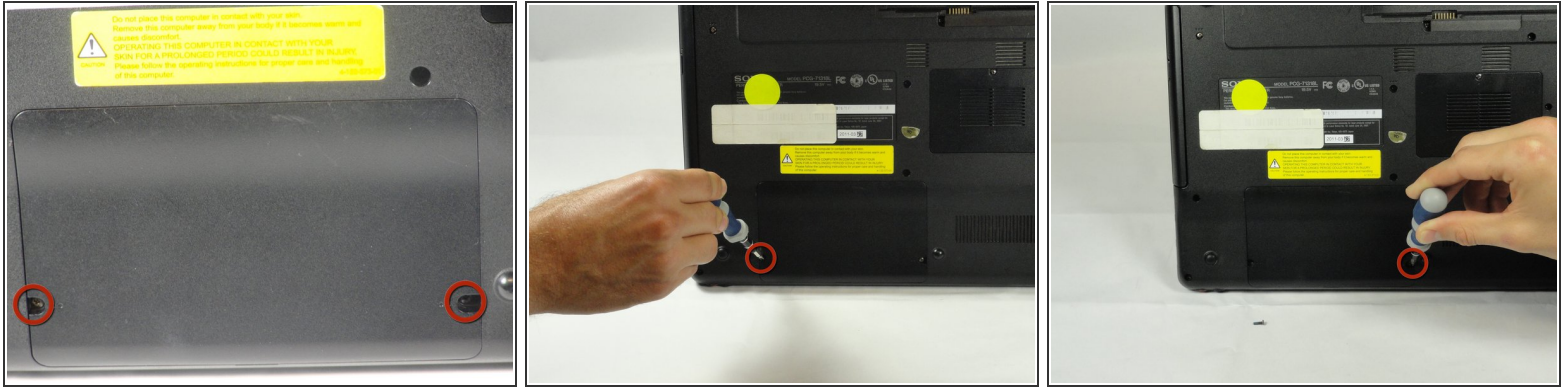
- Remove all charge from the laptop by holding down the power button for at least 5 seconds.

Step 6



- Turn laptop onto its backside and locate the hard drive cover panel.

Step 7



- Use a Phillips #00 screwdriver to remove the two 7.75-mm cover screws on the bottom corners of the panel.



Step 8



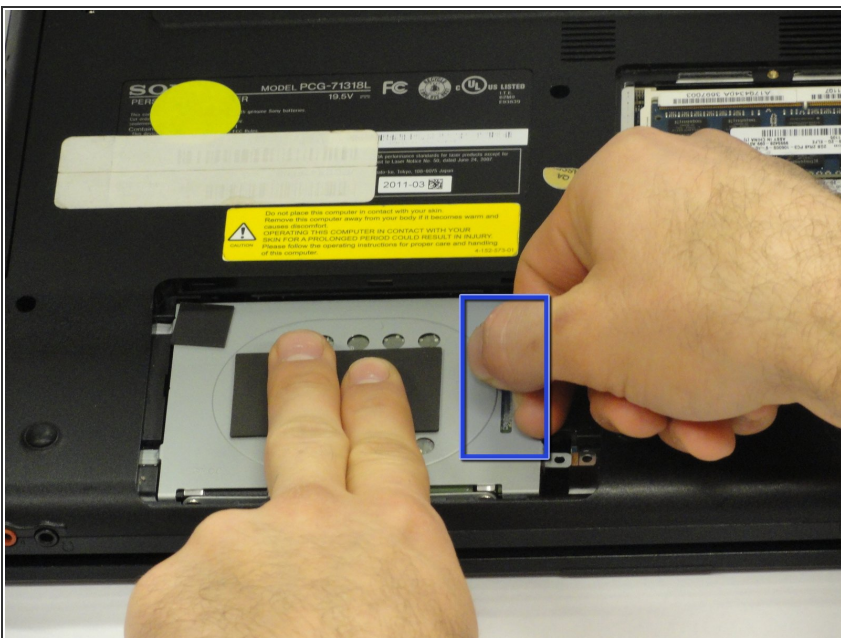
- Use a finger/fingernail to grip the notch at the bottom of the panel to lift it off.
- ⓘ You may need to use your other hand to safely remove the panel.
- ⓘ You can also use a spudger for this step





Step 9



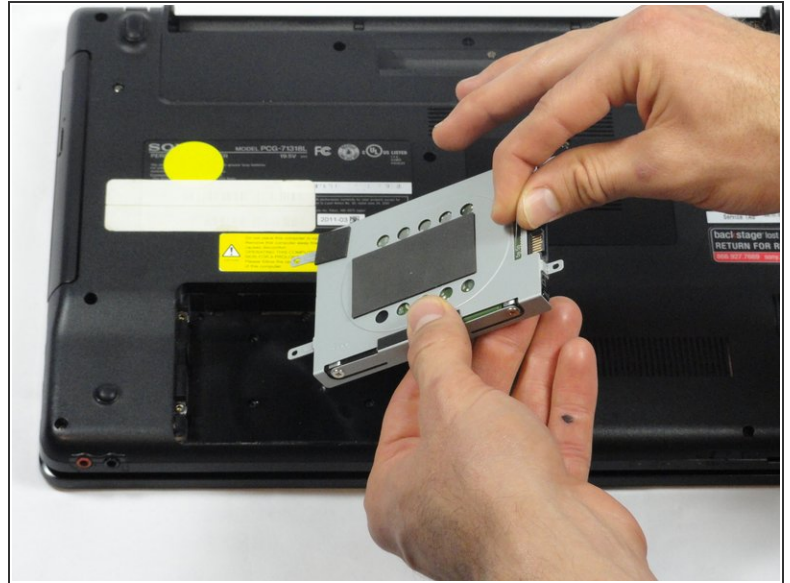
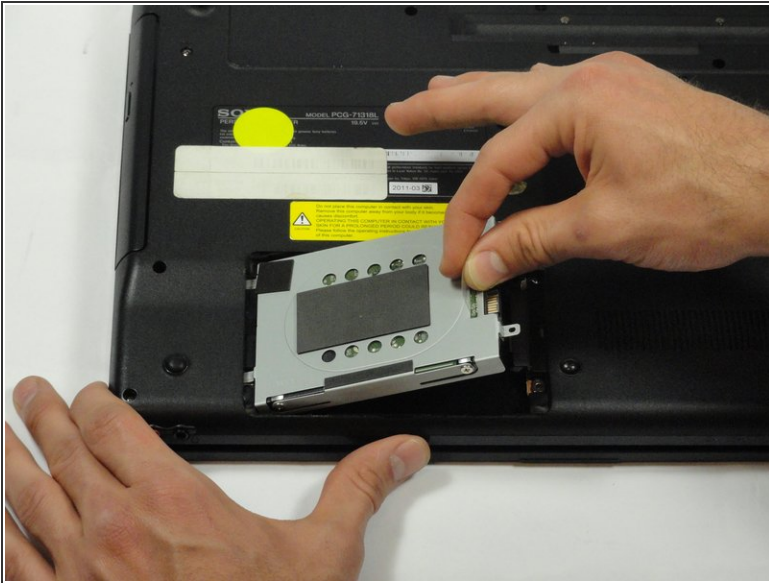
-  The hard drive should now be exposed.
-  Remove the two remaining 7.75-mm screws using the Phillips #00 screwdriver.

Step 10



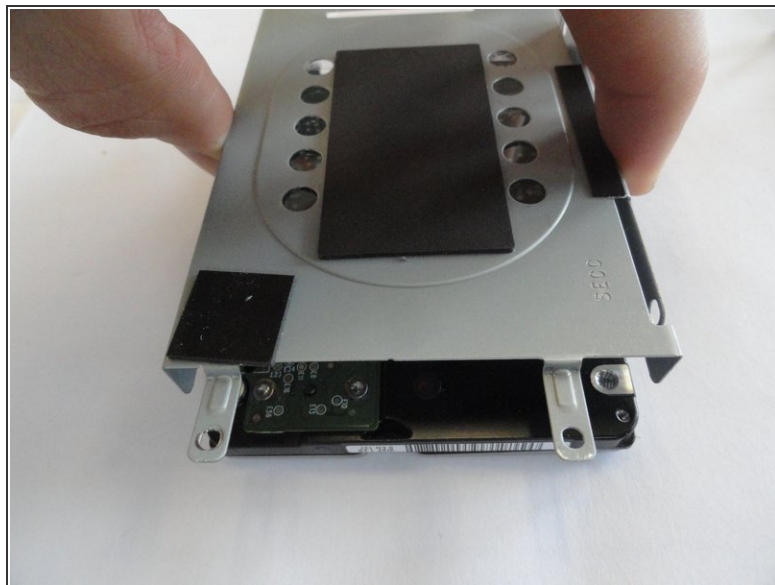
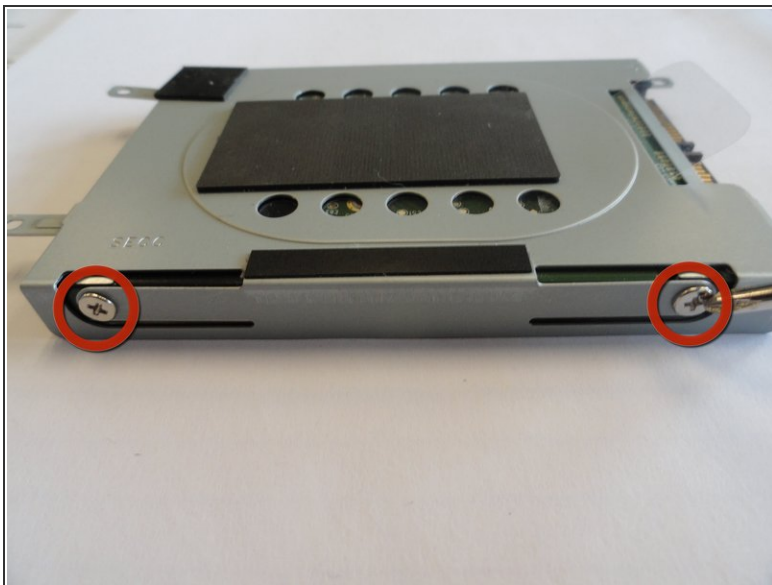
-  Grab the tab between your thumb and index finger.
 -  Hold the hard drive securely in a horizontal position using your other hand.
 -  Push the hard drive to the left using the plastic tab to disconnect it from the laptop.
-  To prevent damage of the connection on the hard disk drive or the laptop, perform this task slowly and with care.

Step 11



- While still holding the plastic tab, lift the right side of the hard drive out at a 45° angle.
- Pull the hard drive out.

Step 12



- If you need to remove the bracket from the hard drive, follow the next few steps:
 - Remove the two 3.67-mm screws from either side of the bracket with a Phillips #00 screwdriver.
 - Lift the bracket off the hard drive.

To reassemble your device, follow these instructions in reverse order.