



# Sony Vaio Fit 13A SVF13NA1EL Screen Connector

Screen not responding to the keyboard? There may be a loose connection in the screen connector. Disassemble the screen to reconnect screen connector.

Written By: Olivia



---

# INTRODUCTION

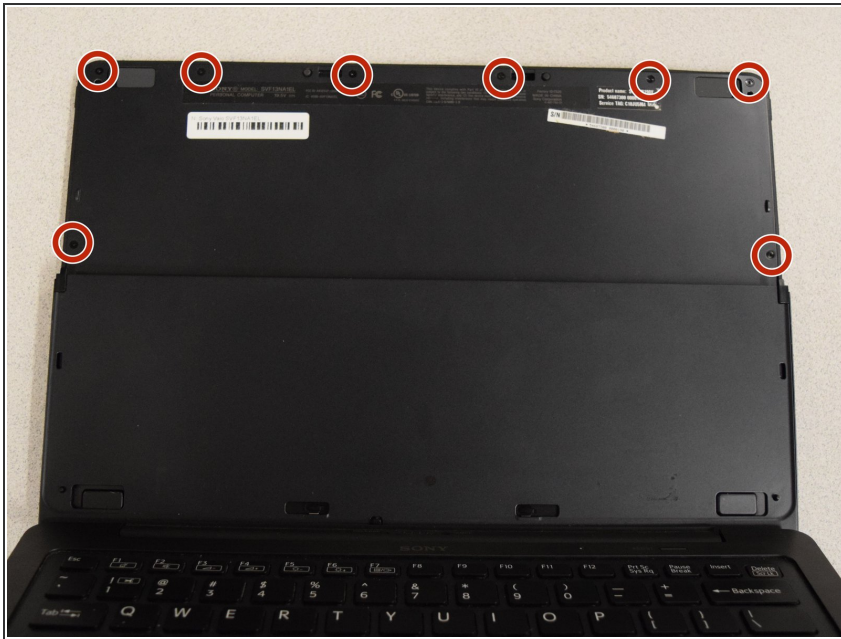
Laptop screen having connectivity issues? Need to replace the screen connection? Look no further!

---

## TOOLS:

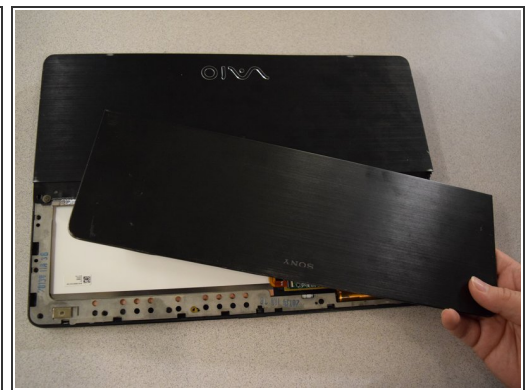
- [iFixit Opening Tools](#) (1)
  - [JIS #0 Screwdriver](#) (1)
-

## Step 1 — Sony Vaio Fit 13A SVF13NA1EL Screen Connector



- Flip over the screen
- Remove all 8 screws as shown circled in the image using a Phillips #0

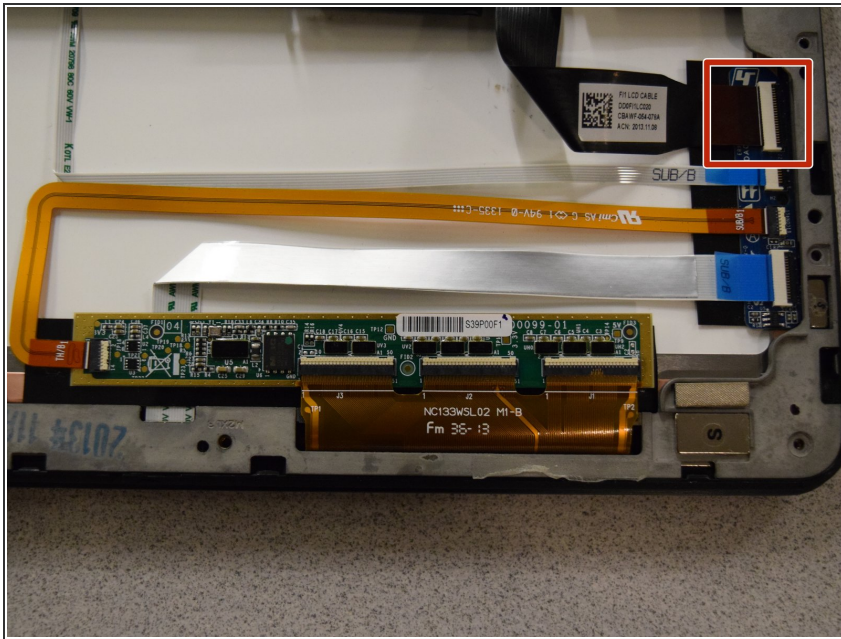
## Step 2



- Flip the screen back over.
- Use a plastic spudger to remove the top section of the cover.

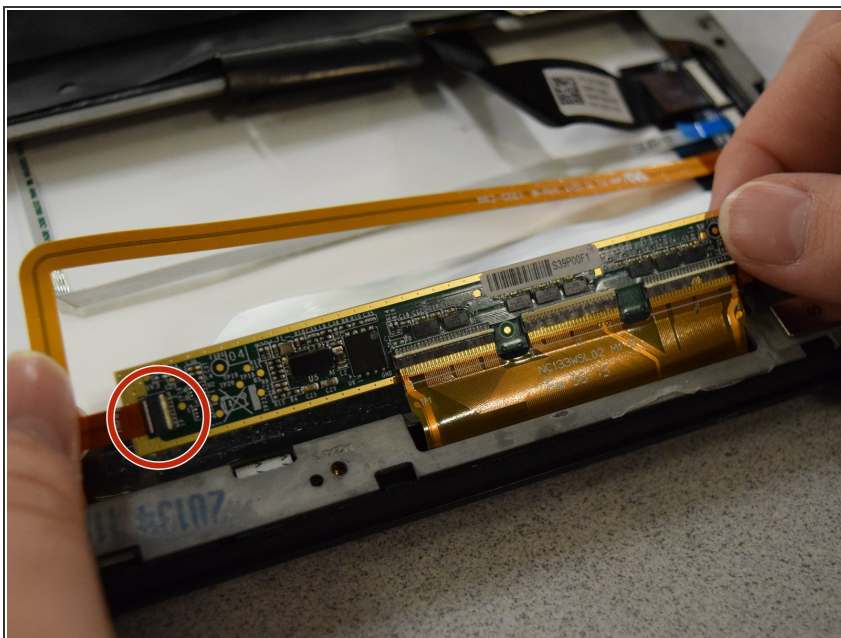


### Step 3



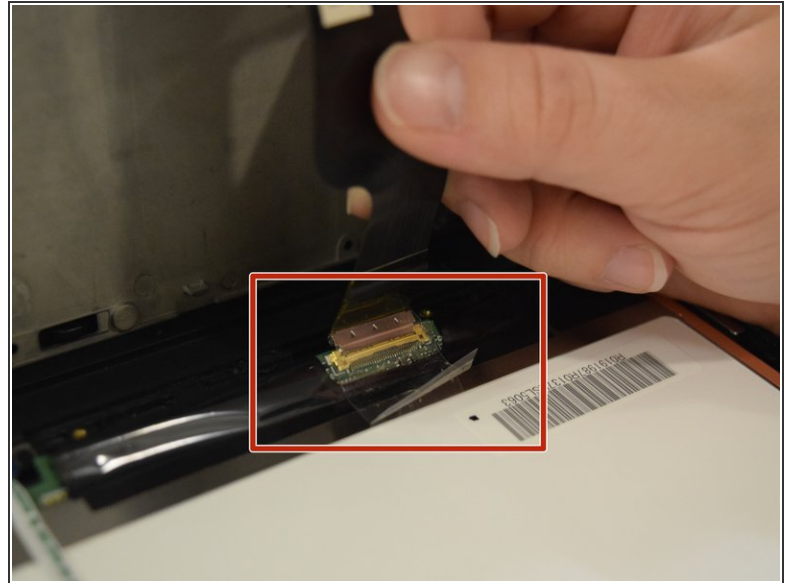
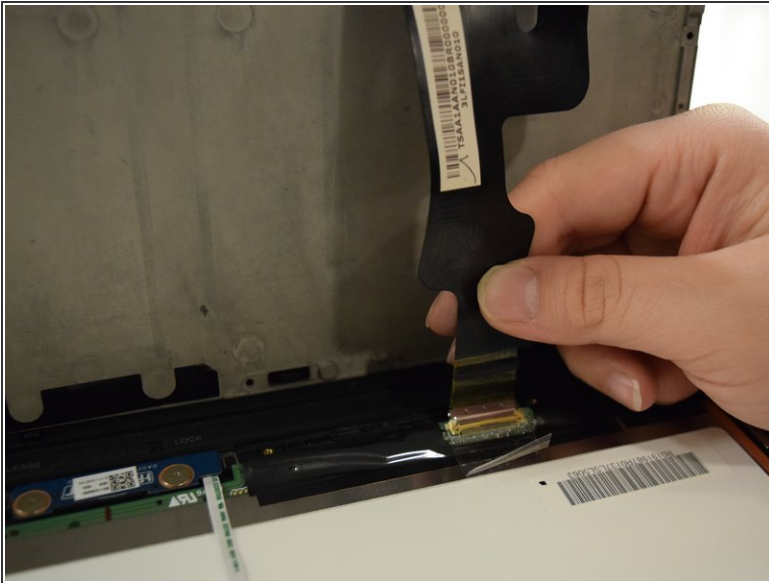
- Unplug the screen connector from the back of the screen.

### Step 4



- Disconnect the ribbon wire from the LCD connector by gently pulling it.

## Step 5



- Gently raise the metal framework of the laptop to reveal the remaining portion of the screen connector.
- Follow the ribbon wiring to where it connects to the screen.
- Carefully pull the wiring to disconnect and click it back in place to reconnect.

To reassemble your device, follow these instructions in reverse order.