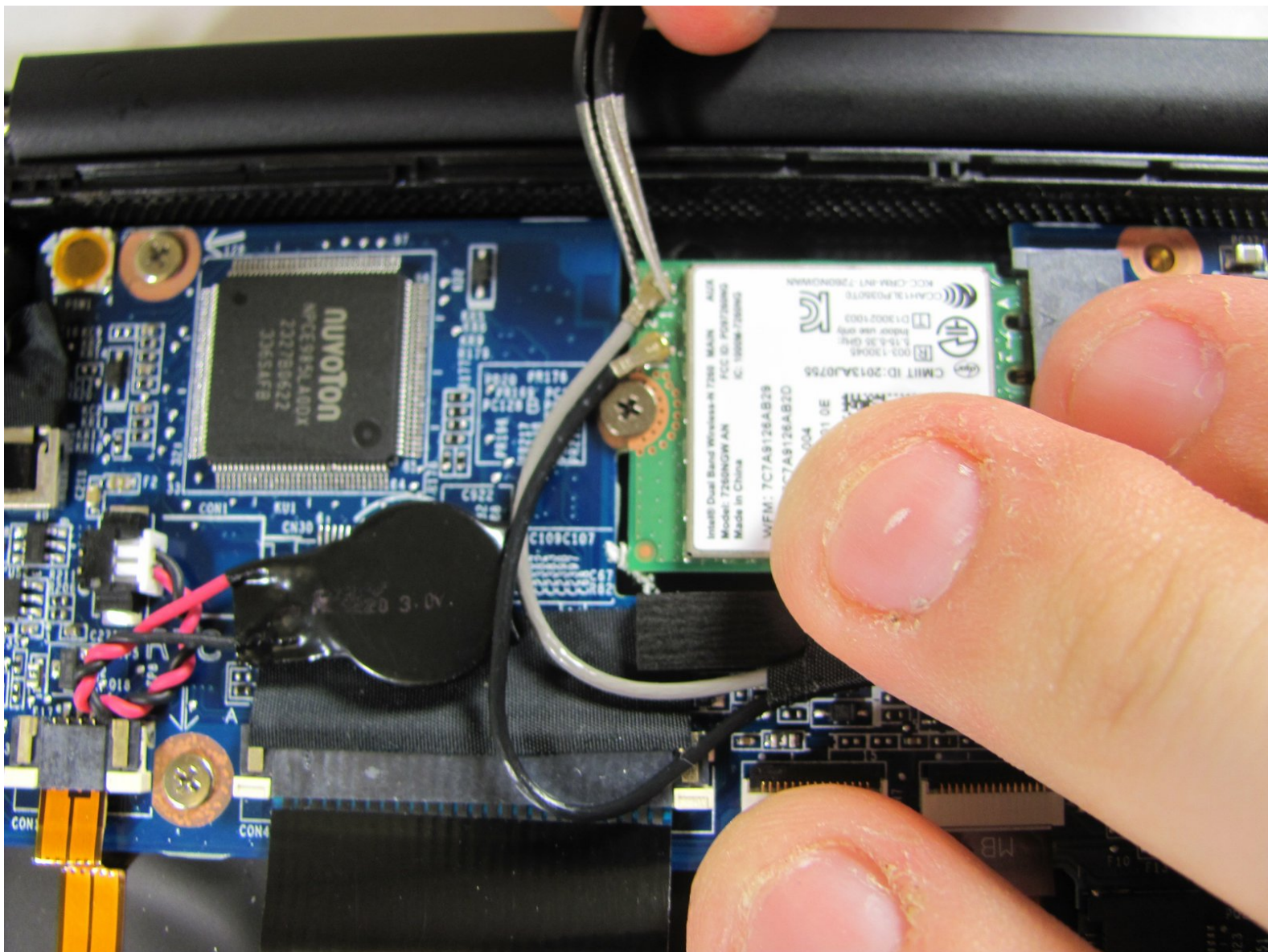




Sony Vaio Fit 13A Wireless Card Replacement

This guide will walk you through how to remove the wireless card from your Sony Vaio Fit 13A laptop.

Written By: Alex Prange





TOOLS:

- [Metal Spudger](#) (1)
 - [iFixit Opening Tools](#) (1)
 - [Phillips #0 Screwdriver](#) (1)
-

Step 1 — Back Cover




- Starting with the laptop top-down, locate and remove the twelve 1mm Phillips #0 screws securing the back cover to the main body of the computer.

Step 2



- Use the Plastic Opening Tools or Metal Spudger to carefully loosen back cover from the body of the computer.

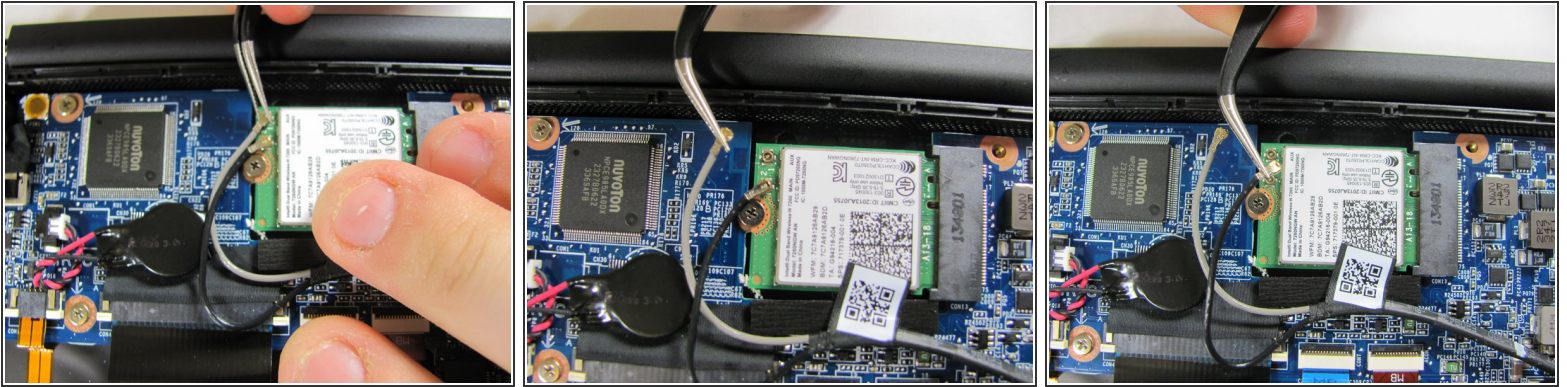
 Be sure to avoid headphone jack when removing back cover by lifting cover away from computer and up.

Step 3



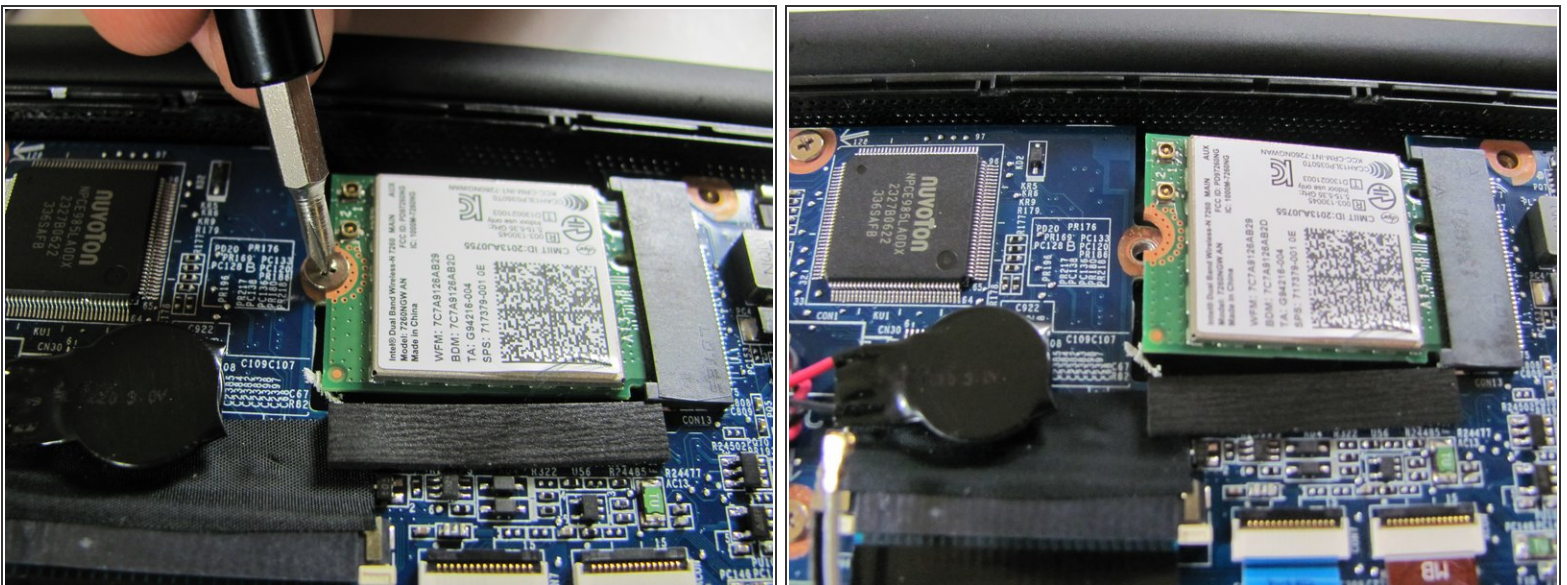
- Lift off back cover to access inner components of computer.

Step 4 — Wireless Card



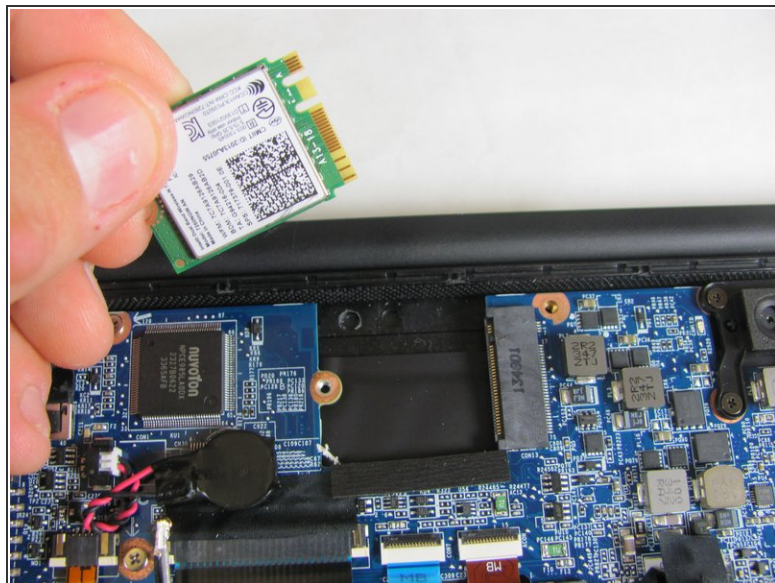
- Use a pair of tweezers to gently disconnect the two antenna cables.

Step 5



- Locate and remove the single 1mm Phillips #0 screw that is securing the wireless card to the motherboard.

Step 6



- Gently grasp wireless card with two fingers and pull away from motherboard to the left.

⚠ Do not pull the wireless card up when removing it. This could snap the connections.

To reassemble your device, follow these instructions in reverse order.