



# Sony Vaio Fit SVF15N26CXB Display Replacement

If your screen or display is broken this guide will show you how to replace the Sony Vaio Fit SVF15N26CXB display and screen.

Written By: Althea McDavid



## INTRODUCTION

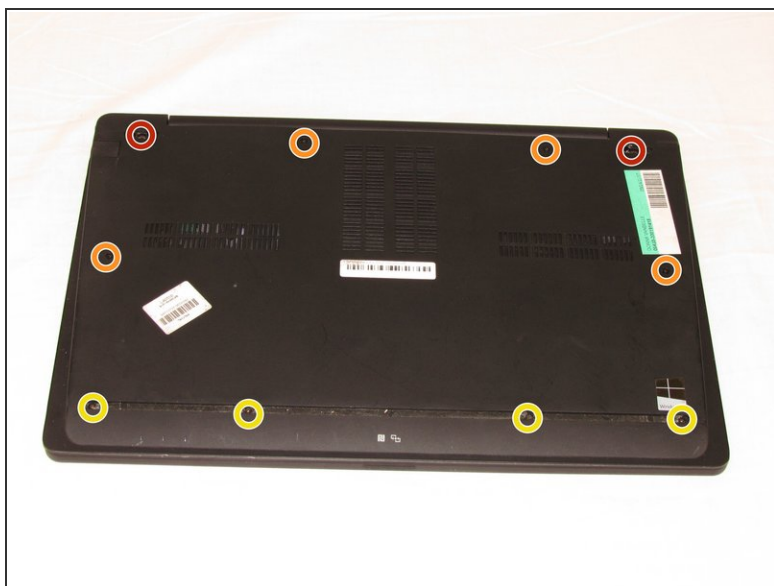
The Sony Vaio Fit SVF15N26CXB has a flip screen that makes it different from a regular screen to remove. This guide will show you the necessary steps to take to replace the display. Use the project mat to keep the screws organized.



### TOOLS:

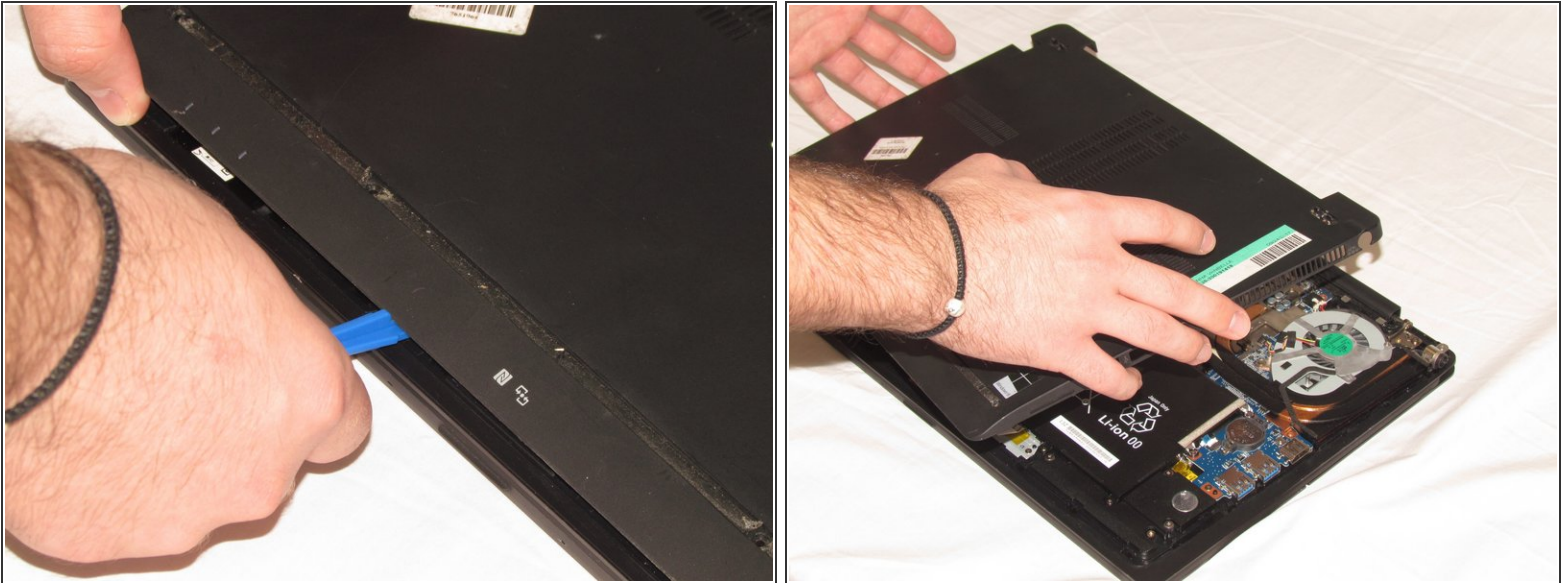
- [Anti-Static Wrist Strap](#) (1)
  - [Tweezers](#) (1)
  - [Spudger](#) (1)
  - [Phillips #00 Screwdriver](#) (1)
  - [iFixit Opening Tools](#) (1)
  - [Magnetic Project Mat](#) (1)
-

## Step 1 — Battery



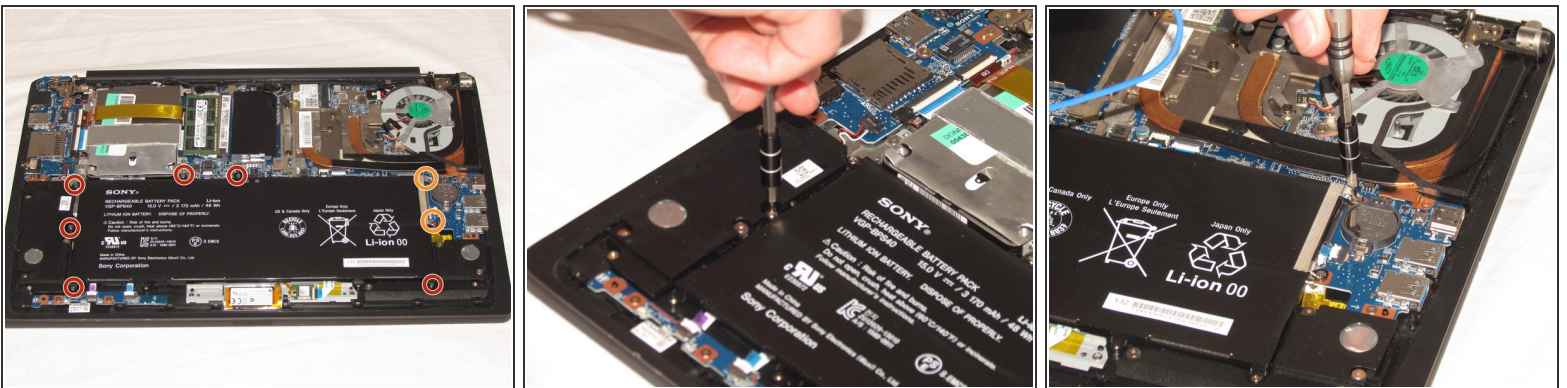
- Remove the following ten screws from the bottom case of the laptop:
  - Two 6.5mm Phillips #00 Phillips screws.
  - Four 8.95mm Phillips #00 screws.
  - Four 6.25mm Phillips #00 screws.
- ⓘ The screws may be hidden underneath a rubber foot that can be removed with a spudger.

## Step 2



- Use a plastic opening tool to separate the bottom cover from the laptop.
- Lift the lower cover and pull away from the laptop.

## Step 3



- Remove the eight Phillips #00 screws from the battery:
  - Six 4.65mm screws.
  - Two 4.65mm screws.

## Step 4



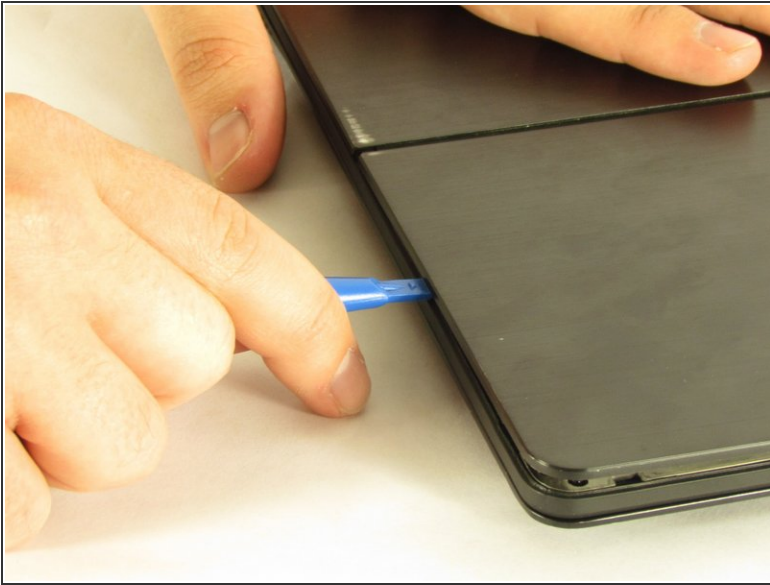
- Lift the battery up and pull it out of the laptop.

## Step 5 — Display



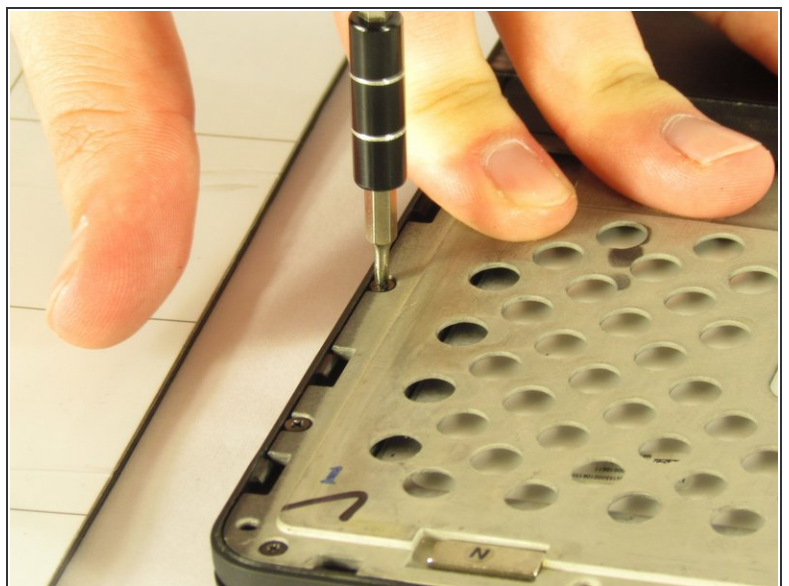
- Open the laptop and rotate the screen to the back side.
- Remove the eight 2.85mm Phillips #00 screws from the back of the screen.

## Step 6



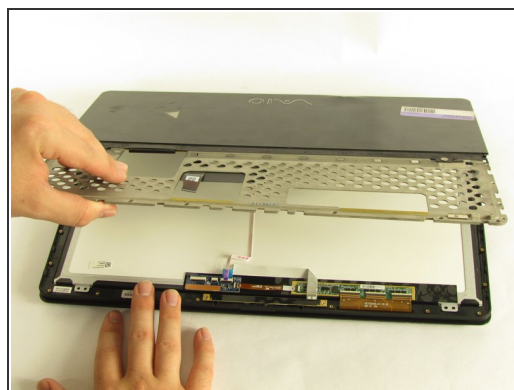
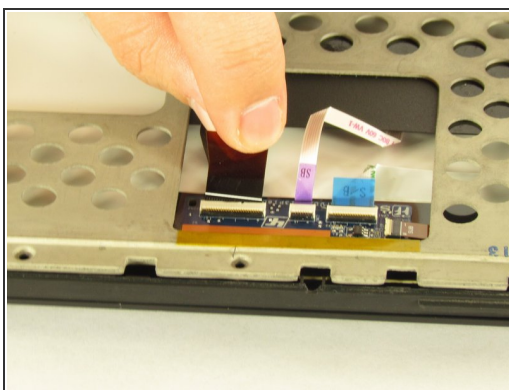
- Rotate the screen back and close the laptop.
- Use a plastic opening tool to carefully pry up the back plastic case.
- Remove the back plastic case by sliding it down and pulling upwards.

## Step 7



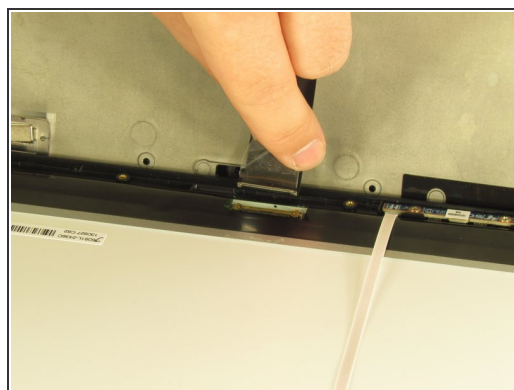
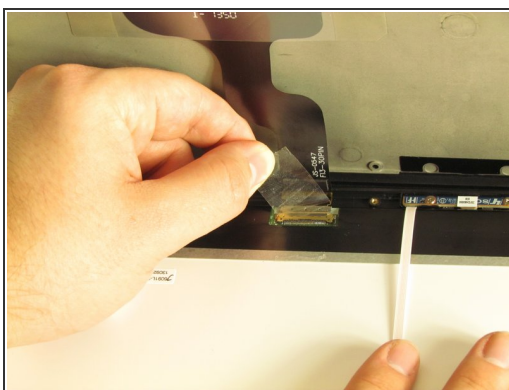
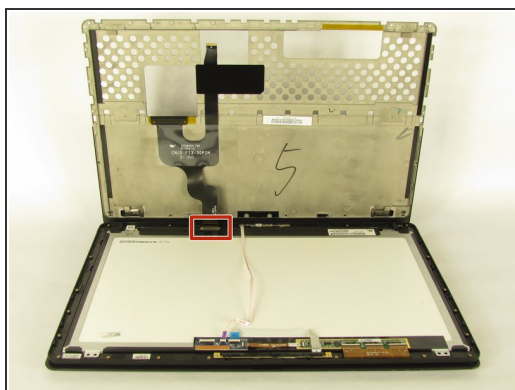
- Remove the thirteen 2.85mm Phillips #00 screws from the screen.

## Step 8



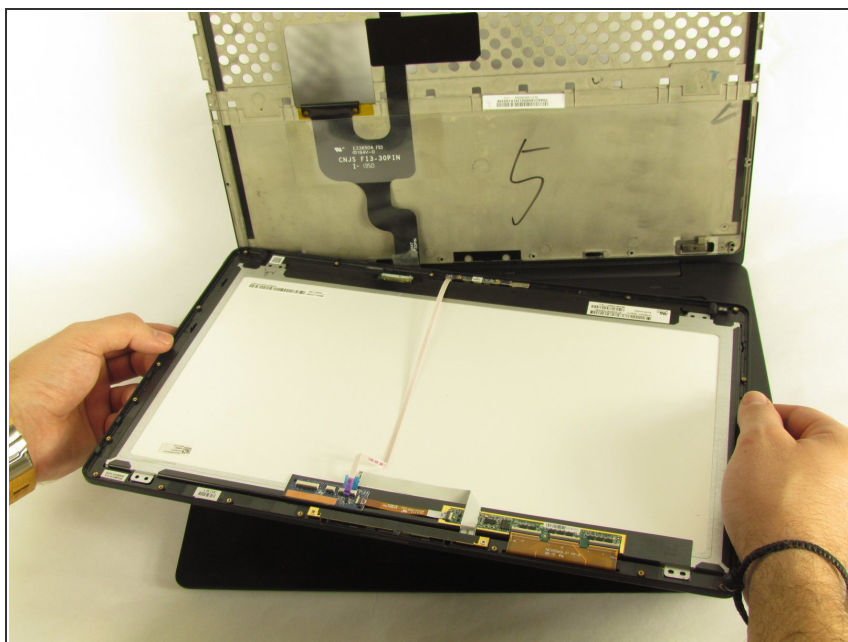
- Use a spudger to lift up the black latch on the ZIF connector.
- Pull the display ribbon cable out of the ZIF connector.

## Step 9



- Remove the display cable peeling up the tape.
- i** The display cable locking mechanism is attached to the tape.

## Step 10



- Remove the display.

To reassemble your device, follow these instructions in reverse order.