



# Sony Vaio PCG-161L Keyboard Replacement

How to replace the keyboard on your Sony Vaio PCG-161L.

Written By: Roman Alshehri



---

## INTRODUCTION

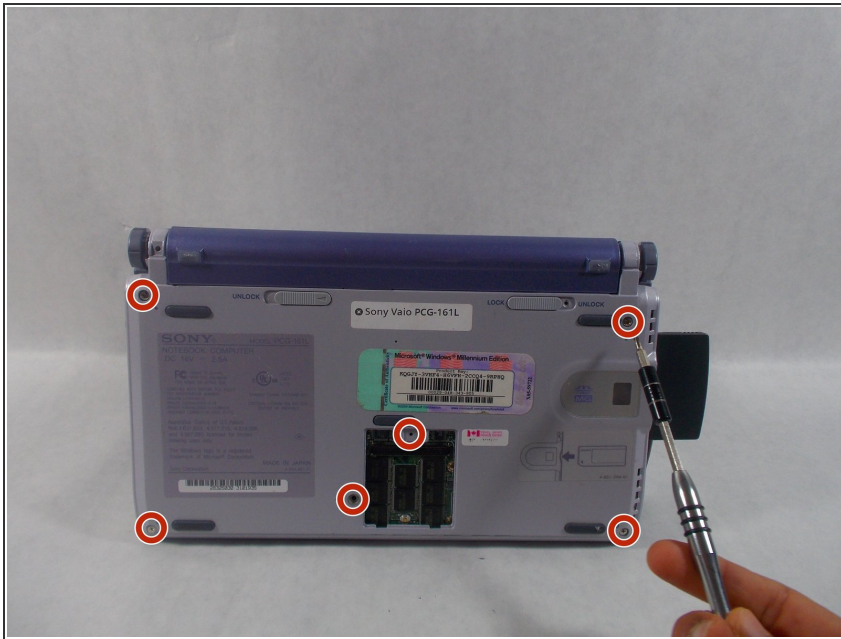
Use this guide to replace the keyboard on your Sony Vaio PCG-161L. If you are having trouble with your keyboard, you may need to replace the entire keyboard.



### TOOLS:

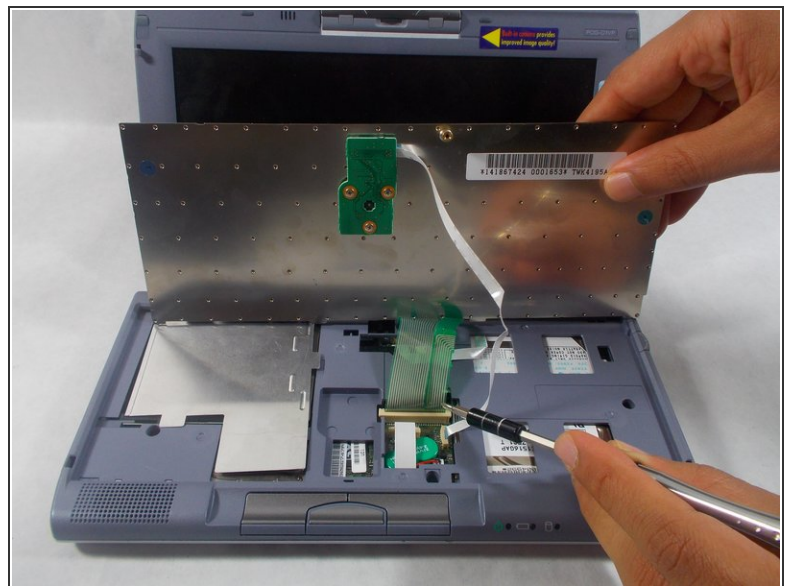
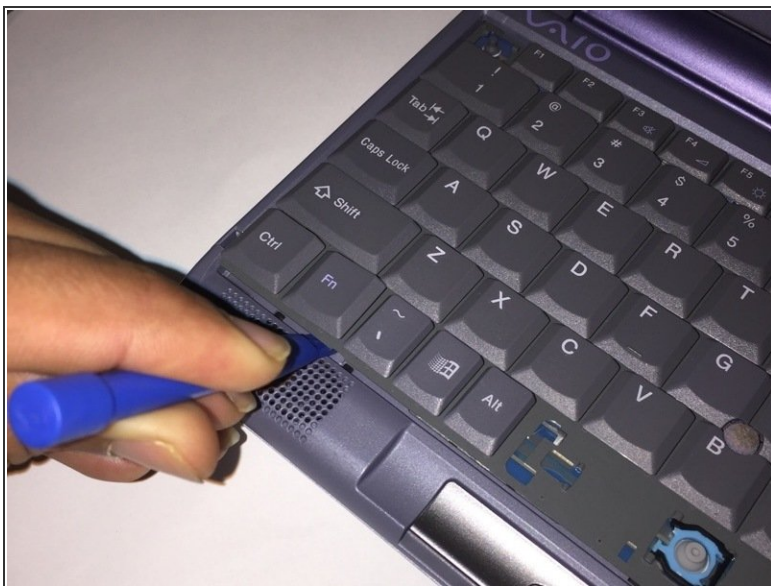
- [iFixit Opening Tools](#) (1)
-

## Step 1 — Keyboard



- Turn your device upside down and remove the 6 10mm screws attaching the back casing to the device using a phillips head screwdriver.

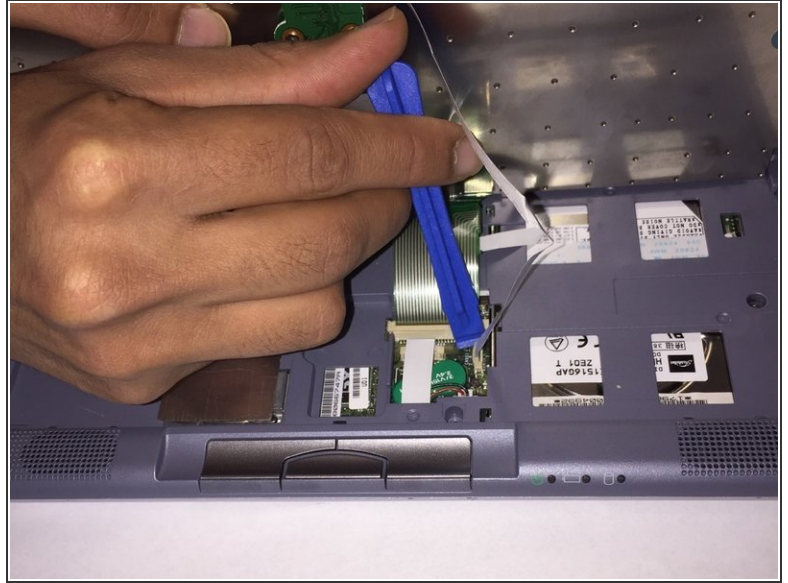
## Step 2



- Lift up underneath the keyboard using the iFixit opening tool to expose the ribbon wires connecting the keyboard to the motherboard.



## Step 3



- i** The two ribbon cables connecting the keyboard to the motherboard are held in using zero insertion force (ZIF) connectors.
- Use a plastic opening tool or your fingernail to flip up the small retaining flaps, then pull the ribbon cables out of their connectors.

To reassemble your device, follow these instructions in reverse order.