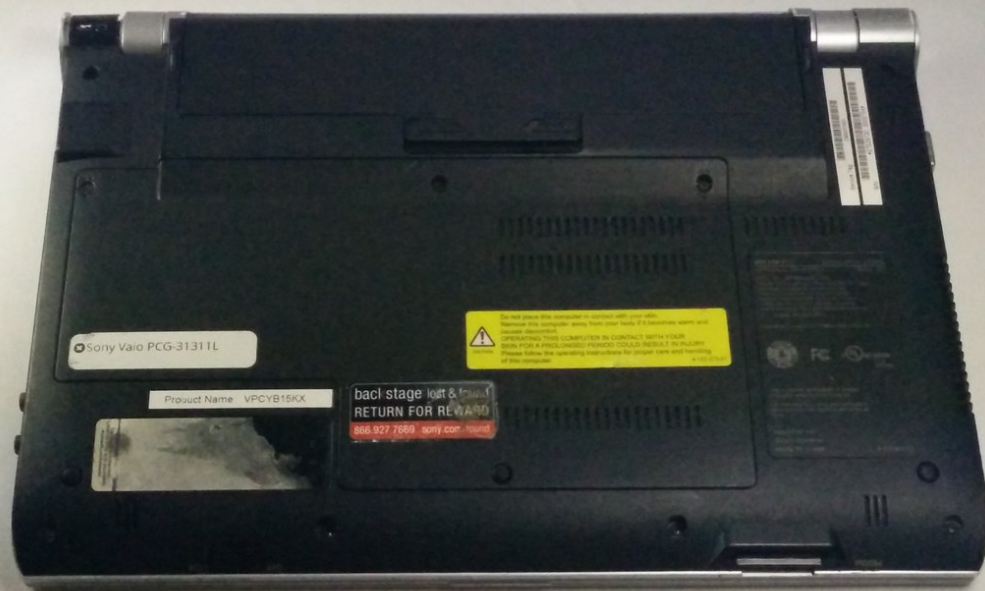




Sony Vaio PCG-31311L Hard Drive Replacement

This guide will show how to access and remove the hard drive.

Written By: Tyler

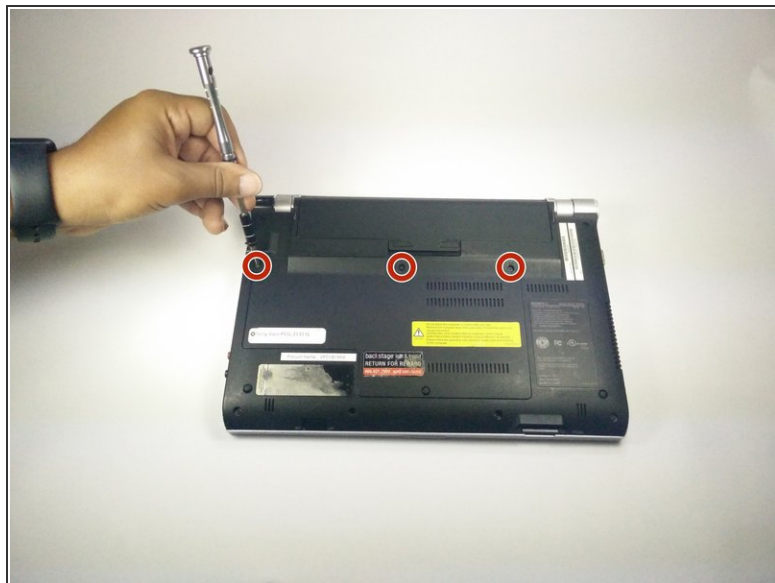




TOOLS:

- [iFixit Opening Tools](#) (1)
-

Step 1 — Hard Drive



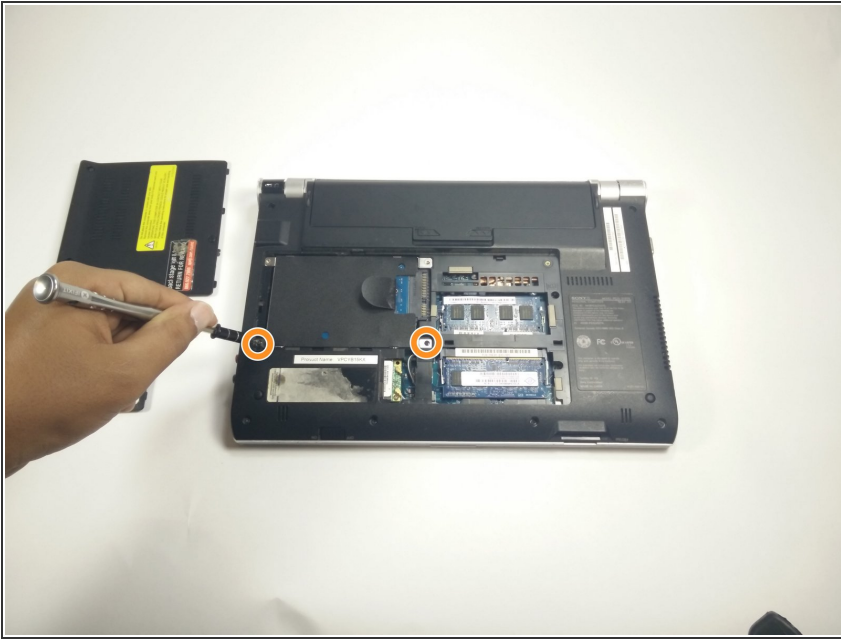
- Start with device closed, powered off, and upside down.
- Locate the 3 screws on the bottom plate and unscrew.
- ⓘ These screws do not detach from the plate.

Step 2



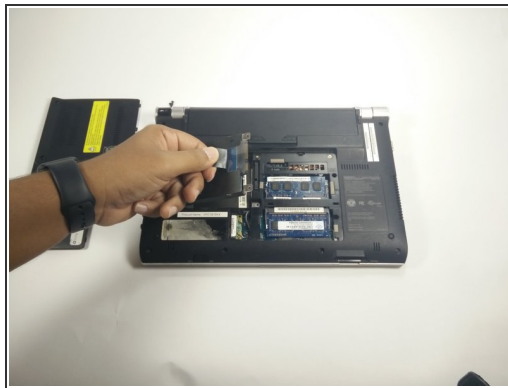
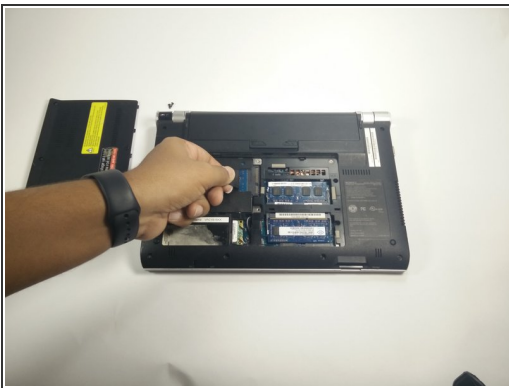
- Use a plastic opening tool to pull up on the plate and remove from device.

Step 3



- Locate screws holding in the hard drive and remove.

Step 4



- Grab the black plastic tab on the hard drive with two fingers.
- Swiftly pull up on the tab to remove the hard drive.

To reassemble your device, follow these instructions in reverse order.