



Sony Vaio PCG-41216L Network Card Replacement

How to replace the network card in a Sony Vaio PCG-41216L.

Written By: Elmar Charoensaengsanga



INTRODUCTION

If the laptop is experiencing issues when connecting to the internet without any software or internet service provider fixes working, then use this guide to replace the defective network card.



TOOLS:

- [Phillips #0 Screwdriver](#) (1)
 - [Tweezers](#) (1)
-

Step 1 — Network Card



- Flip the laptop over to begin the process.

⚠ Make sure the laptop is turned off and unplugged from the power cable.

Step 2



- Remove the two 7mm Phillips #1 screws holding the battery cover.

Step 3



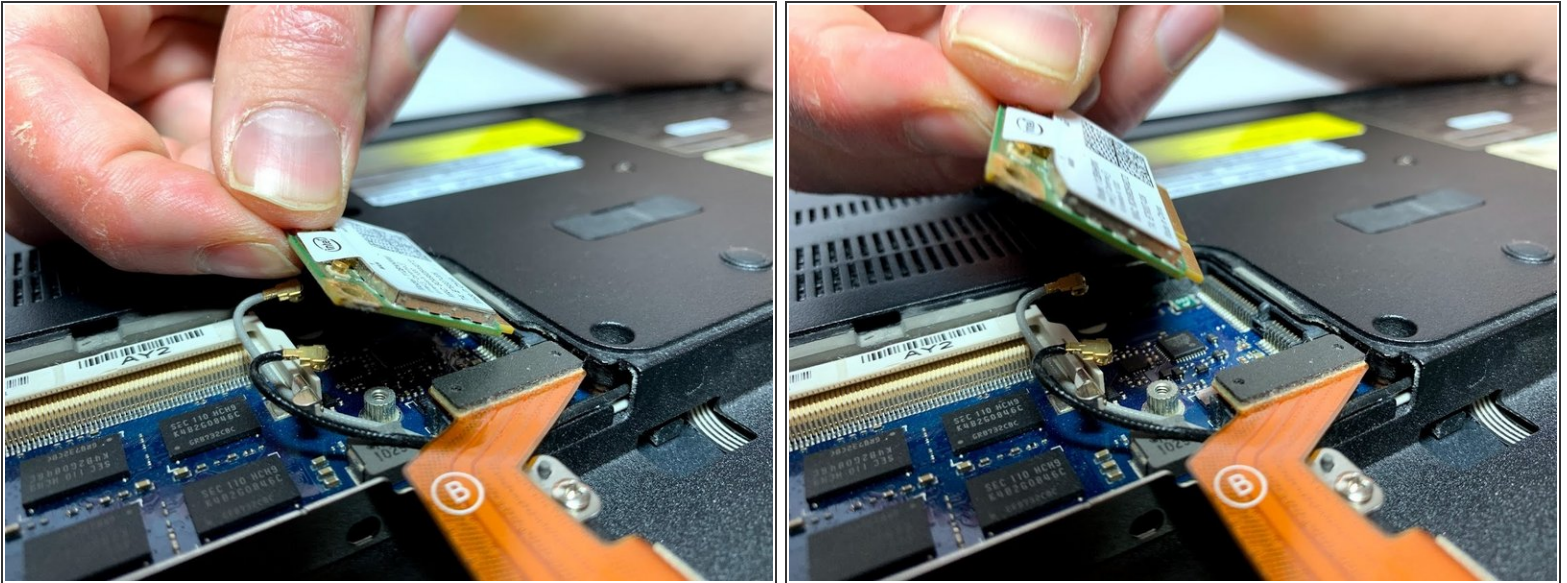
- Locate the networking card above the hard drive and next to the RAM.
- Carefully pop out the two connection cables from the networking card.

Step 4



- Remove the black tape to uncover the screw underneath.
 - Remove the 3mm Phillips head screw.
- ⚠ When loosening the screw, the network card will automatically lift itself to a diagonal position. This is normal.

Step 5



- Pull the network card straight out in the direction it is resting in.
- ✦ Reinsert the new network card diagonally and into the same position as the previous one.
- i To screw the new network card back into place, you will need to push the network card back down onto the motherboard.

To reassemble your device, follow these instructions in reverse order.