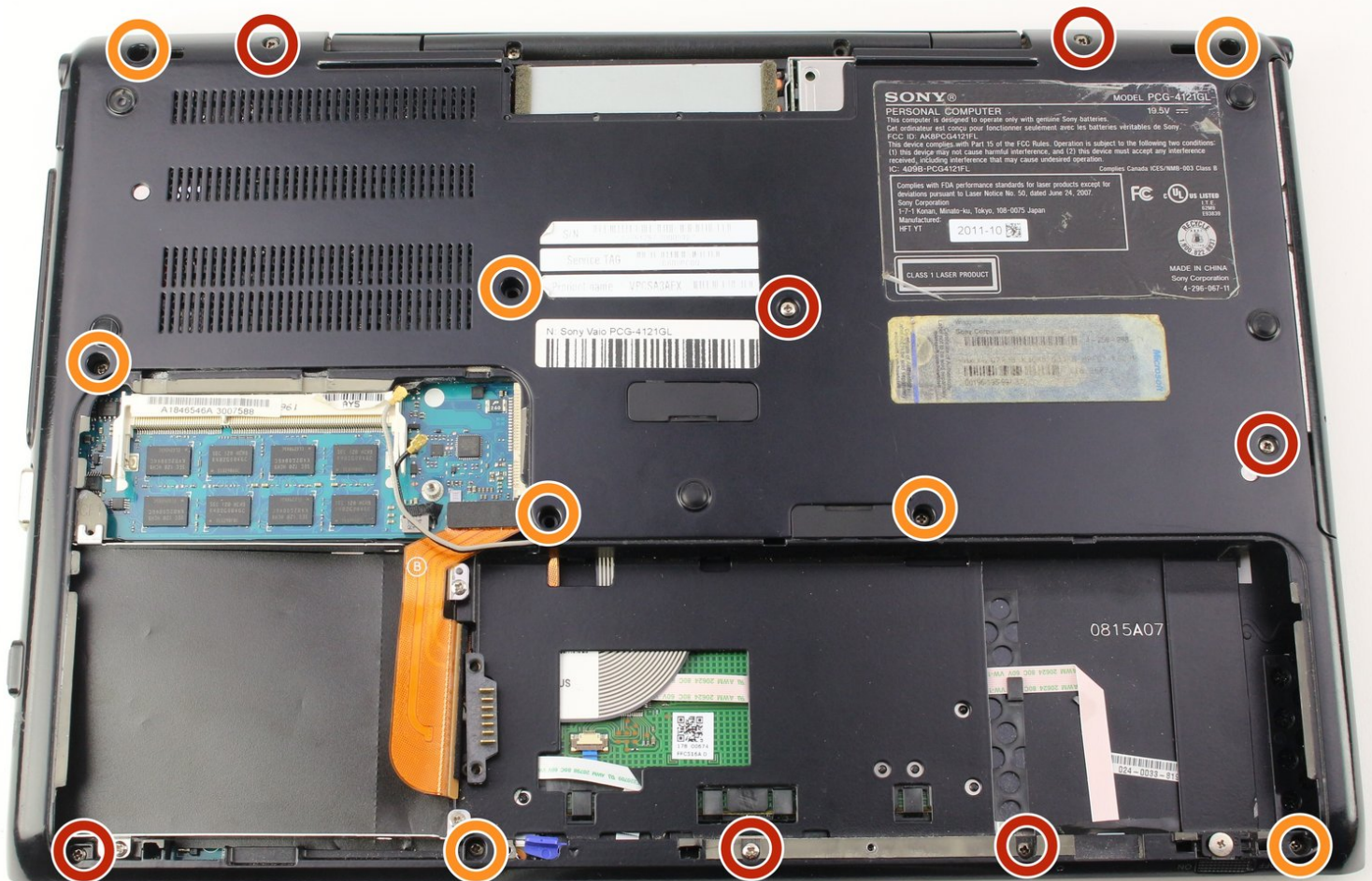




Sony Vaio PCG-4121GL SD Card Board Replacement

This guide will show you how to replace the Board for the SD Card for the Sony Vaio PCG-4121GL (VPCSA3AFX).

Written By: Bryce McNeil



INTRODUCTION

If your SD card is not being recognized, this fault may be due to your SD card board needing cleaning or replacement. Before starting this guide, it may be helpful to have a secure place to put the screws after they have been removed.



TOOLS:

- [Phillips #0 Screwdriver](#) (1)
 - [Phillips #00 Screwdriver](#) (1)
-

Step 1 — Battery



- Remove the two 3mm Phillips #0 screws on the bottom of the computer that secure the plastic backing.

Step 2



- Pull the bottom plate towards yourself until it unhinges fully.
- Once the plate is free from the backing remove it completely.

Step 3



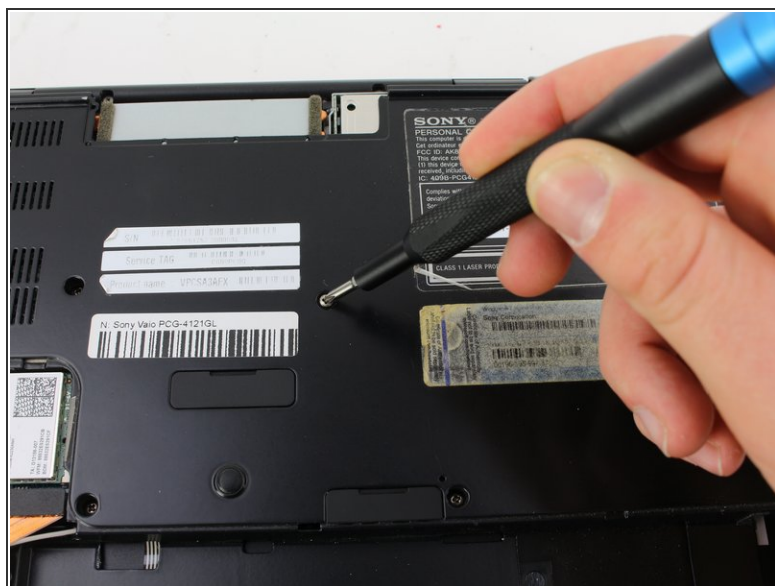
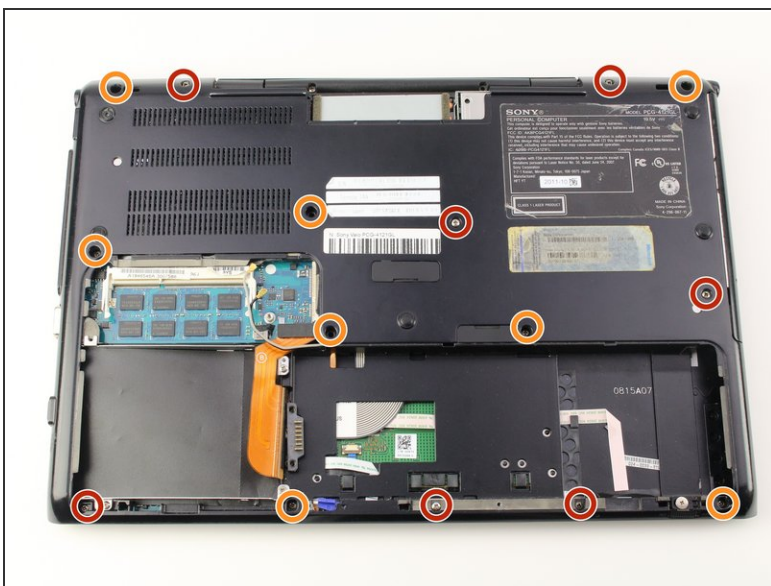
- Look for the blue tab that is located to the bottom left of the battery.

Step 4



- Pull the blue tab towards yourself until you hear a click.
 - Once the blue tab is released, pull up on the battery.
 - Once the battery can move freely, take it out completely.
- i** It may be helpful to have a spudger to make it easier to release the blue tab.

Step 5 — SD Card Board



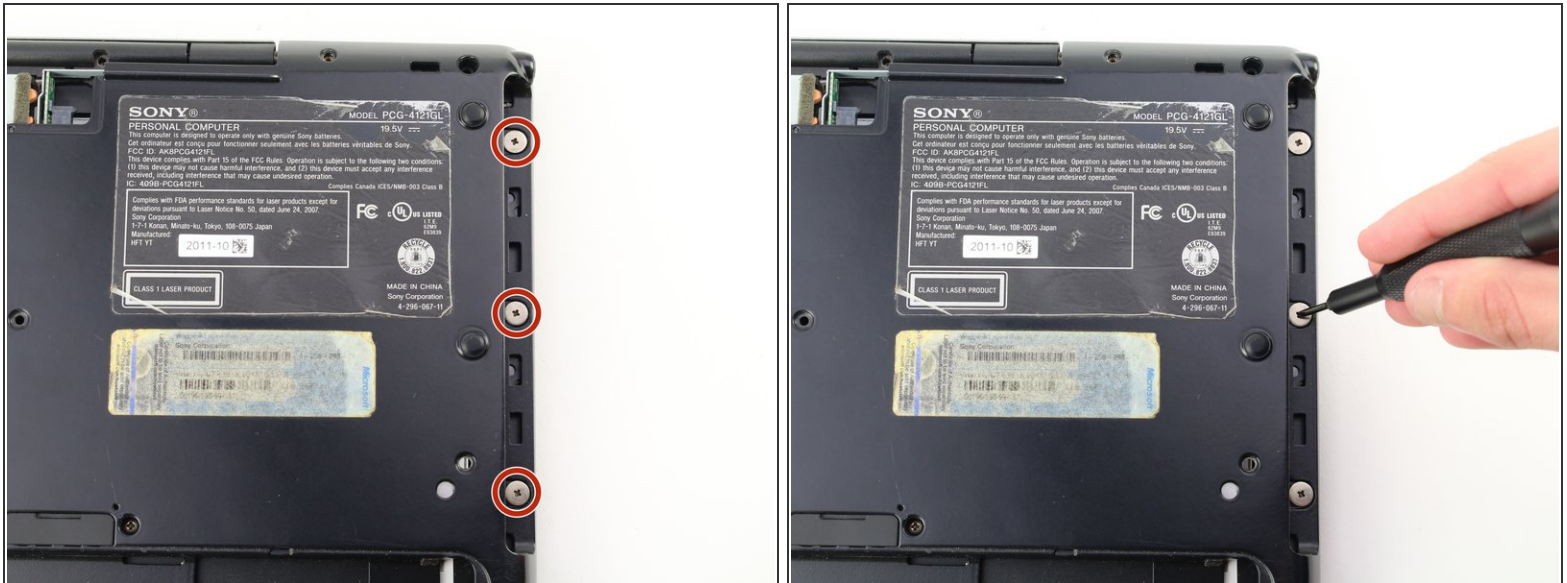
- Remove seven 3mm Phillips #0 screws from the bottom of the computer.
- Remove eight 5mm Phillips #0 screws.

Step 6



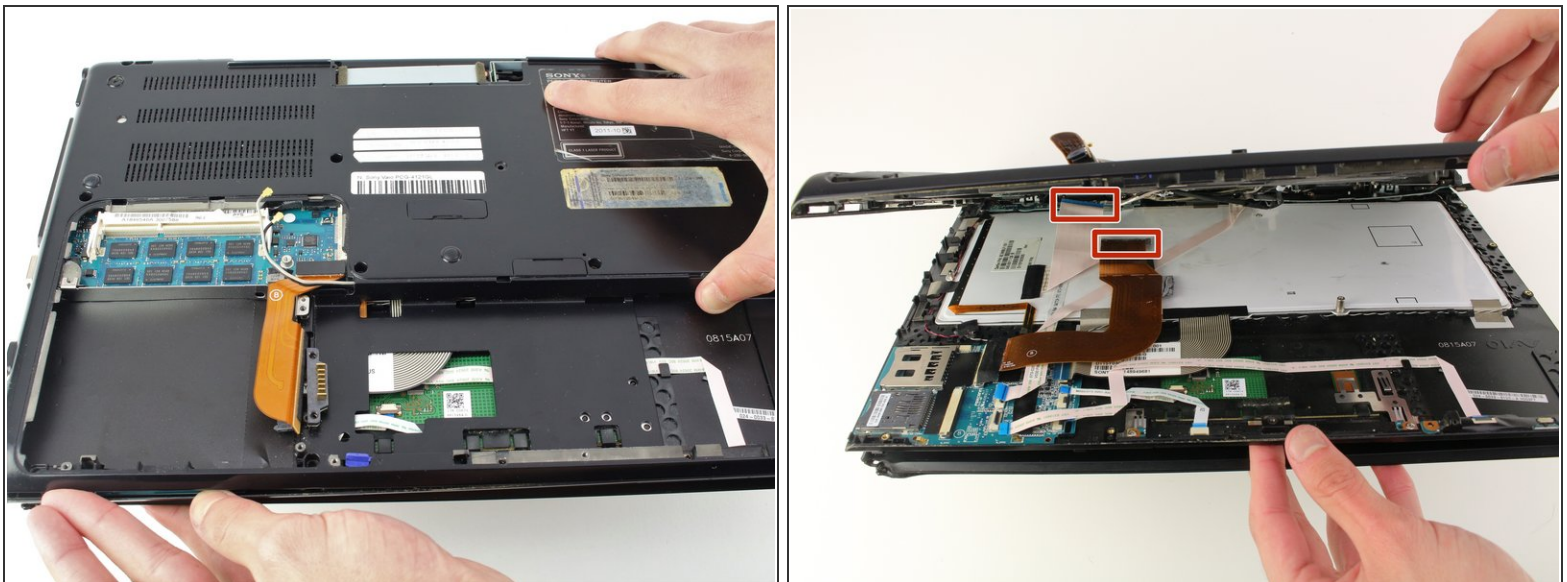
- Carefully remove the disk drive from its compartment.

Step 7



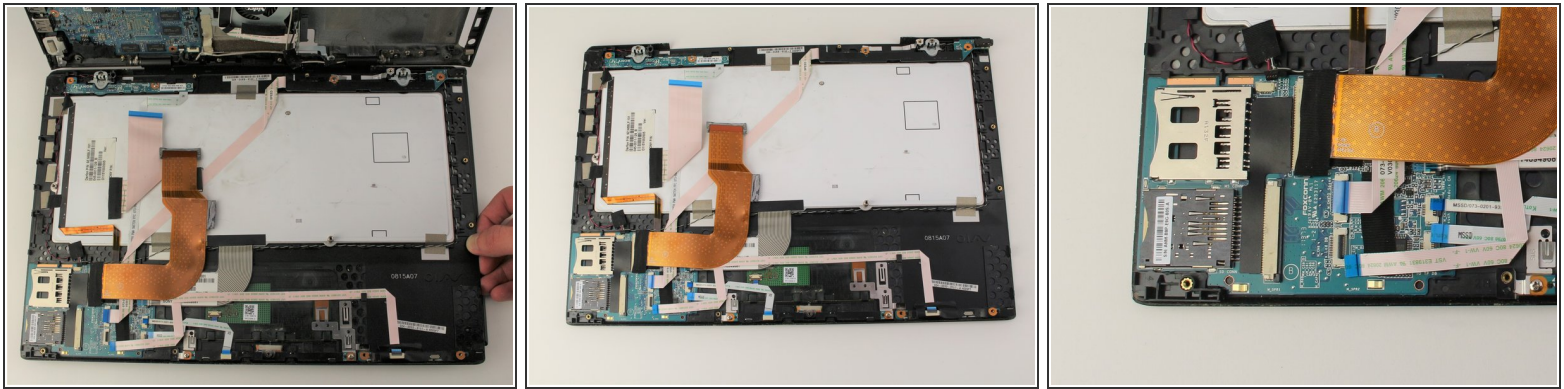
- Remove the three 2mm Phillips #00 screws located on the top right edge.

Step 8



- Gently pull apart the top and bottom plastic bodies.
- Carefully remove the cable connectors.
- ⚠ Slowly detach bottom component to avoid tearing wires/connectors.

Step 9



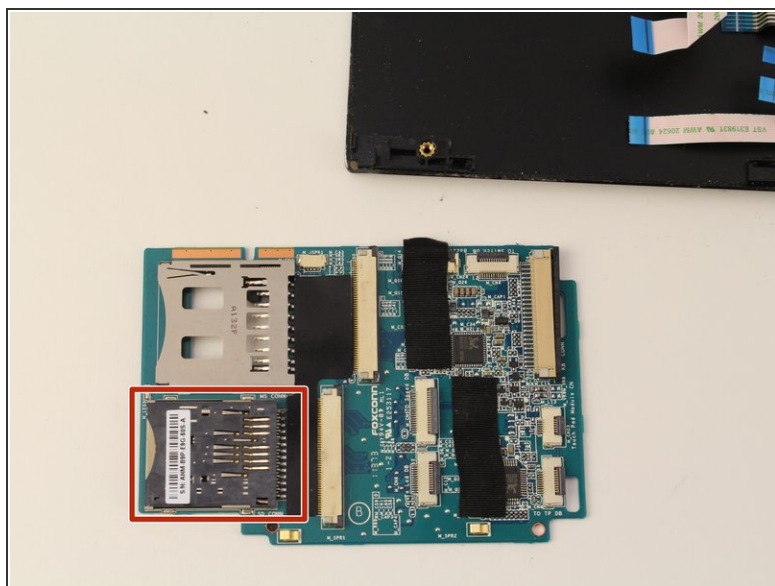
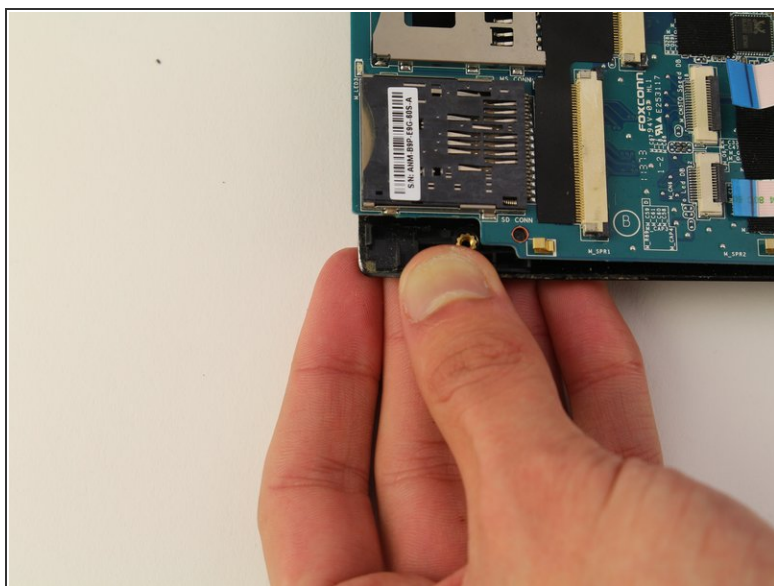
- Pull apart your device and set aside the screen of your laptop.
- Locate the SD Card Board in the bottom left of the computer body.

Step 10



- Remove the cables from their connectors.
- ⚠ Do not apply too much force to the cable connectors or they may tear.

Step 11



- Lightly press down on the bottom left corner of the plastic frame.
- Pull SD Board out towards you once it feels loose.
- Once the SD Board is free from the plastic, remove completely
- The SD Card slot is shown.

To reassemble your device, follow these instructions in reverse order.