



Sony Vaio PCG-4121GL Wifi Board Replacement

This guide will provide information on how to replace the WiFi Board for the Sony Vaio PCG-4121GL (VPCSA3AFX).

Written By: Miguel Camarena



This document was generated on 2019-10-15 04:39:57 AM (MST).

INTRODUCTION

If your computer is not recognizing WiFi connections that it normally does, the WiFi board may be faulty and may need to be replaced. Before starting this guide, it may be helpful to have a secure place to put the screws after they have been removed.

TOOLS:

- [Phillips #0 Screwdriver](#) (1)
-

Step 1 — Battery



- Remove the two 3mm Phillips #0 screws on the bottom of the computer that secure the plastic backing.

Step 2



- Pull the bottom plate towards yourself until it unhinges fully.
- Once the plate is free from the backing remove it completely.

Step 3



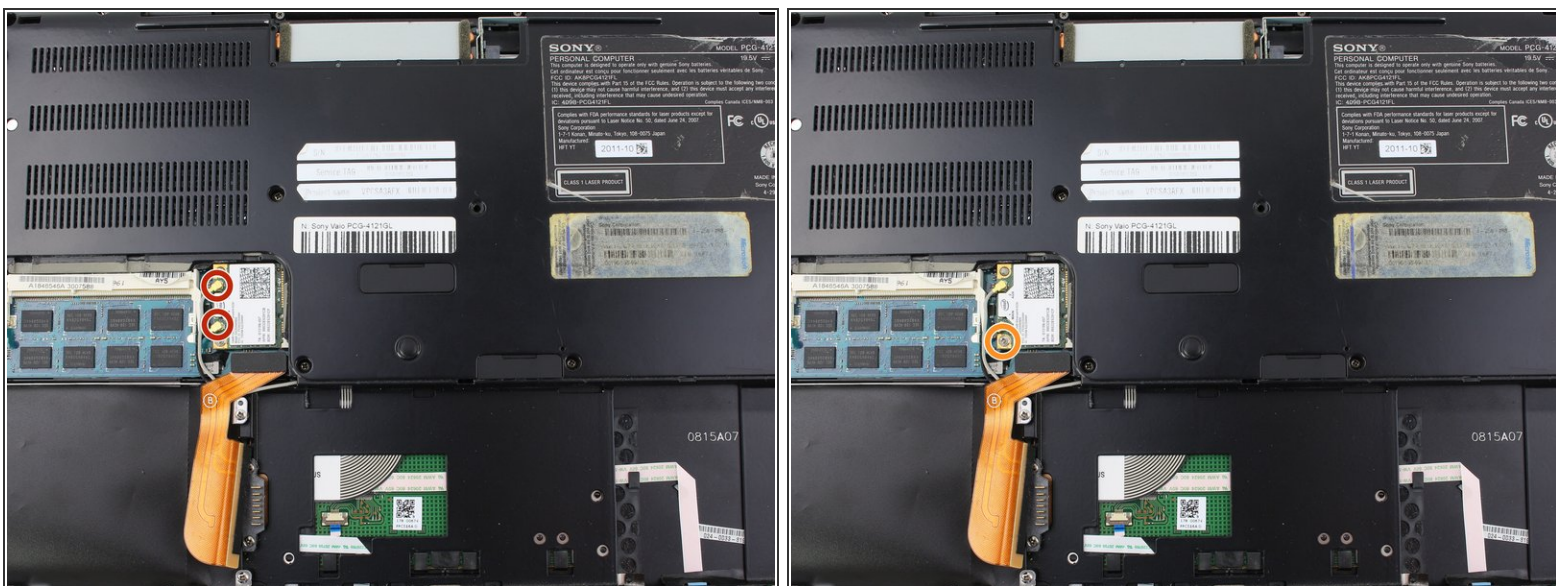
- Look for the blue tab that is located to the bottom left of the battery.

Step 4



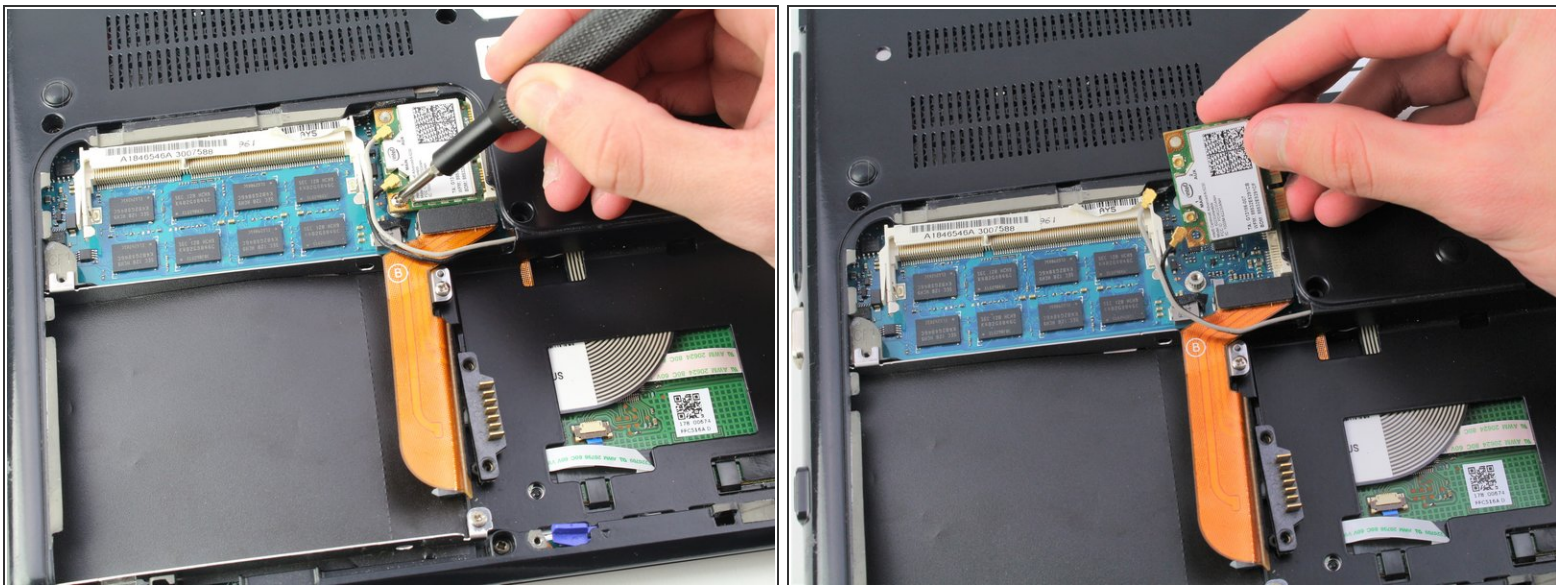
- Pull the blue tab towards yourself until you hear a click.
 - Once the blue tab is released, pull up on the battery.
 - Once the battery can move freely, take it out completely.
- i** It may be helpful to have a spudger to make it easier to release the blue tab.

Step 5 — WiFi Board



- Lift up the two golden knobs on the left side of the WiFi board.
- Remove the single 3mm Phillips #0 screw located on the WiFi board to the top left of the battery compartment.

Step 6



- Once the screw and the golden knobs have been disconnected, pull the WiFi board out to the left.
- Once the WiFi board is free from the device, remove completely.

To reassemble your device, follow these instructions in reverse order.