



Sony Vaio PCG-4K1L Display Screen Replacement

This guide provides instructions on how to install the display screen.

Written By: Andrew Ricker



INTRODUCTION

If the LCD Display Screen is black, cracked, or has colored lines running through it when the computer is on, the screen is broken. Follow these instructions on how to install a screen

TOOLS:

- [Phillips #0 Screwdriver](#) (1)
 - [iFixit Opening Tools](#) (1)
-

Step 1 — Display Screen



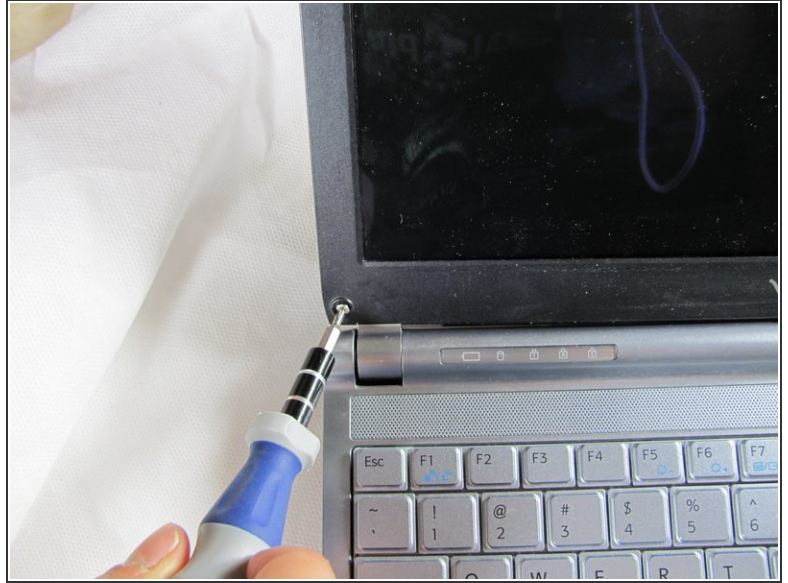
- Place the computer on a flat surface with the top facing up.
- Open the screen.

Step 2



- Locate the rubber screw caps at the two bottom corners of the screen.
- Use your finger to remove the rubber screw caps.

Step 3



- Locate the two screws, one on each bottom corner.
 - Unscrew the screws with a Phillips head size #0 screwdriver.
- ⚠ Keep track of the screws. They are small and easy to misplace.

Step 4



- Use a plastic opening tool to gently lift the plastic casing that borders the screen.
 - Pop off the casing by working the tool around the outside of it.
- i** Wiggling the tool may be required. The casing could be fitted snugly.

Step 5



- Carefully flip down the screen so it rests on the keyboard.
- Locate the wire connector on the back of the screen and use a plastic opening tool to gently loosen the wire connection.

Step 6



- Remove the screen.

To reassemble your device, follow these instructions in reverse order.