



Sony Vaio PCG-51412L Hard Drive Replacement

This guide will show you how to replace your laptop's hard drive.

Written By: Kris Fleming



INTRODUCTION

If your computer is running slowly, and other troubleshooting options are not working, you may need to replace your hard drive. This guide will walk you through how to remove your hard drive, requiring only a PH0 screwdriver.



TOOLS:

- [Phillips #0 Screwdriver](#) (1)



PARTS:

- [Sony VGP - BPS21A](#) (1)
- [2.5" SATA Hard Drive](#) (1)

Step 1 — Battery



- Flip your laptop so that the bottom is facing up.

Step 2



- Slide the "Lock" switch to the right.
- Slide and hold the "Release" switch to the left.

Step 3



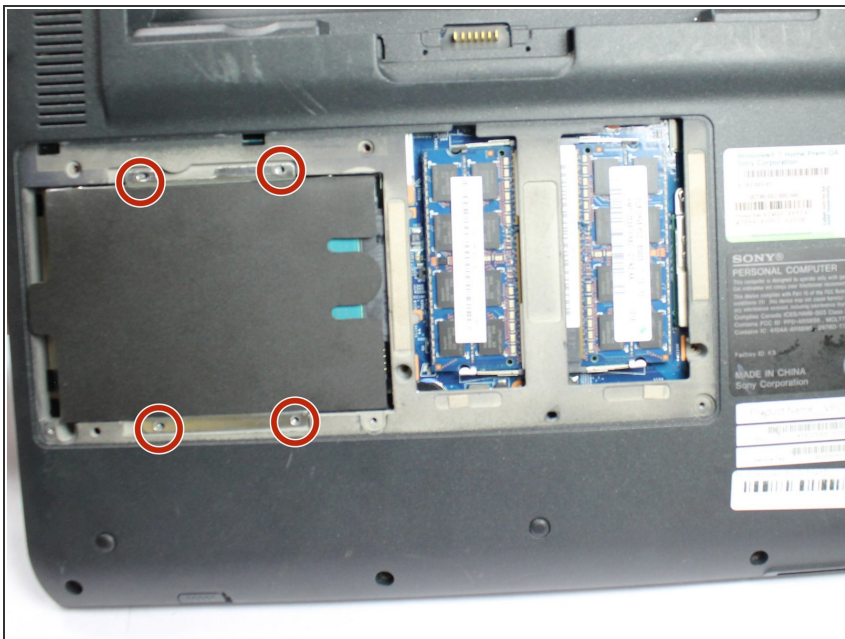
- While holding the “Release” switch, lift the lip of the battery.
- Lift the battery up and out of the laptop.

Step 4 — Hard Drive



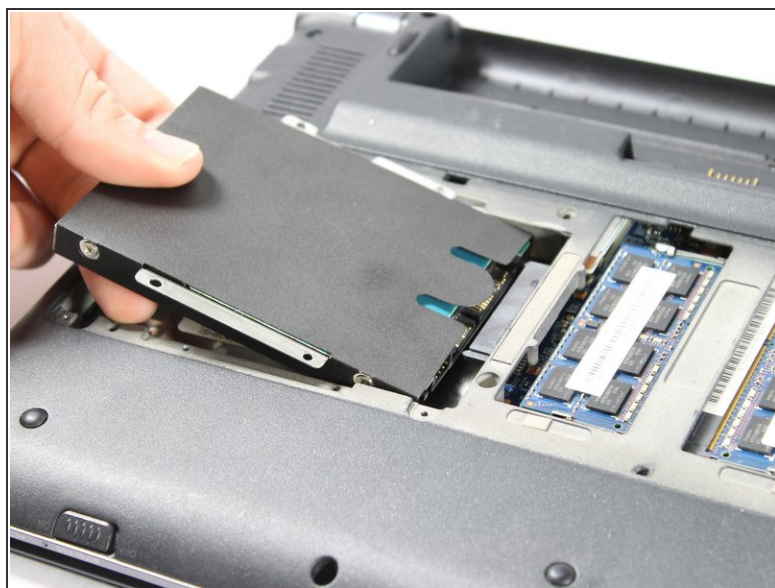
- Using a #0PH screwdriver, unscrew the three 4.80mm screws on the back of the device.
- The screws are held into the panel by washers, they will not fall out once unscrewed.

Step 5



- Remove the panel.
- Use the #0PH screwdriver to remove the four 3.61mm screws.

Step 6



- Carefully lift the hard drive.
- Remove the hard drive by pulling it to the left.

To reassemble your device, follow these instructions in reverse order.