



# Sony Vaio PCG-61411L Keyboard Replacement

How to replace your Sony Vaio PCG keyboard.

Written By: Patrick Jean Baptiste



## INTRODUCTION

During the life cycle of the Sony Vaio, you may encounter issues with certain key on your keyboard, hindering any work process you may be doing. This guide will help you fix this issue by removing the keyboard to make sure that everything is working fine


---

### TOOLS:

- [Phillips #00 Screwdriver](#) (1)
  - [Phillips #0 Screwdriver](#) (1)
-

## Step 1 — Battery



 Be sure to disconnect the device charger and power down the device before beginning.

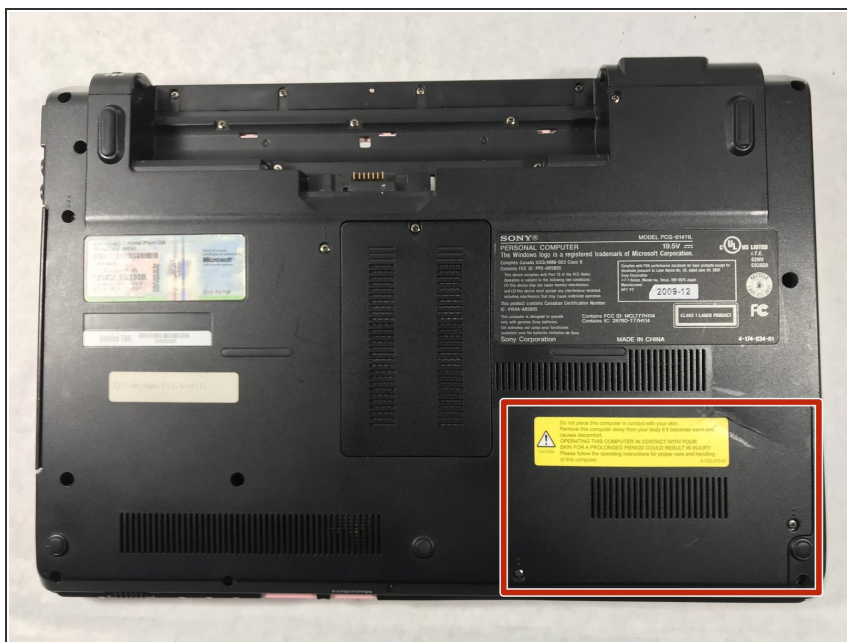
- Turn the device over onto its back, where the battery is at the top of the device. Slide the "lock" switch to the right.

## Step 2



- Slide the "release" switch to the left and gently lift the battery up to remove it.
- Completely remove the battery from the device.

## Step 3 — Hard Drive



- The hard drive panel is located in the bottom right corner of the device.

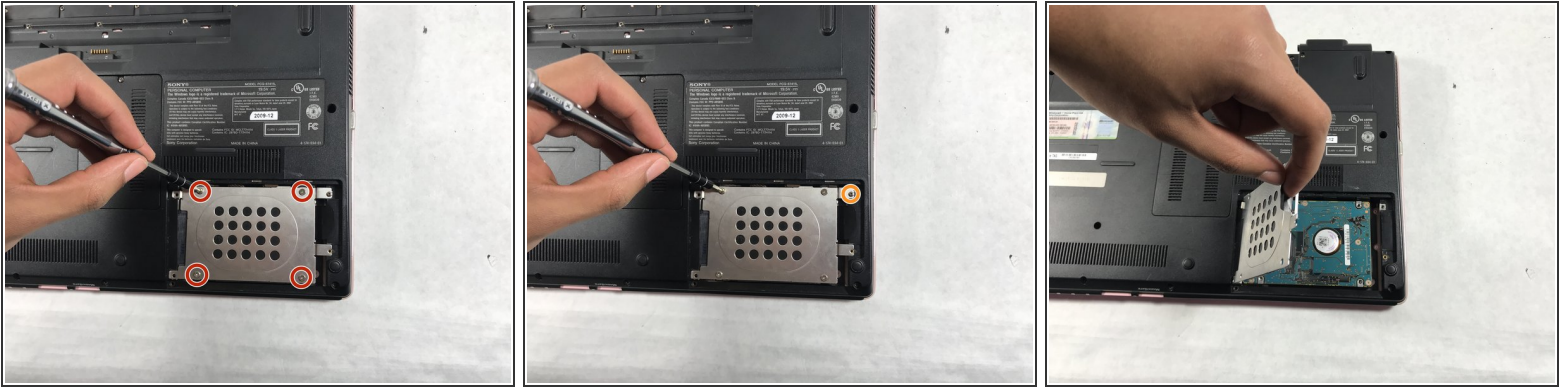
## Step 4



- Using the PH #0 screwdriver, unscrew the two 6.5mm screws located in the bottom left and middle right of the panel. The screws remain in the panels.
- Remove the panel by pulling it up towards yourself.

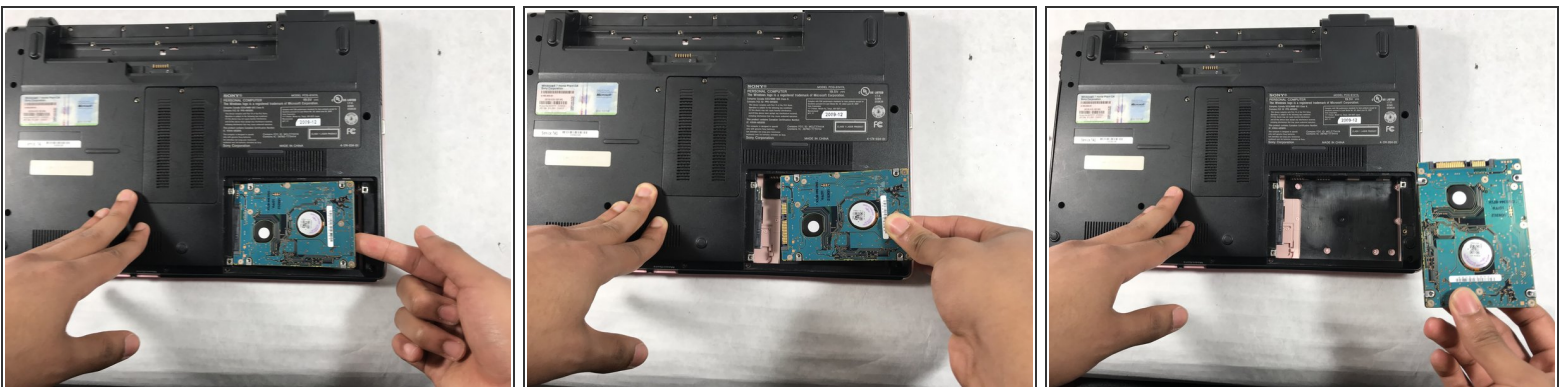


## Step 5



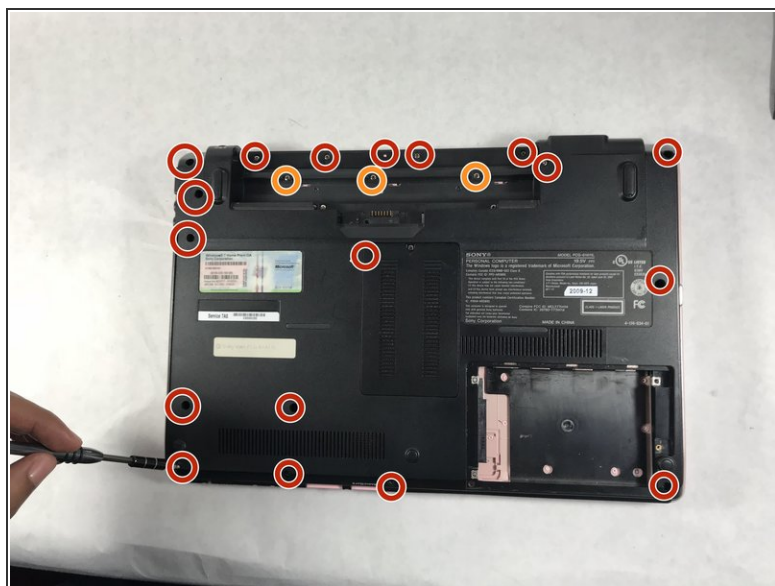
- Using a PH0 screwdriver, remove the four 3mm silver screws located in the external hard drive cover.
- Using a PH00 screwdriver, remove the final 3mm black screw located in the top right section of the hard drive cover.
- Carefully remove the silver hard drive cover.

## Step 6



- Detach the hard drive by disconnecting it from the motherboard, pulling it gently from left to right.

## Step 7 — Optical Disc Drive



- Remove the 5mm screws with the PH0 screwdriver.
- Remove the 3mm screws with the PH0 screwdriver.

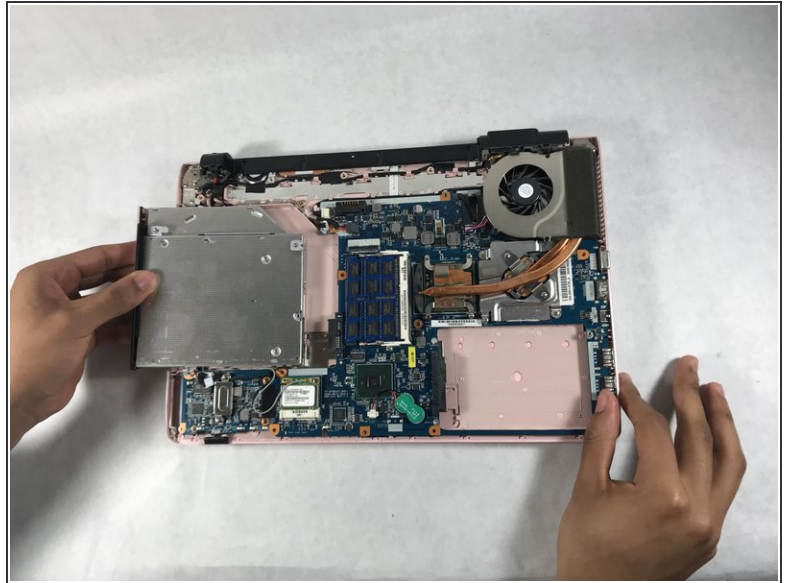
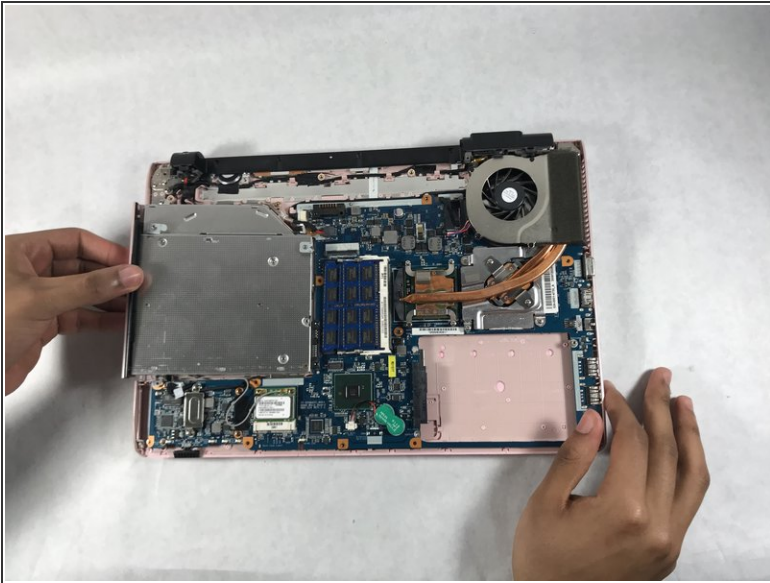
## Step 8



- Lift the backplate from bottom right and left corner and remove it from the laptop.

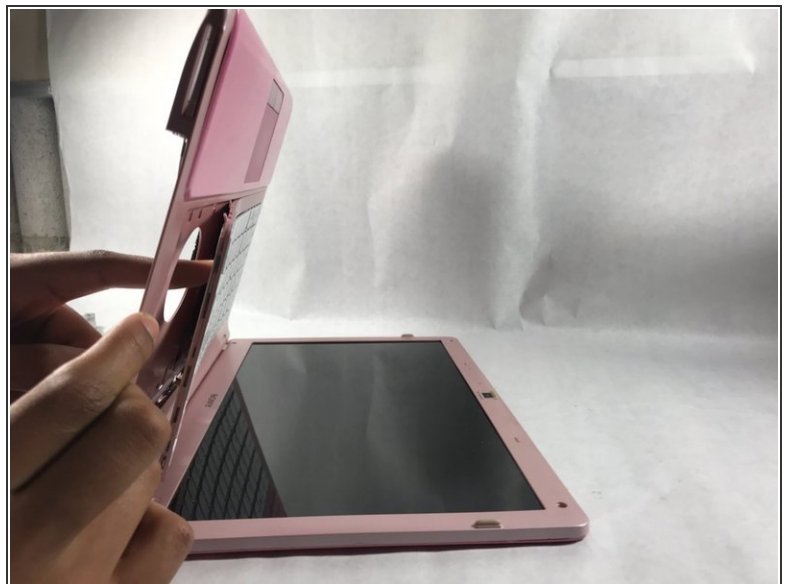
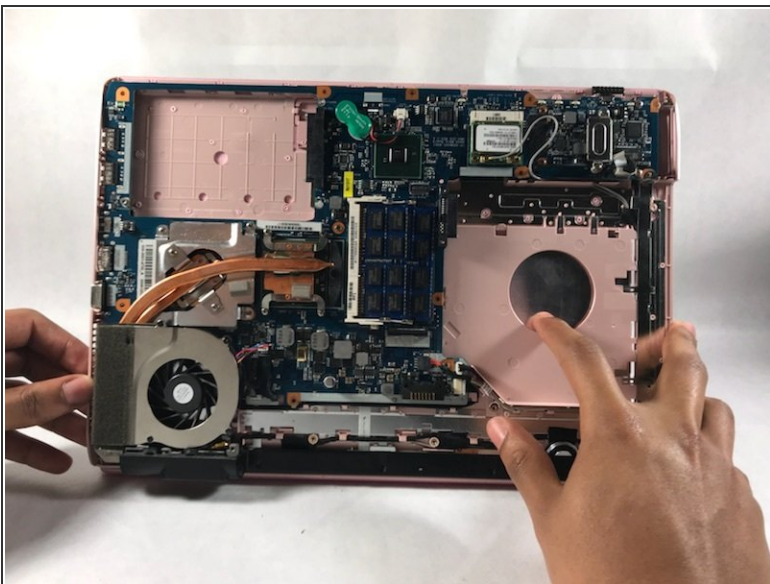


## Step 9



- Slide your finger from the right of the optical disc and pull the optical disc from right to left.

## Step 10 — Keyboard



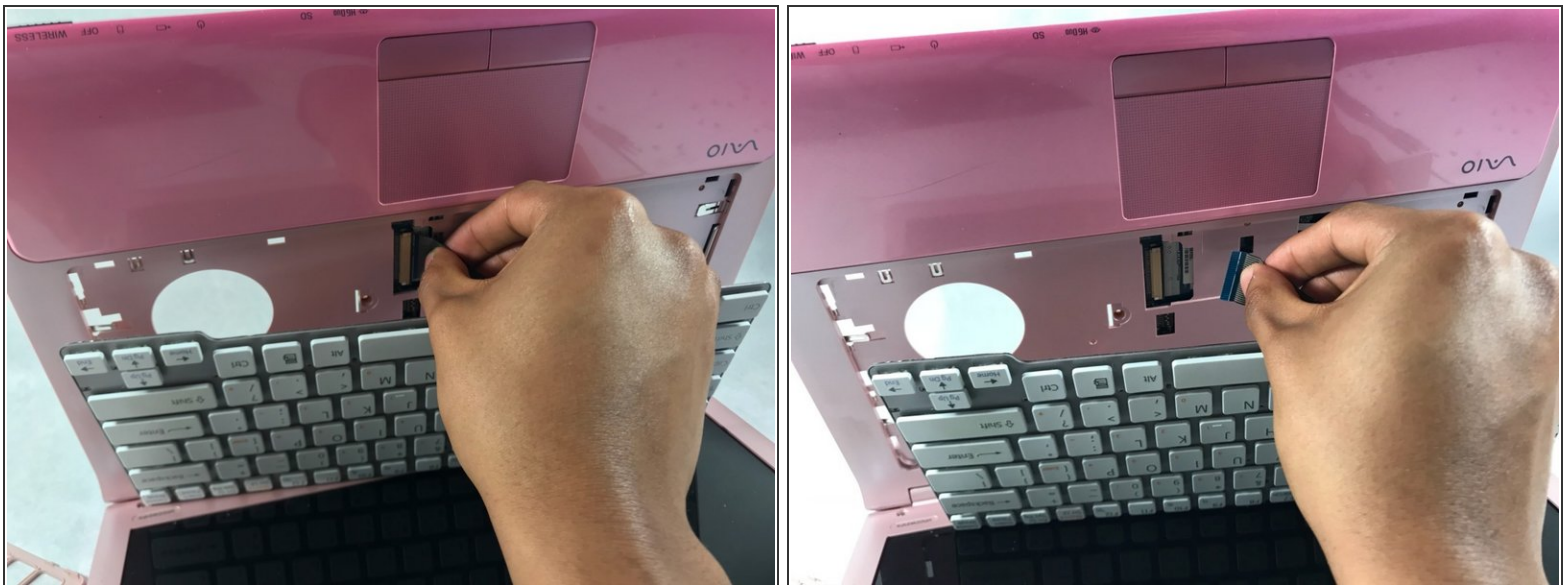
- Push keyboard out from the hole located in the optical drives original location.

## Step 11



- Remove the keyboard cover by gently pulling along the sides until it is removed completely.

## Step 12



- Disconnect the keyboard by pulling the connection wire in the opposite direction of where it's connected.

To reassemble your device, follow these instructions in reverse order.