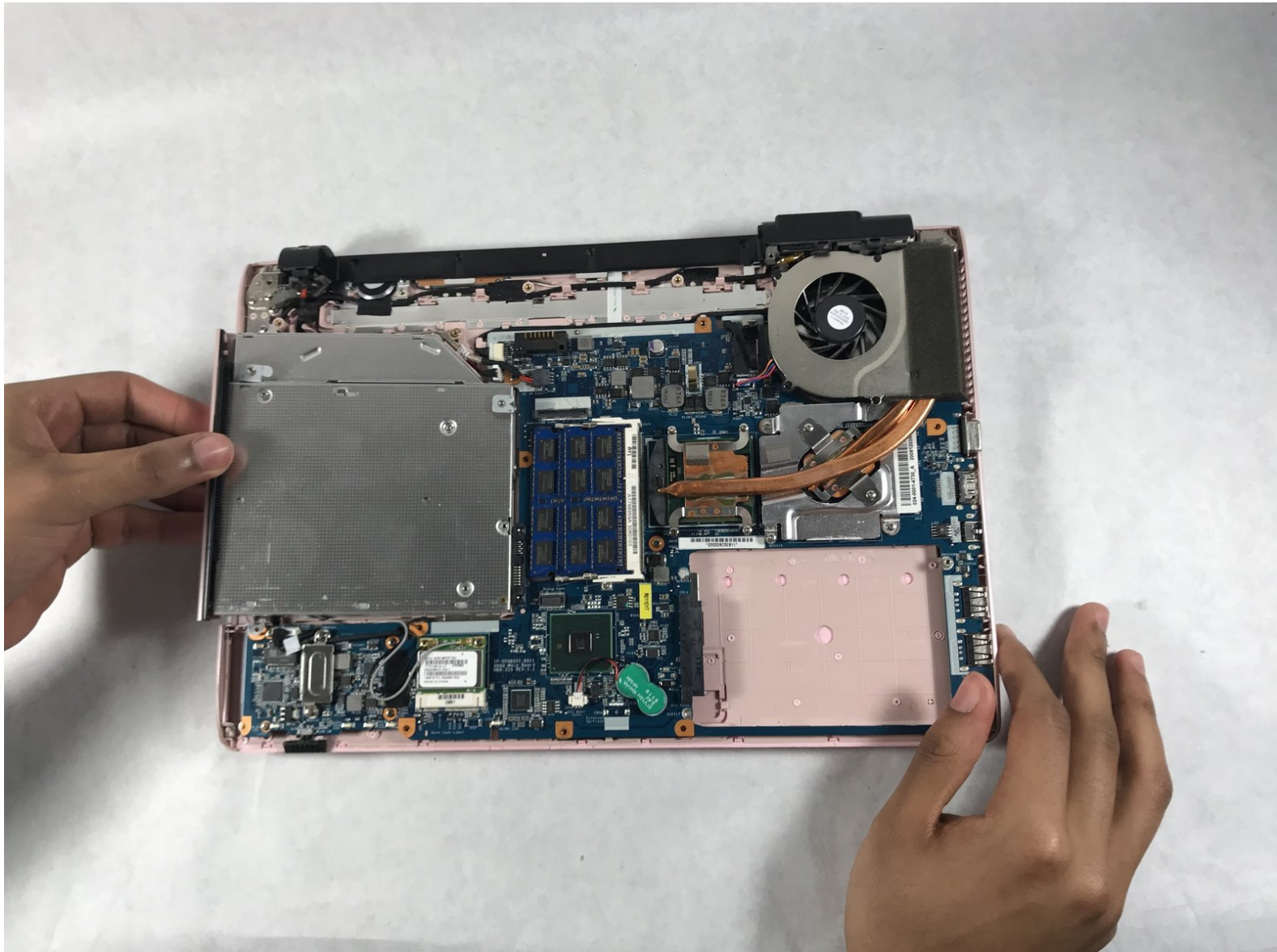




Sony Vaio PCG-61411L Optical Disc Drive Replacement

How to replace a Sony Vaio PCG-61411L optical disc drive.

Written By: Patrick Jean Baptiste



INTRODUCTION

The optical disc drive allows your laptop to read and play discs. This is a guide to help you replace the component if you encounter functionality issues.




TOOLS:

- [Phillips #00 Screwdriver](#) (1)
 - [Phillips #0 Screwdriver](#) (1)
-

Step 1 — Battery



 Be sure to disconnect the device charger and power down the device before beginning.

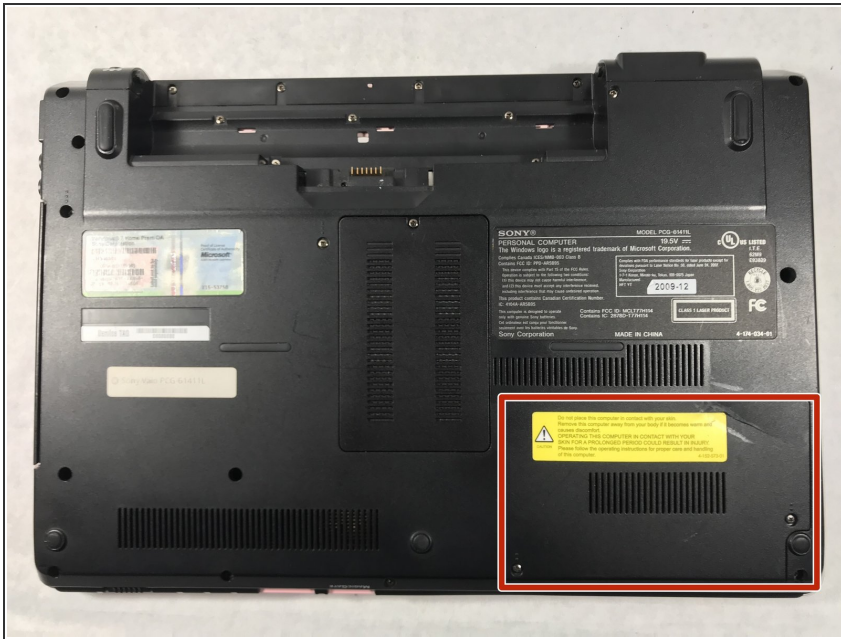
- Turn the device over onto its back, where the battery is at the top of the device. Slide the "lock" switch to the right.

Step 2



- Slide the "release" switch to the left and gently lift the battery up to remove it.
- Completely remove the battery from the device.

Step 3 — Hard Drive



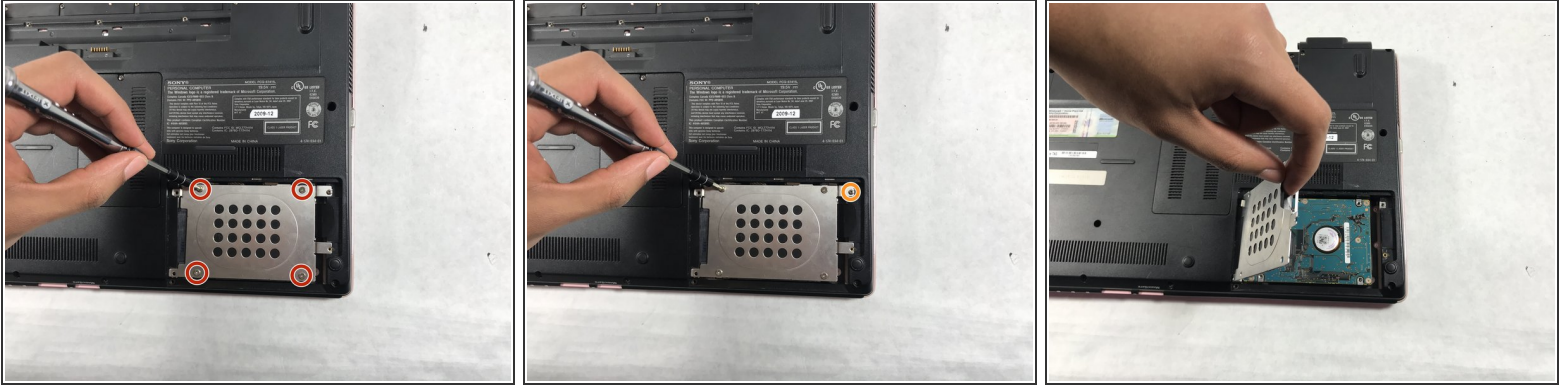
- The hard drive panel is located in the bottom right corner of the device.

Step 4



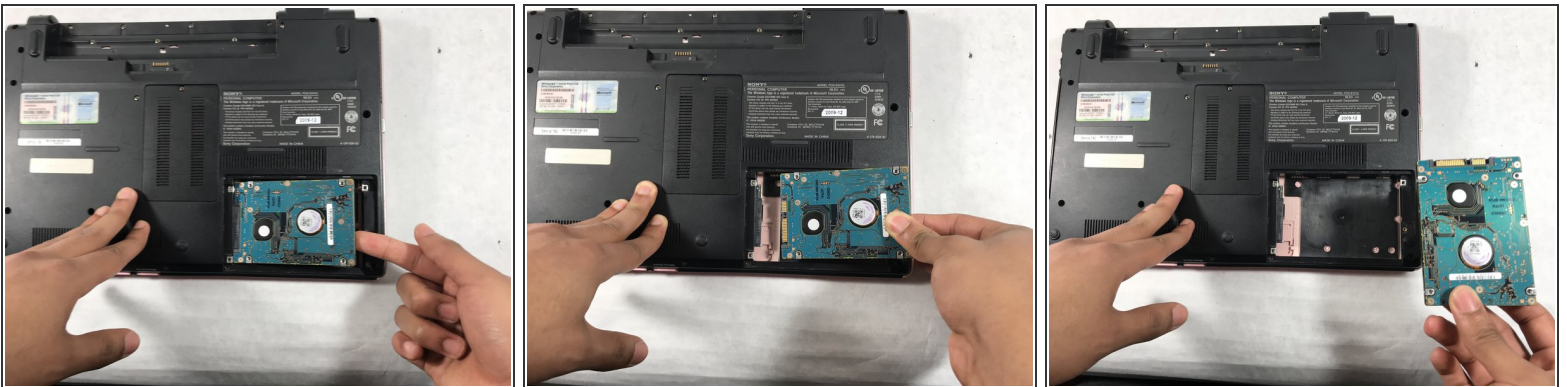
- Using the PH #0 screwdriver, unscrew the two 6.5mm screws located in the bottom left and middle right of the panel. The screws remain in the panels.
- Remove the panel by pulling it up towards yourself.

Step 5



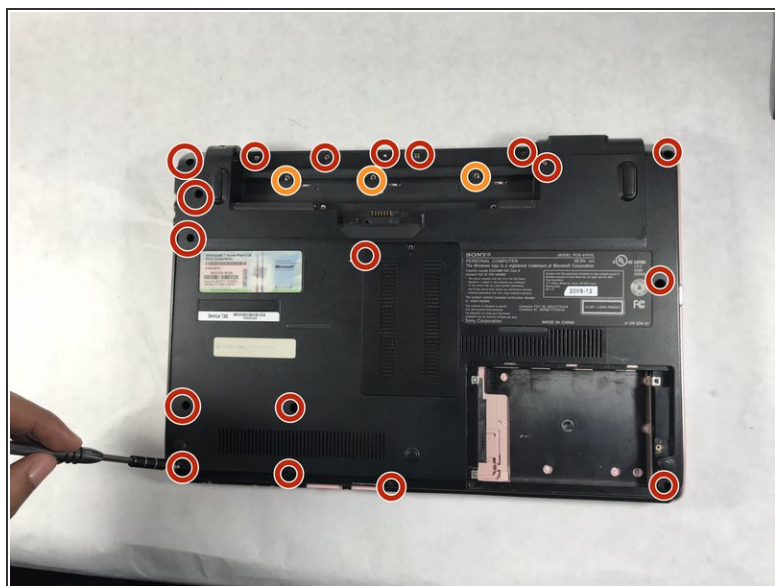
- Using a PH0 screwdriver, remove the four 3mm silver screws located in the external hard drive cover.
- Using a PH00 screwdriver, remove the final 3mm black screw located in the top right section of the hard drive cover.
- Carefully remove the silver hard drive cover.

Step 6



- Detach the hard drive by disconnecting it from the motherboard, pulling it gently from left to right.

Step 7 — Optical Disc Drive



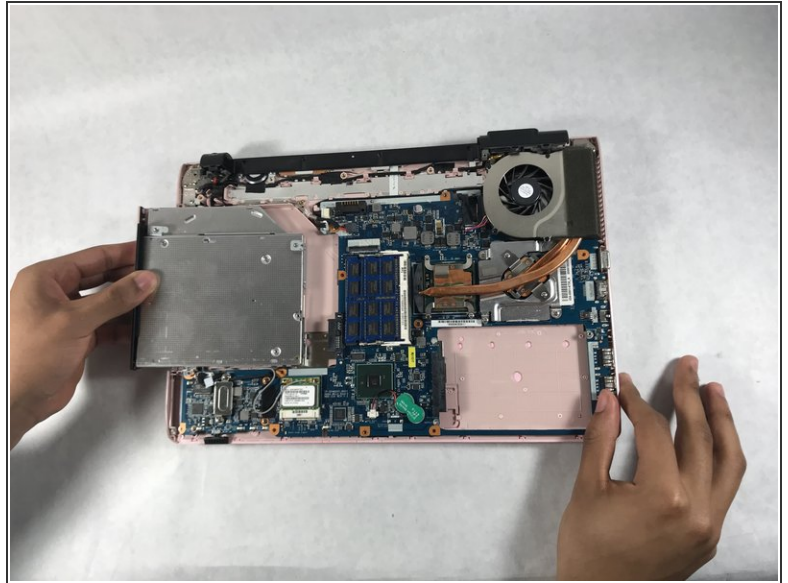
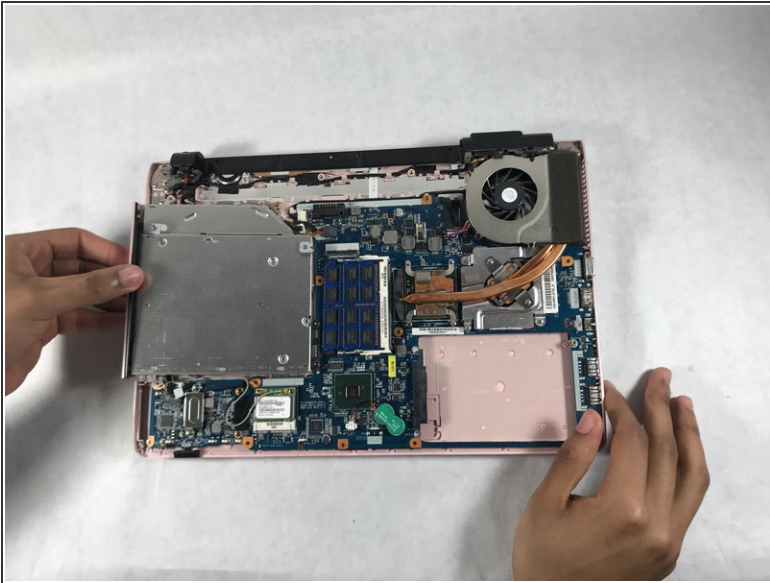
- Remove the 5mm screws with the PH0 screwdriver.
- Remove the 3mm screws with the PH0 screwdriver.

Step 8



- Lift the backplate from bottom right and left corner and remove it from the laptop.

Step 9



- Slide your finger from the right of the optical disc and pull the optical disc from right to left.

To reassemble your device, follow these instructions in reverse order.