



Sony Vaio PCG-6J2L Hard Drive Replacement

Written By: Ashley Brooks



INTRODUCTION

If you have not fixed your problem through our [Troubleshooting Guide](#), then you may have to replace your Hard Drive.

Hazards

Keep out of reach of children and pets.

DO NOT attempt to teardown or repair your device under the influence of drugs or alcohol.

DO NOT ingest any parts of the system.

Use the correct tools as stated in the tools section.

DO NOT touch any gold connectors on interior or exterior of the system.

Make sure system is unplugged before performing any maintenance on the system.

NOTICE

Make sure your replacement hard drive is a serial ATA hard drive (SATA). Any other hard drive will be incompatible.



TOOLS:

- [TR10 Torx Security Screwdriver](#) (1)
- [Spudger](#) (1)
- [Phillips #00 Screwdriver](#) (1)



PARTS:

- [1 TB SSD / Upgrade Bundle](#) (1)
- [250 GB SSD / Upgrade Bundle](#) (1)
- [500 GB SSD / Upgrade Bundle](#) (1)
- [2 TB SSD / Upgrade Bundle](#) (1)

Step 1 — Battery



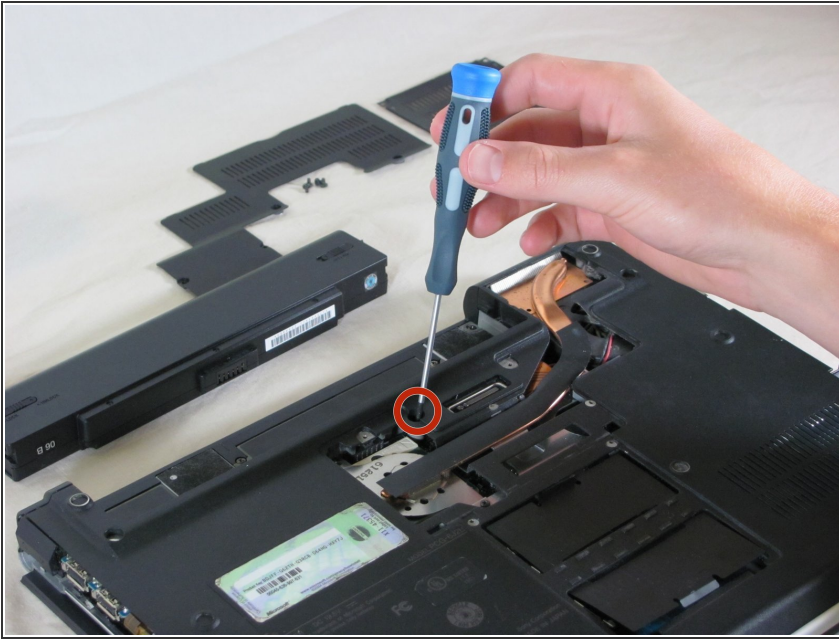
- Set the computer display-side down.
- Unlock the battery by sliding the port-side latch to the 'unlock' position.

Step 2



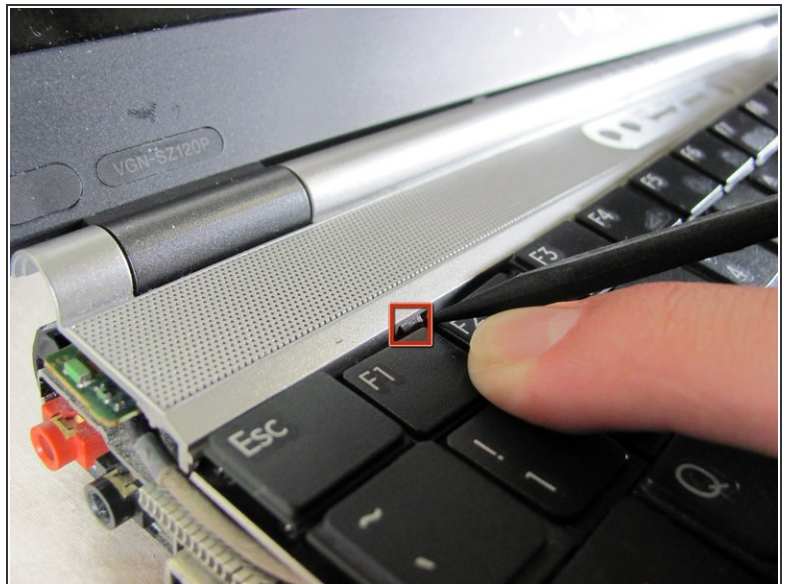
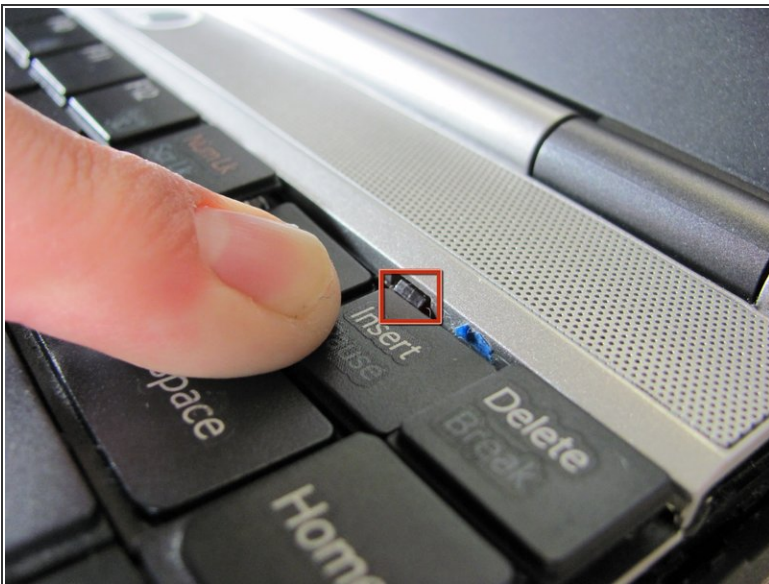
- On the opposite side of the battery, press the release latch and slide the battery away from the main body to remove.

Step 3 — Keyboard



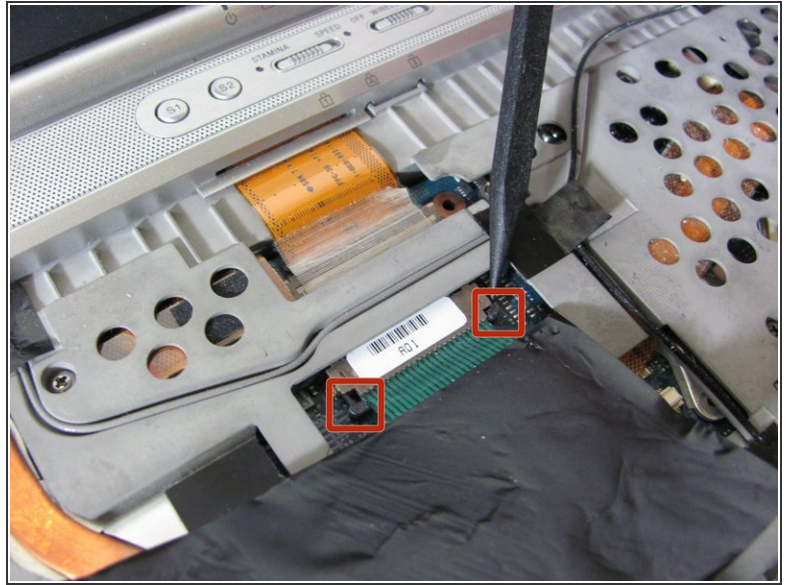
- ❗ Ignore the removal of the heat sink and memory panels as depicted. They do not need to be removed for the completion of this guide.
- Remove the Torx security screw near the center of the battery-side edge.


Step 4



- Press the tabs on each side of the display-side of the keyboard with the flat edge of a spudger.
- Pull the keyboard toward the mouse pad and gently lift up.

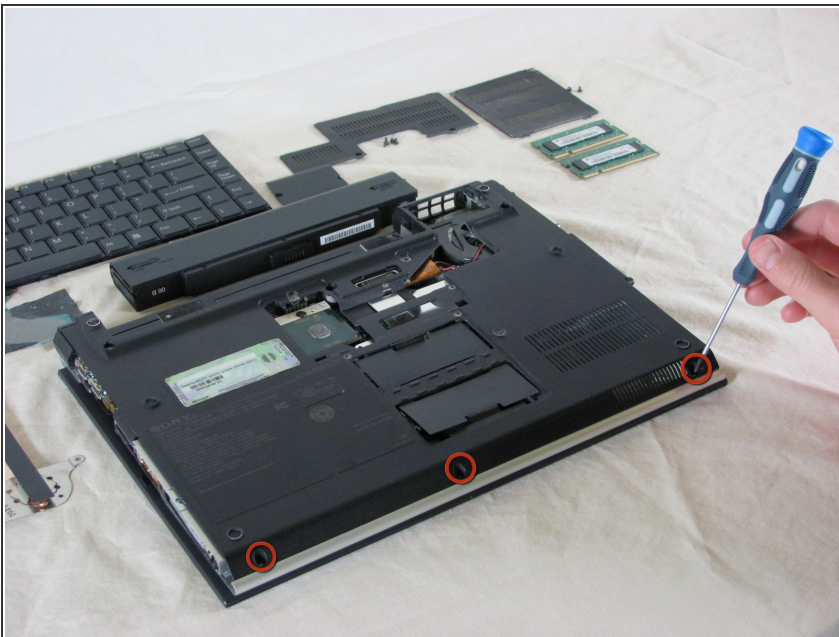
Step 5




 The keyboard is still attached by ribbon cable, don't try to remove the keyboard entirely yet.

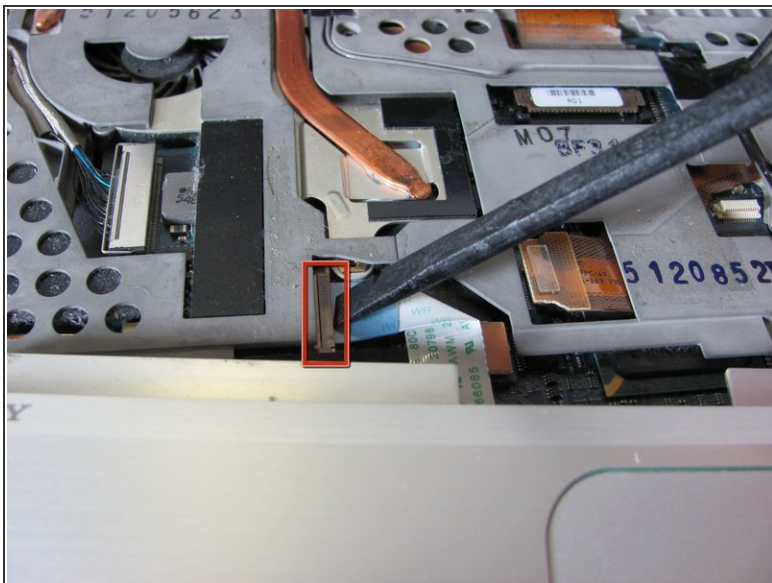
- Disconnect the ribbon cable by pressing the tabs on either side of the connector. Pull the cable out parallel to the connector.
- Remove the keyboard.

Step 6 — Mouse Assembly



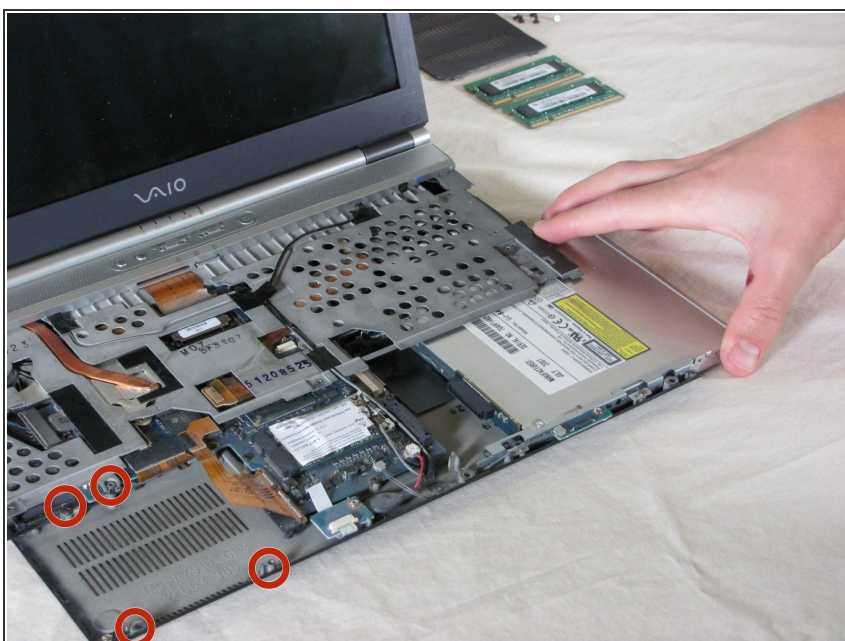
- Turn the laptop upside down.
- Remove the three screws from the front mouse panel located on the bottom of the laptop.
-  Carefully flip the laptop back over. Remove three more screws from the top securing the panel. A ribbon cable will still be attached to the panel when you remove it.

Step 7



- Lift the mouse assembly just enough to access the connecting ribbon cable.
- Lift the ribbon cable lock to remove the cable.
- Carefully remove the mouse panel assembly and set aside.

Step 8 — Hard Drive



- ⓘ This is where your hard drive would be located. The replacement must be a Serial ATA(SATA) hard drive
- Remove the four hard drive securing screws.

To reassemble your device, follow these instructions in reverse order.