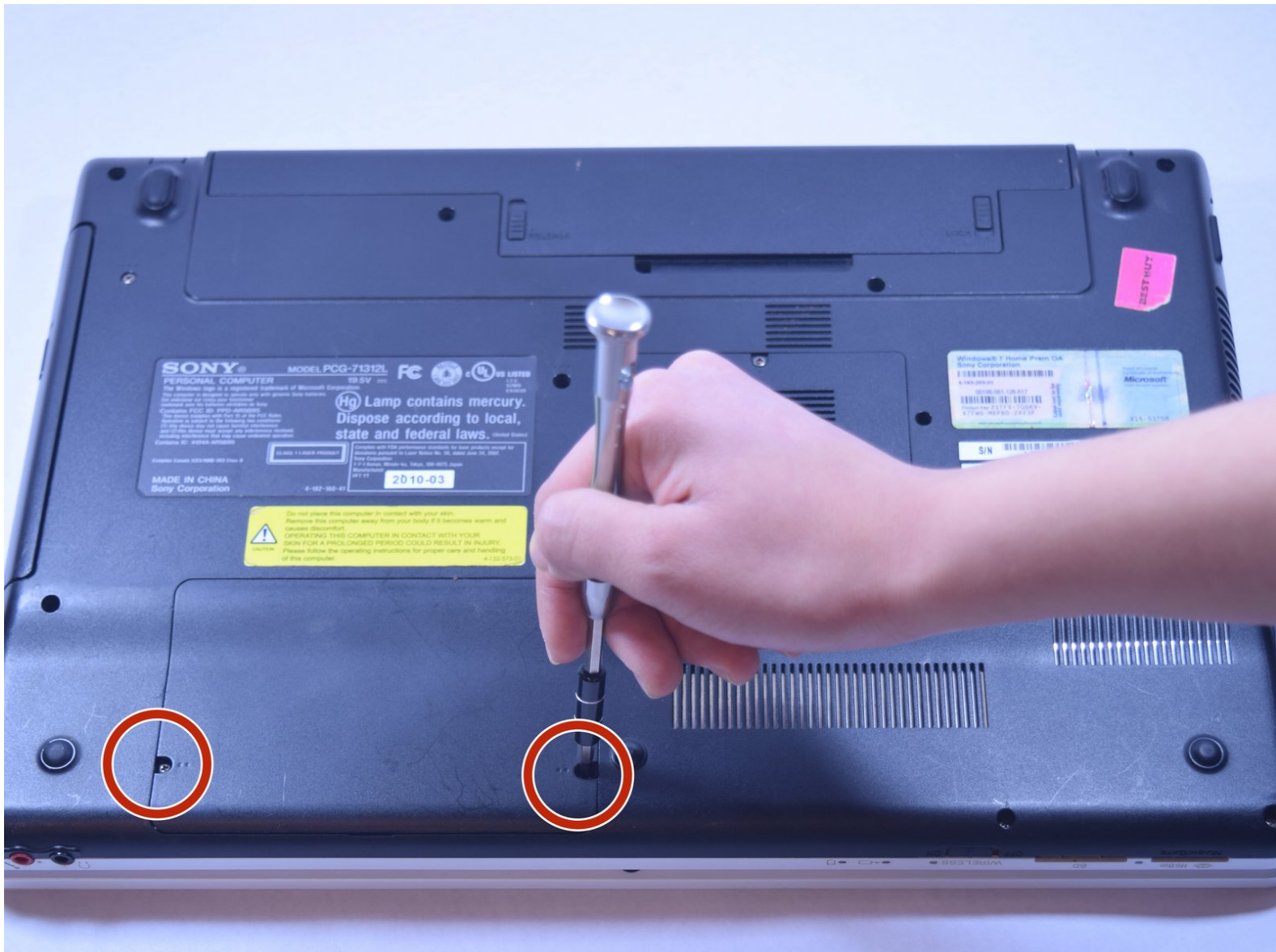




# Sony Vaio PCG-71312L Hard Drive Replacement

This guide covers the removal of the internal hard drive.

Written By: Maxine Filcher

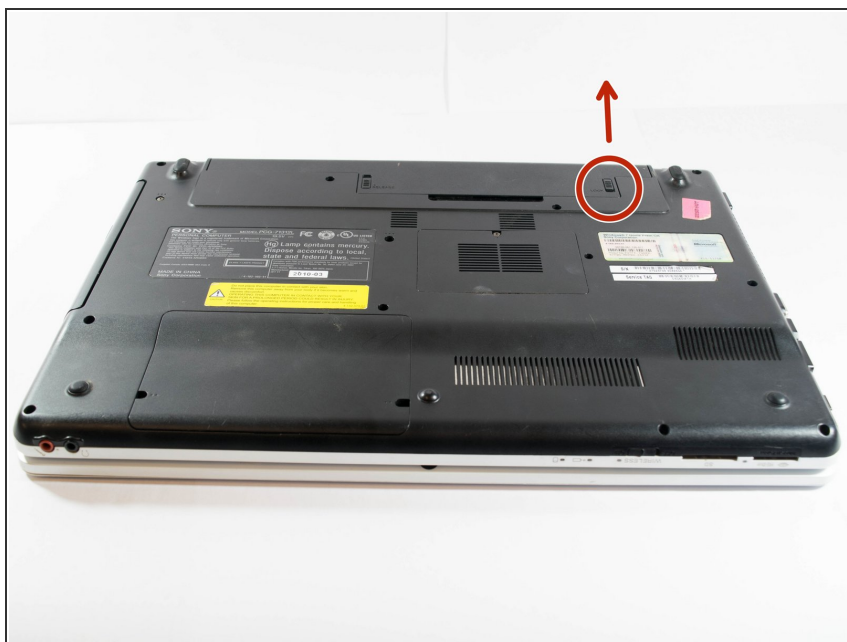




## TOOLS:

- [Phillips #1 Screwdriver](#) (1)
-

## Step 1 — Battery



- ⚠ Power down and disconnect from power supply.
- Use your finger to unlock the tab by pressing the slide away from you.

## Step 2



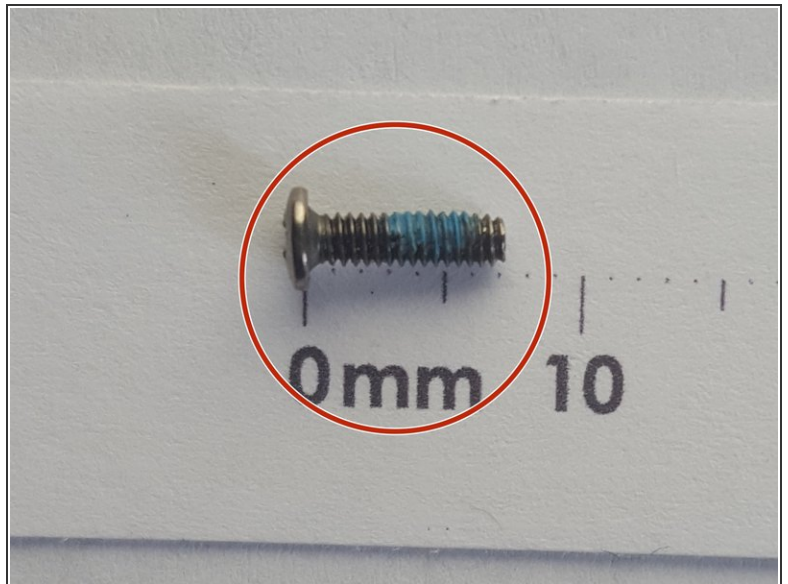
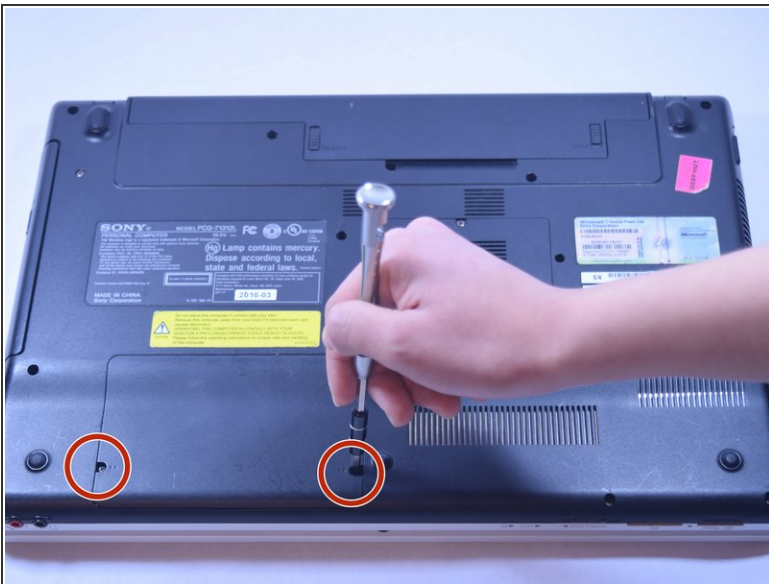
- Hold the release slide, while using thumb to apply upward pressure.

### Step 3



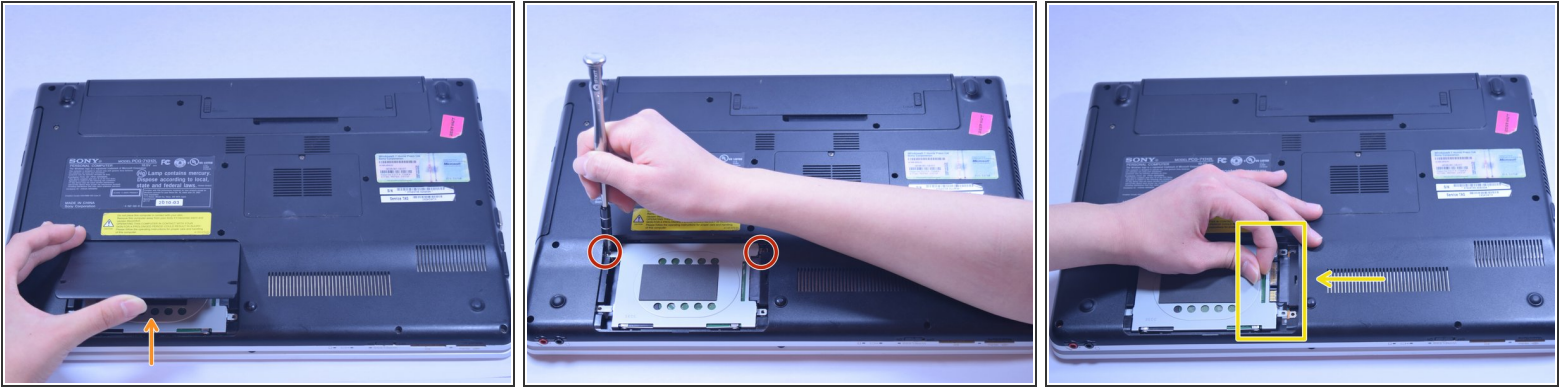
- Pull the battery off.

### Step 4 — Hard Drive



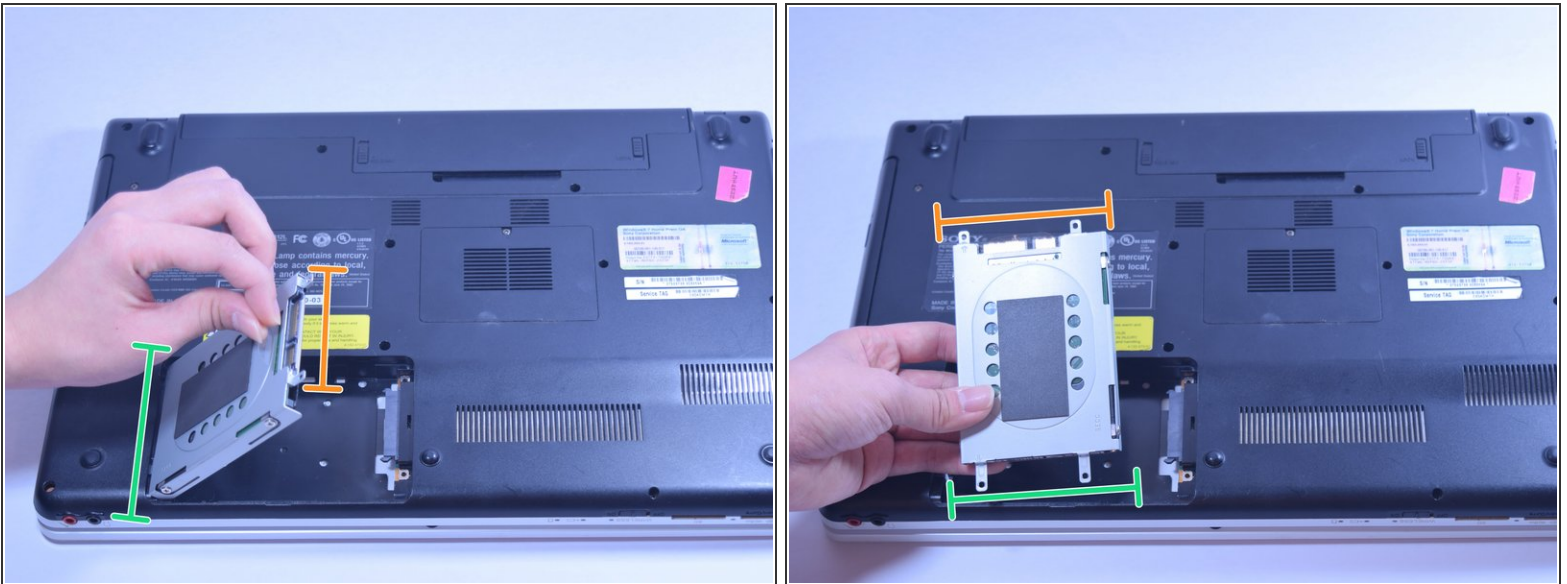
- Using PH 01 remove two 7mm PH screws.

## Step 5



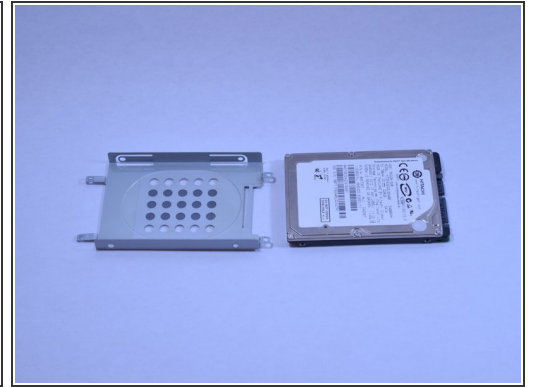
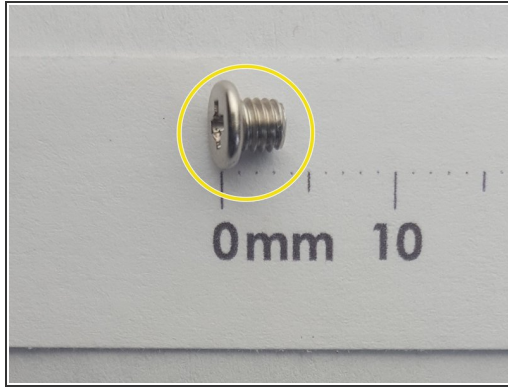
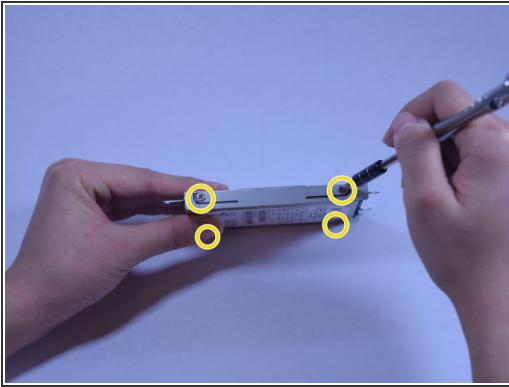
- #1 Use force to push the cap upward.
- #2 Unscrew two 7mm PH screws.
- #3 Pull from the plastic and pull toward the arrow point it direction.


## Step 6




- Lift plug side first.

## Step 7



 Skip to next step if accessing other components.

-  #1 Remove four 3mm PH01 screws from hard drive bracket.

To reassemble your device, follow these instructions in reverse order.