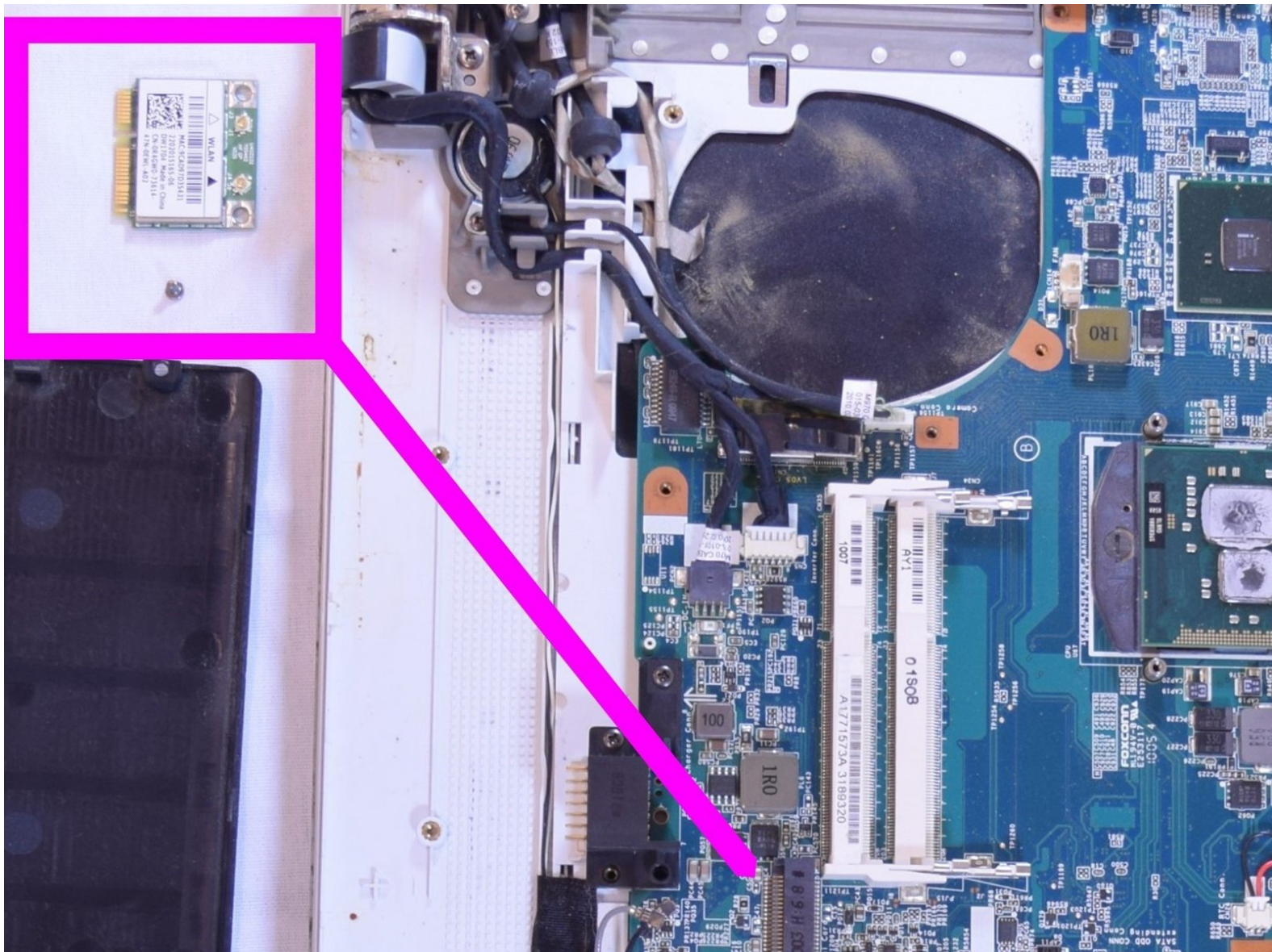




Sony Vaio PCG-71312I Wifi Card Replacement

Detailed guide for the replacement of the internal wifi card. Go to part 2 after step 7 in part 1.

Written By: Maxine Filcher





TOOLS:

- [Phillips #000 Screwdriver](#) (1)
 - [Phillips #1 Screwdriver](#) (1)
-

Step 1 — Battery



- ⚠ Power down and disconnect from power supply.
- Use your finger to unlock the tab by pressing the slide away from you.

Step 2



- Hold the release slide, while using thumb to apply upward pressure.

Step 3



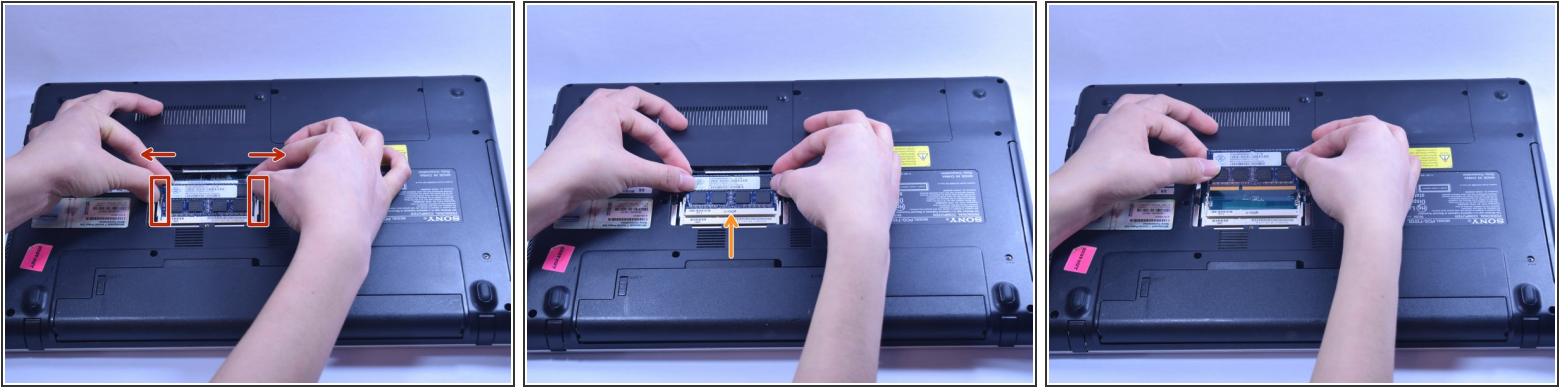
- Pull the battery off.

Step 4 — RAM



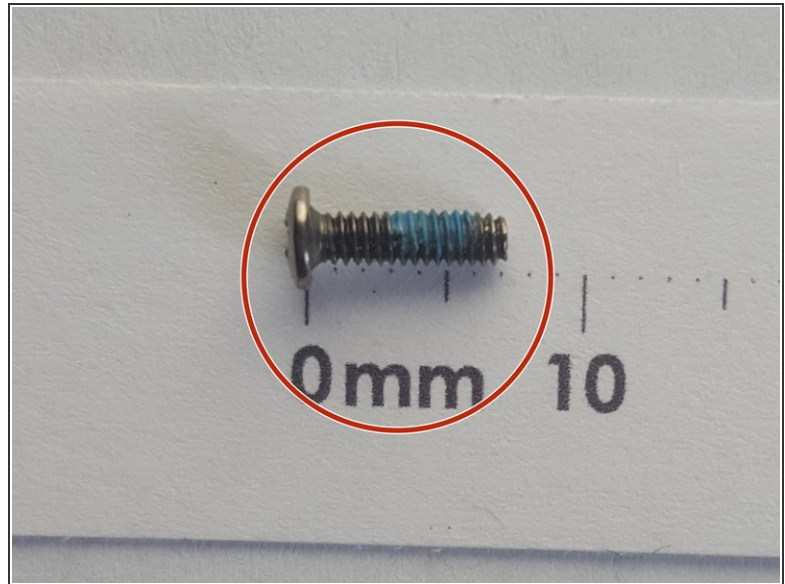
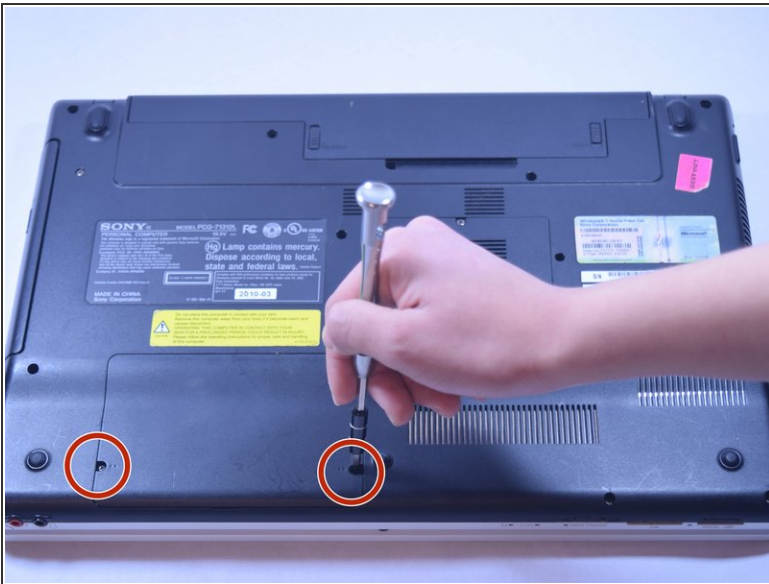
- Unscrew the RAM case
- The case to pop up once you lose up the case

Step 5



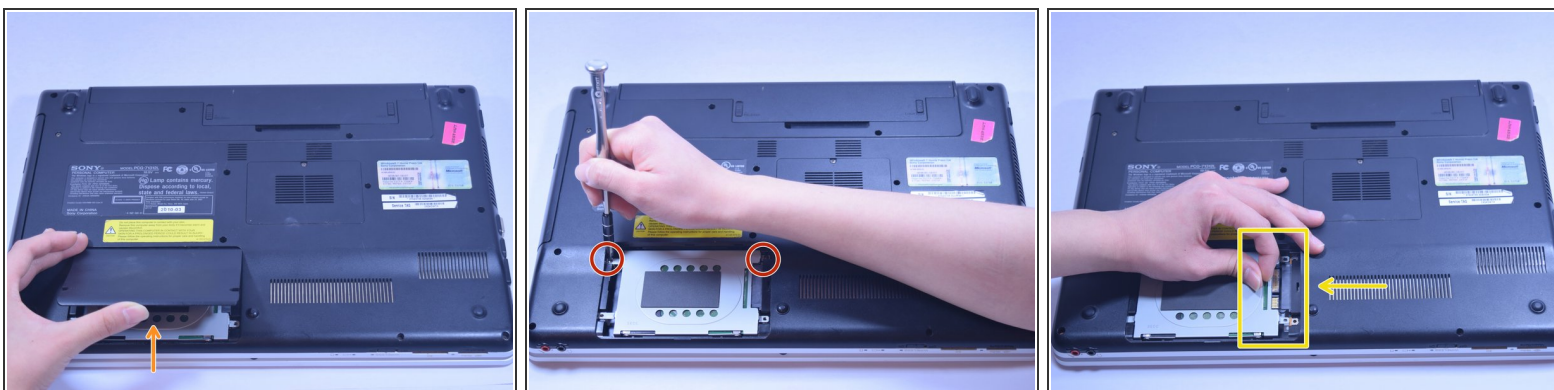
- Use two finger gently to pul the white plastic strap outward with both side.
- Once you pull the strap, the RAM with lose up, you are able to just lift up the RAM
- Once you done with the top, repeat the same step for the bottom

Step 6 — Hard Drive



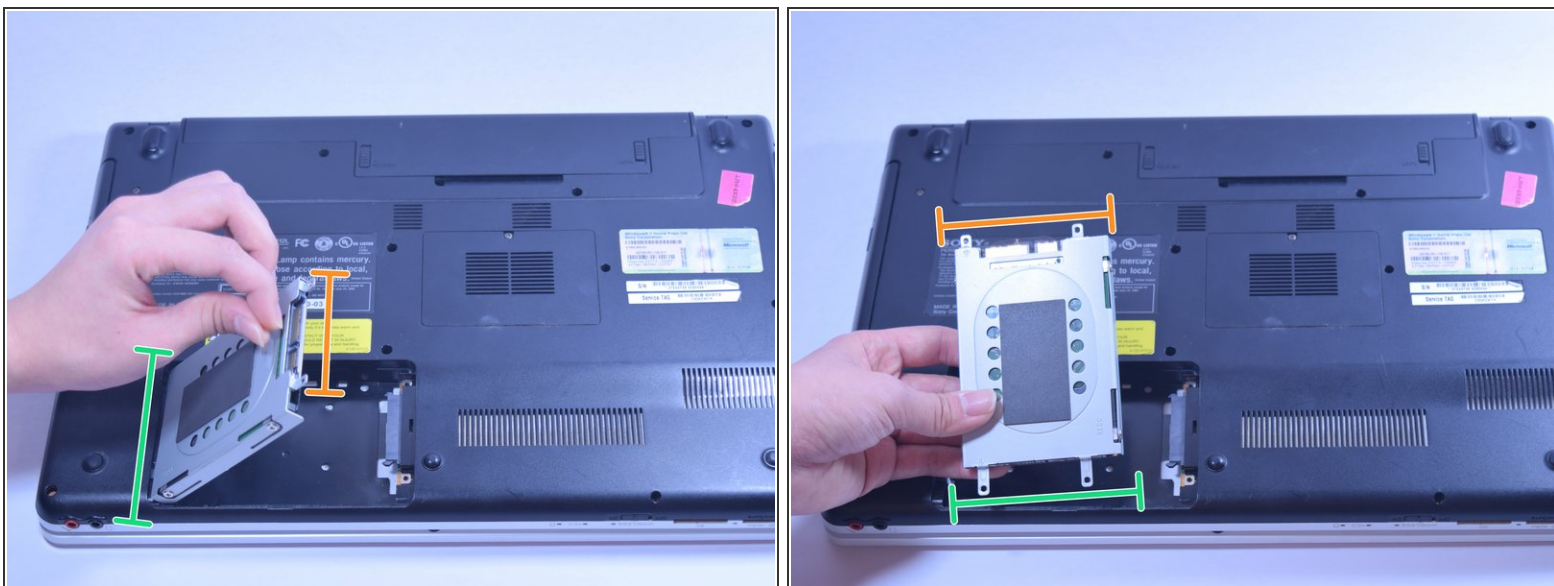
- Using PH 01 remove two 7mm PH screws.

Step 7



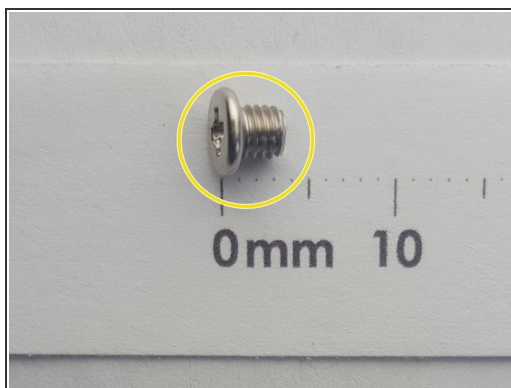
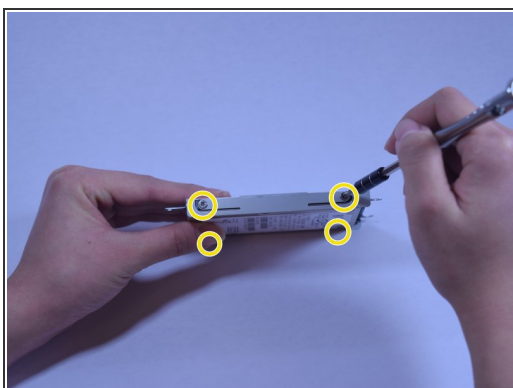
- #1 Use force to push the cap upward.
- #2 Unscrew two 7mm PH screws.
- #3 Pull from the plastic and pull toward the arrow point it direction.


Step 8



- Lift plug side first.

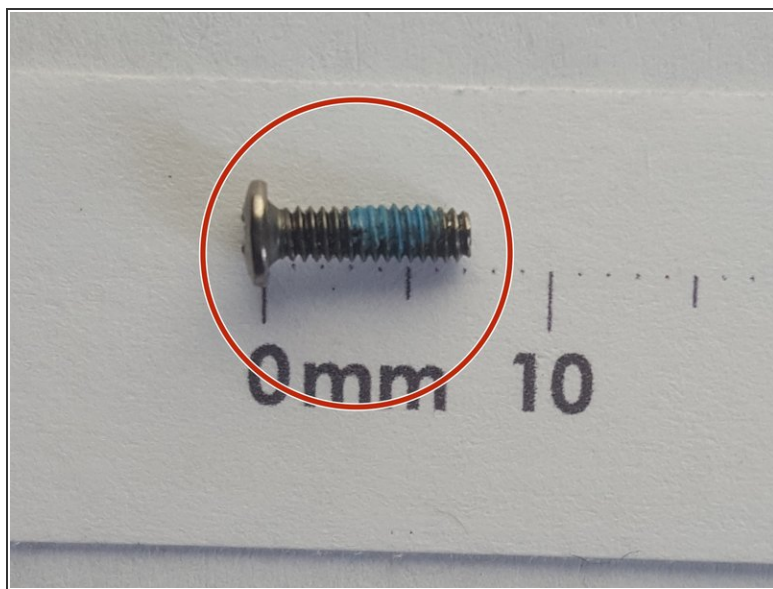
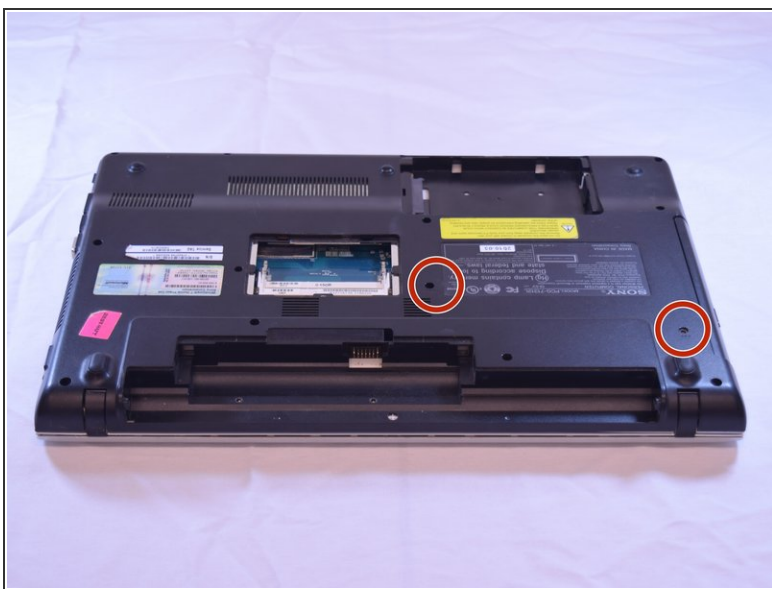
Step 9



 Skip to next step if accessing other components.

- #1 Remove four 3mm PH01 screws from hard drive bracket.

Step 10 — DVD Drive



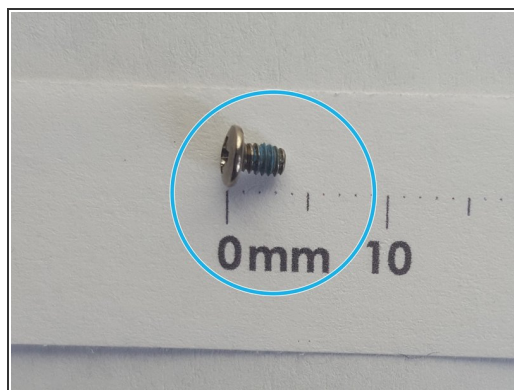
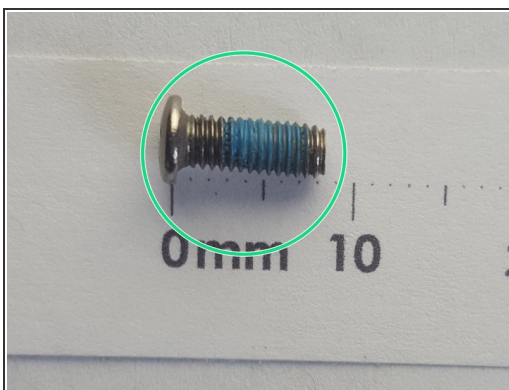
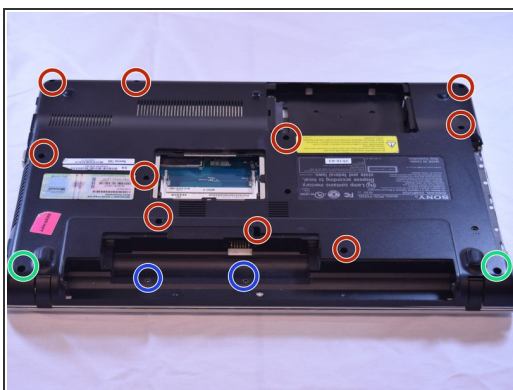
- Remove two 7mm PH01 screws

Step 11



- Grasp the DVD drive's face plate with your fingers, and pull out.

Step 12 — Cooling Fan



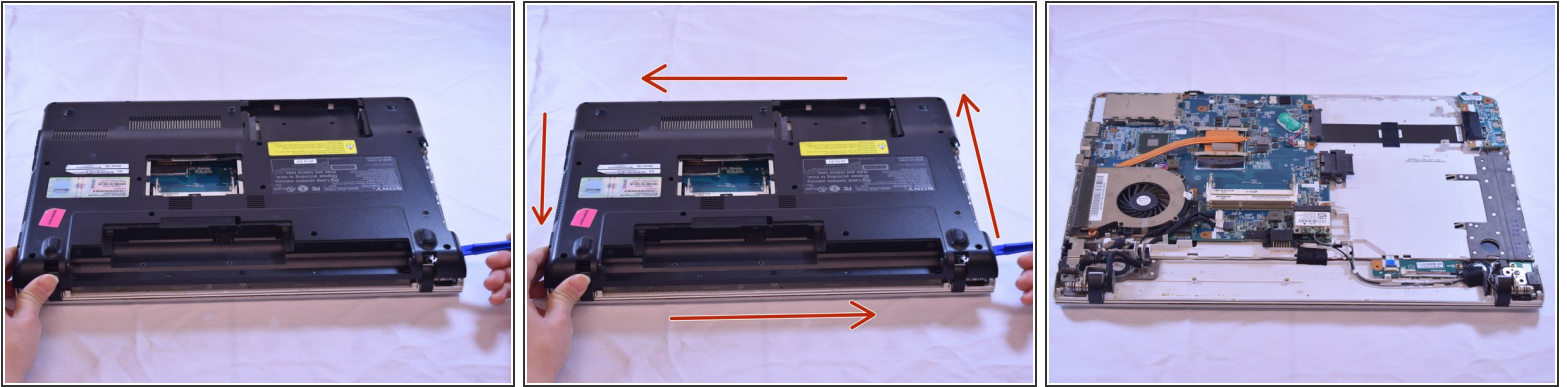
- Remove ten 7mm PH1 screws
- Remove two 8mm PH1 screws
- Remove two 3mm PH1 screws

Step 13



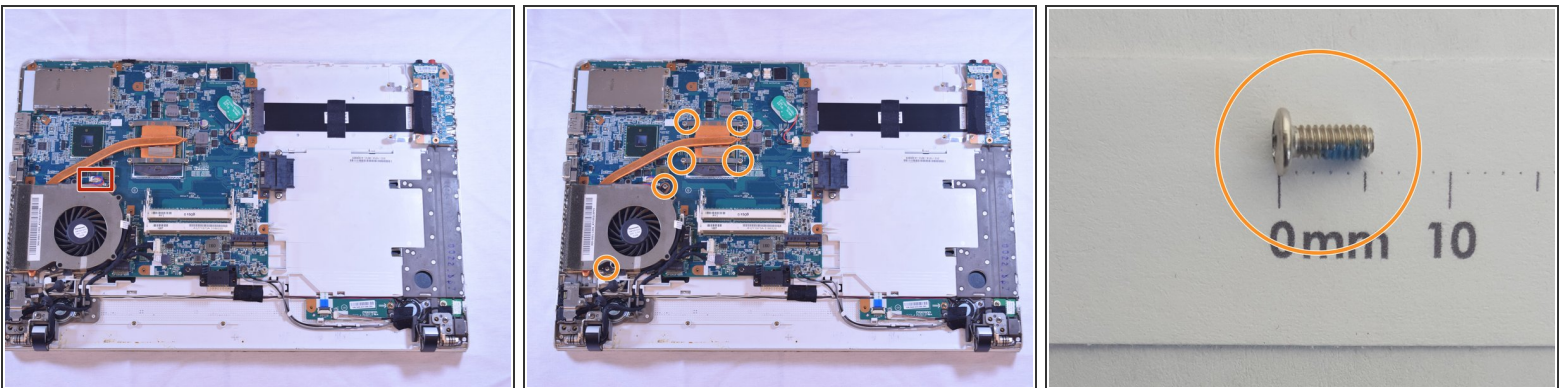
- Remove SD card slot block.
- Push in until it releases.
- Then pull out to remove.

Step 14



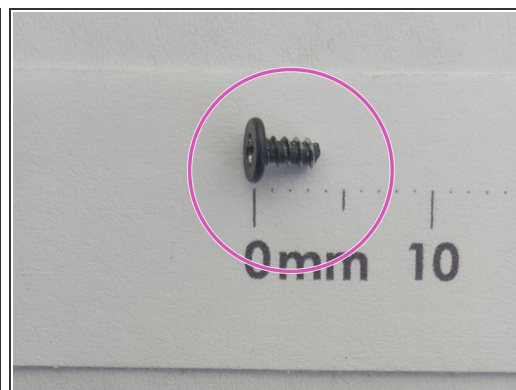
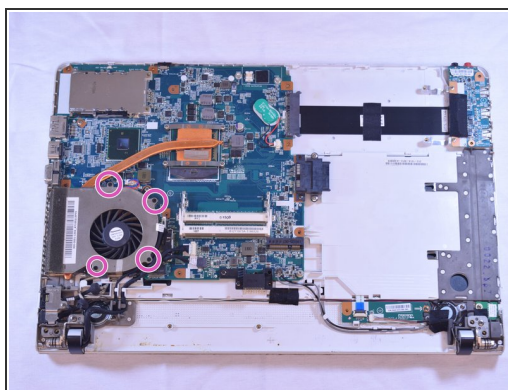
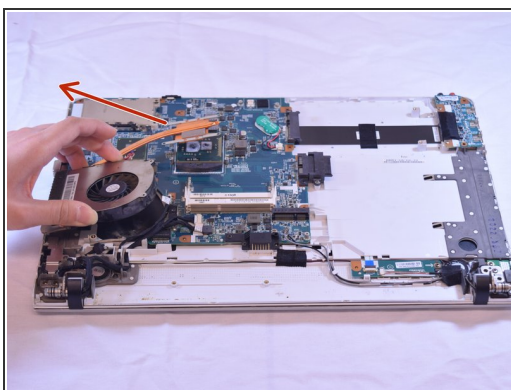
- Start by finding a loose corner, to work you prying tool into.
 - Then work the tool around the sides to release cover. You may need a second tool to help keep your loose corner open.
 - Lift cover away.
- (i) NOTE:** If you are attempting to access other components, skip 2 steps.

Step 15



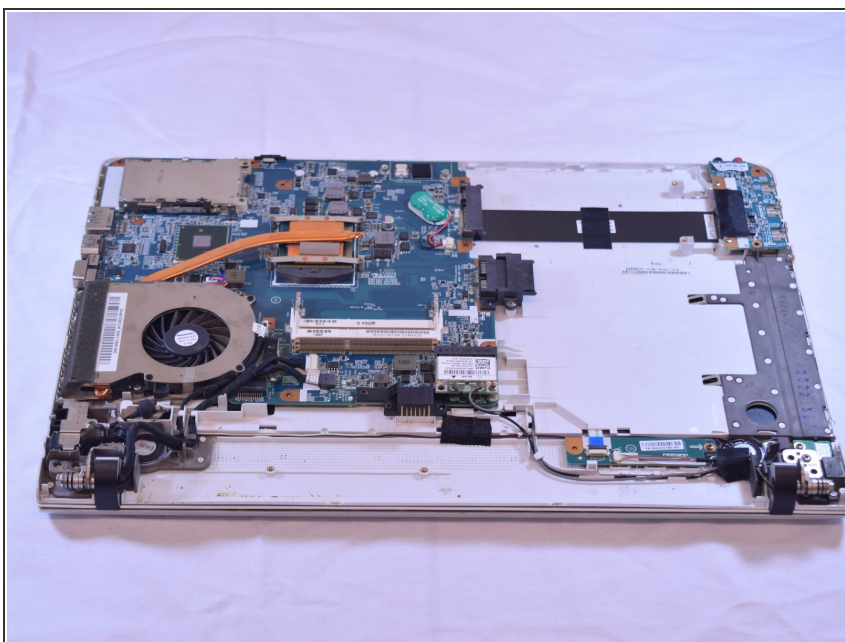
- Remove this plug using a prying tool.
- Remove seven 5mm PH01 screws.


Step 16



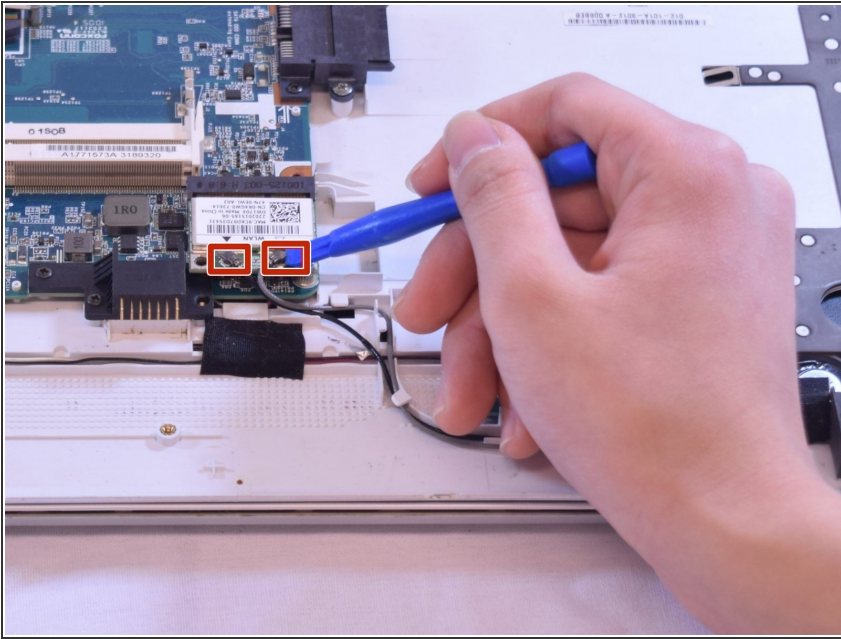
- To break the thermal paste, apply gentle constant upward force until it comes free.
- Remove four 3.5mm PH000 screws to access cooling fan.

Step 17 — Wifi Card



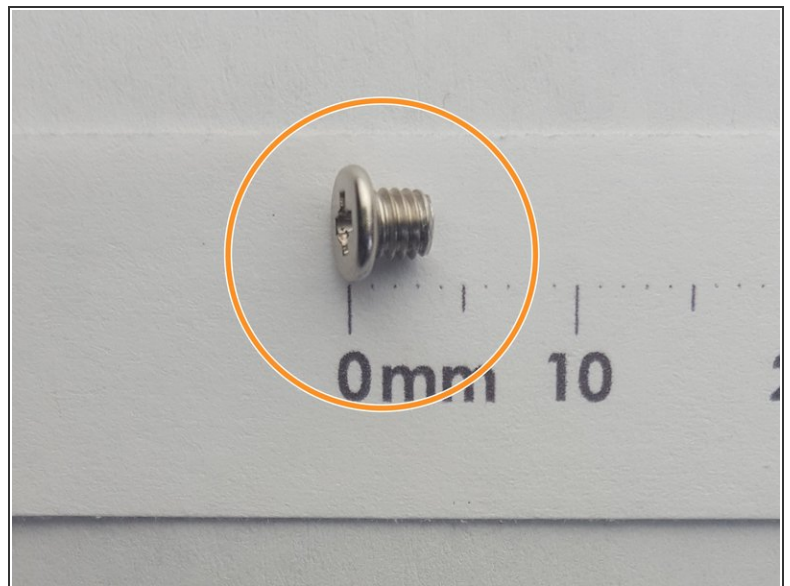
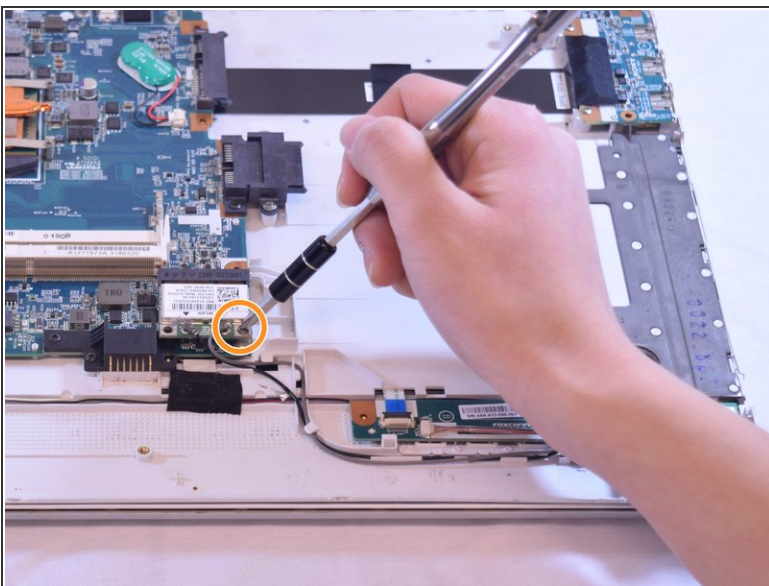
 Continuing from Step 3.

Step 18



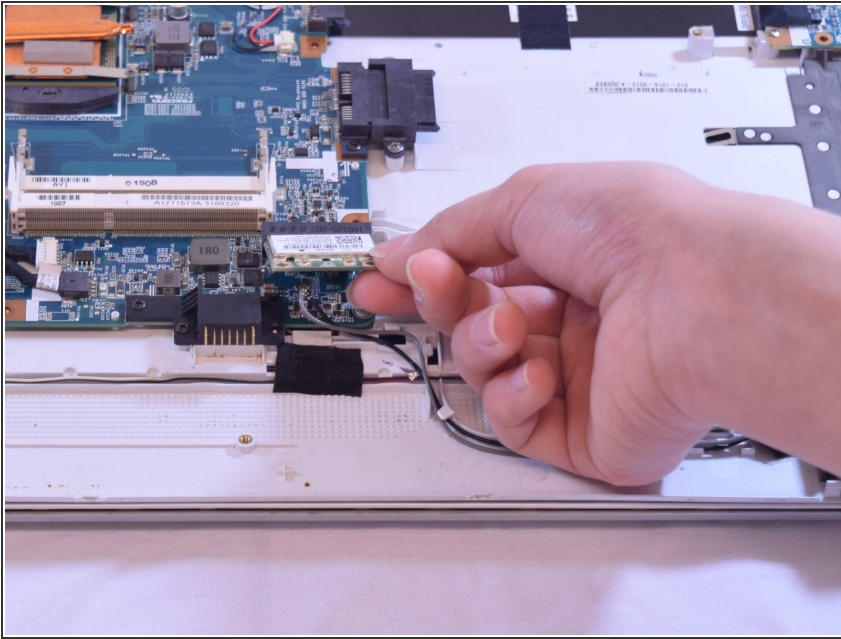
- Carefully remove the antenna plugs.

Step 19



- Remove single 3mm PH01 screw.

Step 20



- Remove Wifi Card.

To reassemble your device, follow these instructions in reverse order.