



Sony Vaio PCG-71713L LCD Screen Replacement

How to remove and install a new screen for a Sony Vaio laptop.

Written By: Eric Martinez



INTRODUCTION

Watch out for applying too much pressure to your screen because it is possible to damage the screen by applying pressure or by bending the screen.



TOOLS:

- [Phillips Head Screwdriver: Size PH1](#) (1)
 - [Metal Spudger](#) (1)
-

Step 1 — LCD Screen



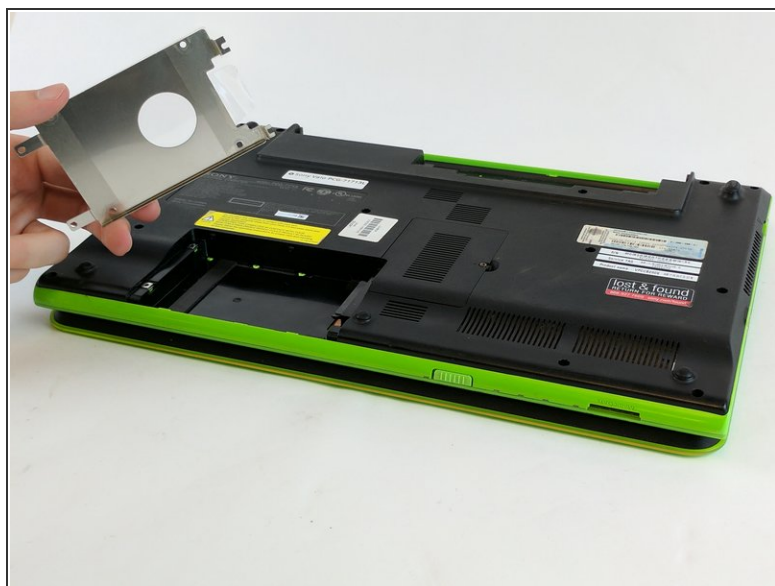
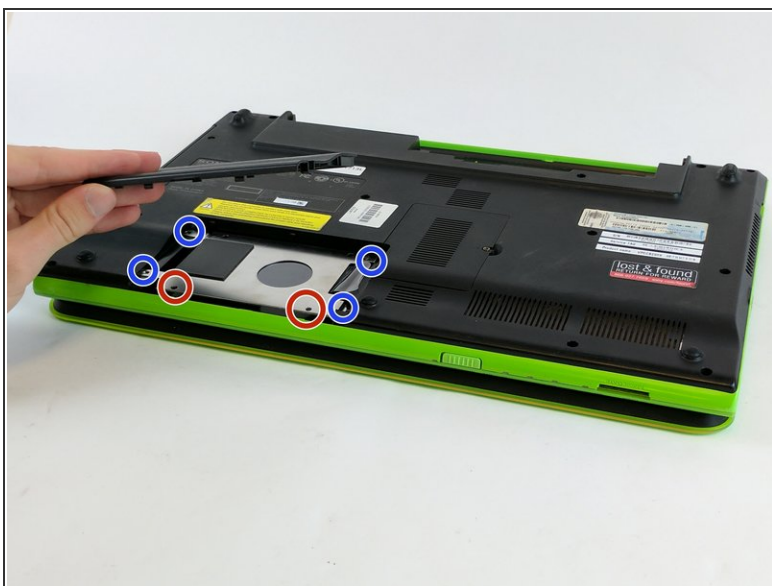
- First make sure the laptop is off and closed.

Step 2



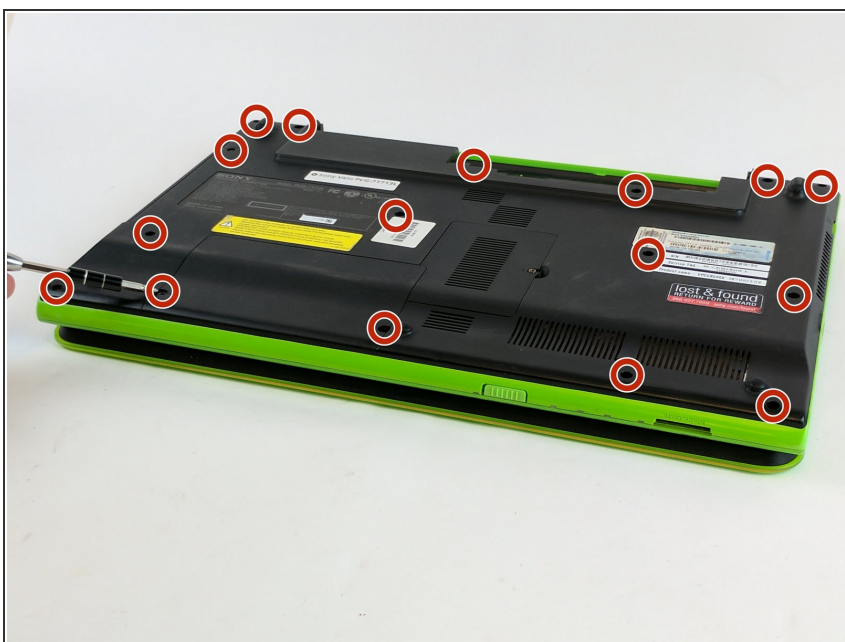
- Unlock the battery and push the release lever to remove the battery from the laptop.

Step 3



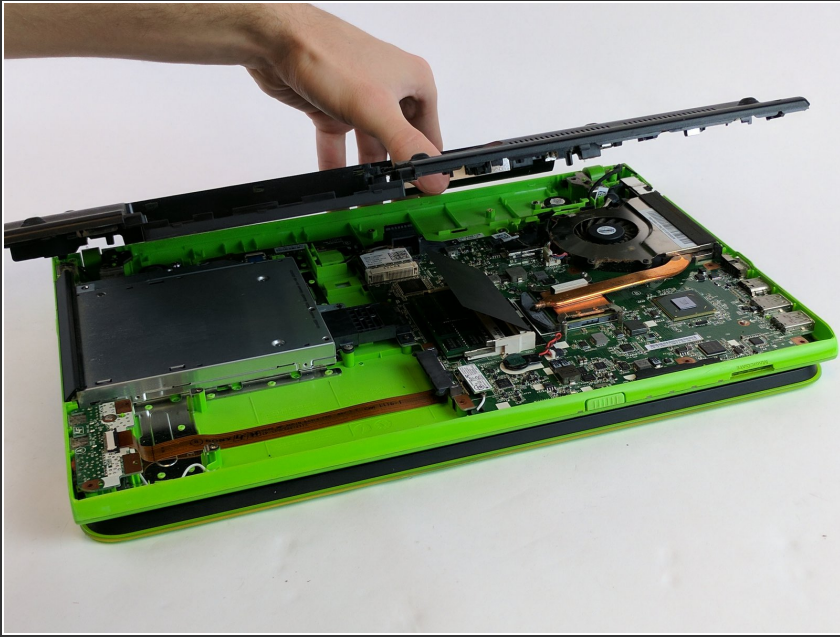
- Remove the screws marked in red to remove the hard drive cover and the screws marked in blue to loosen the hard drive. Then gently slide the hard drive out.

Step 4



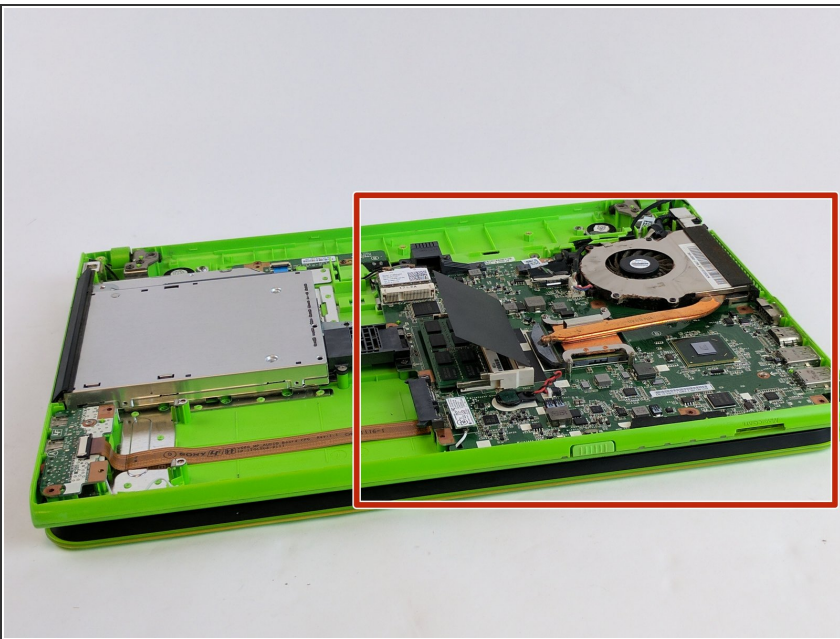
- Remove all the screws that hold the plastic bottom on. There are some more screws that cant be seen in the photo.

Step 5



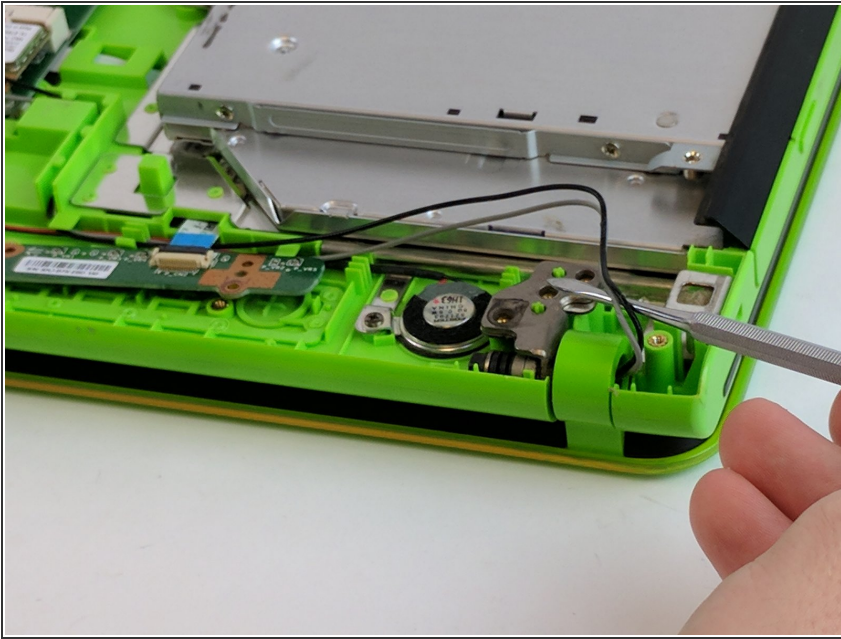
- Gently pry up the plastic bottom and if it feels like it is resisting check the surrounding areas for more screws.

Step 6



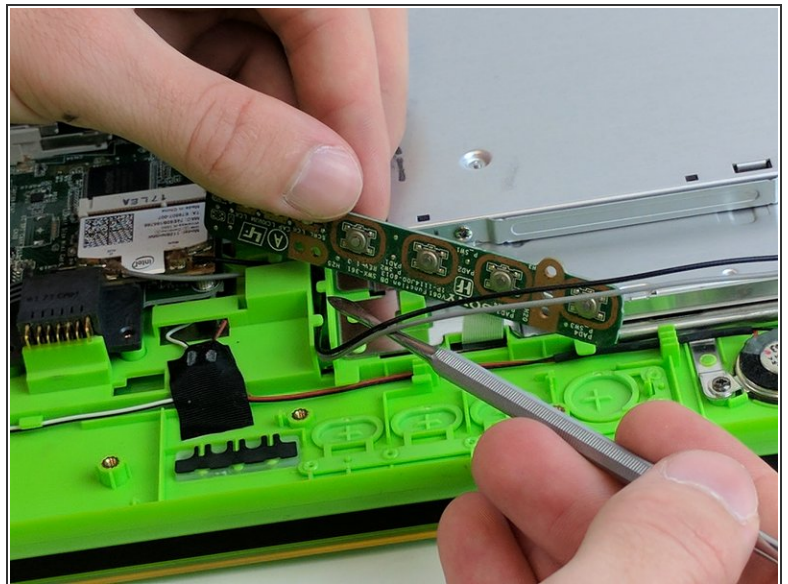
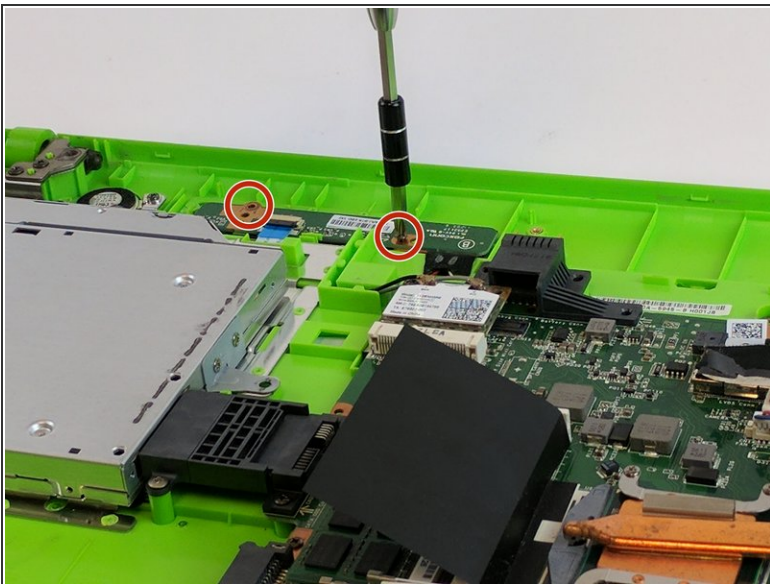
- Now that the backing plate is off make sure to be careful of the Motherboard and its components from being damaged. from here on out it is recommended that you wear a anti static bracelet or at the very least touching something metal to remove any static electricity that you may have built up

Step 7



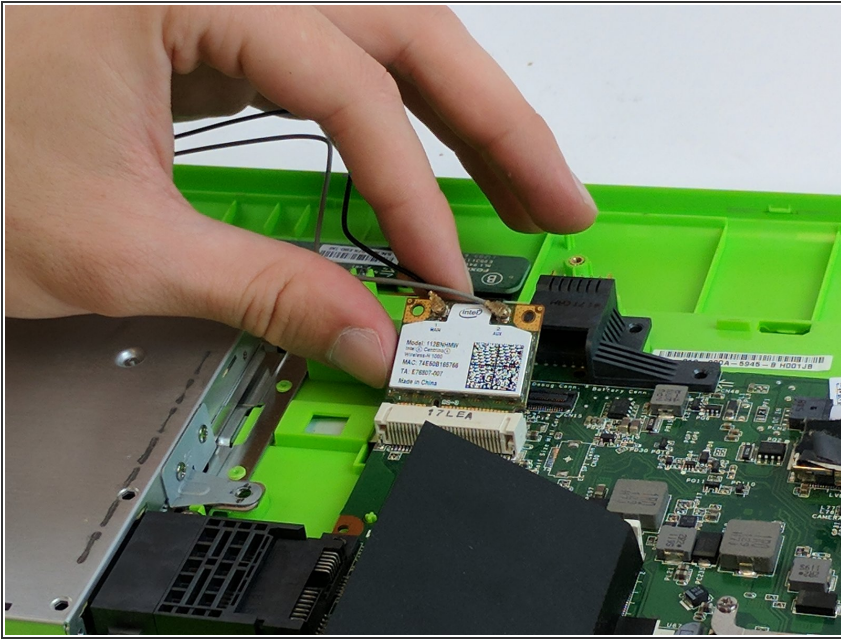
- Use a common or lat head screw driver to gently untangle the wires from their paths.

Step 8



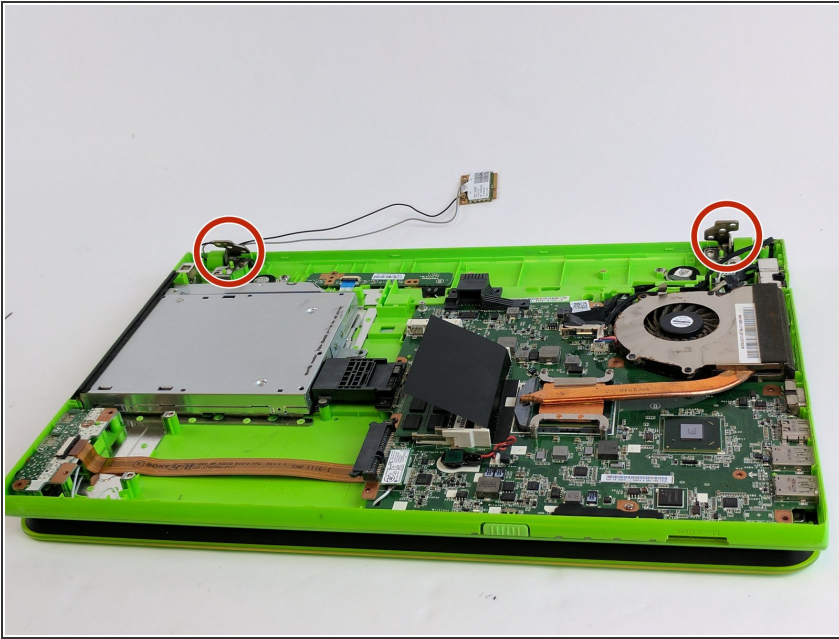
- You will need to unscrew this small circuit board and fold it up to get the wires out from under it.

Step 9



- Disconnect the screen from the motherboard.

Step 10



- They are two hinges that hold the screen on. Make sure to pay attention to where the screws come from in order to put them back and to make installation easier.

Step 11



- By folding up the hinges the screen will simply slide away from the body of the computer and you can then put the new screen into place.

To reassemble your device, follow these instructions in reverse order.