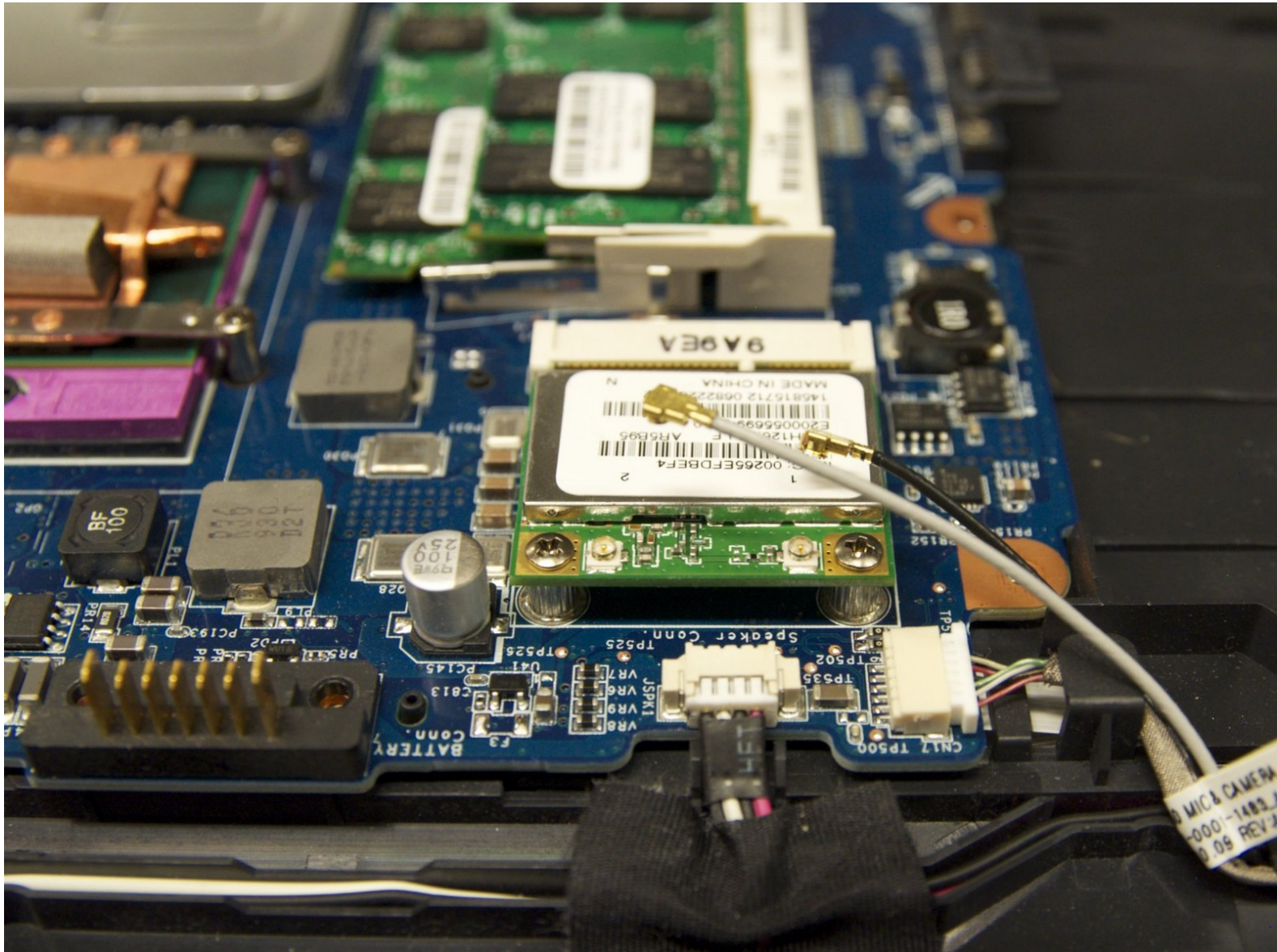




# Sony Vaio PCG-7184L (VGN-NW240F) Network Card Replacement

This guide will show you how to replace the network card of the Sony Vaio PCG-7184L

Written By: Sid



---

## INTRODUCTION

The network card is what allows a laptop to connect to the internet. Replacing a faulty network card can solve connectivity issues. Please review the Troubleshooting Guide before replacing the [Network Drive](#)

---

### TOOLS:

- [Phillips #1 Screwdriver](#) (1)
-

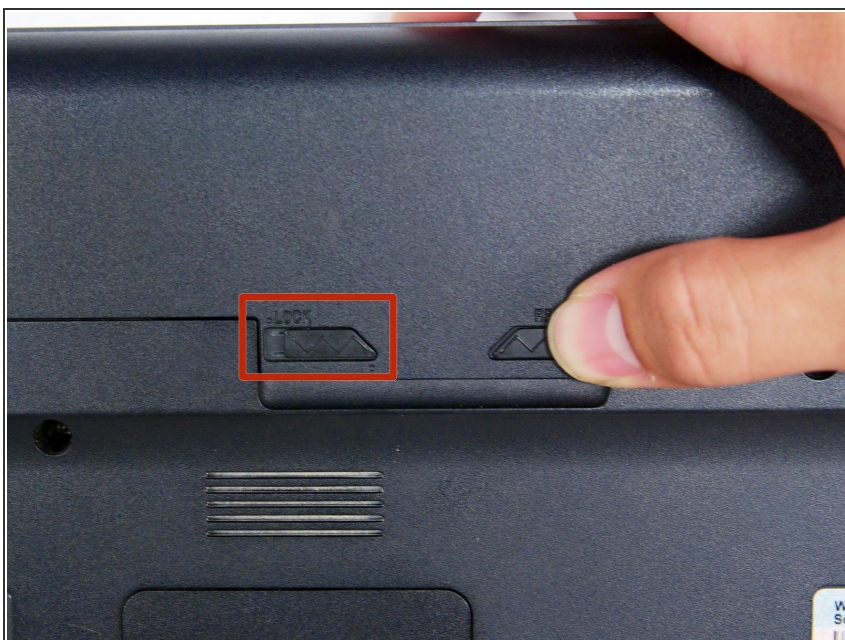


## Step 1 — Battery



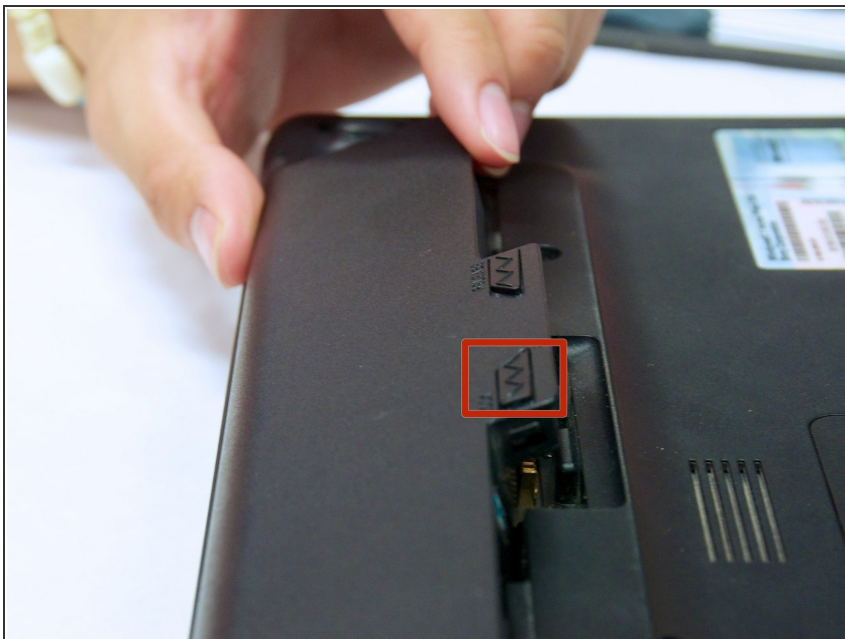
- Power off the laptop.
- Unplug the charging cable and any other cables plugged into the laptop.
- ⚠ Failure to remove or unplug any cables could result in electric shock.
- Turn the laptop over so that the back panel is facing upwards.

## Step 2



- Locate two switches above the battery that lock it into place.
- Push the left-hand switch, that says "lock" above it, so that it is unlocked.

### Step 3



- Push and hold the right-hand switch, which says "release" above it, and lift the battery up out of its place.

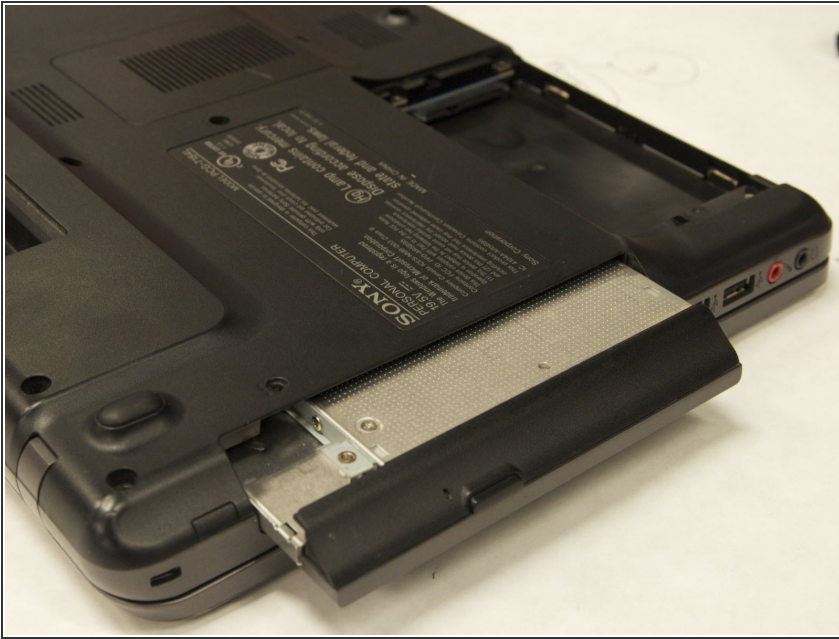
### Step 4 — Optical Drive



- Locate and unscrew the two highlighted 8 mm Phillips #1 screws.
- ⓘ There will be three dots next to the desired screws



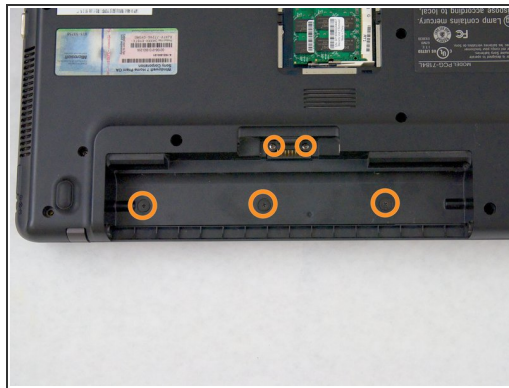
## Step 5



- Grip the cover of the optical drive and slide it out.

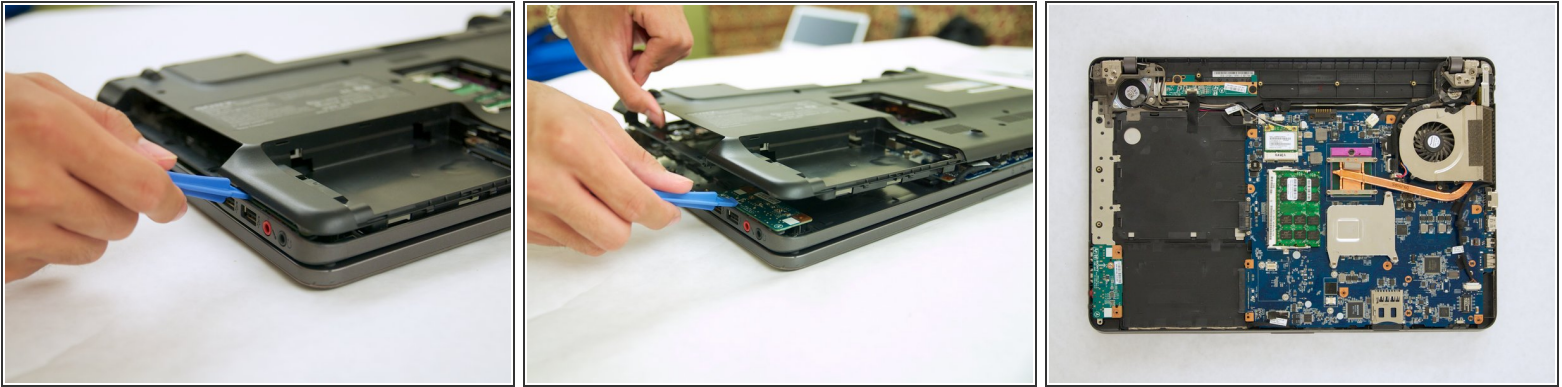
⚠ If it does not come out, do not force it. Double check to make sure the screws are entirely removed.

## Step 6 — Back Panel



- Remove all the 8mm Phillips #1 screws on the backside of the laptop.
- There are three 3mm and two 5.3mm screws under the battery that also need to be taken out.
- There are three 3mm screws under the optical drives that also need to be taken out.
- Remove the RAM panel in addition to the other screws. For further instructions, refer to the [RAM replacement guide](#).

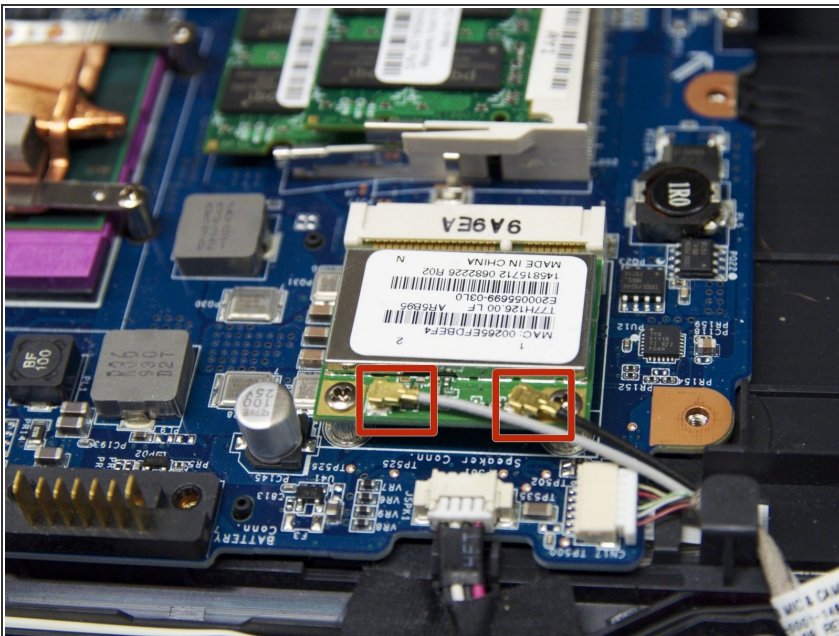
## Step 7



- Pry along the edges of the back panel using the spudger.

⚠ If you are struggling to remove the back panel with a moderate amount of force, do NOT apply any additional force, instead double check to make sure all the screws were removed before attempting again.

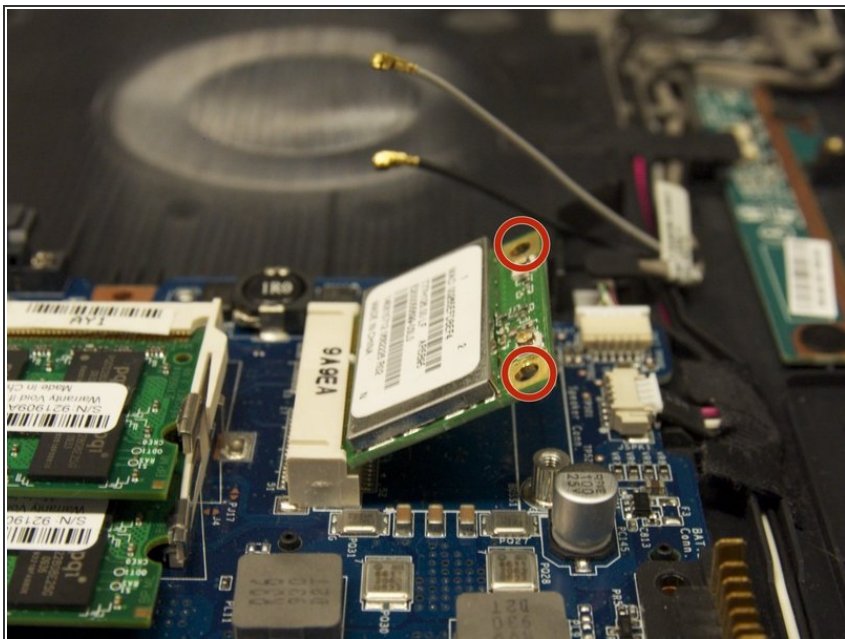
## Step 8 — Network Card



- Pull the two cables off of the network card.

⚠ Make sure to pull the cables straight up as the connectors are fragile.

## Step 9



- Remove the two Phillips 5.3mm screws from the network card.
- ⓘ After the screws are released, the network chip should lift up at an angle.
- Gently pull out the network card.

To reassemble your device, follow these instructions in reverse order.