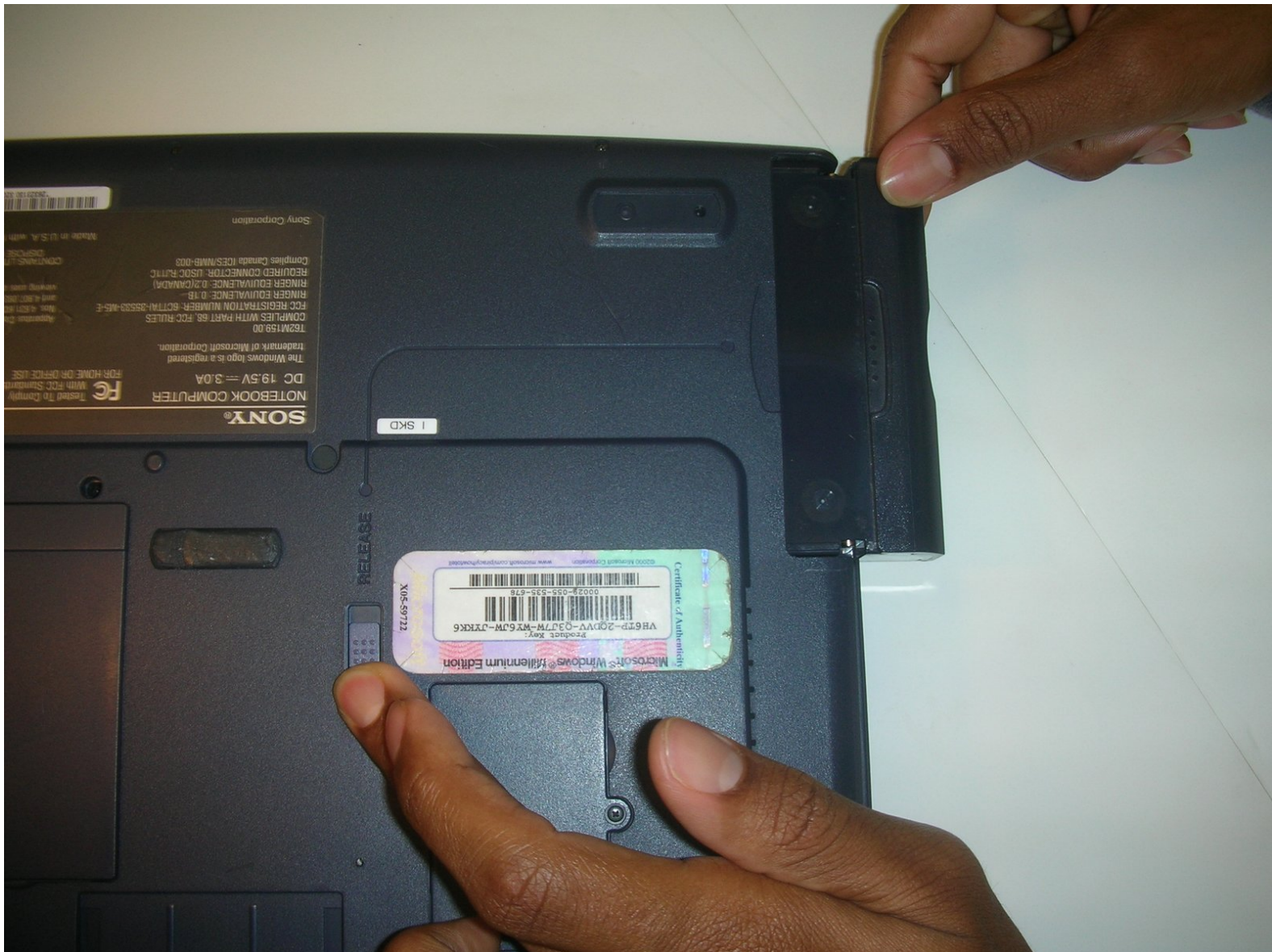




Sony Vaio PCG-981L Floppy Drive Replacement

The purpose is to open up the floppy drive so that you can check for any connection failures or damages.

Written By: Loratious



This document was generated on 2019-09-28 02:29:22 AM (MST).

INTRODUCTION

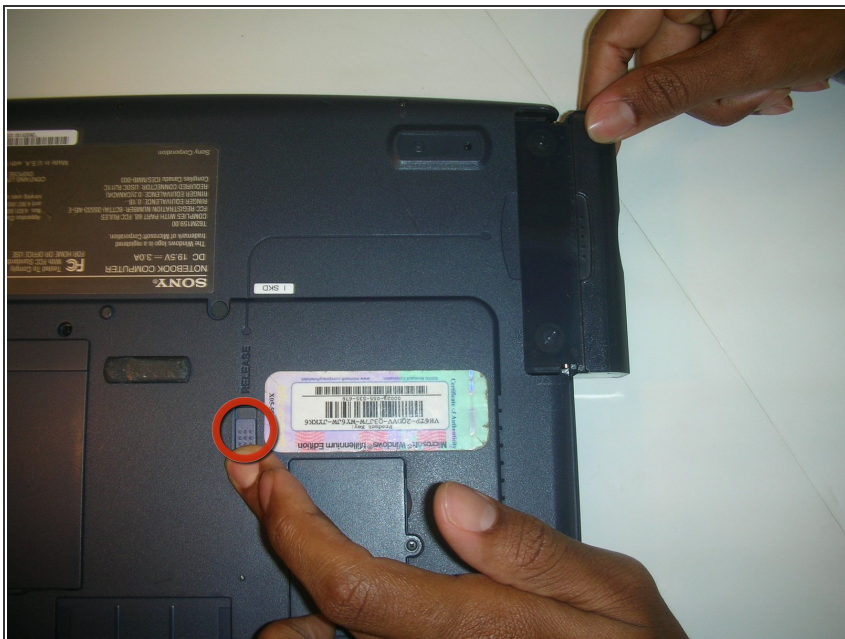
If for any reason the floppy drive isn't working, the simplest solution is to replace the entire drive. But, if you're not able to acquire a new drive you may be able at least find the source of the failure through disassembling the drive.



TOOLS:

- [Phillips #1 Screwdriver](#) (1)
-

Step 1 — Floppy Drive



- Turn the copmuter over so that its underside is facing up. Then slide the blue floppy drive release button down and pull the floppy drive out of the laptop.

Step 2



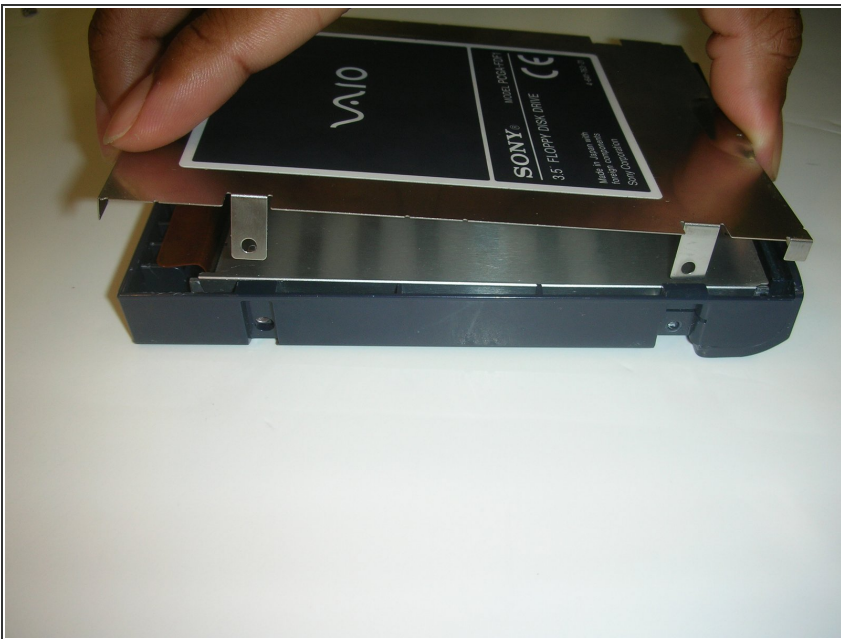
- Completely remove and isolate the floppy drive from the laptop.

Step 3



- There are two screws on each side (total of four screws) of the floppy drive. Remove these screws.

Step 4



- Once you have removed the screws, you can remove the floppy drive core from its casing as shown.

Step 5



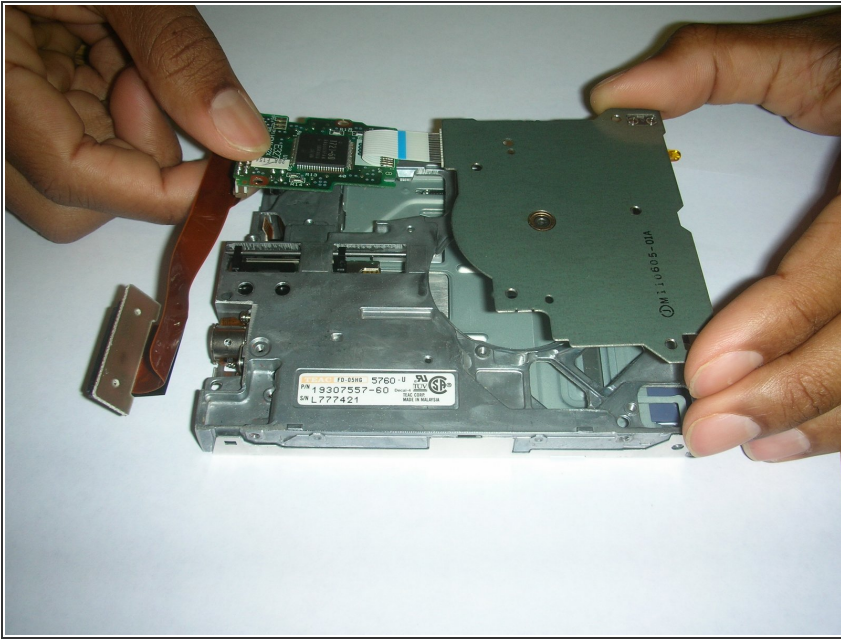
- After you have removed the floppy drive core from its casing, unscrew these five screws shown.

Step 6



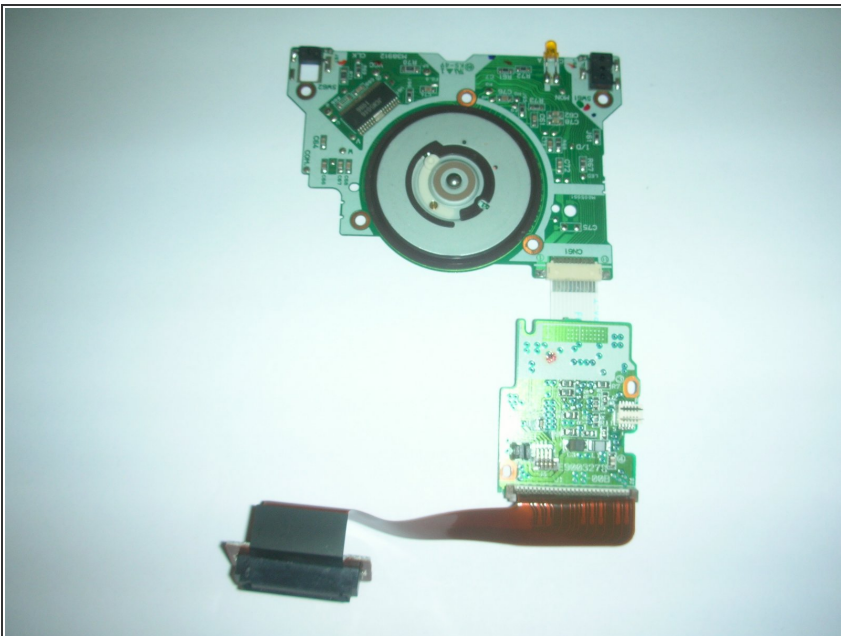
- Remove the two screws holding part of the floppy processing unit.

Step 7



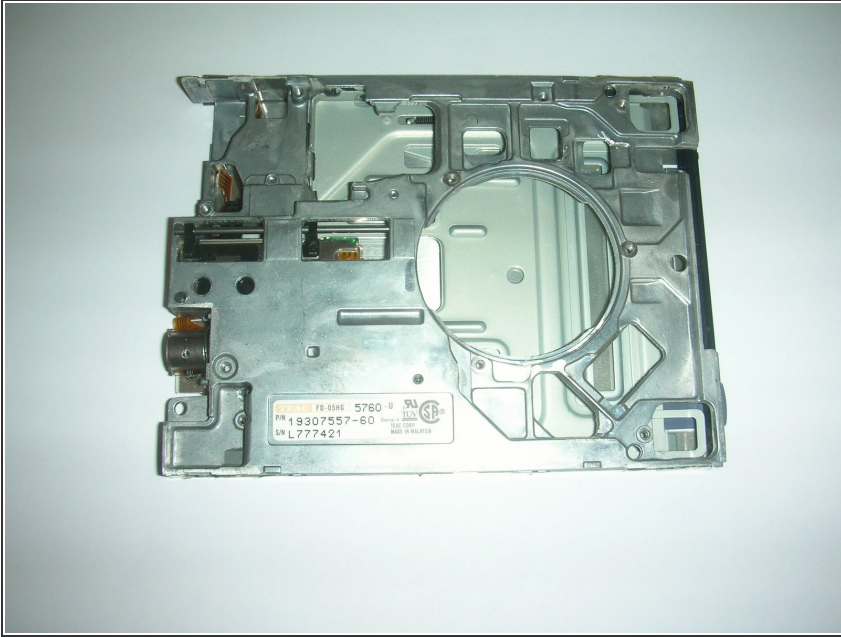
- Now that the screws are removed, you can remove the entire processing unit of the floppy drive.

Step 8



- Here is an isolated image of the core hardware of the floppy drive. Here is where the floppy "magic" happens. Check for any connection failures or shortages. You may need to re solder some of the connections.

Step 9



- Here is an isolated image of the floppy drive casing unit.

To reassemble your device, follow these instructions in reverse order.