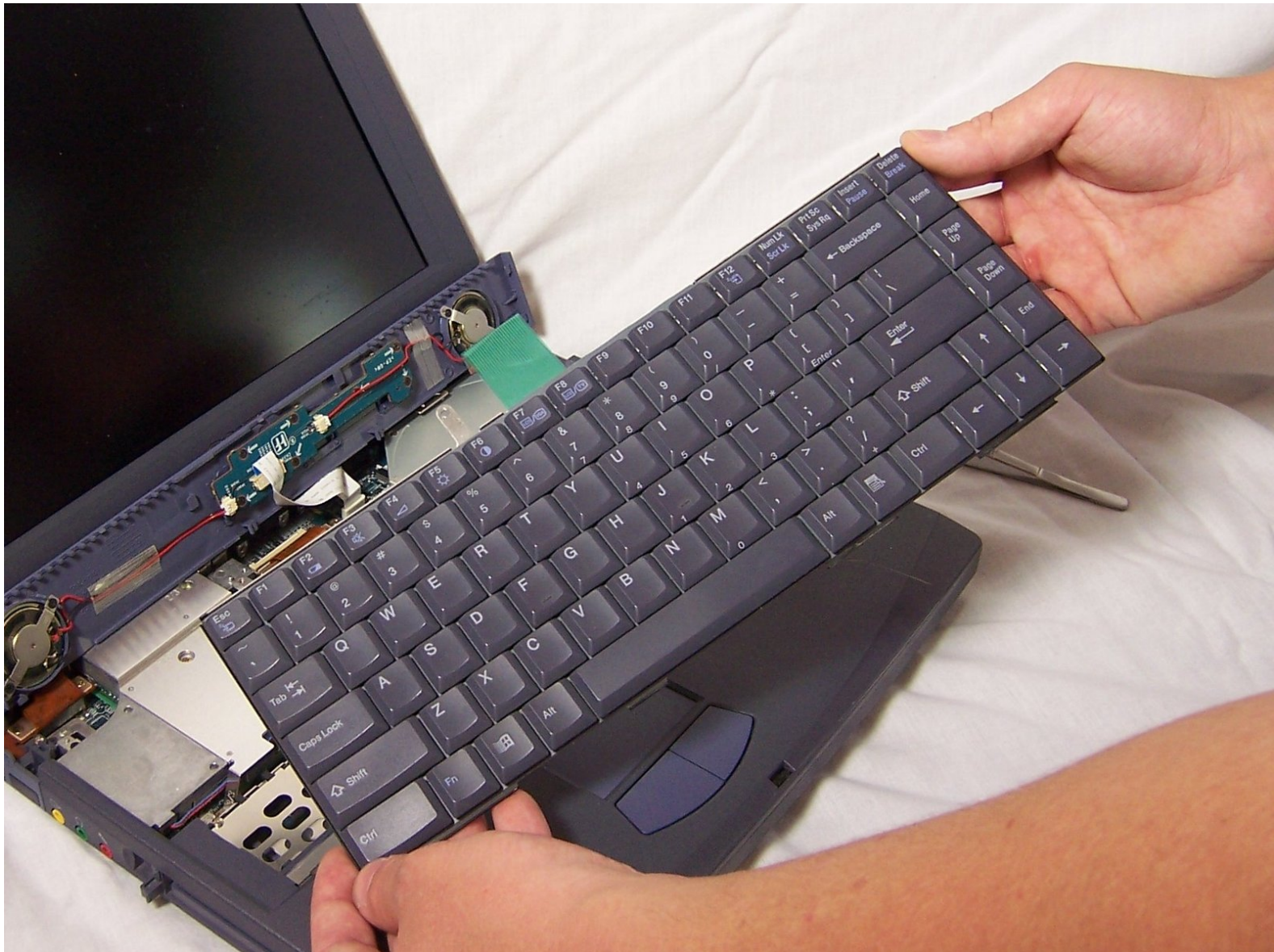




# Sony Vaio PCG-F420 Keyboard Replacement

Written By: Andrew Quayle



## INTRODUCTION

If your keys appear to be broken, replacing the keyboard may be necessary.

To make sure the problem is with the keyboard, follow the trouble shooting guide.

When buying a new keyboard make sure it is compatible with PCG-F420.

**CAUTION: Static electricity in your body can ruin your computer. Use an anti-static wristband.**



### TOOLS:

- [Phillips #00 Screwdriver](#) (1)
  - [Tweezers](#) (1)
  - [Anti-Static Wrist Strap](#) (1)
-

## Step 1 — Battery



- The battery is located on the left side of the laptop as shown by the red circle.

## Step 2



- Pull the plastic cover down (indicated by the arrow on the cover) and then swing it upwards to reveal the battery compartment.
- The battery can now be removed by pulling it.



## Step 3 — Keyboard



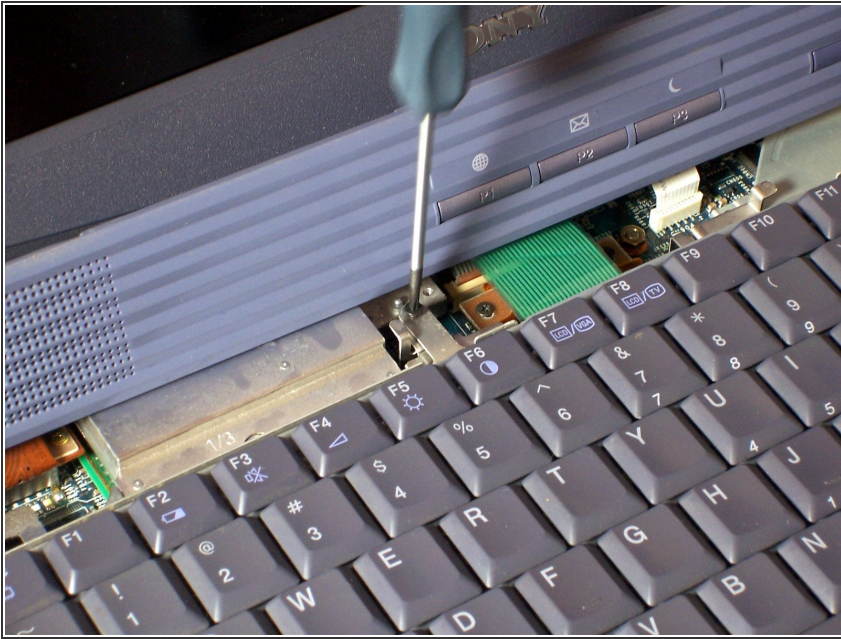
- Use your Philips #00 screwdriver to unscrew the small screw counterclockwise. This screw is for the audio/visual jacks on the left side of the laptop.

## Step 4



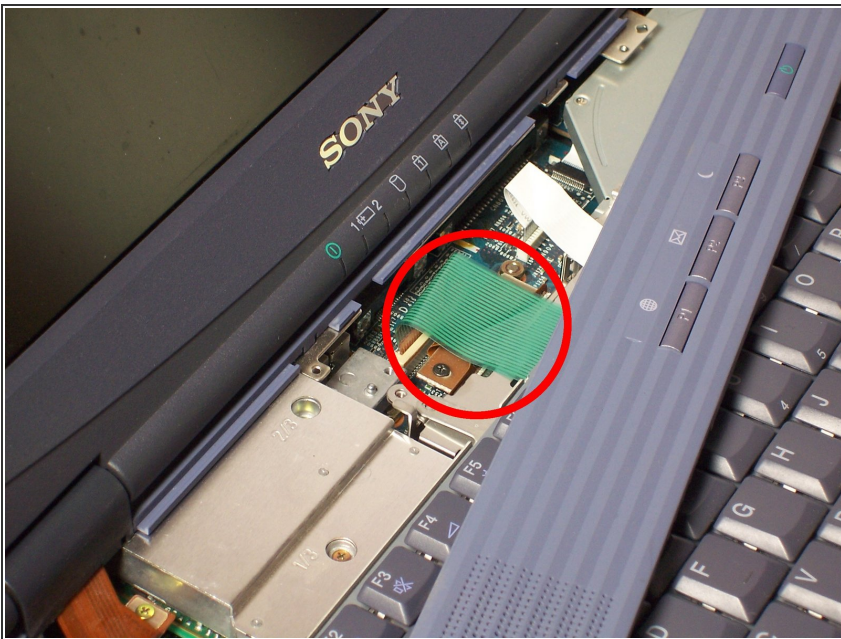
- This will unlock the cover between the keyboard and screen. Gently slide it to the right and lift up. Be sure not to pull the keyboard hard as there are still wires attached. These wires will be dealt with in the next step.

## Step 5



- Lift up the cover and lean it against the display so it is out of the way for the rest of the process.
- Remove the small screw above the F6 key on the keyboard. Place screw in container to ensure it won't be lost.

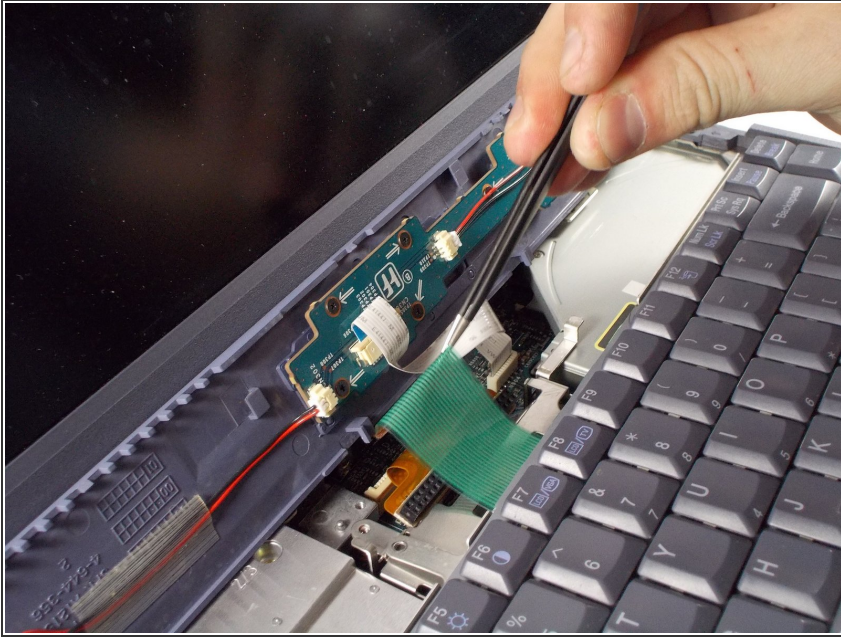
## Step 6



- Find the green ribbon as indicated in the picture by the red circle. This is what connects the keyboard to the motherboard.



## Step 7



- To unplug the ribbon cable, use a pair of tweezers to lift up the white bar near the connection to the motherboard. Only lift up the ribbon lightly to release ribbon from the motherboard.

## Step 8



- Now, you can pull on the ribbon cable and it will detach from the motherboard.

## Step 9



- Your keyboard is now safely detached. Necessary repairs or replacements can be made from [here](#).

To reassemble your device, follow these instructions in reverse order.